



RADIATED EMISSION

Model Name : CBS1002403

Model No. :

Serial No. :

Points : 3

Detector : PEAK/QP

Polarization : Hori. & Vert.

Limit: [EN 55022] Class B<3m>

Tested by : T.Oiwake

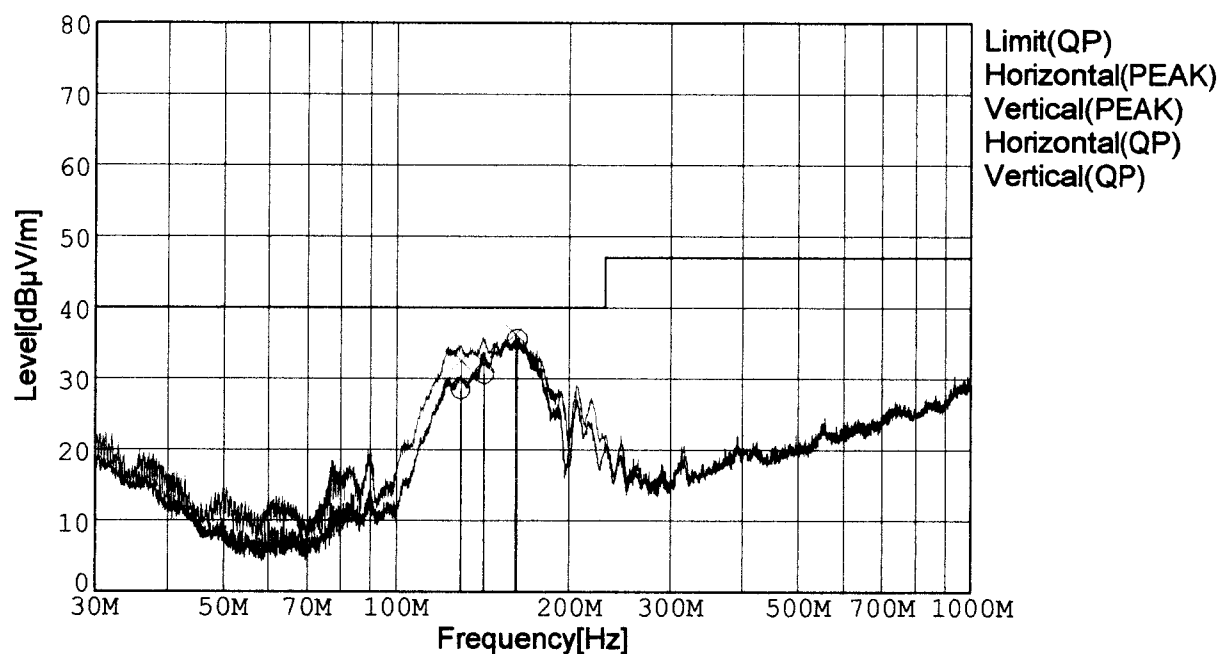
Temp. : 25degC

Humi. : 40%

Date : 2002/7/18 14:11

Test Equip. : R3132,ESPC

Comment : DC 24V, Io=23.4A



Frequency [MHz]	Meter Reading (QP) [dBμV]	Ant. Type	Antenna Factor [dB/m]	Cable & Preamp [dB]	Level (QP) [dBμV/m]	Angle[°]	Height [cm]	Polar.	Limit [dBμV/m]	Margin [dB]
129.153	48.8	BL	11.2	-31.5	28.5	334	160	Hori.	40.0	11.5
142.220	51.2	BL	10.8	-31.4	30.6	117	160	Hori.	40.0	9.4
162.077	57.1	BL	9.7	-31.3	35.5	103	154	Hori.	40.0	4.5
129.362	52.7	BL	11.2	-31.4	32.5	0	144	Vert.	40.0	7.5
142.020	52.7	BL	10.8	-31.4	32.1	3	114	Vert.	40.0	7.9
160.910	57.8	BL	9.8	-31.3	36.3	1	145	Vert.	40.0	3.7

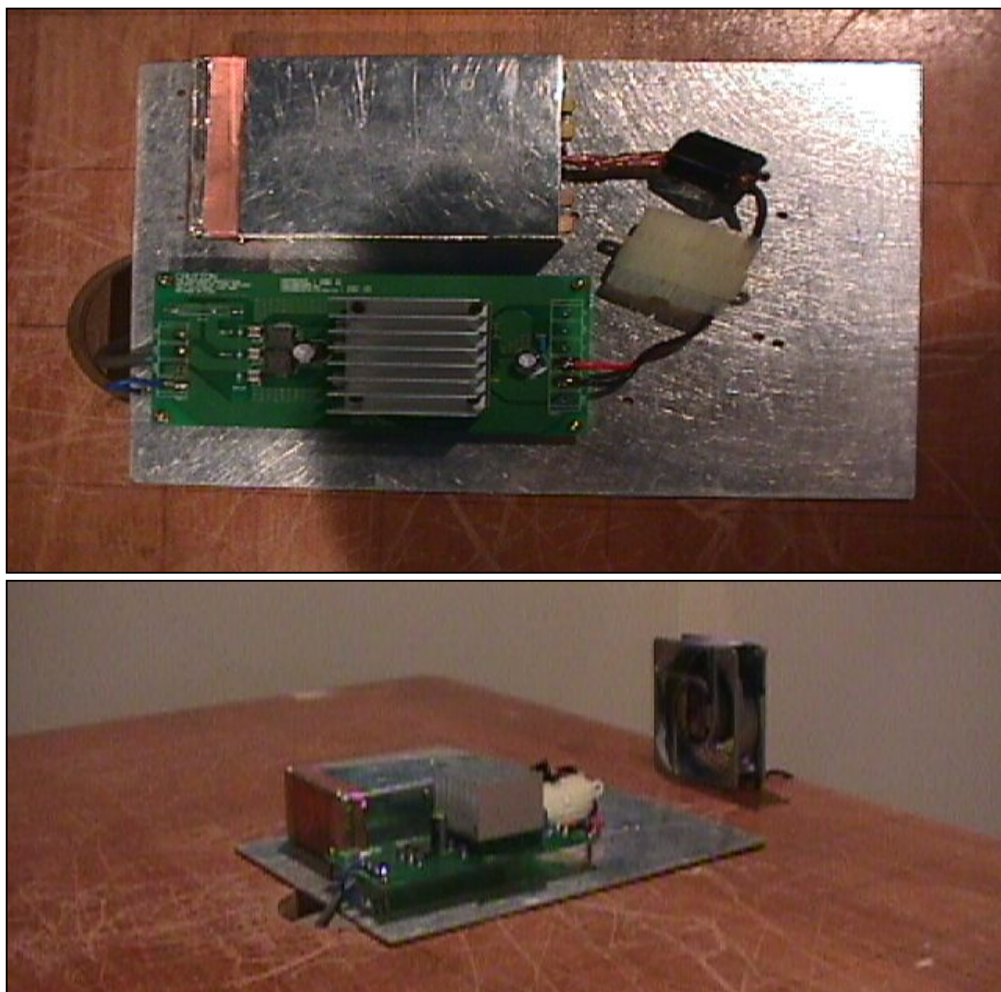
BL: Biconi-Log

Conditions

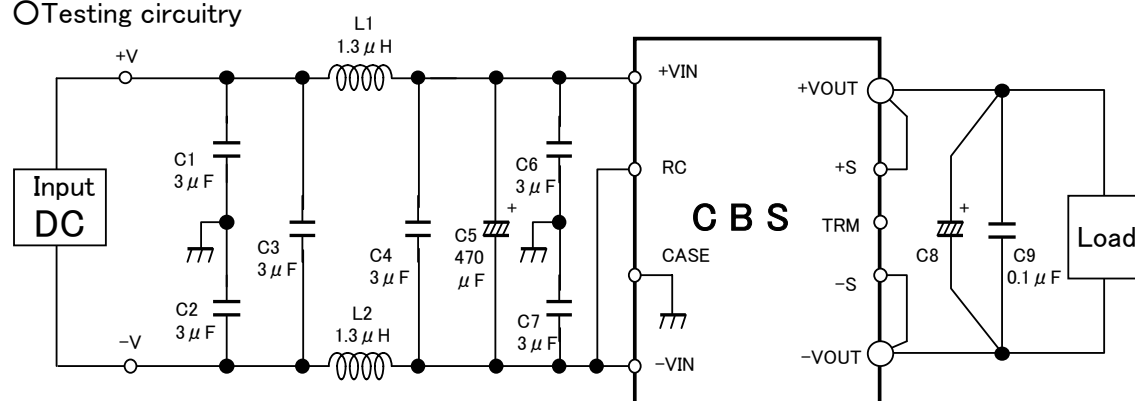
Date 2002/7/19

Test : RADIATED EMISSION
 Model Name : CBS1002403/15/24

○Photographs of Test Set-Up



○Testing circuitry



L1, L2 : ETQP6F1R3LFA (MATSUSHITA)

C1, C2, C3,

C4, C6, C7 : CY55Y5P2A305M (TOKIN)

C5 : 50V 470 μ F PMseries (nichicon)

C8 : CBS1002403 10V 2200 μ F LXZseries (NIPPON CHEMI-CON)

CBS1002415 25V 470 μ F LXZseries (NIPPON CHEMI-CON)

CBS1002424 35V 220 μ F LXZseries (NIPPON CHEMI-CON)

C9 : MDD21H104M (Nitsuko)

Fig. Testing circuitry



LINE CONDUCTION

Model Name : CBS1002403

Model No. :

Serial No. :

Points : 3

Detector : PEAK/QP/Ave.

Line Mode : VA/VB

Limit1: [EN 55022] Class B(QP)

Limit2: [EN 55022] Class B(Ave.)

Twsted by : T.Oiwake

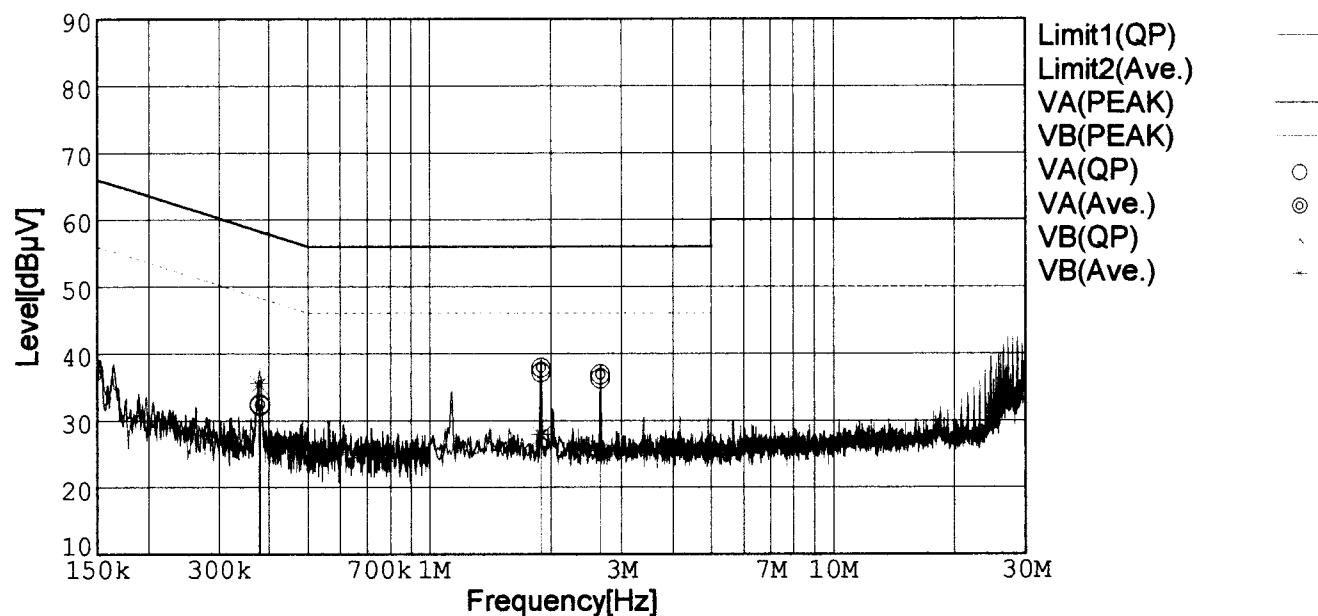
Temp. : 25degC

Humi. : 40%

Date : 2002/7/16 11:29

Test Equip. : R3132,ESPC

Comment : DC 24V, Io=11.7A



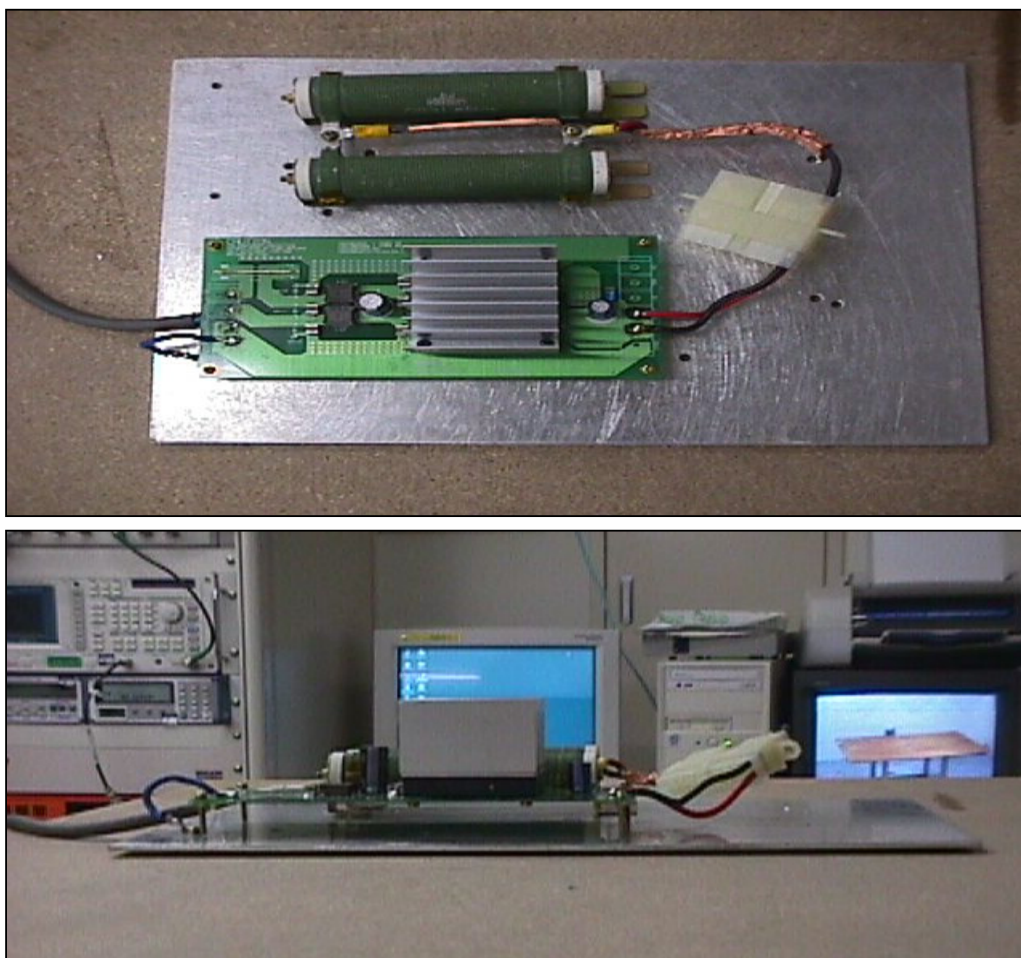
Frequency [MHz]	Meter Reading (QP) [dBμV]	Meter Reading (Ave.) [dBμV]	Factor [dB]	Level (QP) [dBμV]	Level (Ave.) [dBμV]	Line	Limit (QP) [dBμV]	Limit (Ave.) [dBμV]	Margin (QP)[dB]	Margin (Ave.) [dB]
0.3802	22.5	22.6	9.8	32.3	32.4	VA	58.3	48.3	26.0	15.9
1.8897	27.3	27.9	9.9	37.2	37.8	VA	56.0	46.0	18.8	8.2
2.6436	26.3	27.0	9.9	36.2	36.9	VA	56.0	46.0	19.8	9.1
0.3779	25.5	25.8	9.8	35.3	35.6	VB	58.3	48.3	23.0	12.7
1.8888	17.8	18.0	9.9	27.7	27.9	VB	56.0	46.0	28.3	18.1
2.6423	15.5	15.5	9.9	25.4	25.4	VB	56.0	46.0	30.6	20.6

Conditions

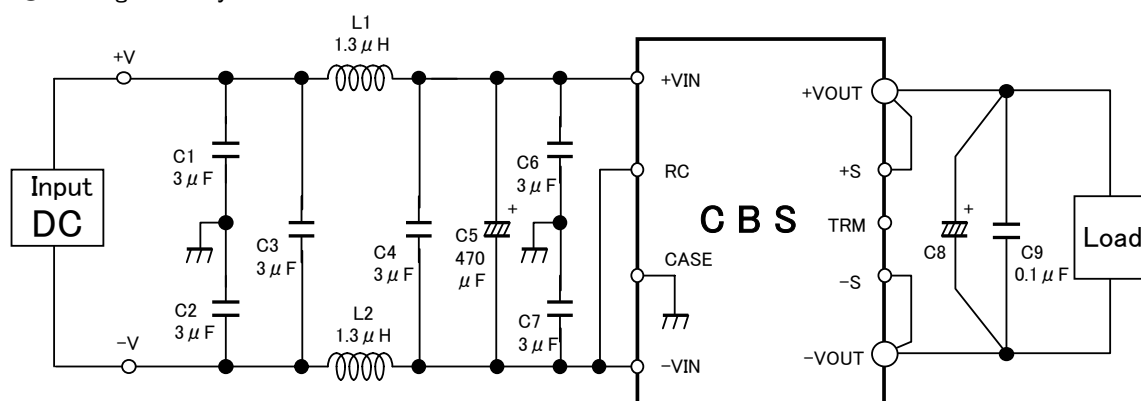
Date 2002/7/19

Test : LINE CONDUCTION
Model Name : CBS1002403/15/24

○Photographs of Test Set-Up



○Testing circuitry



- L1, L2 : ETQP6F1R3LFA (MATSUSHITA)
- C1, C2, C3, C4, C6, C7 : CY55Y5P2A305M (TOKIN)
- C5 : 50V 470 μ F PMseries (nichicon)
- C8 : CBS1002403 10V 2200 μ F LXZseries (NIPPON CHEMI-CON)
CBS1002415 25V 470 μ F LXZseries (NIPPON CHEMI-CON)
CBS1002424 35V 220 μ F LXZseries (NIPPON CHEMI-CON)
- C9 : MDD21H104M (Nitsuko)

Fig. Testing circuitry