



# RADIATED EMISSION

Model Name : CBS1002415

Model No. :

Serial No. :

Points : 3

Detector : PEAK/QP

Polarization : Hori. & Vert.

Tested by : T.Oiwake

Temp. : 25degC

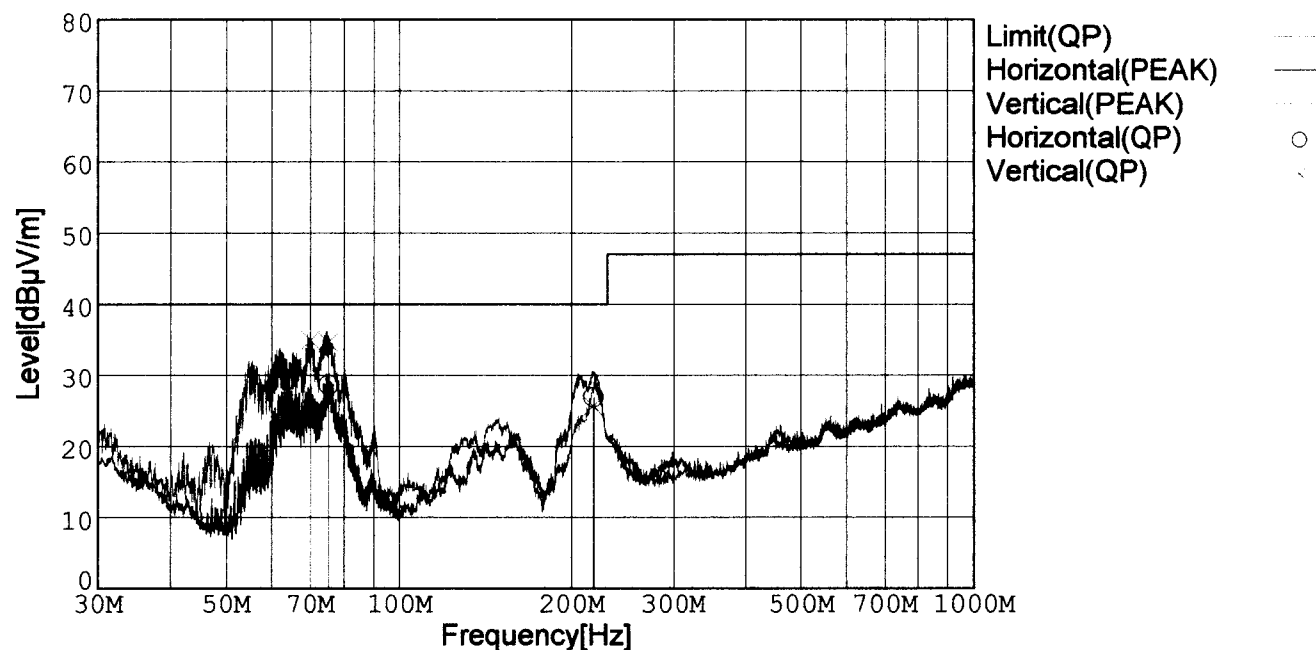
Humi. : 40%

Date : 2002/7/18 22:16

Test Equip. : R3132,ESPC

Comment : DC 24V, 6.7A

Limit: [EN 55022] Class B<3m>



Frequency [MHz]	Meter Reading (QP) [dBμV]	Ant. Type	Antenna Factor [dB/m]	Cable & Preamp [dB]	Level (QP) [dBμV/m]	Angle[°]	Height [cm]	Polar.	Limit [dBμV/m]	Margin [dB]
70.105	51.1	BL	5.4	-31.8	24.7	350	126	Hori.	40.0	15.3
75.390	53.9	BL	6.4	-31.7	28.6	19	156	Hori.	40.0	11.4
218.199	49.1	BL	8.9	-31.1	26.9	278	155	Hori.	40.0	13.1
69.997	61.3	BL	5.4	-31.8	34.9	75	103	Vert.	40.0	5.1
75.320	59.9	BL	6.4	-31.7	34.6	102	112	Vert.	40.0	5.4
217.525	47.9	BL	8.9	-31.1	25.7	221	136	Vert.	40.0	14.3

BL: Biconi-Log

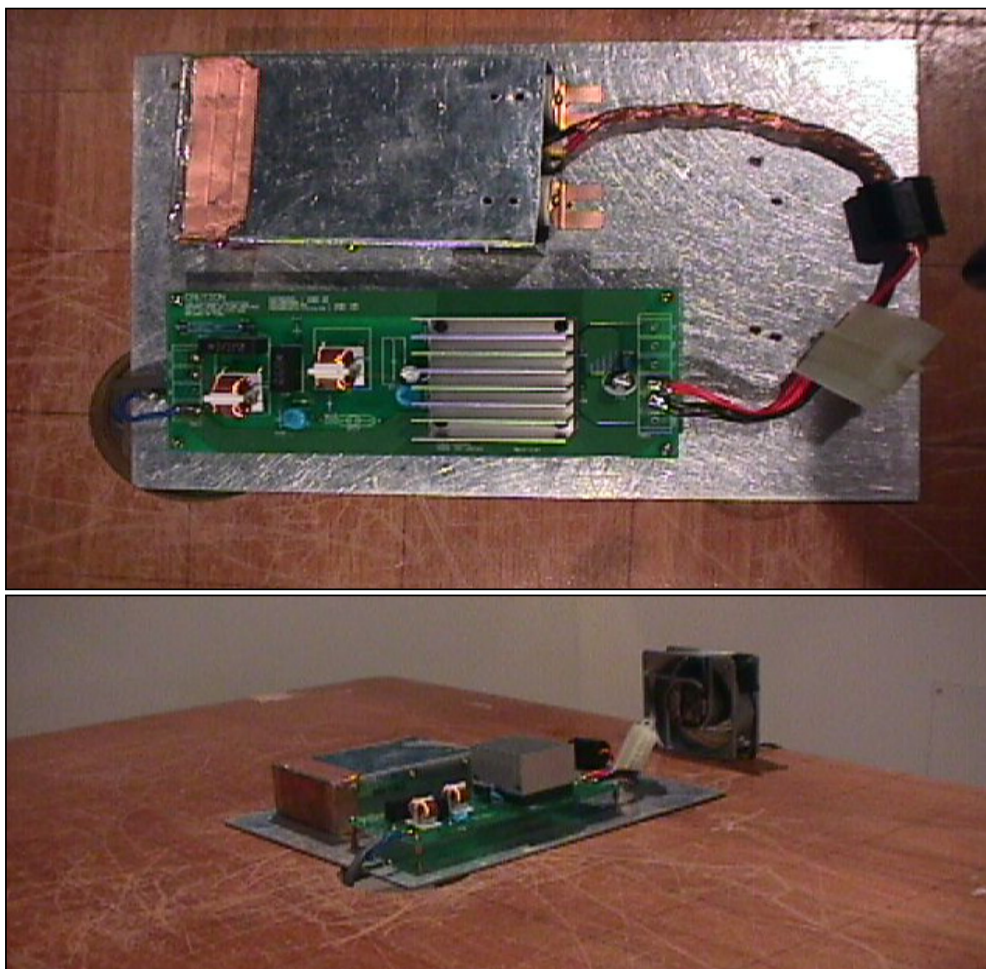
# Conditions

Date 2002/7/19

Test : RADIATED EMISSION

Model Name : CBS1002403/15/24

○Photographs of Test Set-Up



○Testing circuitry

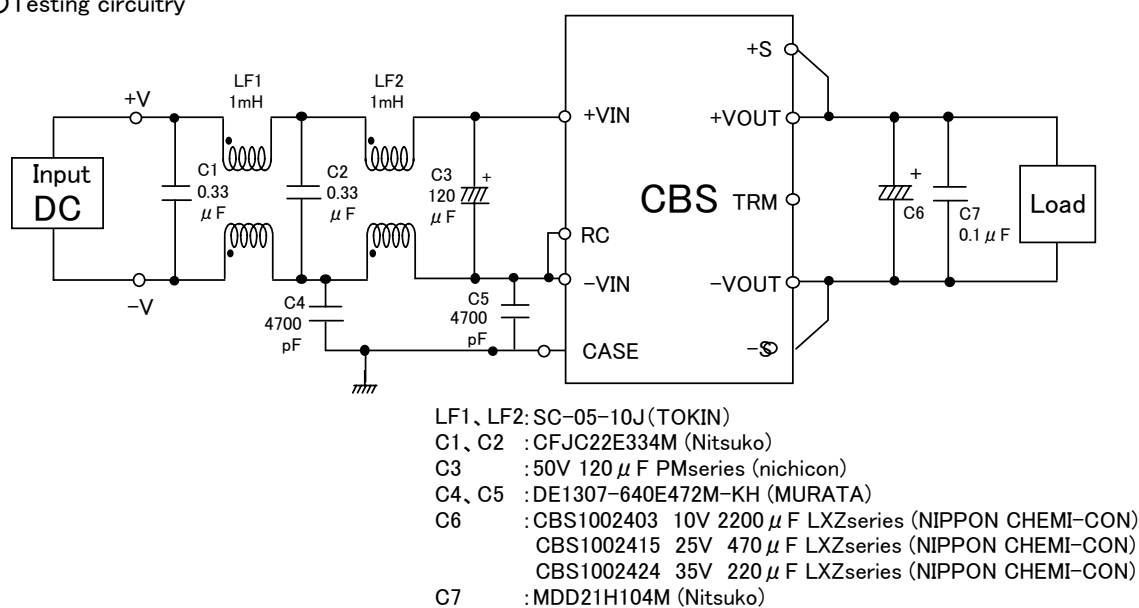


Fig. Testing circuitry



## LINE CONDUCTION

Model Name : CBS1002415

Model No. :

Serial No. :

Points : 3

Detector : PEAK/QP/Ave.

Line Mode : VA/VB

Limit1: [EN 55022] Class B(QP)

Limit2: [EN 55022] Class B(Ave.)

Tested by : T.Oiwake

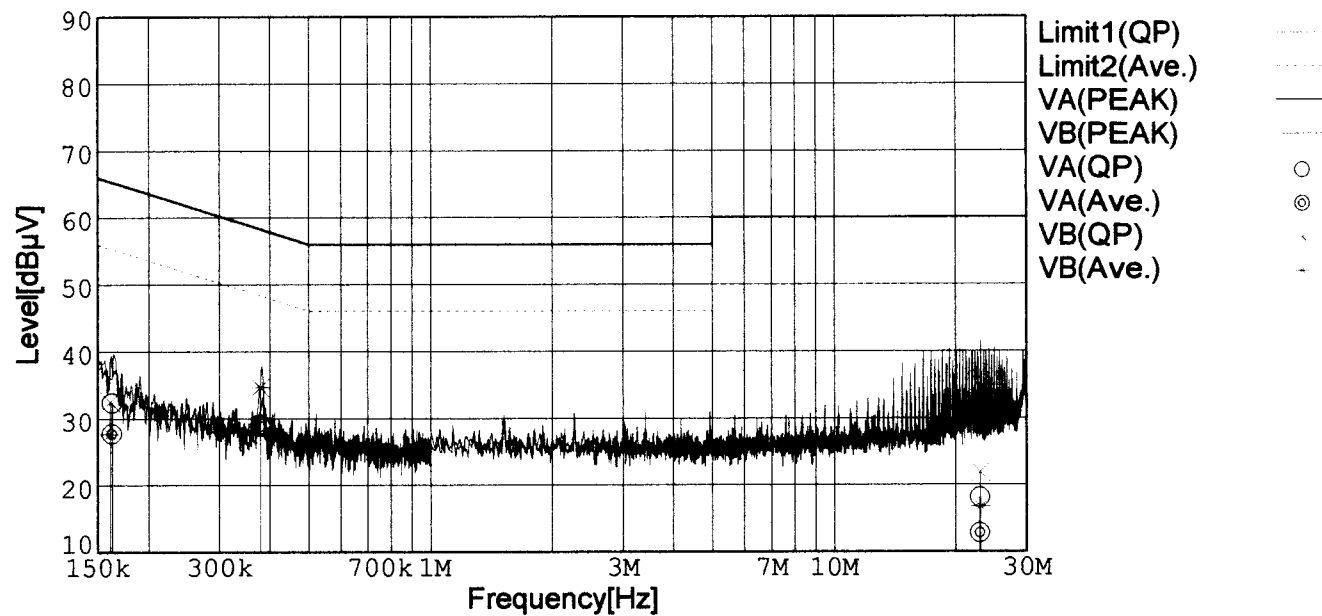
Temp. : 25degC

Humi. : 40%

Date : 2002/7/11 15:44

Test Equip. : R3132,ESPC

Comment : DC 24V, Io=6.7A



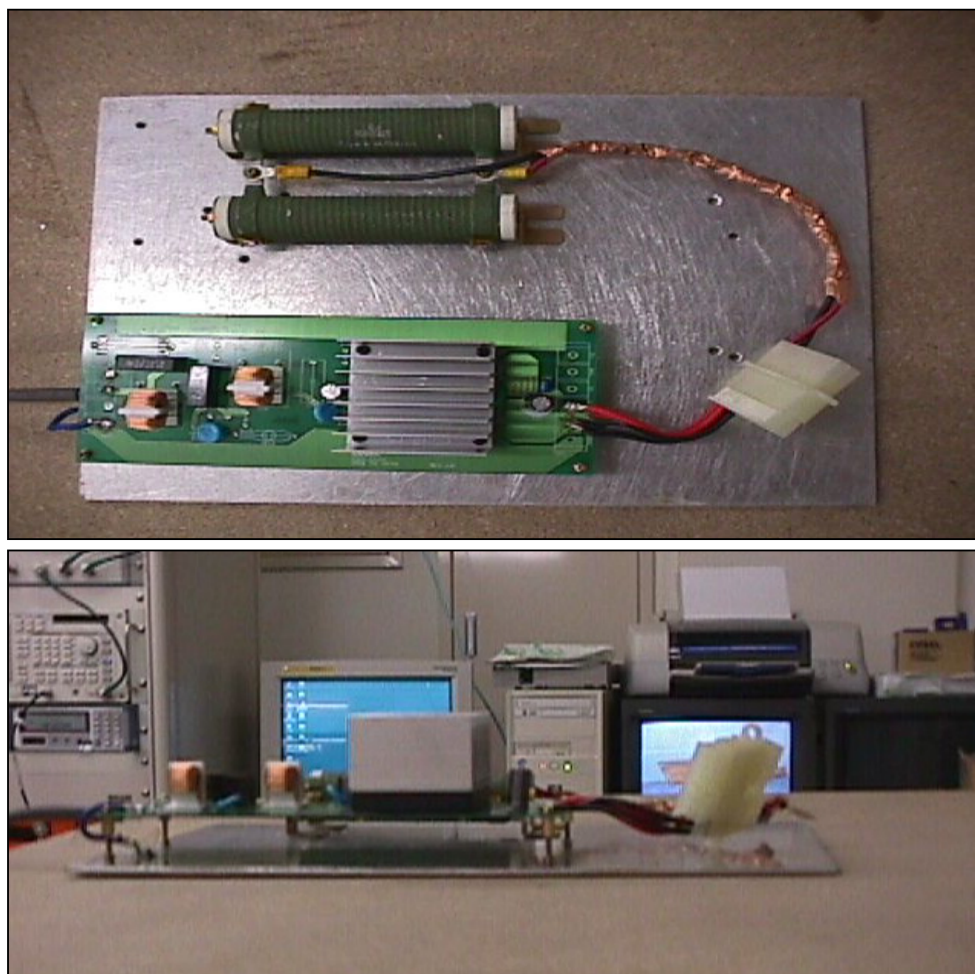
Frequency [MHz]	Meter Reading (QP) [dBμV]	Meter Reading (Ave.) [dBμV]	Factor [dB]	Level (QP) [dBμV]	Level (Ave.) [dBμV]	Line	Limit (QP) [dBμV]	Limit (Ave.) [dBμV]	Margin (QP)[dB]	Margin (Ave.) [dB]
0.1627	22.5	17.9	9.8	32.3	27.7	VA	65.3	55.3	33.0	27.6
0.3783	19.3	19.0	9.8	29.1	28.8	VA	58.3	48.3	29.2	19.5
22.9875	7.8	2.5	10.3	18.1	12.8	VA	60.0	50.0	41.9	37.2
0.1611	22.7	17.9	9.8	32.5	27.7	VB	65.4	55.4	32.9	27.7
0.3780	24.8	24.8	9.8	34.6	34.6	VB	58.3	48.3	23.7	13.7
23.0643	11.5	6.4	10.3	21.8	16.7	VB	60.0	50.0	38.2	33.3

# Conditions

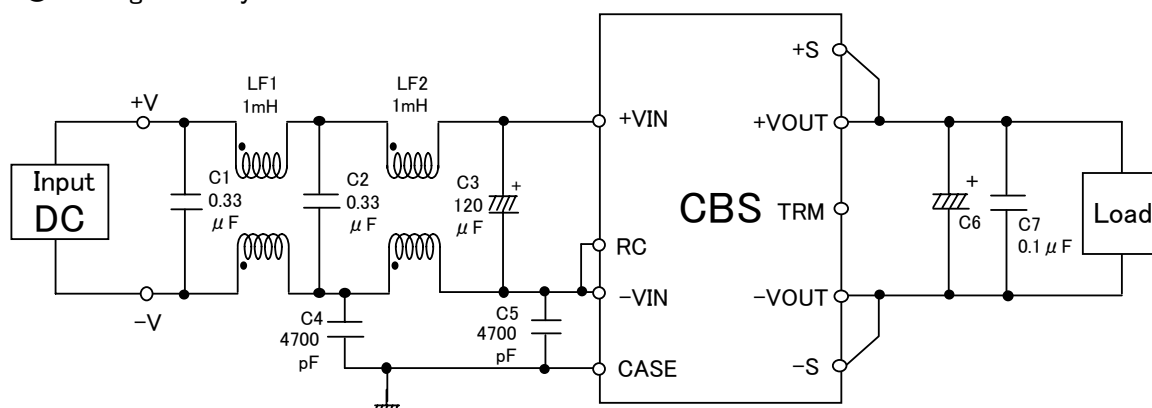
Date 2002/7/19

Test : LINE CONDUCTION  
Model Name : CBS1002403/15/24

## ○Photographs of Test Set-Up



## ○Testing circuitry



LF1、LF2 : SC-05-10J (TOKIN)

C1、C2 : CFJC22E334M (Nitsuko)

C3 : 50V 120  $\mu$  F PMseries (nichicon)

C4、C5 : DE1307-640E472M-KH (MURATA)

C6 : CBS1002403 10V 2200  $\mu$  F LXZseries (NIPPON CHEMI-CON)

CBS1002415 25V 470  $\mu$  F LXZseries (NIPPON CHEMI-CON)

CBS1002424 35V 220  $\mu$  F LXZseries (NIPPON CHEMI-CON)

C7 : MDD21H104M (Nitsuko)

Fig. Testing circuitry