



RADIATED EMISSION

Model Name : CBS1002424

Model No. :

Serial No. :

Points : 2

Detector : PEAK/QP

Polarization : Hori. & Vert.

Limit: [EN 55022] Class B<3m>

Tested by : T.Oiwake

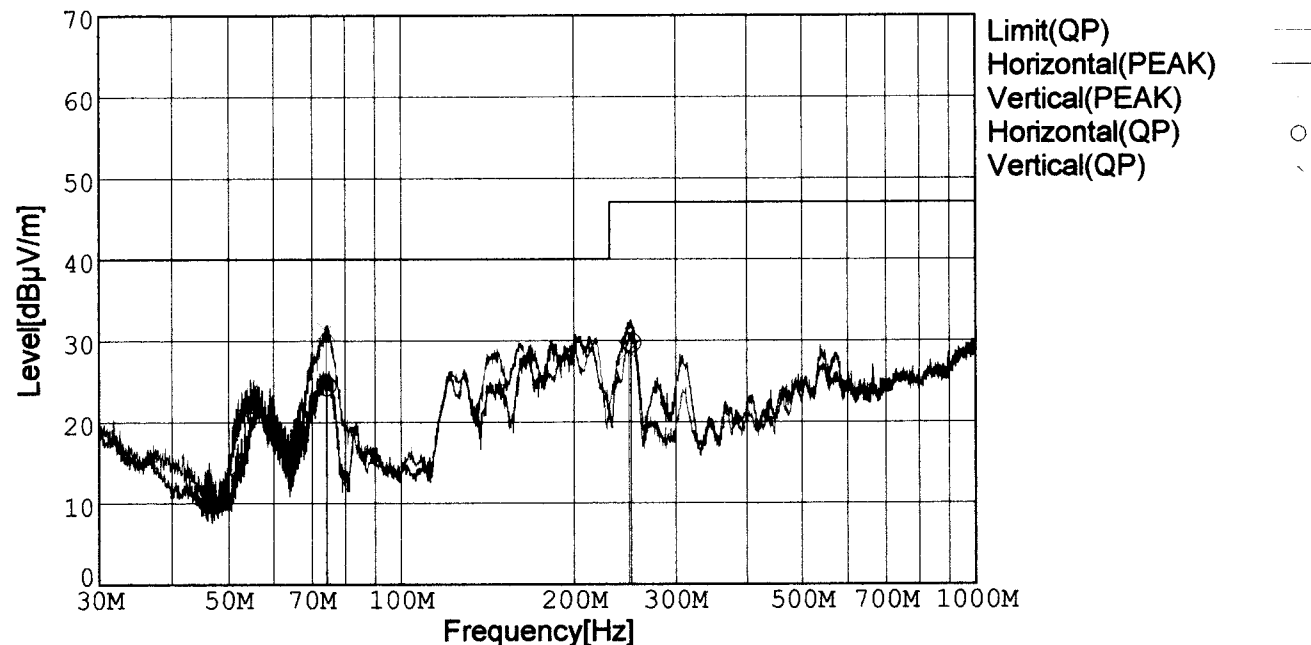
Temp. : 25degC

Humi. : 40%

Date : 2002/7/12 14:43

Test Equip. : R3132,ESPC

Comment : DC 24V, 4.2A



Frequency [MHz]	Meter Reading (QP) [dBμV]	Ant. Type	Antenna Factor [dB/m]	Cable & Preamp [dB]	Level (QP) [dBμV/m]	Angle[°]	Height [cm]	Polar.	Limit [dBμV/m]	Margin [dB]
74.324	49.9	BL	6.3	-31.7	24.5	257	154	Hori.	40.0	15.5
251.410	48.1	BL	12.6	-31.0	29.7	286	122	Hori.	47.0	17.3
74.204	56.7	BL	6.2	-31.7	31.2	0	108	Vert.	40.0	8.8
249.034	47.4	BL	12.3	-31.0	28.7	271	122	Vert.	47.0	18.3

BL: Biconi-Log

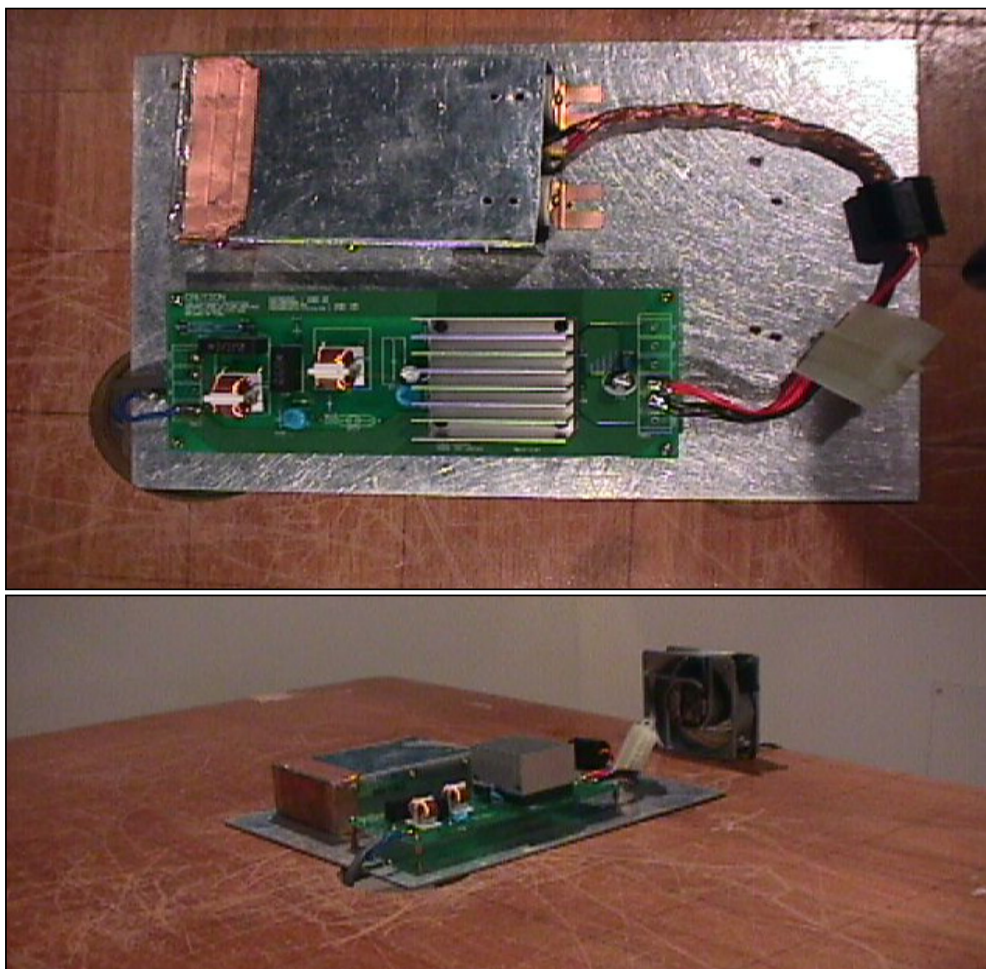
Conditions

Date 2002/7/19

Test : RADIATED EMISSION

Model Name : CBS1002403/15/24

○Photographs of Test Set-Up



○Testing circuitry

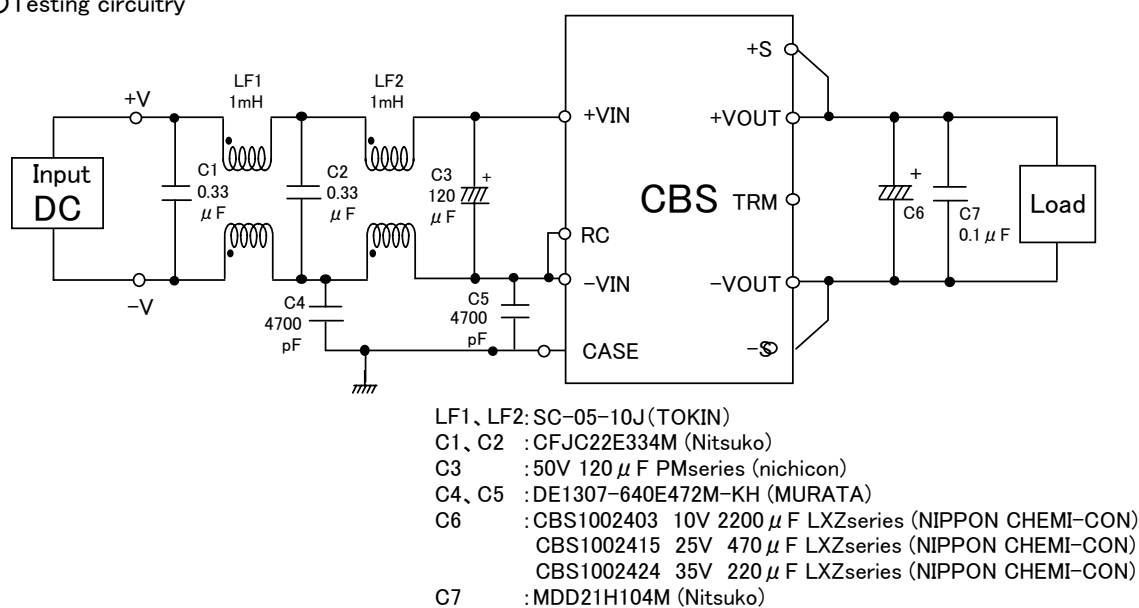


Fig. Testing circuitry



LINE CONDUCTION

Model Name : CBS1002424

Model No. :

Serial No. :

Points : 2

Detector : PEAK/QP/Ave.

Line Mode : VA/VB

Limit1: [EN 55022] Class B(QP)

Limit2: [EN 55022] Class B(Ave.)

Tested by : T.Oiwake

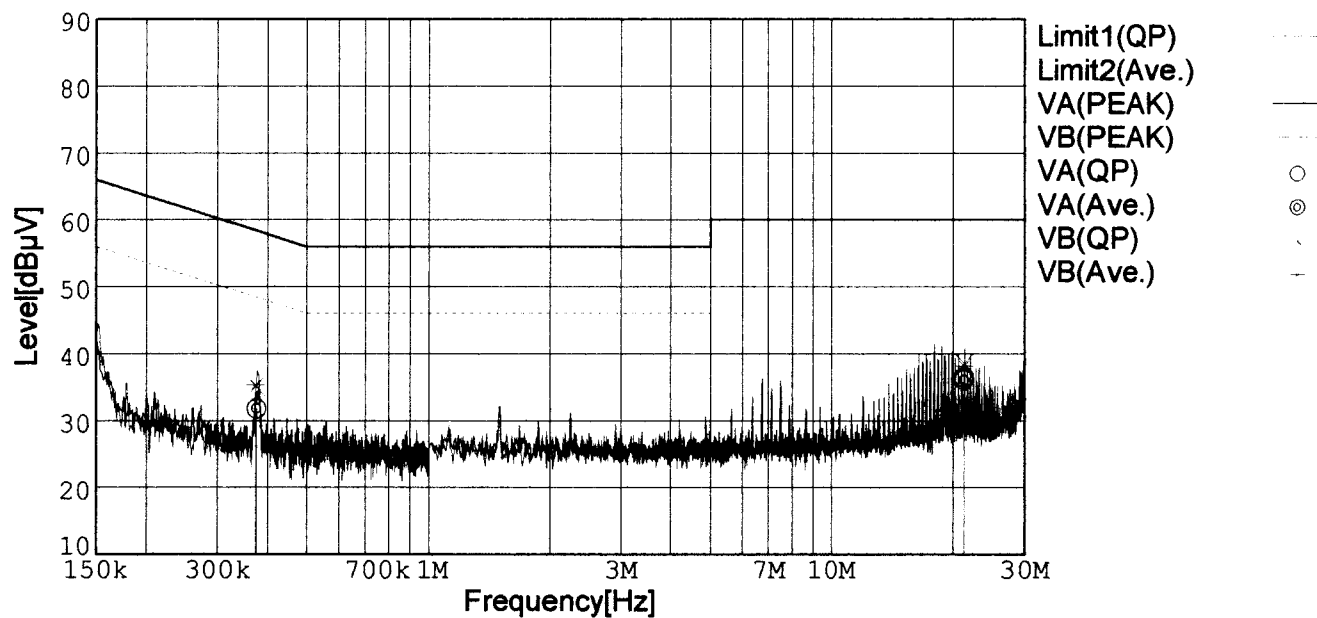
Temp. : 25degC

Humi. : 40%

Date : 2002/7/11 14:51

Test Equip. : R3132,ESPC

Comment : DC 24V, Io=4.2A



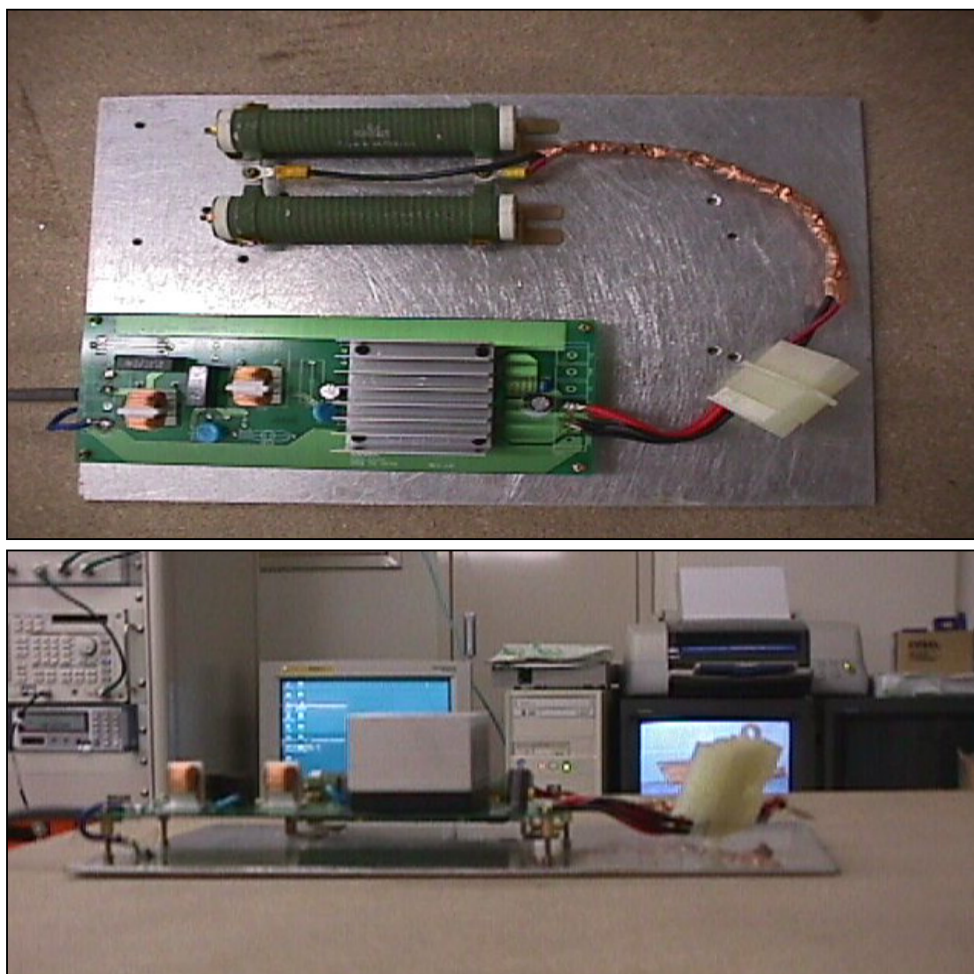
Frequency [MHz]	Meter Reading (QP) [dBμV]	Meter Reading (Ave.) [dBμV]	Factor [dB]	Level (QP) [dBμV]	Level (Ave.) [dBμV]	Line	Limit (QP) [dBμV]	Limit (Ave.) [dBμV]	Margin (QP)[dB]	Margin (Ave.) [dB]
0.3738	21.9	22.0	9.8	31.7	31.8	VA	58.4	48.4	26.7	16.6
21.2820	26.2	25.8	10.3	36.5	36.1	VA	60.0	50.0	23.5	13.9
0.3725	25.3	25.5	9.8	35.1	35.3	VB	58.5	48.5	23.4	13.2
21.2807	28.2	27.9	10.3	38.5	38.2	VB	60.0	50.0	21.5	11.8

Conditions

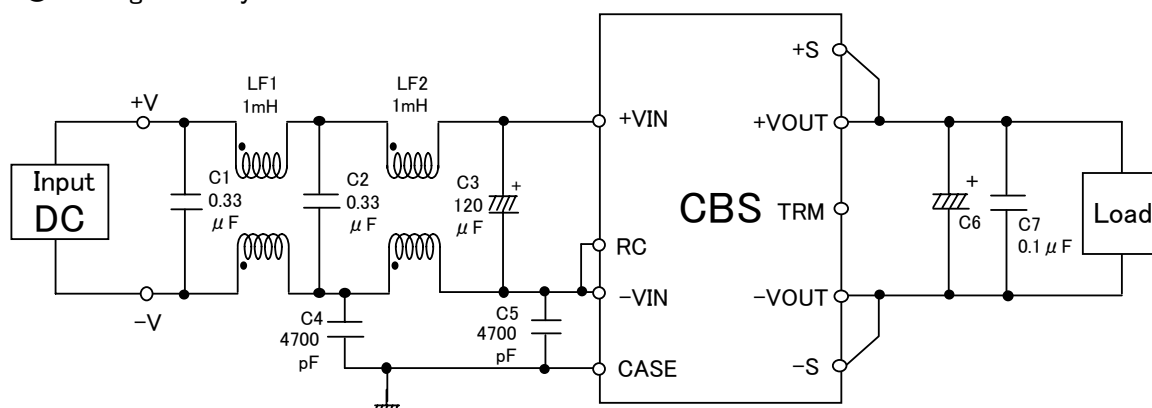
Date 2002/7/19

Test : LINE CONDUCTION
Model Name : CBS1002403/15/24

○Photographs of Test Set-Up



○Testing circuitry



- LF1、LF2 : SC-05-10J (TOKIN)
C1、C2 : CFJC22E334M (Nitsuko)
C3 : 50V 120 μ F PMseries (nichicon)
C4、C5 : DE1307-640E472M-KH (MURATA)
C6 : CBS1002403 10V 2200 μ F LXZseries (NIPPON CHEMI-CON)
CBS1002415 25V 470 μ F LXZseries (NIPPON CHEMI-CON)
CBS1002424 35V 220 μ F LXZseries (NIPPON CHEMI-CON)
C7 : MDD21H104M (Nitsuko)

Fig. Testing circuitry