



RADIATED EMISSION

Model Name : CBS1002428

Model No. :

Serial No. :

Points : 2

Detector : PEAK/QP

Polarization : Hori. & Vert.

Limit: [EN 55022] Class B<3m>

Power Supply :

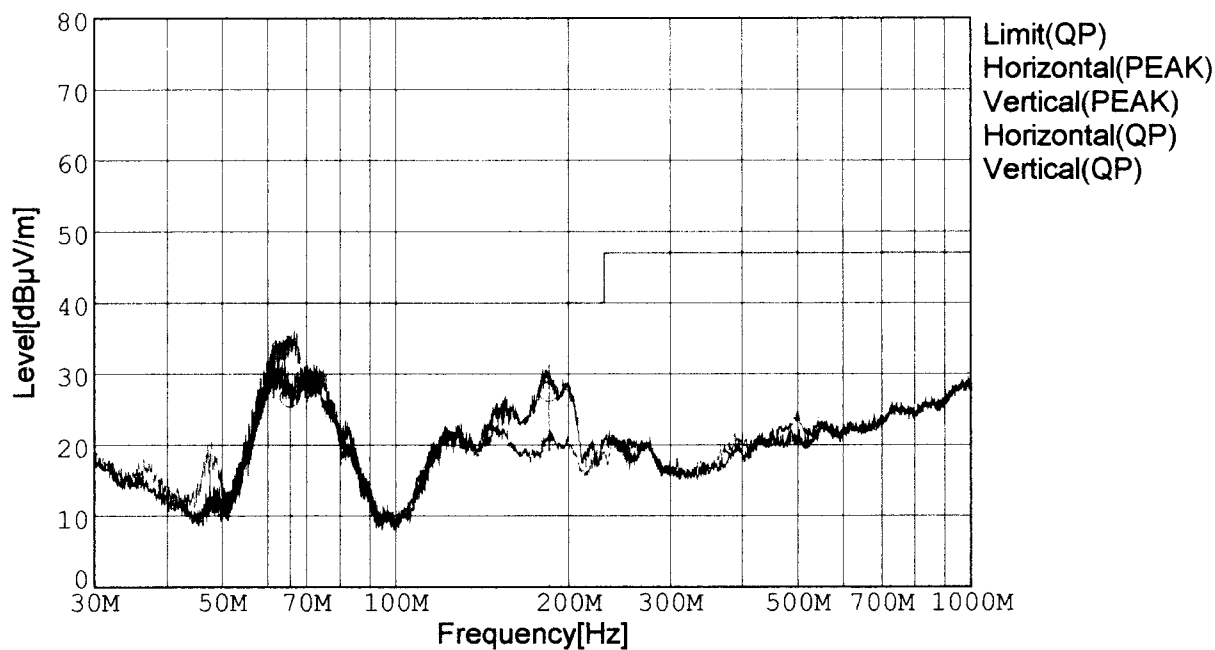
Temp. : 25degC

Humi. : 40%

Date : 2002/2/22 17:06

Test Equip. : R3132,ESPC

Comment : DC24V Io=3.6A



Frequency [MHz]	Meter Reading (QP) [dBμV]	Ant. Type	Antenna Factor [dB/m]	Cable & Preamp [dB]	Level (QP) [dBμV/m]	Angle[°]	Height [cm]	Polar.	Limit [dBμV/m]	Margin [dB]
65.539	53.6	BL	4.9	-31.8	26.7	289	143	Hori.	40.0	13.3
184.766	50.3	BL	8.4	-31.2	27.5	263	154	Hori.	40.0	12.5
66.082	61.4	BL	4.9	-31.8	34.5	354	120	Vert.	40.0	5.5
184.597	42.2	BL	8.4	-31.2	19.4	110	159	Vert.	40.0	20.6

BL: Biconi-Log

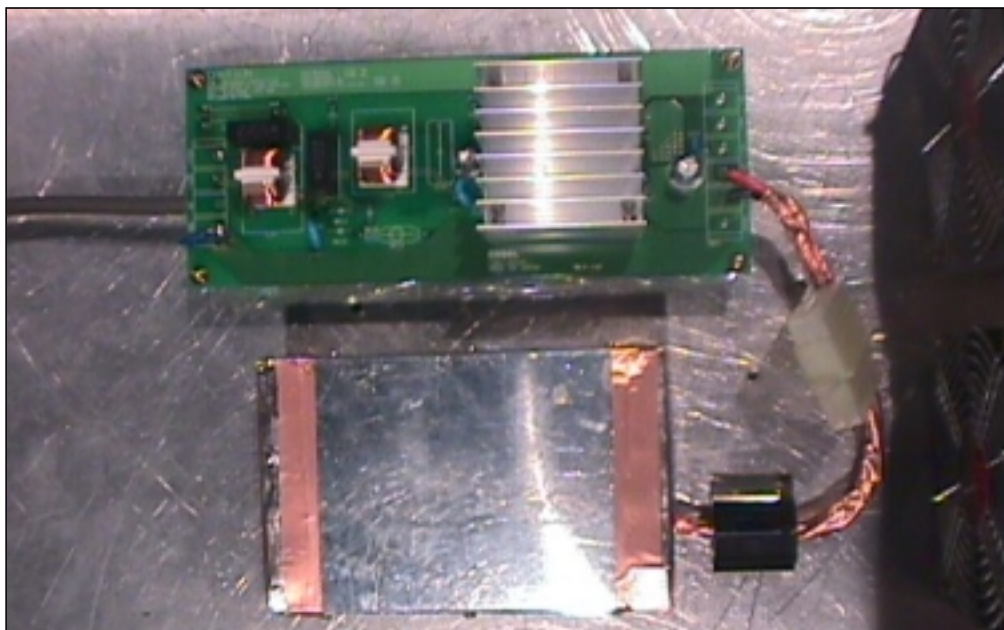
Conditions

Date 2002/2/22

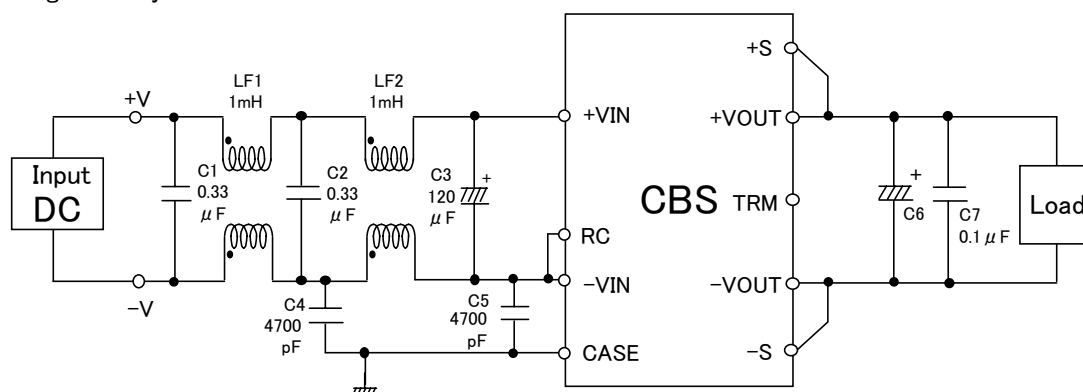
Test : RADIATED EMISSION

Model Name : CBS1002428

○Photographs of Test Set-Up



○Testing circuitry



LF1、LF2 : SC-05-10J (TOKIN)

C1、C2 : CFJC22E334M (Nitsuko)

C3 : 50V 120 μ F PMseries (nichicon)

C4、C5 : DE1307-640E472M-KH (MURATA)

C6 : 35V 220 μ F LXZseries (NIPPON CHEMI-CON)

C7 : MDD21H104M (Nitsuko)

Fig. Testing circuitry

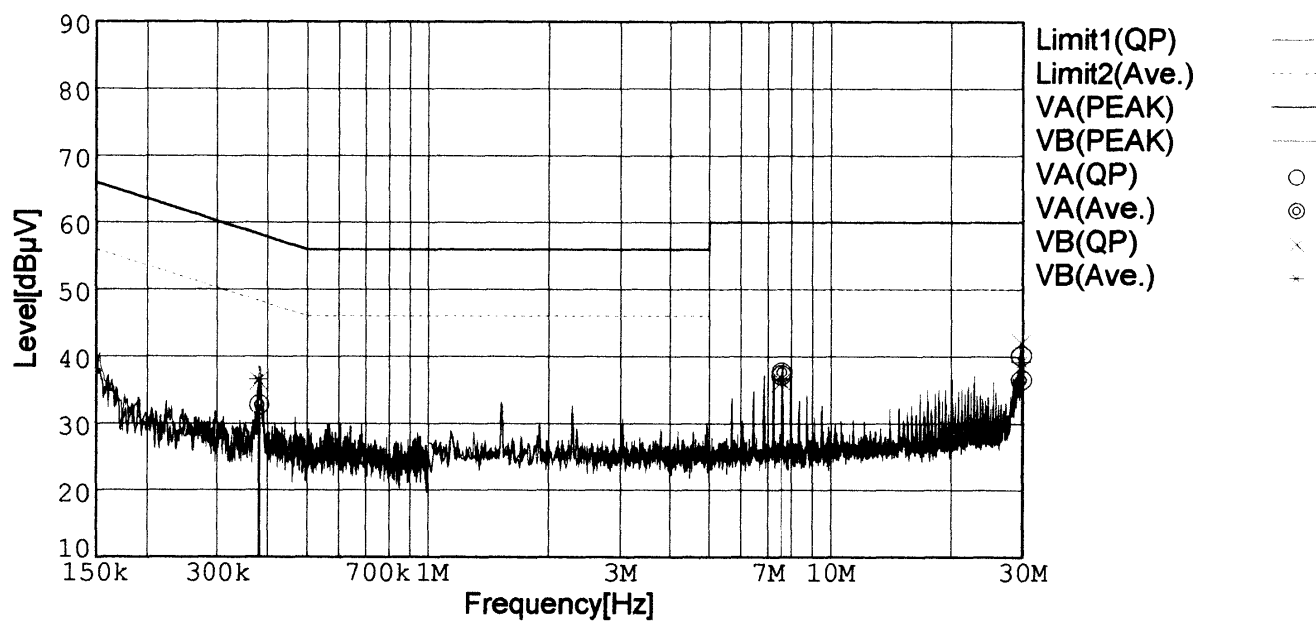
LINE CONDUCTION

Model Name : CBS1002428
 Model No. :
 Serial No. :
 Points : 3
 Detector : PEAK/QP/Ave.
 Line Mode : VA/VB

Power Supply :
 Temp. : 25degC
 Humi. : 40%
 Date : 2002/2/22 14:40
 Test Equip. : R3132,ESPC
 Comment : DC24V Io=3.6A

Limit1: [EN 55022] Class B(QP)

Limit2: [EN 55022] Class B(Ave.)



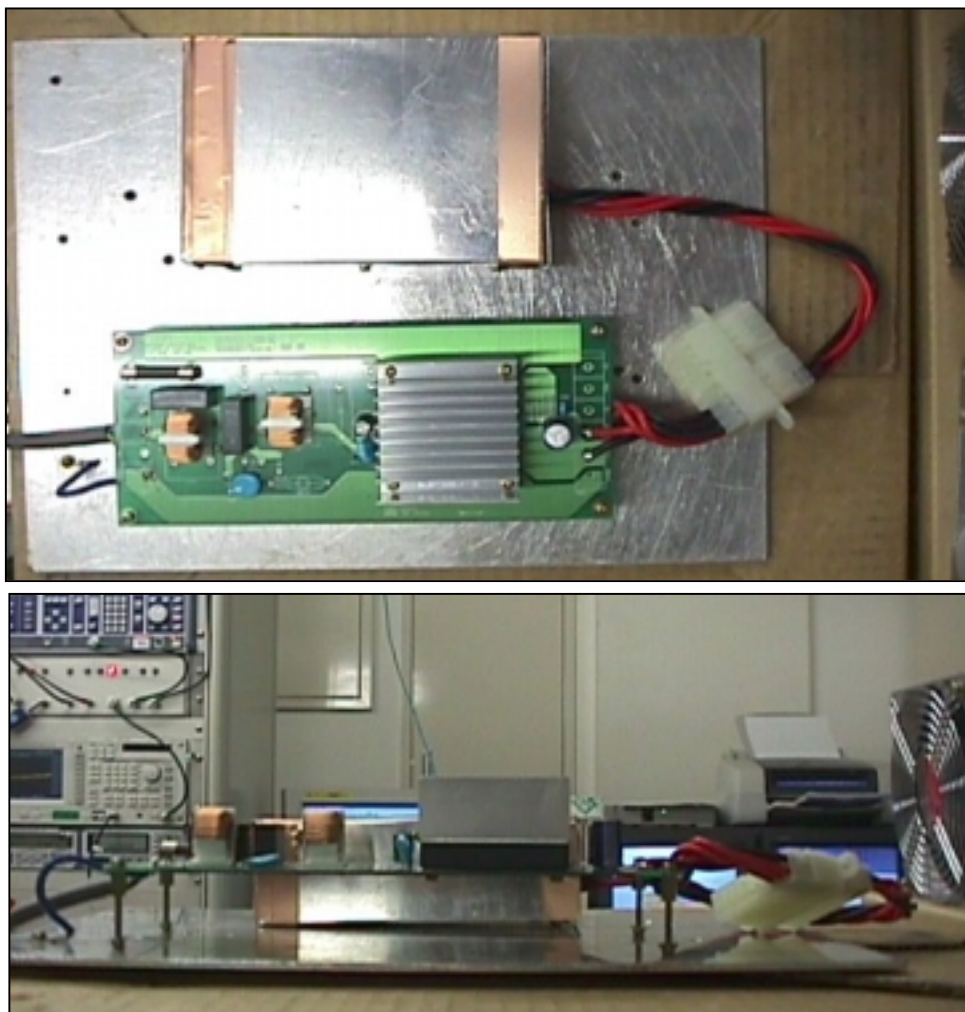
Frequency [MHz]	Meter Reading (QP) [dBμV]	Meter Reading (Ave.) [dBμV]	Factor [dB]	Level (QP) [dBμV]	Level (Ave.) [dBμV]	Line	Limit (QP) [dBμV]	Limit (Ave.) [dBμV]	Margin (QP)[dB]	Margin (Ave.) [dB]
0.3814	22.9	22.9	9.8	32.7	32.7	VA	58.3	48.3	25.6	15.6
7.5473	27.1	27.6	10.0	37.1	37.6	VA	60.0	50.0	22.9	12.4
29.8018	29.7	26.1	10.4	40.1	36.5	VA	60.0	50.0	19.9	13.5
0.3785	26.5	26.8	9.8	36.3	36.6	VB	58.3	48.3	22.0	11.7
7.5492	26.2	26.7	10.0	36.2	36.7	VB	60.0	50.0	23.8	13.3
29.7969	31.6	28.8	10.4	42.0	39.2	VB	60.0	50.0	18.0	10.8

Conditions

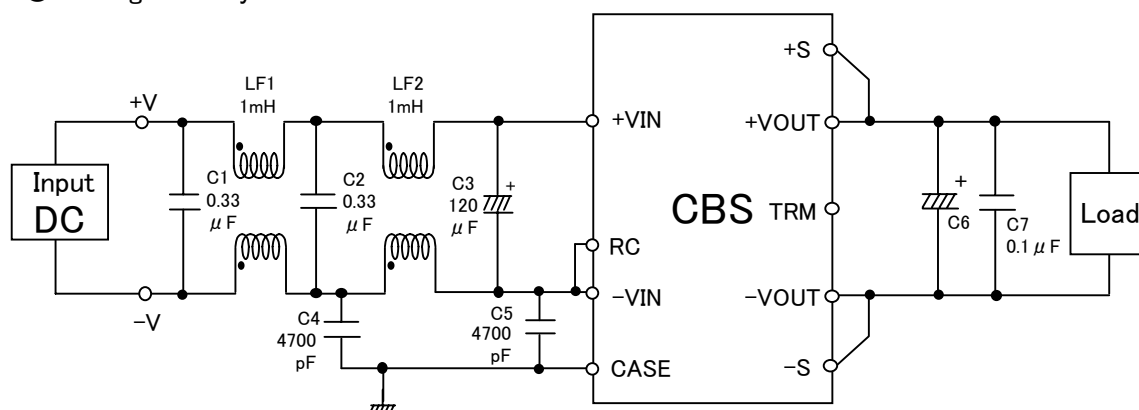
Date 2002/2/22

Test : LINE CONDUCTION
 Model Name : CBS1002428

○Photographs of Test Set-Up



○Testing circuitry



LF1、LF2 : SC-05-10J (TOKIN)
 C1、C2 : CFJC22E334M (Nitsuko)
 C3 : 50V 120 μ F PMseries (nichicon)
 C4、C5 : DE1307-640E472M-KH (MURATA)
 C6 : 35V 220 μ F LXZseries (NIPPON CHEMI-CON)
 C7 : MDD21H104M (Nitsuko)

Fig. Testing circuitry