



# RADIATED EMISSION

Model Name : CBS2002403

Model No. :

Serial No. :

Points : 4

Detector : PEAK/QP

Polarization : Hori. & Vert.

Power Supply : DC 24V

Limit: [EN 55022] Class B<3m>

Temp. : 25degC

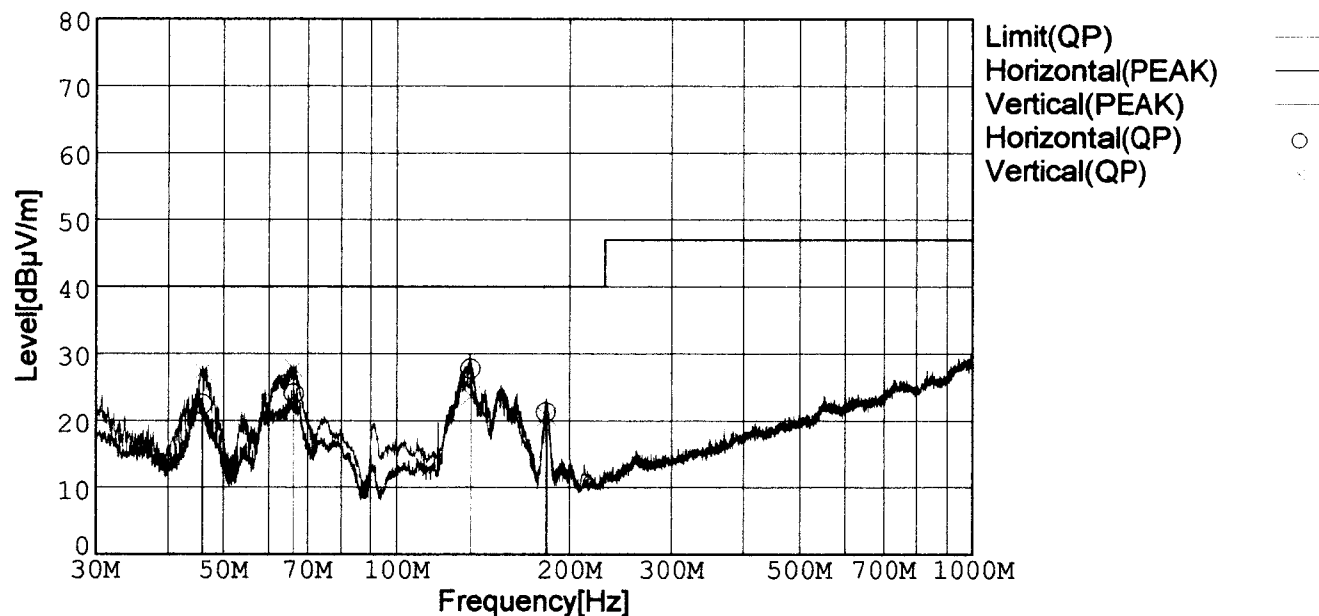
Humi. : 40%

Date : 2002/3/13 0:38

Test Equip. : R3132,ESPC

Comment : Vo=3.3V, Io=35A

Tested by : T.Oiwake



Frequency [MHz]	Meter Reading (QP) [dBμV]	Ant. Type	Antenna Factor [dB/m]	Cable & Preamp [dB]	Level (QP) [dBμV/m]	Angle[°]	Height [cm]	Polar.	Limit [dBμV/m]	Margin [dB]
45.981	44.6	BL	9.7	-31.9	22.4	85	102	Hori.	40.0	17.6
66.375	50.8	BL	5.0	-31.8	24.0	258	159	Hori.	40.0	16.0
134.201	48.2	BL	11.0	-31.4	27.8	240	150	Hori.	40.0	12.2
181.631	44.1	BL	8.4	-31.2	21.3	93	160	Hori.	40.0	18.7
45.989	49.6	BL	9.7	-31.9	27.4	336	103	Vert.	40.0	12.6
66.358	54.5	BL	5.0	-31.8	27.7	338	116	Vert.	40.0	12.3
134.204	44.1	BL	11.0	-31.4	23.7	145	153	Vert.	40.0	16.3
182.424	43.4	BL	8.4	-31.2	20.6	150	101	Vert.	40.0	19.4

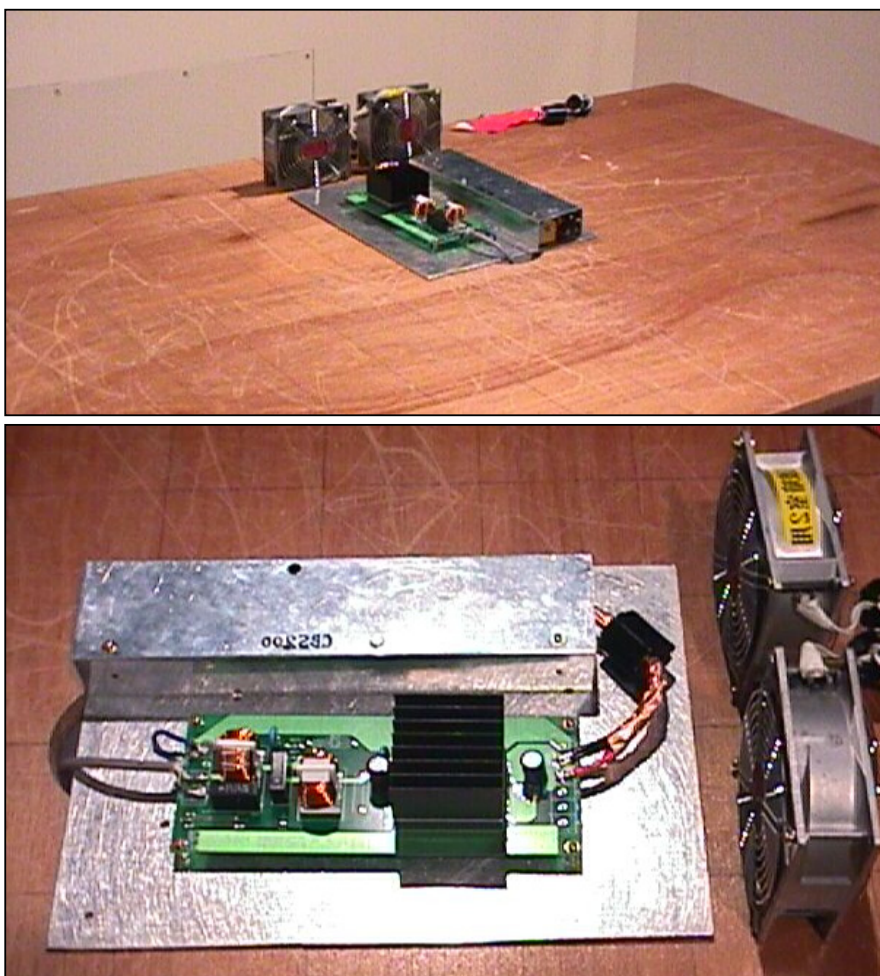
BL: Biconi-Log

## Conditions

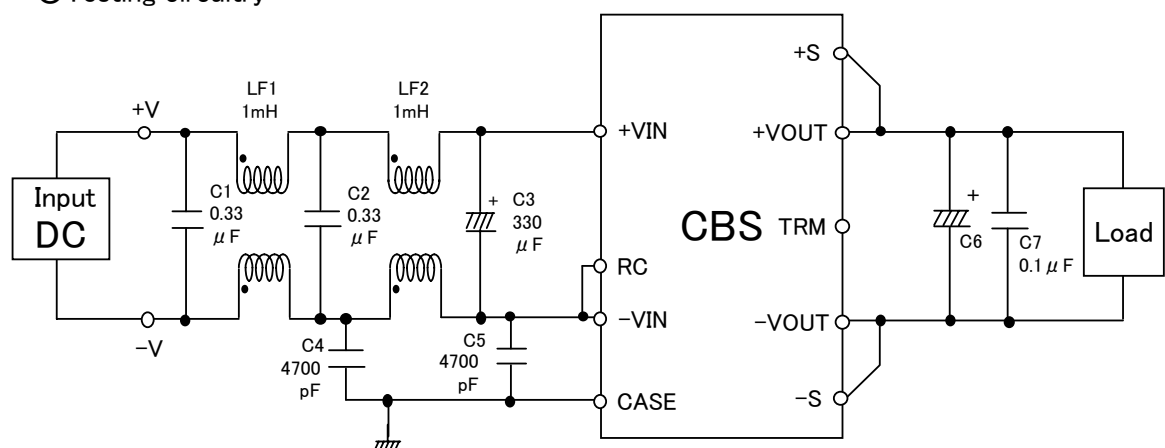
Date 2002/4/17

Test : RADIATED EMISSION  
 Model Name : CBS20024

## ○Photographs of Test Set-Up



## ○Testing circuitry



- LF1、LF2 : SC-10-10J(TOKIN)  
 C1、C2 : CFJC22E334M (Nitsuko)  
 C3 : 50V 330  $\mu$  F PMseries (nichicon)  
 C4、C5 : DE1307-640E472M-KH (MURATA)  
 C6 : CBS2002403/05 10V 2200  $\mu$  F LXZseries (NIPPON CHEMI-CON)  
       CBS2002412/15 25V 1000  $\mu$  F LXZseries (NIPPON CHEMI-CON)  
       CBS2002424/28 35V 470  $\mu$  F LXZseries (NIPPON CHEMI-CON)  
 C7 : MDD21H104M (Nitsuko)

Fig. Testing circuitry

## LINE CONDUCTION

Model Name : CBS2002403

Model No. :

Serial No. :

Points : 2

Detector : PEAK/QP/Ave.

Line Mode : VA/VB

Power Supply : DC 48V

Limit1: [EN 55022] Class B(QP)

Limit2: [EN 55022] Class B(Ave.)

Temp. : 25degC

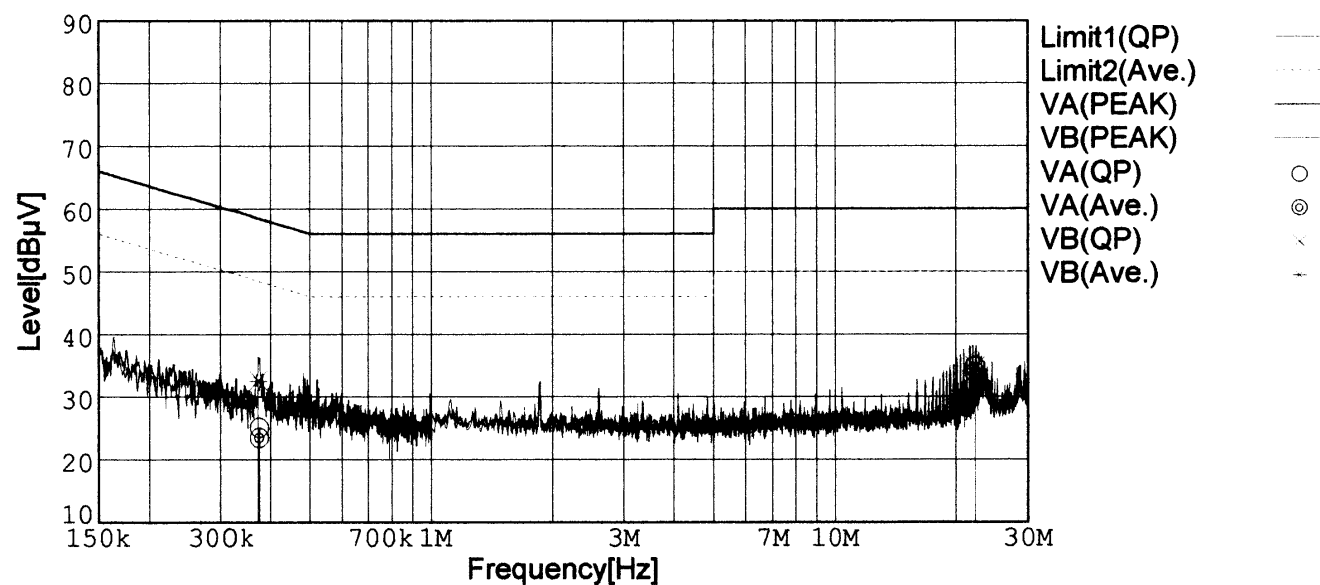
Humi. : 40%

Date : 2002/3/4 22:49

Test Equip. : R3132,ESPC

Comment : Vo=3.3V, Io=35A

Tested by : T.Oiwake



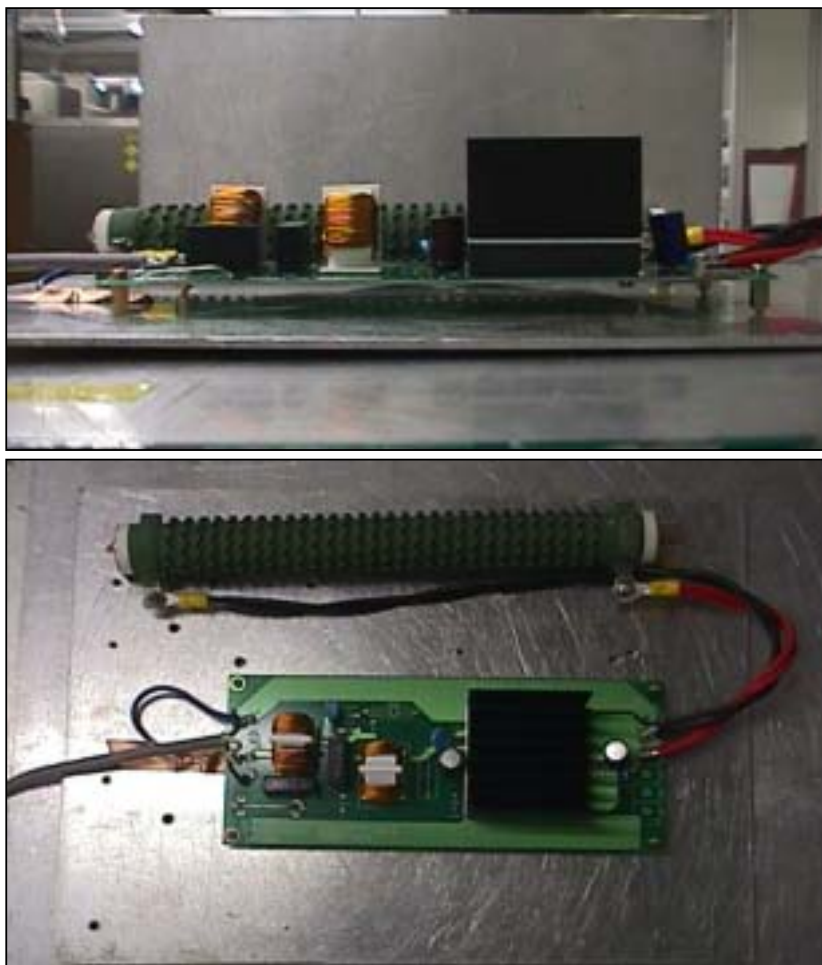
Frequency [MHz]	Meter Reading (QP) [dBμV]	Meter Reading (Ave.) [dBμV]	Factor [dB]	Level (QP) [dBμV]	Level (Ave.) [dBμV]	Line	Limit (QP) [dBμV]	Limit (Ave.) [dBμV]	Margin (QP)[dB]	Margin (Ave.) [dB]
22.2315	24.5	24.2	10.3	34.8	34.5	VB	60.0	50.0	25.2	15.5
0.3711	22.9	22.7	9.8	32.7	32.5	VB	58.5	48.5	25.8	16.0
22.2403	24.5	23.5	10.3	34.8	33.8	VA	60.0	50.0	25.2	16.2
0.3744	15.3	13.7	9.8	25.1	23.5	VA	58.4	48.4	33.3	24.9

# Conditions

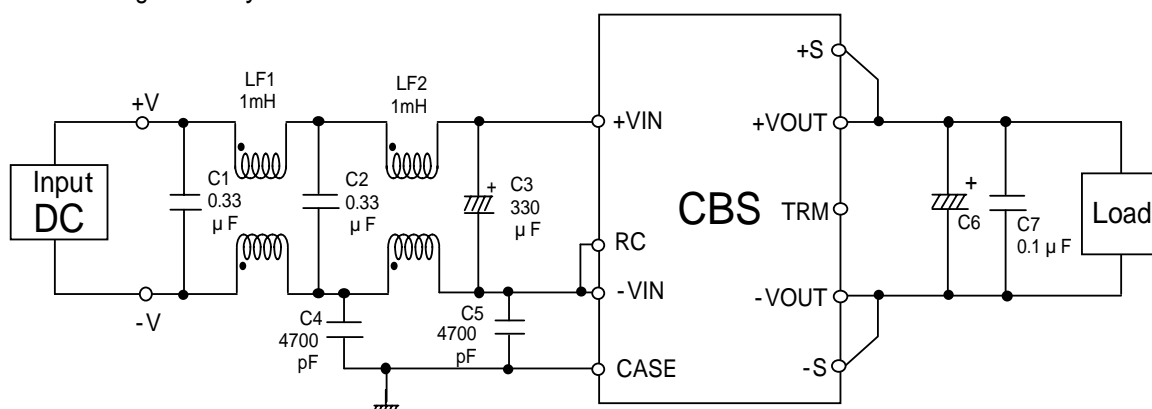
Date 2002/4/17

Test : LINE CONDUCTION  
Model Name : CBS20024

## Photographs of Test Set-Up



## Testing circuitry



LF1, LF2 : SC-10-10J (TOKIN)  
C1, C2 : CFJC22E334M (Nitsuko)  
C3 : 50V 330  $\mu$ F PMseries (nichicon)  
C4, C5 : DE1307-640E472M-KH (MURATA)  
C6 : CBS2002403/05 10V 2200  $\mu$ F LXZseries (NIPPON CHEMI-CON)  
CBS2002412/15 25V 1000  $\mu$ F LXZseries (NIPPON CHEMI-CON)  
CBS2002424/28 35V 470  $\mu$ F LXZseries (NIPPON CHEMI-CON)  
C7 : MDD21H104M (Nitsuko)

Fig. Testing circuitry