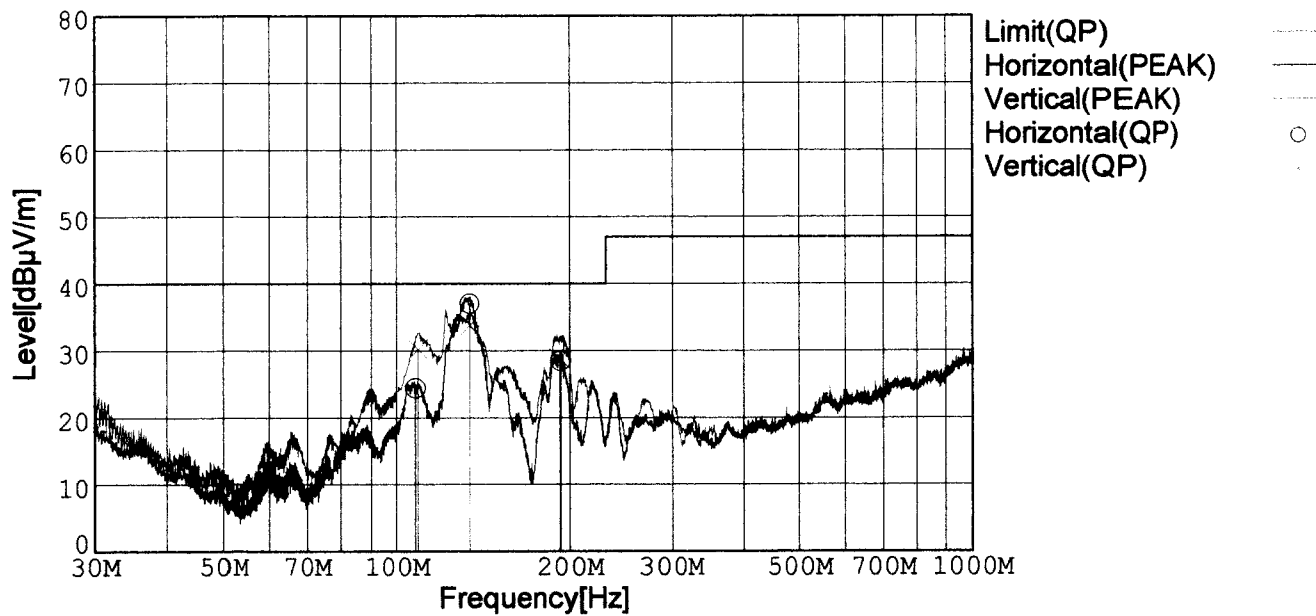




# RADIATED EMISSION

Model Name : CBS2002415  
 Model No. :  
 Serial No. :  
 Points : 3  
 Detector : PEAK/QP  
 Polarization : Hori. & Vert.  
 Power Supply : DC 24V  
 Limit: [EN 55022] Class B<3m>

Temp. : 25degC  
 Humi. : 40%  
 Date : 2002/3/12 10:16  
 Test Equip. : R3132,ESPC  
 Comment : Vo=15V, Io=13.4A  
 Tested by : T.Oiwake



Frequency [MHz]	Meter Reading (QP) [dBμV]	Ant. Type	Antenna Factor [dB/m]	Cable & Preamp [dB]	Level (QP) [dBμV/m]	Angle[°]	Height [cm]	Polar.	Limit [dBμV/m]	Margin [dB]
133.695	57.3	BL	11.1	-31.4	37.0	288	158	Hori.	40.0	3.0
133.654	54.1	BL	11.1	-31.4	33.8	46	148	Vert.	40.0	6.2
108.924	51.1	BL	10.6	-31.5	30.2	3	149	Vert.	40.0	9.8
192.395	51.8	BL	8.3	-31.2	28.9	196	105	Vert.	40.0	11.1
193.146	51.3	BL	8.4	-31.2	28.5	253	156	Hori.	40.0	11.5
107.813	45.5	BL	10.5	-31.6	24.4	269	157	Hori.	40.0	15.6

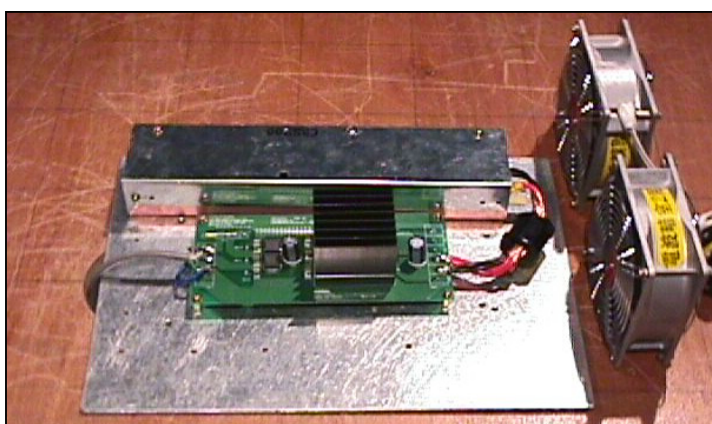
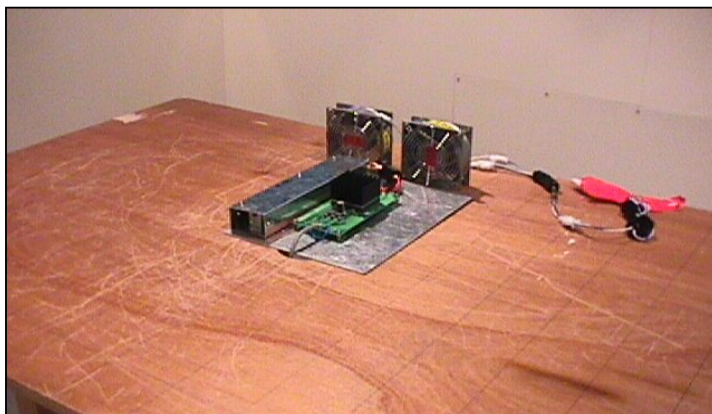
BL: Biconi-Log

# Conditions

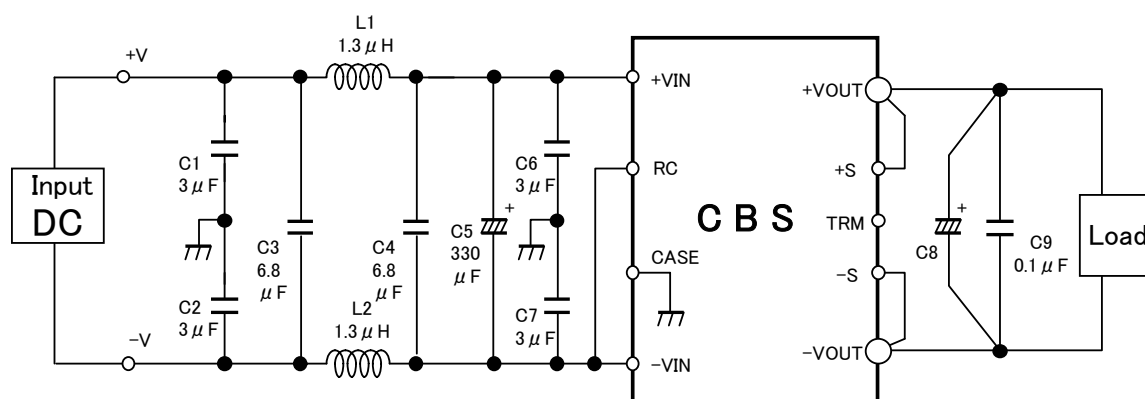
Date 2002/4/17

Test : RADIATED EMISSION  
Model Name : CBS20024

## ○Photographs of Test Set-Up



## ○Testing circuitry



L1、L2 : ETQP6F1R3LFA (MATSUSHITA)  
C1、C2、C6、C7 : CY55Y5P2A305M (TOKIN)  
C3、C4 : CY55Y5U2A685S (TOKIN)  
C5 : 50V 330 μ F PMseries (nichicon)  
C8 : CBS2002403/05 10V 2200 μ F LXZseries (NIPPON CHEMI-CON)  
CBS2002412/15 25V 1000 μ F LXZseries (NIPPON CHEMI-CON)  
CBS2002424/28 35V 470 μ F LXZseries (NIPPON CHEMI-CON)  
C9 : MDD21H104M (Nitsuko)

Fig. Testing circuitry

## LINE CONDUCTION

Model Name : CBS2002415

Model No. :

Serial No. :

Points : 3

Detector : PEAK/QP/Ave.

Line Mode : VA/VB

Power Supply : DC 24V

Limit1: [EN 55022] Class B(QP)

Limit2: [EN 55022] Class B(Ave.)

Temp. : 25degC

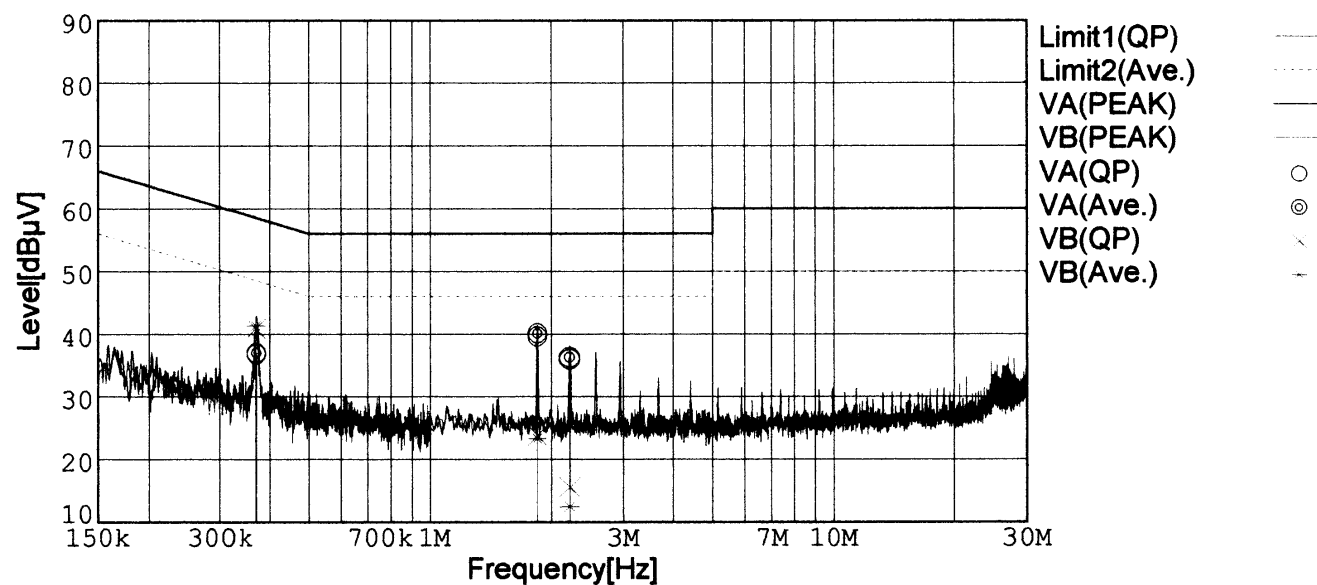
Humi. : 40%

Date : 2002/3/5 2:38

Test Equip. : R3132,ESPC

Comment : Vo=15V, Io=13.4A

Tested by : T.Oiwake



Frequency [MHz]	Meter Reading (QP) [dBμV]	Meter Reading (Ave.) [dBμV]	Factor [dB]	Level (QP) [dBμV]	Level (Ave.) [dBμV]	Line	Limit (QP) [dBμV]	Limit (Ave.) [dBμV]	Margin (QP)[dB]	Margin (Ave.) [dB]
0.3693	27.0	27.2	9.8	36.8	37.0	VA	58.5	48.5	21.7	11.5
1.8410	29.7	30.2	9.9	39.6	40.1	VA	56.0	46.0	16.4	5.9
2.2085	26.0	26.4	9.9	35.9	36.3	VA	56.0	46.0	20.1	9.7
0.3682	31.1	31.6	9.8	40.9	41.4	VB	58.6	48.6	17.7	7.2
1.8408	13.9	13.4	9.9	23.8	23.3	VB	56.0	46.0	32.2	22.7
2.2103	5.6	2.6	9.9	15.5	12.5	VB	56.0	46.0	40.5	33.5

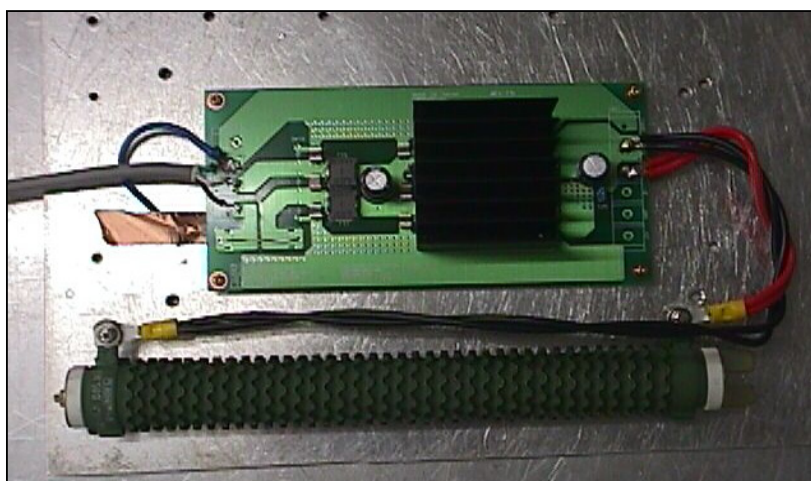
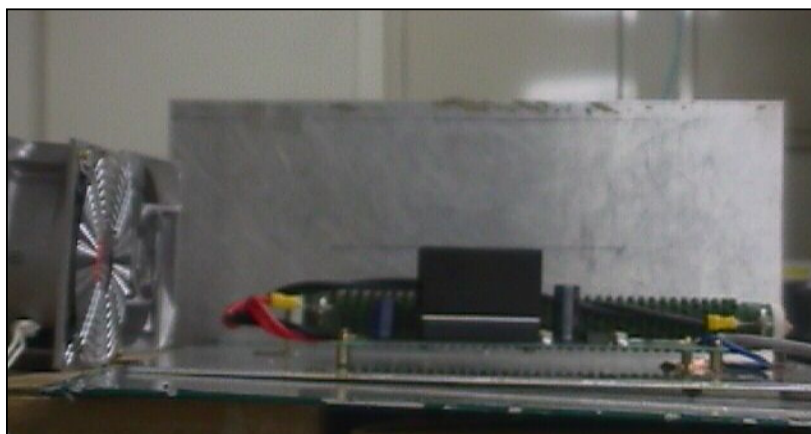
# Conditions

Date 2002/4/17

Test : LINE CONDUCTION

Model Name : CBS20024

○Photographs of Test Set-Up



○Testing circuitry

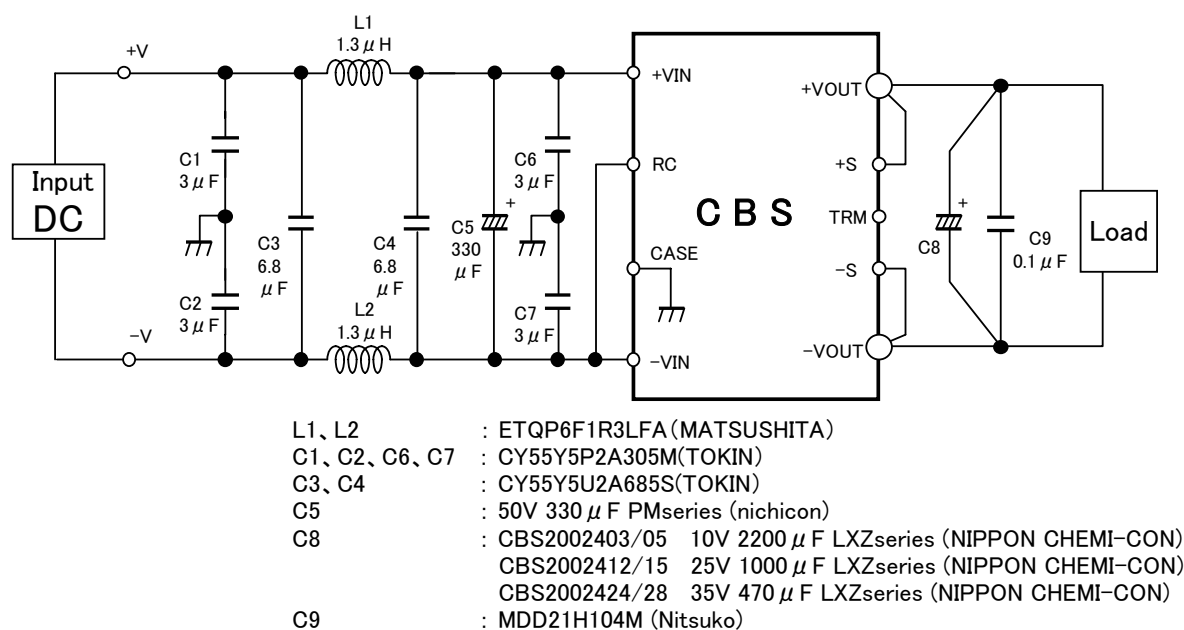


Fig. Testing circuitry