

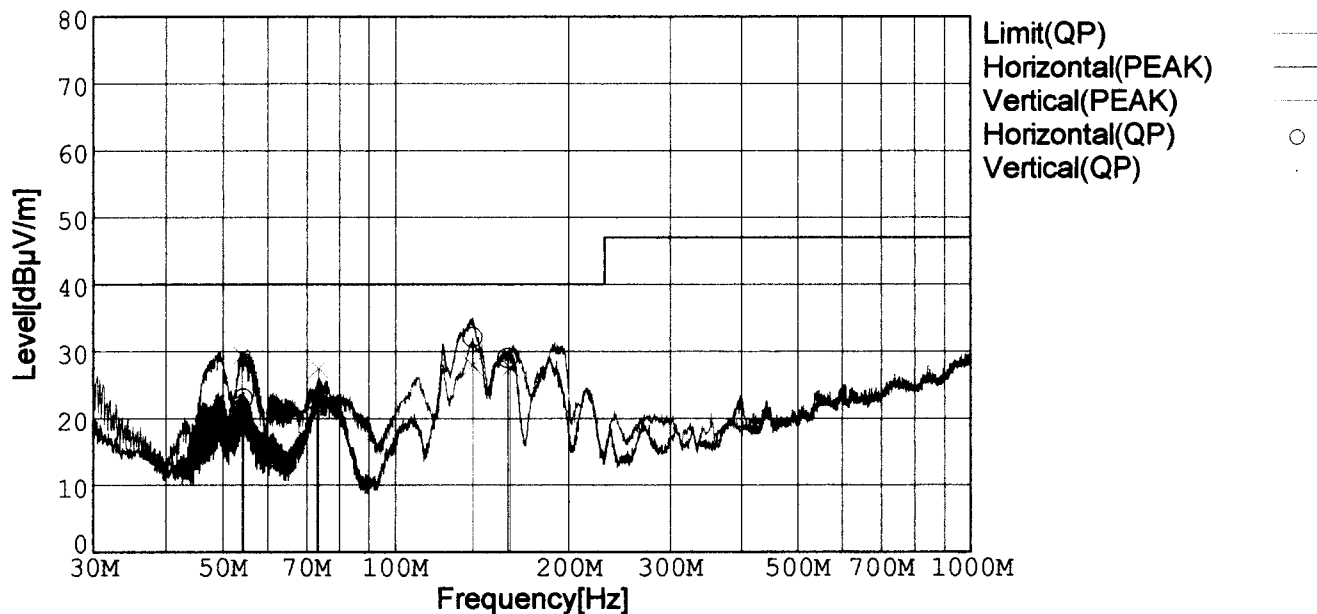


RADIATED EMISSION

Model Name : CBS2002415
 Model No. :
 Serial No. :
 Points : 4
 Detector : PEAK/QP
 Polarization : Hori. & Vert.
 Power Supply : DC 24V

Temp. : 25degC
 Humi. : 40%
 Date : 2002/3/12 23:54
 Test Equip. : R3132,ESPC
 Comment : Vo=15V, Io=13.4A
 Tested by : T.Oiwake

Limit: [EN 55022] Class B<3m>



Frequency [MHz]	Meter Reading (QP) [dBμV]	Ant. Type	Antenna Factor [dB/m]	Cable & Preamp [dB]	Level (QP) [dBμV/m]	Angle[°]	Height [cm]	Polar.	Limit [dBμV/m]	Margin [dB]
54.226	48.9	BL	5.9	-31.9	22.9	239	105	Hori.	40.0	17.1
73.039	48.1	BL	6.0	-31.7	22.4	247	154	Hori.	40.0	17.6
136.454	52.5	BL	11.0	-31.4	32.1	90	144	Hori.	40.0	7.9
156.775	50.2	BL	10.1	-31.3	29.0	257	157	Hori.	40.0	11.0
53.847	55.2	BL	6.1	-31.9	29.4	39	119	Vert.	40.0	10.6
73.396	53.1	BL	6.1	-31.7	27.5	11	115	Vert.	40.0	12.5
136.480	48.3	BL	11.0	-31.4	27.9	199	135	Vert.	40.0	12.1
158.223	48.8	BL	10.0	-31.3	27.5	185	113	Vert.	40.0	12.5

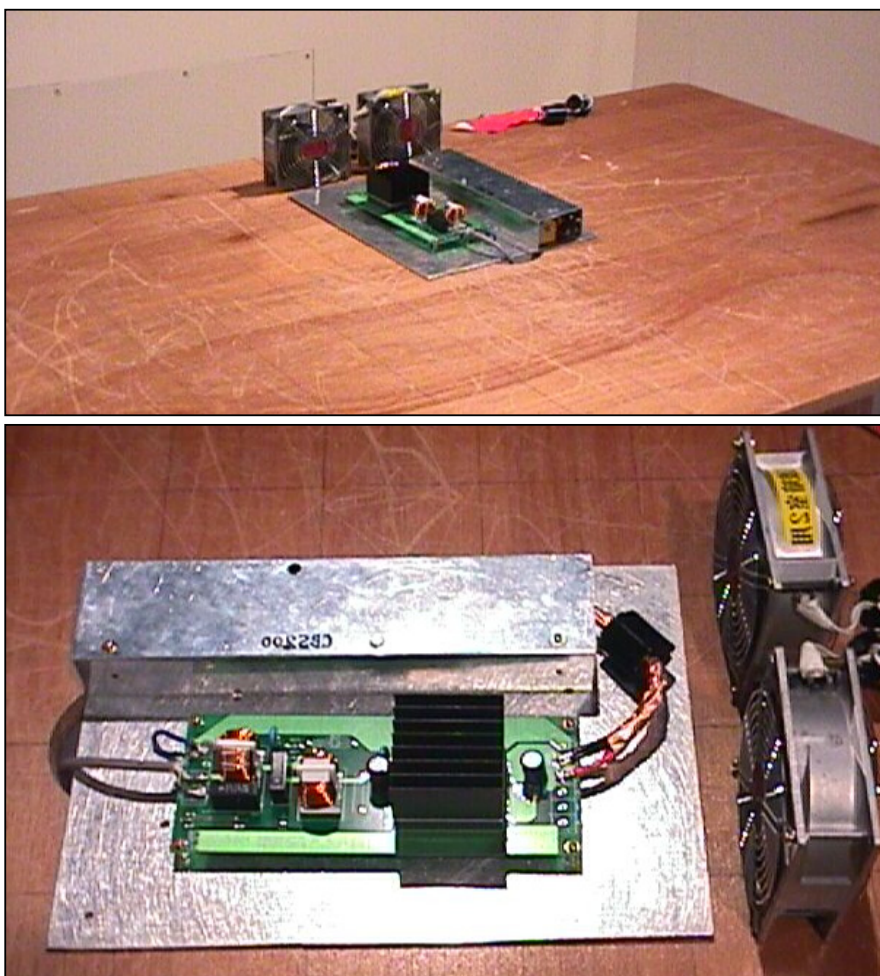
BL: Biconi-Log

Conditions

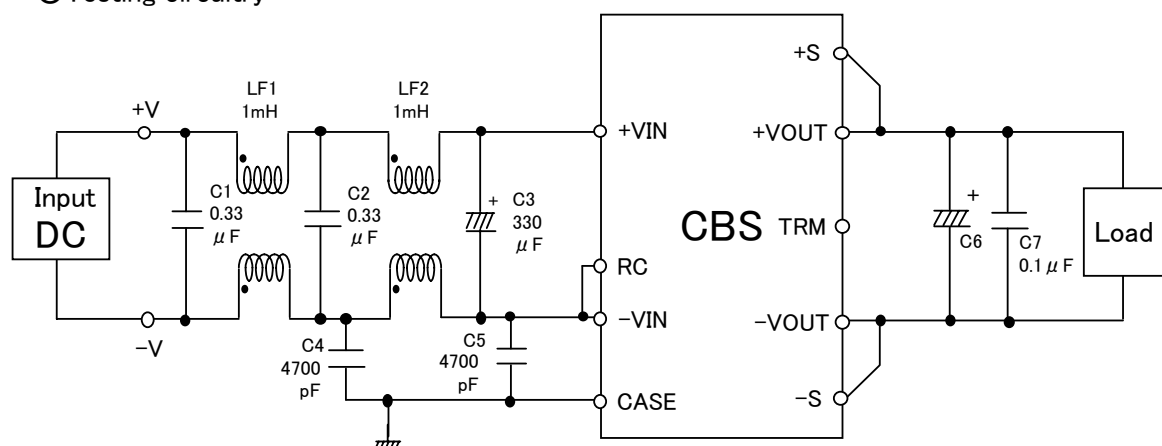
Date 2002/4/17

Test : RADIATED EMISSION
Model Name : CBS20024

○Photographs of Test Set-Up



○Testing circuitry



- LF1、LF2 : SC-10-10J(TOKIN)
 C1、C2 : CFJC22E334M (Nitsuko)
 C3 : 50V 330 μ F PMseries (nichicon)
 C4、C5 : DE1307-640E472M-KH (MURATA)
 C6 : CBS2002403/05 10V 2200 μ F LXZseries (NIPPON CHEMI-CON)
 CBS2002412/15 25V 1000 μ F LXZseries (NIPPON CHEMI-CON)
 CBS2002424/28 35V 470 μ F LXZseries (NIPPON CHEMI-CON)
 C7 : MDD21H104M (Nitsuko)

Fig. Testing circuitry

LINE CONDUCTION

Model Name : CBS2002415

Model No. :

Serial No. :

Points : 2

Detector : PEAK/QP/Ave.

Line Mode : VA/VB

Power Supply : DC 24V

Limit1: [EN 55022] Class B(QP)

Limit2: [EN 55022] Class B(Ave.)

Temp. : 25degC

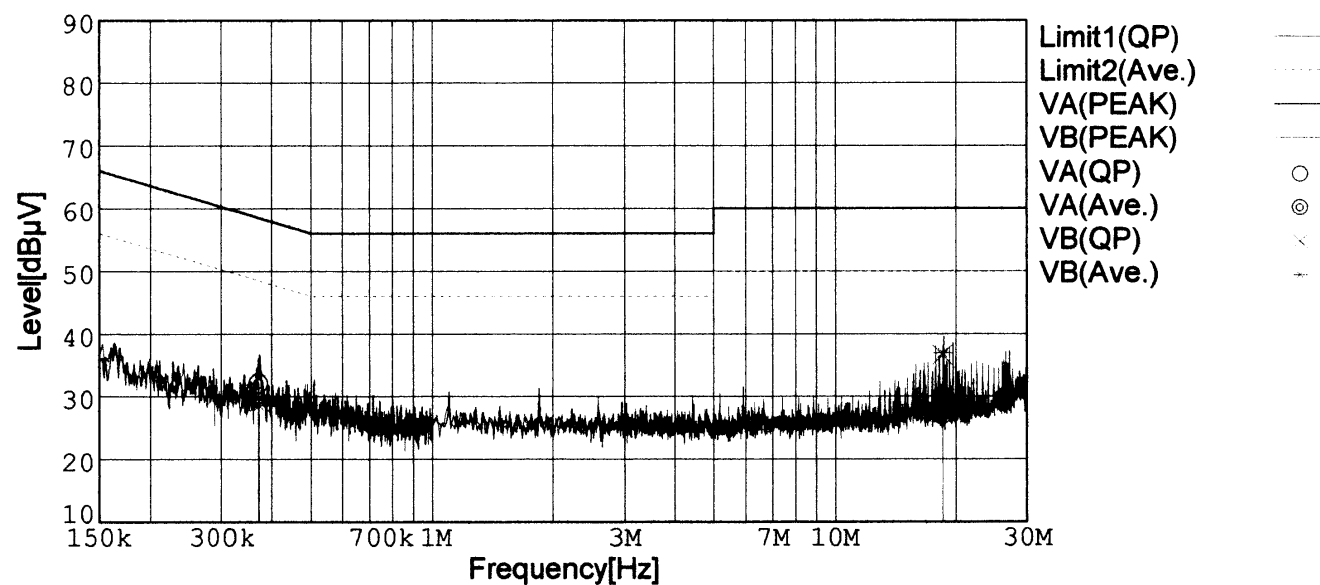
Humi. : 40%

Date : 2002/3/4 23:30

Test Equip. : R3132,ESPC

Comment : Vo=15V, Io=13.4A

Tested by : T.Oiwake



Frequency [MHz]	Meter Reading (QP) [dBμV]	Meter Reading (Ave.) [dBμV]	Factor [dB]	Level (QP) [dBμV]	Level (Ave.) [dBμV]	Line	Limit (QP) [dBμV]	Limit (Ave.) [dBμV]	Margin (QP)[dB]	Margin (Ave.) [dB]
0.3698	22.4	22.2	9.8	32.2	32.0	VA	58.5	48.5	26.3	16.5
18.4413	17.5	16.9	10.2	27.7	27.1	VA	60.0	50.0	32.3	22.9
0.3716	19.4	18.8	9.8	29.2	28.6	VB	58.5	48.5	29.3	19.9
18.4369	26.4	26.7	10.2	36.6	36.9	VB	60.0	50.0	23.4	13.1

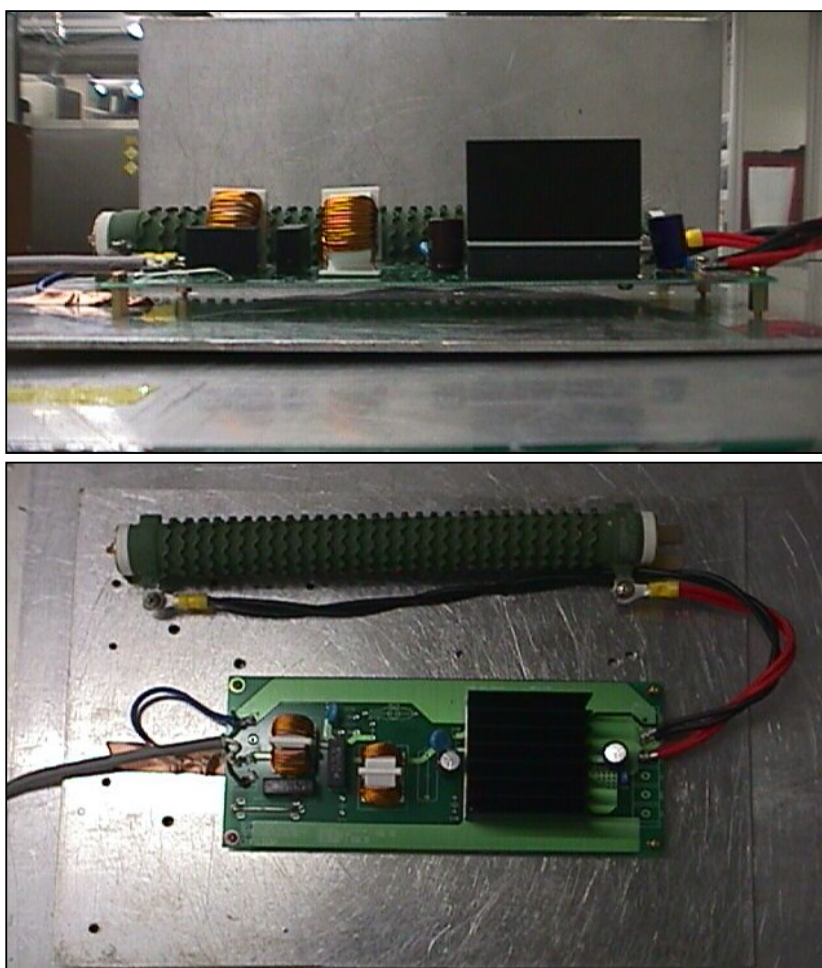
Conditions

Date 2002/4/17

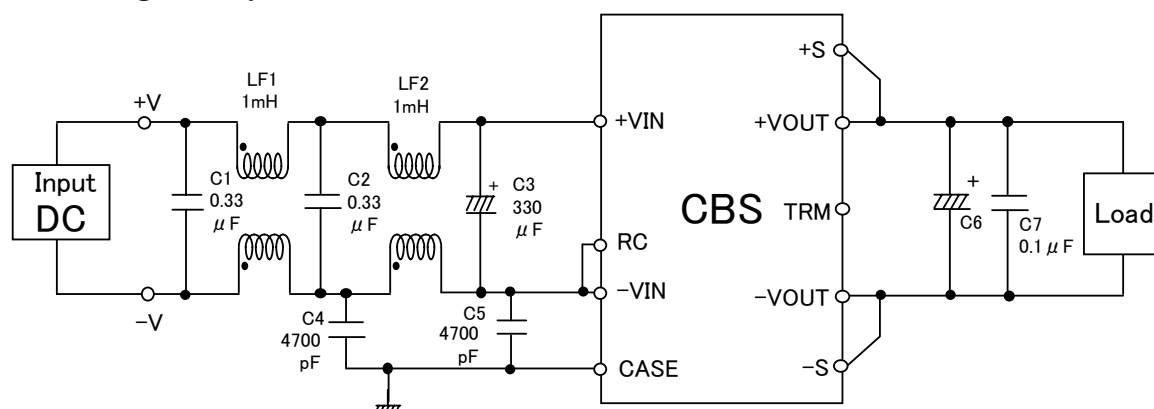
Test : LINE CONDUCTION

Model Name : CBS20024

○Photographs of Test Set-Up



○Testing circuitry



- LF1、LF2 : SC-10-10J(TOKIN)
 C1、C2 : CFJC22E334M (Nitsuko)
 C3 : 50V 330 μ F PMseries (nichicon)
 C4、C5 : DE1307-640E472M-KH (MURATA)
 C6 : CBS2002403/05 10V 2200 μ F LXZseries (NIPPON CHEMI-CON)
 CBS2002412/15 25V 1000 μ F LXZseries (NIPPON CHEMI-CON)
 CBS2002424/28 35V 470 μ F LXZseries (NIPPON CHEMI-CON)
 C7 : MDD21H104M (Nitsuko)

Fig. Testing circuitry