



# RADIATED EMISSION

Model Name : CBS2004803

Model No. :

Serial No. :

Points : 4

Detector : PEAK/QP

Polarization : Hori. & Vert.

Limit: [EN 55022] Class B<3m>

Tested by : K.Kinoshita

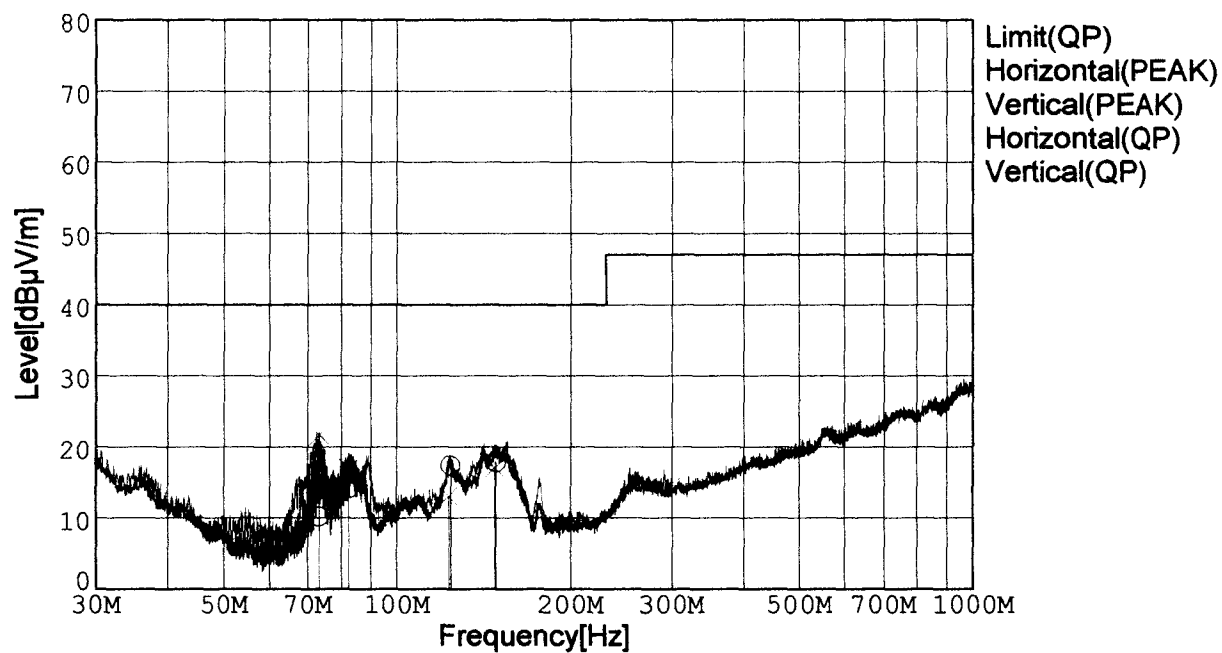
Temp. : 25degC

Humi. : 40%

Date : 2001/3/2 15:51

Test Equip. : R3132,ESPC

Comment : DC48V Io=35A



Frequency [MHz]	Meter Reading (QP) [dBμV]	Ant. Type	Antenna Factor [dB/m]	Cable & Preamp [dB]	Level (QP) [dBμV/m]	Angle[°]	Height [cm]	Polar.	Limit [dBμV/m]	Margin [dB]
73.364	35.8	BL	6.1	-31.7	10.2	253	142	Hori.	40.0	29.8
82.293	38.4	BL	7.5	-31.7	14.2	258	159	Hori.	40.0	25.8
123.978	37.8	BL	11.0	-31.5	17.3	289	145	Hori.	40.0	22.7
148.573	38.6	BL	10.6	-31.4	17.8	68	154	Hori.	40.0	22.2
73.368	47.3	BL	6.1	-31.7	21.7	2	112	Vert.	40.0	18.3
82.299	41.2	BL	7.5	-31.7	17.0	169	143	Vert.	40.0	23.0
122.914	33.5	BL	11.0	-31.5	13.0	94	148	Vert.	40.0	27.0
147.833	37.7	BL	10.7	-31.4	17.0	55	138	Vert.	40.0	23.0

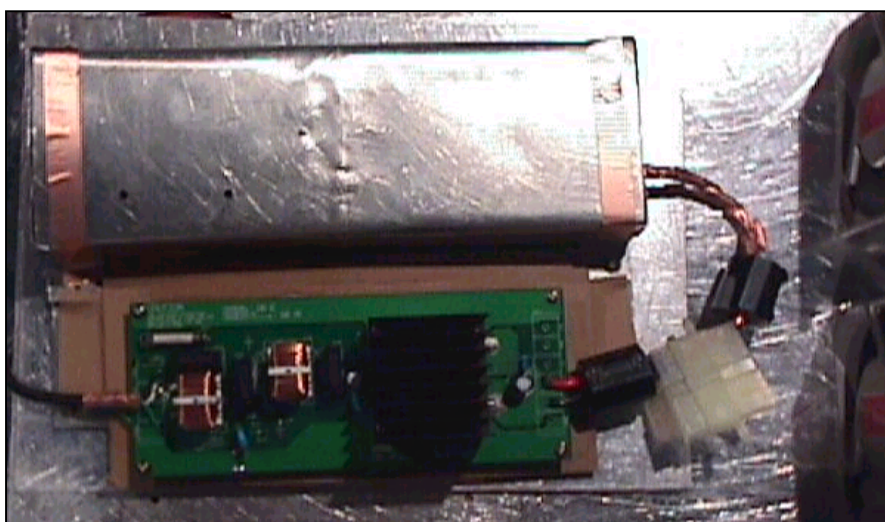
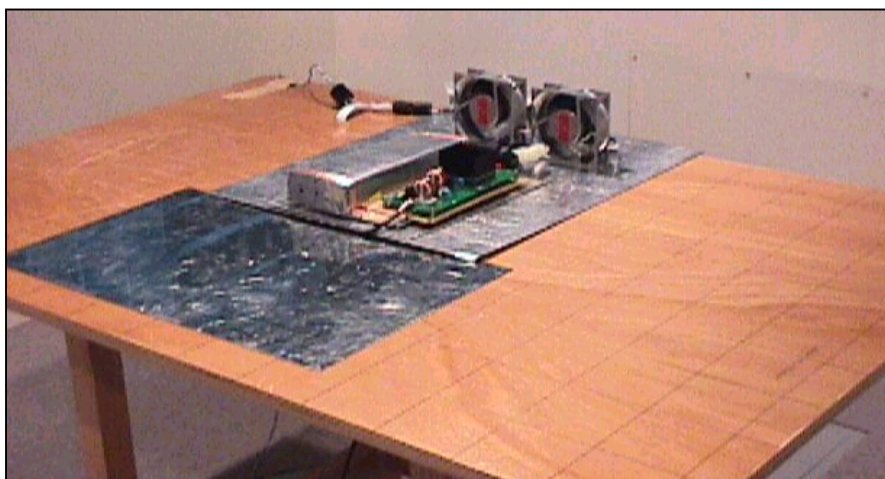
BL: Biconi-Log

## Conditions

Date 2001/3/7

Test : RADIATED EMISSION  
 Model Name : CBS20048

## ○Photographs of Test Set-Up



## ○Testing circuitry

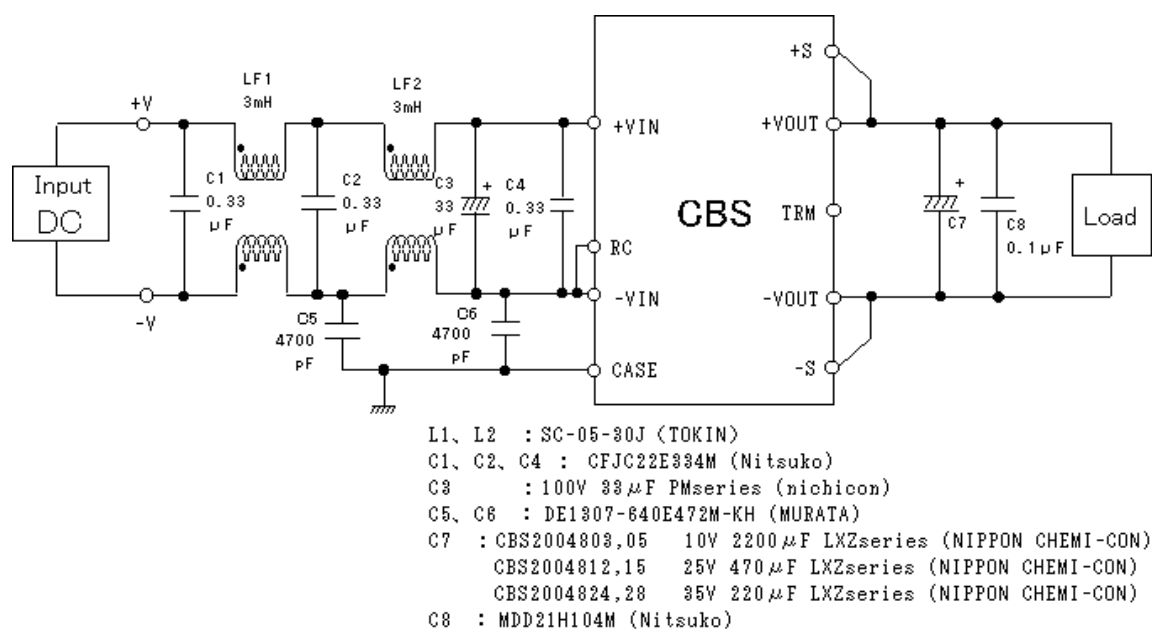


Fig. Testing circuitry



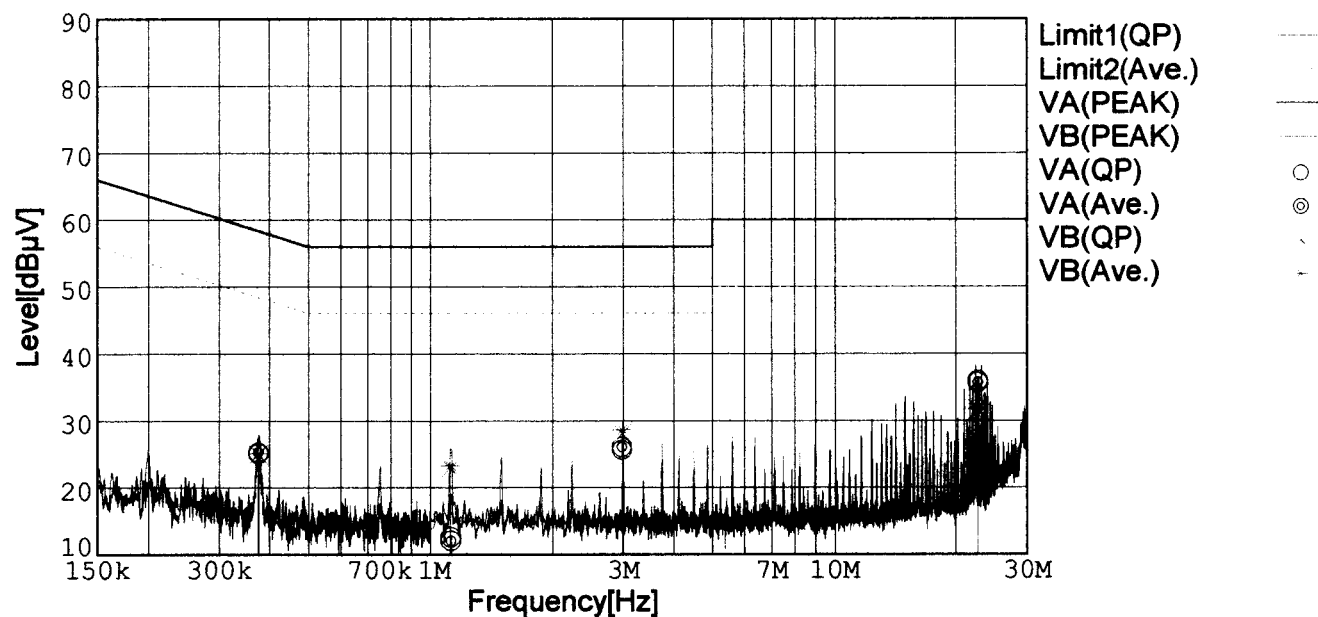
# LINE CONDUCTION

Model Name : CBS2004803  
 Model No. :  
 Serial No. :  
 Points : 4  
 Detector : PEAK/QP/Ave.  
 Line Mode : VA/VB

Tested by : K.Kinoshita  
 Temp. : 25degC  
 Humi. : 40%  
 Date : 2001/3/2 15:33  
 Test Equip. : R3132,ESPC  
 Comment : DC48V Io=35A

Limit1: [EN 55022] Class B(QP)

Limit2: [EN 55022] Class B(Ave.)



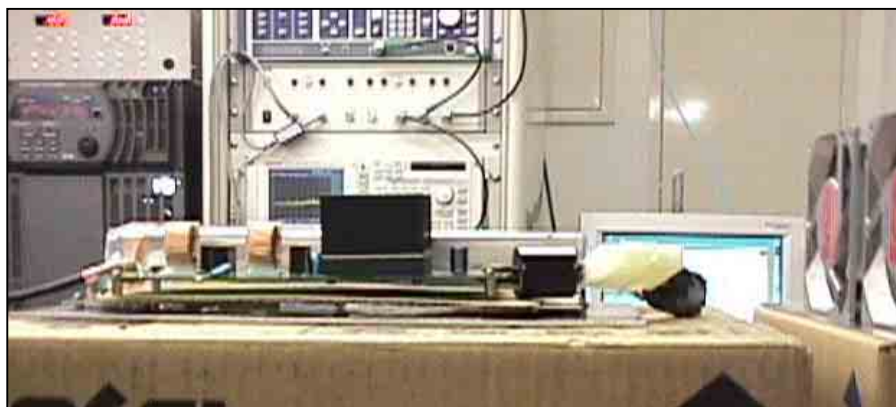
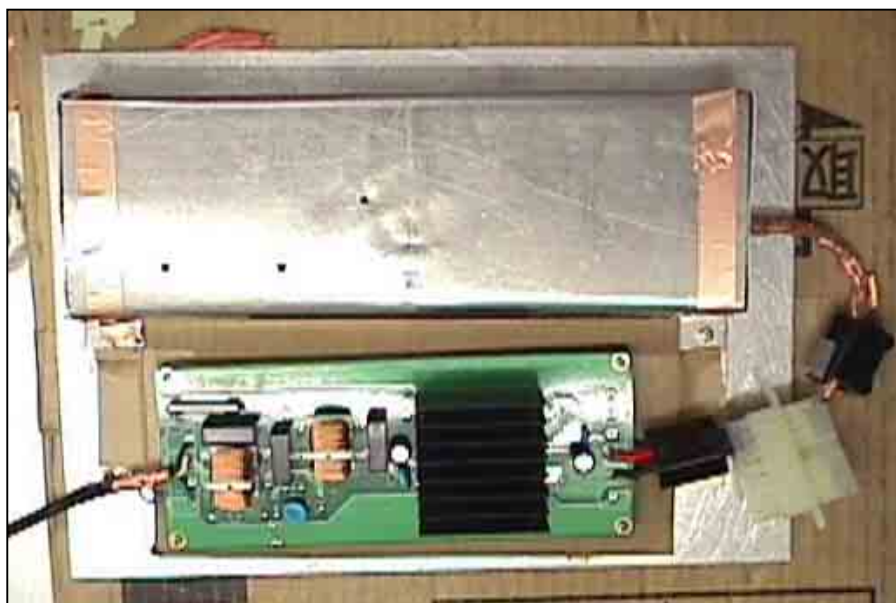
Frequency [MHz]	Meter Reading (QP) [dBμV]	Meter Reading (Ave.) [dBμV]	Factor [dB]	Level (QP) [dBμV]	Level (Ave.) [dBμV]	Line	Limit (QP) [dBμV]	Limit (Ave.) [dBμV]	Margin (QP)[dB]	Margin (Ave.) [dB]
0.3754	15.3	15.5	9.8	25.1	25.3	VA	58.4	48.4	33.3	23.1
1.1232	2.7	2.1	9.9	12.6	12.0	VA	56.0	46.0	43.4	34.0
2.9802	15.7	16.2	9.9	25.6	26.1	VA	56.0	46.0	30.4	19.9
22.7028	25.7	25.4	10.3	36.0	35.7	VA	60.0	50.0	24.0	14.3
0.3747	15.2	15.3	9.8	25.0	25.1	VB	58.4	48.4	33.4	23.3
1.1182	13.0	13.4	9.9	22.9	23.3	VB	56.0	46.0	33.1	22.7
2.9786	18.2	18.7	9.9	28.1	28.6	VB	56.0	46.0	27.9	17.4
22.6958	21.3	21.4	10.3	31.6	31.7	VB	60.0	50.0	28.4	18.3

# Conditions

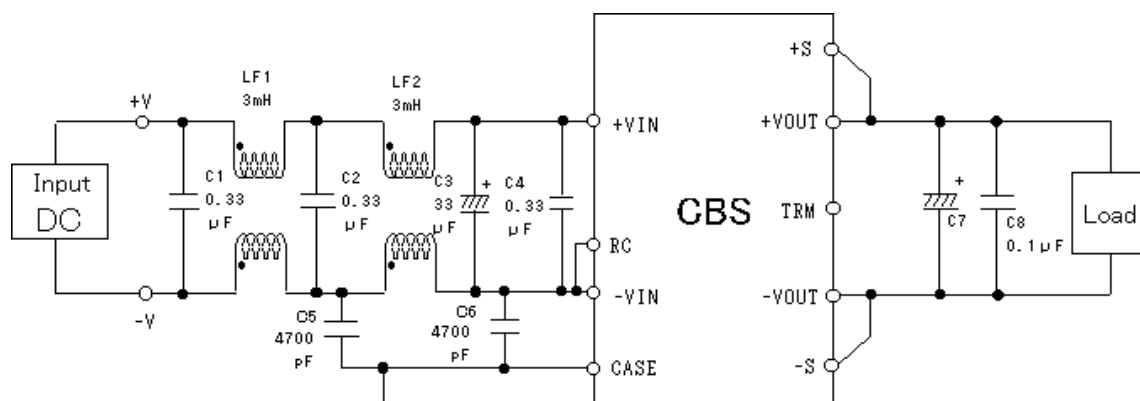
Date 2001/3/7

Test : LINE CONDUCTION  
Model Name : CBS20048

## Photographs of Test Set-Up



Testing circuitry



- L1, L2 : SC-05-30J (TOKIN)  
C1, C2, C4 : CFJC22E334M (Nitsuko)  
C3 : 100V 33 $\mu$ F PMseries (nichicon)  
C5, C6 : DE1307-640E472M-KH (MURATA)  
C7 : CBS2004803,05 10V 2200 $\mu$ F LXZseries (NIPPON CHEMI-CON)  
CBS2004812,15 25V 1000 $\mu$ F LXZseries (NIPPON CHEMI-CON)  
CBS2004824,28 35V 470 $\mu$ F LXZseries (NIPPON CHEMI-CON)  
C8 : MDD21H104M (Nitsuko)

Fig. Testing circuitry