



# RADIATED EMISSION

Model Name : CBS2004805

Model No. :

Serial No. :

Points : 3

Detector : PEAK/QP

Polarization : Hori. & Vert.

Limit: [EN 55022] Class B<3m>

Tested by : K.Kinoshita

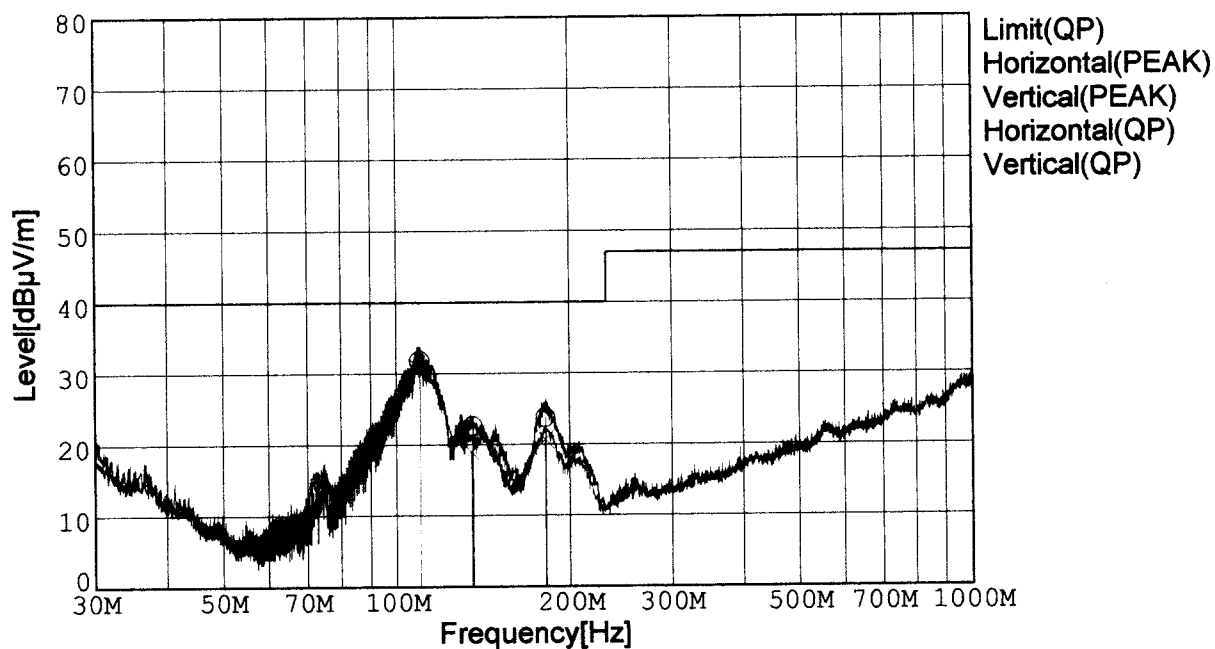
Temp. : 25degC

Humi. : 40%

Date : 2001/2/28 10:47

Test Equip. : R3132,ESPC

Comment : DC48V Io=30A



Frequency [MHz]	Meter Reading (QP) [dBμV]	Ant. Type	Antenna Factor [dB/m]	Cable & Preamp [dB]	Level (QP) [dBμV/m]	Angle[°]	Height [cm]	Polar.	Limit [dBμV/m]	Margin [dB]
109.754	52.6	BL	10.7	-31.5	31.8	86	151	Hori.	40.0	8.2
135.668	43.0	BL	11.0	-31.4	22.6	107	160	Hori.	40.0	17.4
181.661	46.6	BL	8.4	-31.2	23.8	141	159	Hori.	40.0	16.2
109.769	51.4	BL	10.7	-31.5	30.6	324	157	Vert.	40.0	9.4
134.860	39.3	BL	11.0	-31.4	18.9	318	138	Vert.	40.0	21.1
181.254	43.5	BL	8.4	-31.2	20.7	322	140	Vert.	40.0	19.3

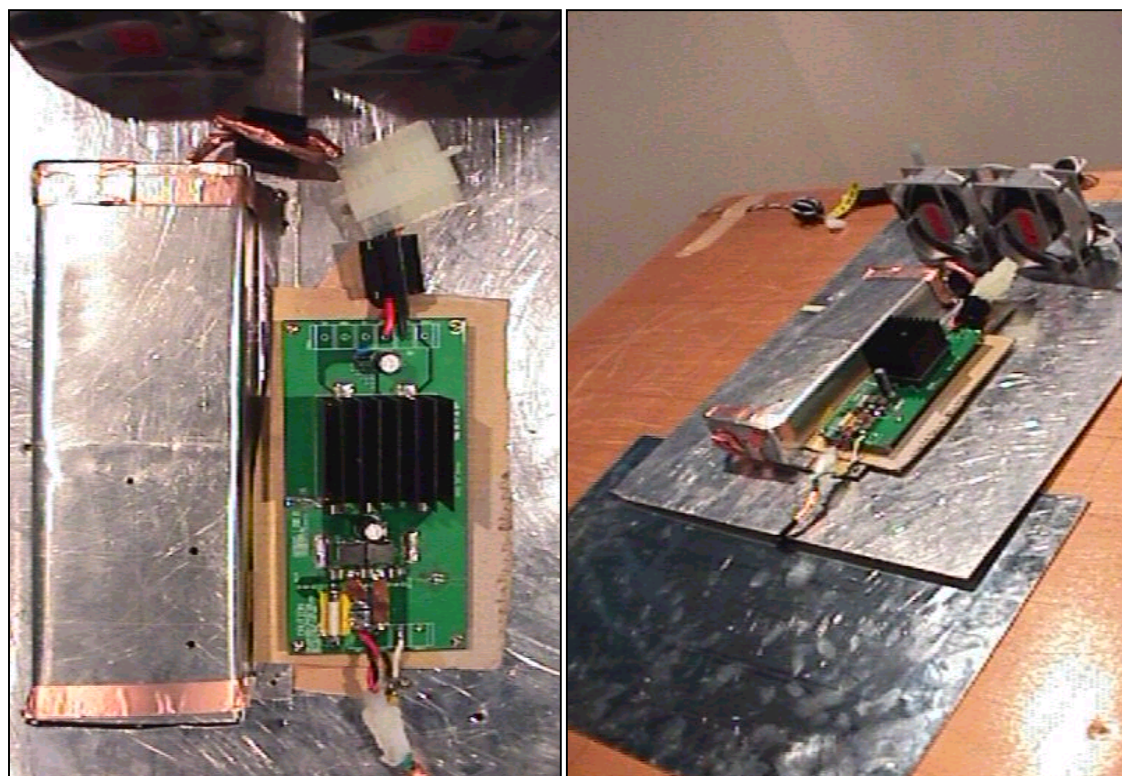
BL: Biconi-Log

## Conditions

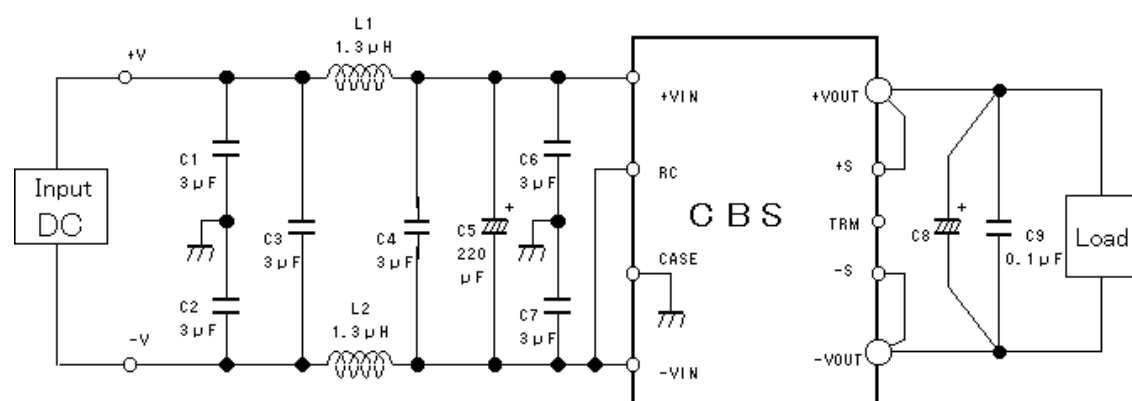
Date 2001/3/7

Test : RADIATED EMISSION  
 Model Name : CBS20048

## ○Photographs of Test Set-Up



## ○Testing circuitry



L1, L2 : ETQP6F1R3LFA (MATSUSHITA)  
 C1, C2, C3, C4, C6, C7 : CY55Y5P2A305M(TOKIN)  
 C5 : 80V 220 μF PFseries (nichicon)  
 C8 : CBS2004805 10V 2200 μF LXZseries (NIPPON CHEMI-CON)  
       CBS2004812 25V 1000 μF LXZseries (NIPPON CHEMI-CON)  
       CBS2004828 35V 470 μF LXZseries (NIPPON CHEMI-CON)  
 C9 : MDD21H104M (Nitsuko)

Fig. Testing circuitry

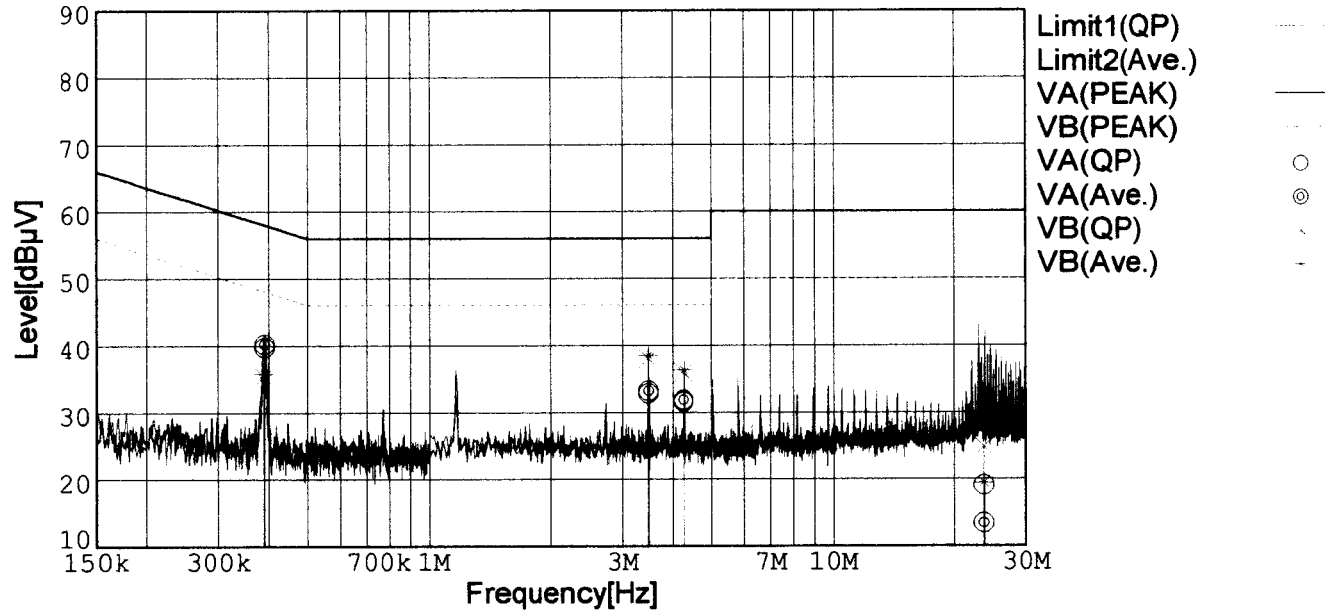


# LINE CONDUCTION

Model Name : CBS2004805  
 Model No. :  
 Serial No. :  
 Points : 4  
 Detector : PEAK/QP/Ave.  
 Line Mode : VA/VB

Tested by : K.Kinoshita  
 Temp. : 25degC  
 Humi. : 40%  
 Date : 2001/2/28 11:16  
 Test Equip. : R3132,ESPC  
 Comment : DC48V Io=30A

Limit1: [EN 55022] Class B(QP)  
 Limit2: [EN 55022] Class B(Ave.)



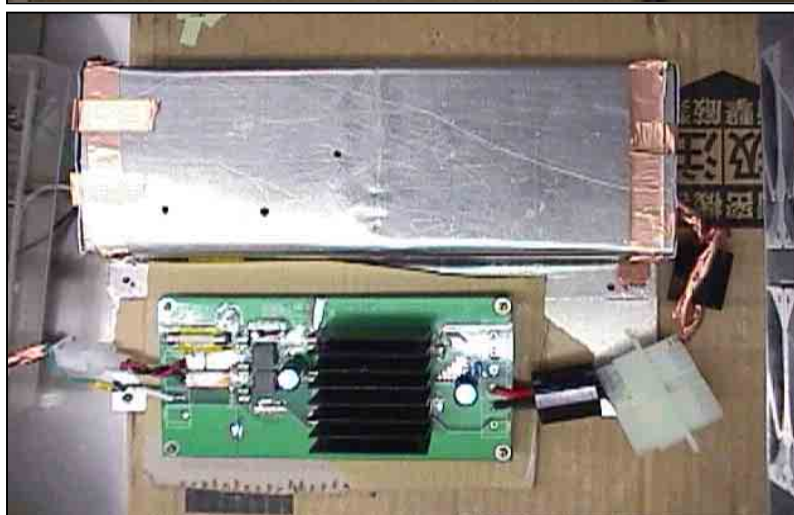
Frequency [MHz]	Meter Reading (QP) [dBμV]	Meter Reading (Ave.) [dBμV]	Factor [dB]	Level (QP) [dBμV]	Level (Ave.) [dBμV]	Line	Limit (QP) [dBμV]	Limit (Ave.) [dBμV]	Margin (QP)[dB]	Margin (Ave.) [dB]
0.3901	29.9	30.4	9.8	39.7	40.2	VA	58.1	48.1	18.4	7.9
3.4919	22.9	23.3	9.9	32.8	33.2	VA	56.0	46.0	23.2	12.8
4.2562	21.5	21.8	10.0	31.5	31.8	VA	56.0	46.0	24.5	14.2
23.5843	8.7	3.1	10.3	19.0	13.4	VA	60.0	50.0	41.0	36.6
0.3888	25.6	26.0	9.8	35.4	35.8	VB	58.1	48.1	22.7	12.3
3.4868	28.1	28.6	9.9	38.0	38.5	VB	56.0	46.0	18.0	7.5
4.2519	25.9	26.4	10.0	35.9	36.4	VB	56.0	46.0	20.1	9.6
23.5591	14.5	9.1	10.3	24.8	19.4	VB	60.0	50.0	35.2	30.6

# Conditions

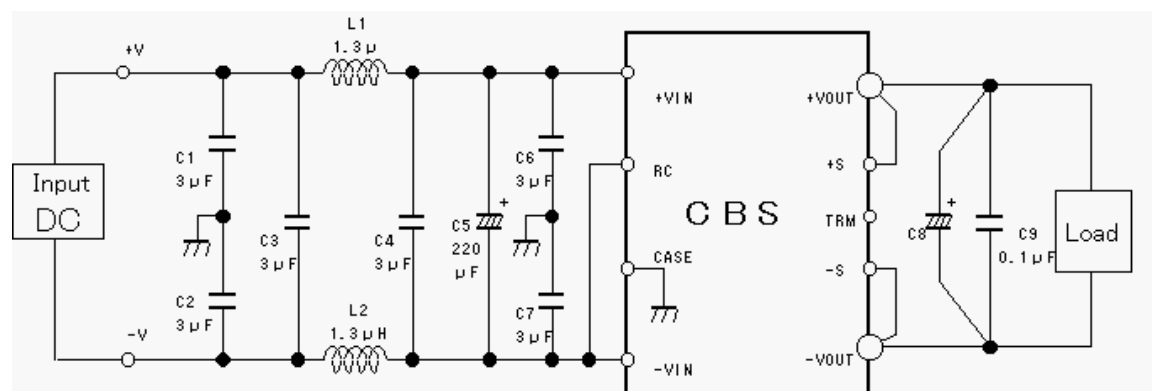
Date 2001/3/7

Test : LINE CONDUCTION  
Model Name : CBS20048

## Photographs of Test Set-Up



## Testing circuitry



L1, L2 : ETQP6F1R3LFA (MATSUSHITA)  
C1, C2, C3, C4, C6, C7 : CY55Y5P2A305M(TOKIN)  
C5 : 80V 220 $\mu$ F PFseries (nichicon)  
C8 : CBS2004805 10V 2200 $\mu$ F LXZseries (NIPPON CHEMI-CON)  
CBS2004812 25V 1000 $\mu$ F LXZseries (NIPPON CHEMI-CON)  
CBS2004828 35V 470 $\mu$ F LXZseries (NIPPON CHEMI-CON)  
C9 : MDD21H104M (Nitsuko)

Fig. Testing circuitry