



RADIATED EMISSION

Model Name : CBS2004805

Model No. :

Serial No. :

Points : 4

Detector : PEAK/QP

Polarization : Hori. & Vert.

Limit: [EN 55022] Class B<3m>

Tested by : K.Kinoshita

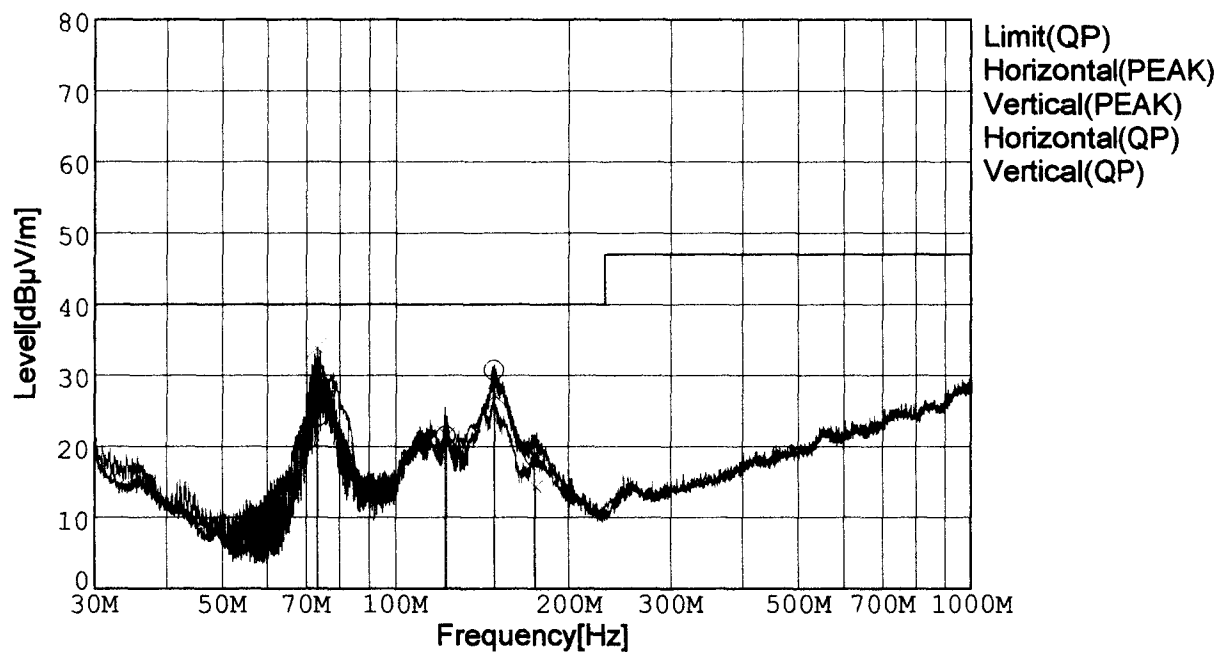
Temp. : 25degC

Humi. : 40%

Date : 2001/3/2 16:43

Test Equip. : R3132,ESPC

Comment : DC48V Io=30A



| Frequency [MHz] | Meter Reading (QP) [dBμV] | Ant. Type | Antenna Factor [dB/m] | Cable & Preamp [dB] | Level (QP) [dBμV/m] | Angle[°] | Height [cm] | Polar. | Limit [dBμV/m] | Margin [dB] |
|-----------------|---------------------------|-----------|-----------------------|---------------------|---------------------|----------|-------------|--------|----------------|-------------|
| 73.312 | 49.8 | BL | 6.1 | -31.7 | 24.2 | 271 | 158 | Hori. | 40.0 | 15.8 |
| 122.245 | 41.9 | BL | 11.0 | -31.5 | 21.4 | 71 | 145 | Hori. | 40.0 | 18.6 |
| 148.402 | 51.6 | BL | 10.6 | -31.4 | 30.8 | 80 | 158 | Hori. | 40.0 | 9.2 |
| 174.263 | 41.3 | BL | 8.6 | -31.3 | 18.6 | 68 | 158 | Hori. | 40.0 | 21.4 |
| 73.046 | 59.6 | BL | 6.0 | -31.7 | 33.9 | 188 | 101 | Vert. | 40.0 | 6.1 |
| 122.894 | 42.1 | BL | 11.0 | -31.5 | 21.6 | 169 | 146 | Vert. | 40.0 | 18.4 |
| 148.781 | 48.0 | BL | 10.6 | -31.4 | 27.2 | 323 | 159 | Vert. | 40.0 | 12.8 |
| 175.084 | 37.0 | BL | 8.6 | -31.3 | 14.3 | 354 | 157 | Vert. | 40.0 | 25.7 |

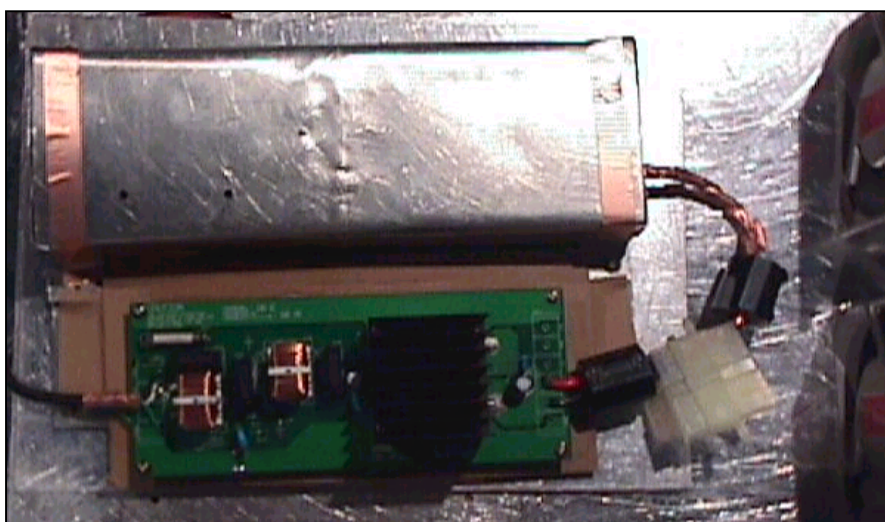
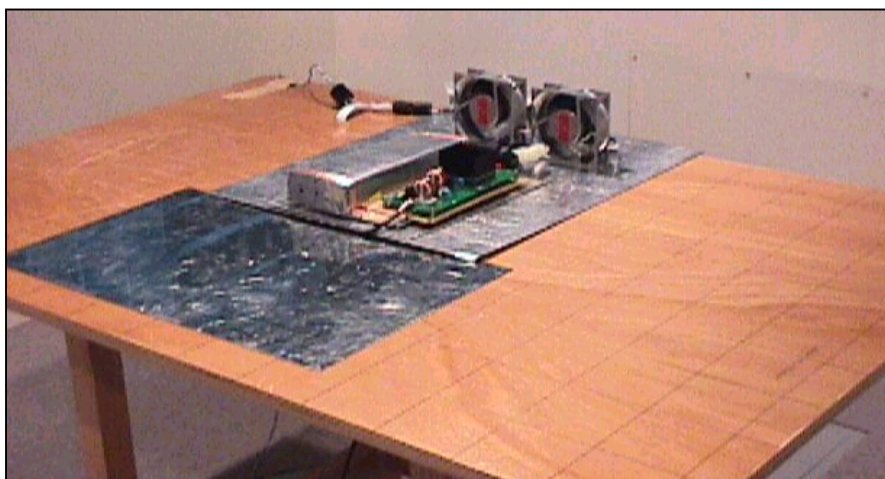
BL: Biconi-Log

Conditions

Date 2001/3/7

Test : RADIATED EMISSION
 Model Name : CBS20048

○Photographs of Test Set-Up



○Testing circuitry

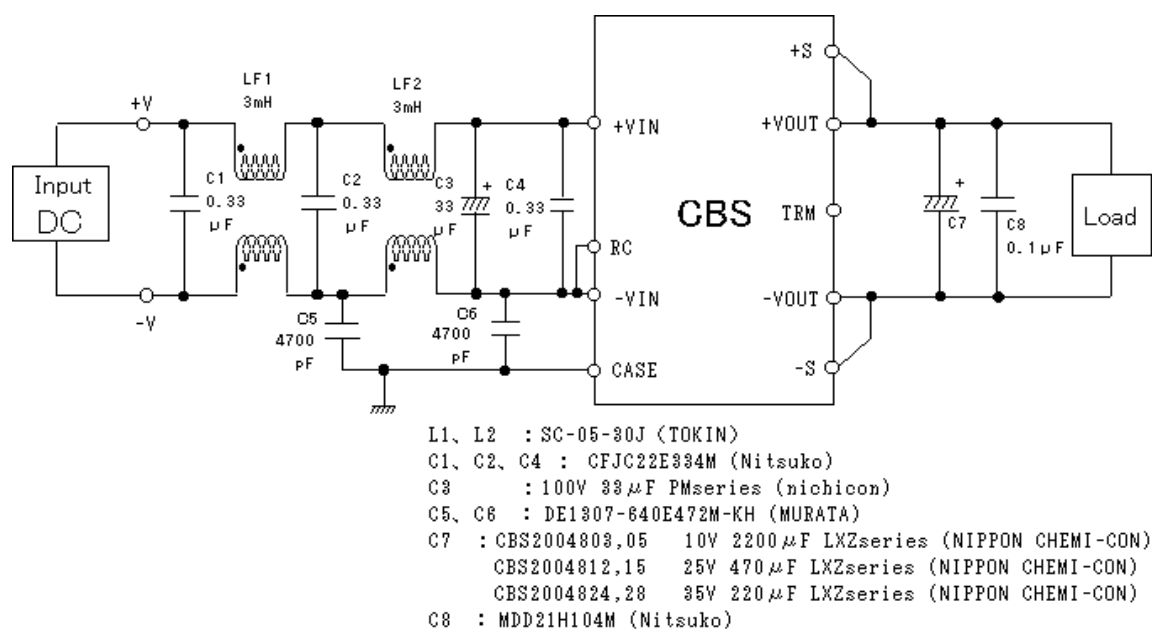


Fig. Testing circuitry



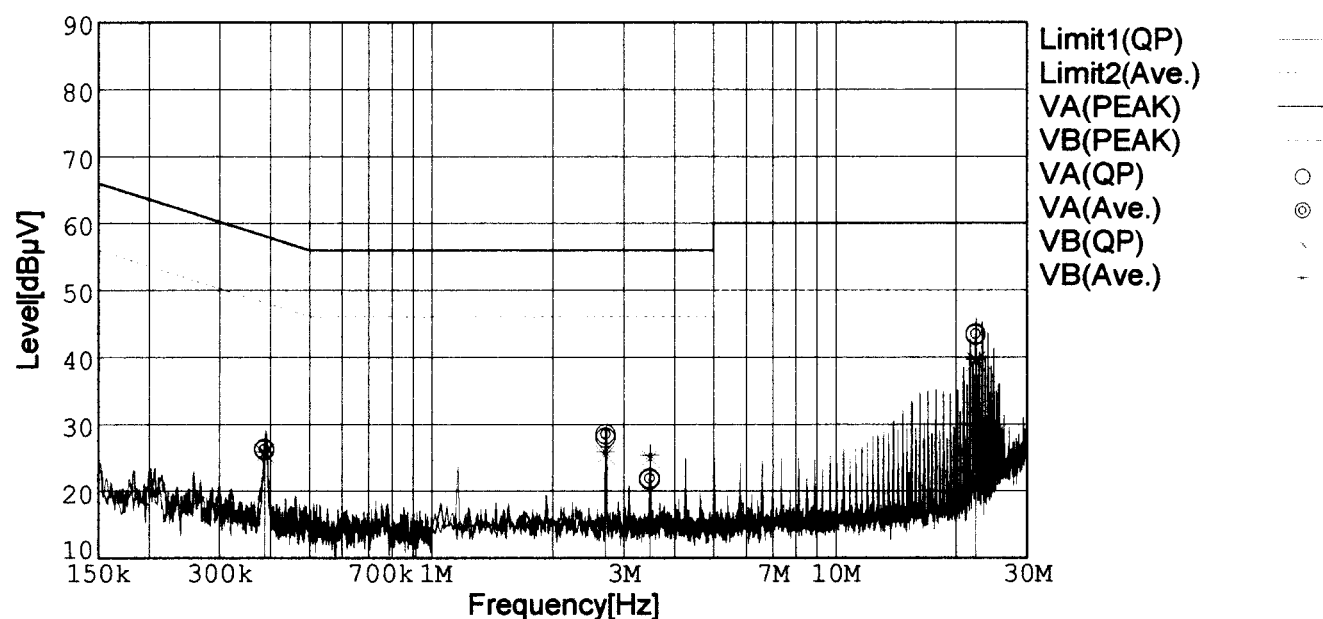
LINE CONDUCTION

Model Name : CBS2004805
 Model No. :
 Serial No. :
 Points : 4
 Detector : PEAK/QP/Ave.
 Line Mode : VA/VB

Tested by : K.Kinoshita
 Temp. : 25degC
 Humi. : 40%
 Date : 2001/3/2 20:10
 Test Equip. : R3132,ESPC
 Comment : DC48V Io=30A

Limit1: [EN 55022] Class B(QP)

Limit2: [EN 55022] Class B(Ave.)



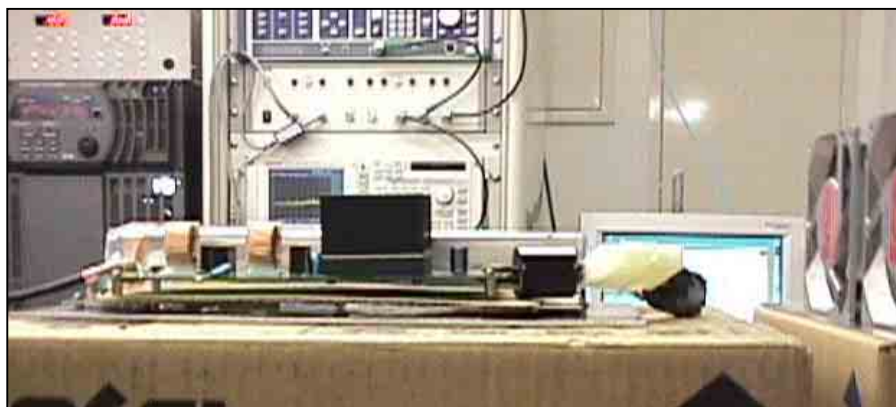
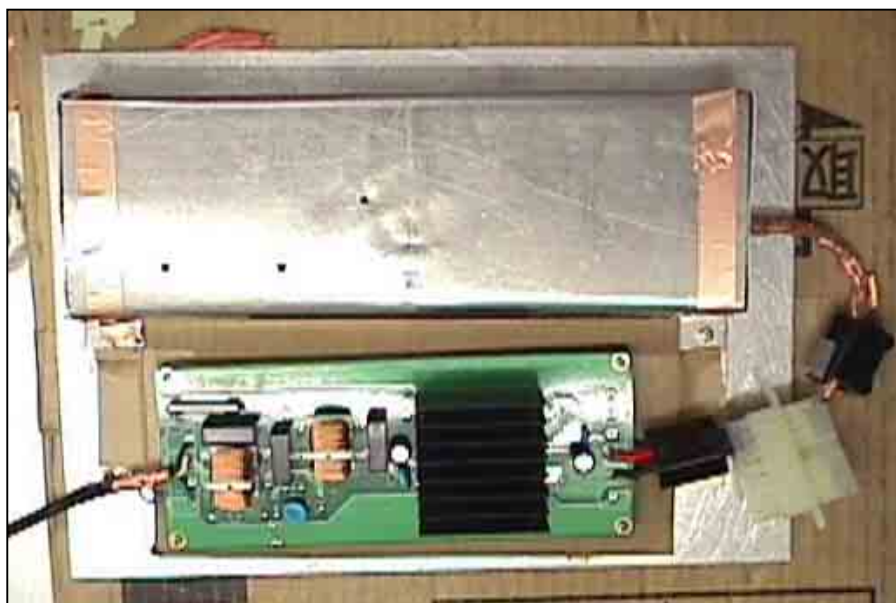
| Frequency [MHz] | Meter Reading (QP) [dBμV] | Meter Reading (Ave.) [dBμV] | Factor [dB] | Level (QP) [dBμV] | Level (Ave.) [dBμV] | Line | Limit (QP) [dBμV] | Limit (Ave.) [dBμV] | Margin (QP)[dB] | Margin (Ave.) [dB] |
|-----------------|---------------------------|-----------------------------|-------------|-------------------|---------------------|------|-------------------|---------------------|-----------------|--------------------|
| 0.3857 | 16.3 | 16.5 | 9.8 | 26.1 | 26.3 | VA | 58.2 | 48.2 | 32.1 | 21.9 |
| 2.6983 | 18.1 | 18.6 | 9.9 | 28.0 | 28.5 | VA | 56.0 | 46.0 | 28.0 | 17.5 |
| 3.4685 | 11.8 | 12.0 | 9.9 | 21.7 | 21.9 | VA | 56.0 | 46.0 | 34.3 | 24.1 |
| 22.3495 | 33.0 | 33.1 | 10.3 | 43.3 | 43.4 | VA | 60.0 | 50.0 | 16.7 | 6.6 |
| 0.3862 | 15.9 | 16.1 | 9.8 | 25.7 | 25.9 | VB | 58.2 | 48.2 | 32.5 | 22.3 |
| 2.6969 | 15.5 | 15.9 | 9.9 | 25.4 | 25.8 | VB | 56.0 | 46.0 | 30.6 | 20.2 |
| 3.4683 | 15.0 | 15.4 | 9.9 | 24.9 | 25.3 | VB | 56.0 | 46.0 | 31.1 | 20.7 |
| 22.3469 | 29.0 | 29.4 | 10.3 | 39.3 | 39.7 | VB | 60.0 | 50.0 | 20.7 | 10.3 |

Conditions

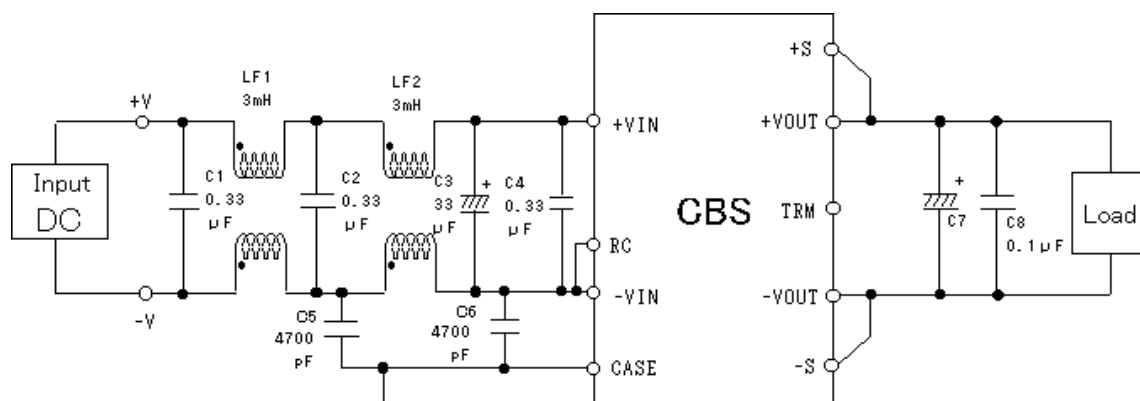
Date 2001/3/7

Test : LINE CONDUCTION
Model Name : CBS20048

Photographs of Test Set-Up



Testing circuitry



- L1, L2 : SC-05-30J (TOKIN)
C1, C2, C4 : CFJC22E334M (Nitsuko)
C3 : 100V 33 μ F PMseries (nichicon)
C5, C6 : DE1307-640E472M-KH (MURATA)
C7 : CBS2004803,05 10V 2200 μ F LXZseries (NIPPON CHEMI-CON)
CBS2004812,15 25V 1000 μ F LXZseries (NIPPON CHEMI-CON)
CBS2004824,28 35V 470 μ F LXZseries (NIPPON CHEMI-CON)
C8 : MDD21H104M (Nitsuko)

Fig. Testing circuitry