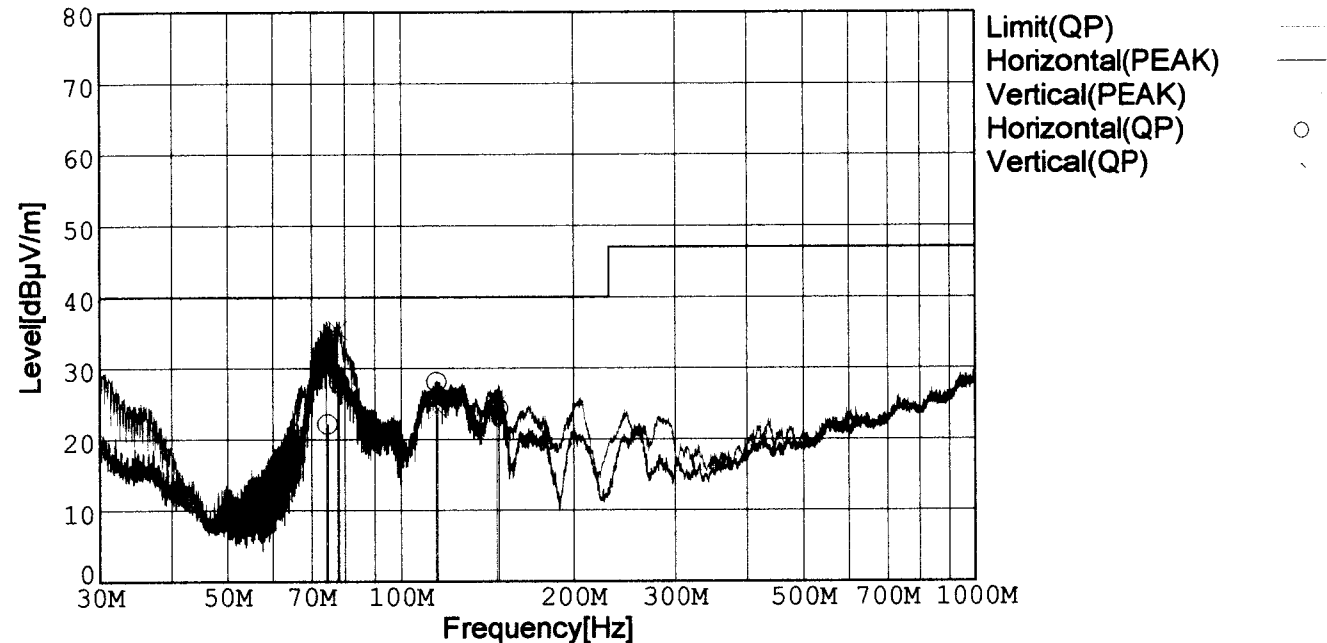




# RADIATED EMISSION

Model Name	: CBS2004815	Tested by	: K.Kinoshita
Model No.	:	Temp.	: 25degC
Serial No.	:	Humi.	: 40%
Points	: 4	Date	: 2001/3/5 19:04
Detector	: PEAK/QP	Test Equip.	: R3132,ESPC
Polarization	: Hori. & Vert.	Comment	: DC48V Io=13.4A

Limit: [EN 55022] Class B<3m>



Frequency [MHz]	Meter Reading (QP) [dBμV]	Ant. Type	Antenna Factor [dB/m]	Cable & Preamp [dB]	Level (QP) [dBμV/m]	Angle[°]	Height [cm]	Polar.	Limit [dBμV/m]	Margin [dB]
74.652	47.6	BL	6.3	-31.7	22.2	285	157	Hori.	40.0	17.8
78.181	52.9	BL	6.8	-31.7	28.0	270	156	Hori.	40.0	12.0
115.478	48.8	BL	10.8	-31.5	28.1	97	159	Hori.	40.0	11.9
147.761	44.9	BL	10.7	-31.4	24.2	293	157	Hori.	40.0	15.8
74.236	59.7	BL	6.2	-31.7	34.2	140	113	Vert.	40.0	5.8
77.637	60.3	BL	6.7	-31.7	35.3	170	131	Vert.	40.0	4.7
116.252	44.9	BL	10.9	-31.5	24.3	192	137	Vert.	40.0	15.7
146.575	45.6	BL	10.7	-31.4	24.9	327	155	Vert.	40.0	15.1

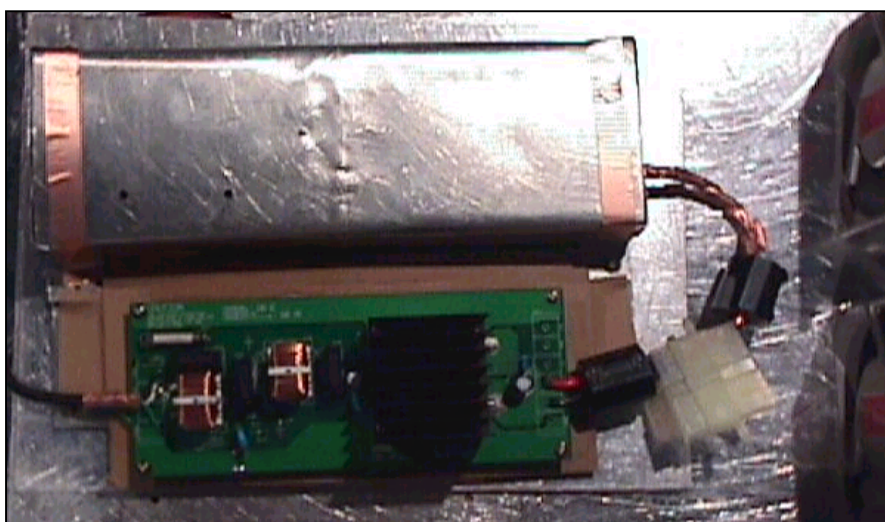
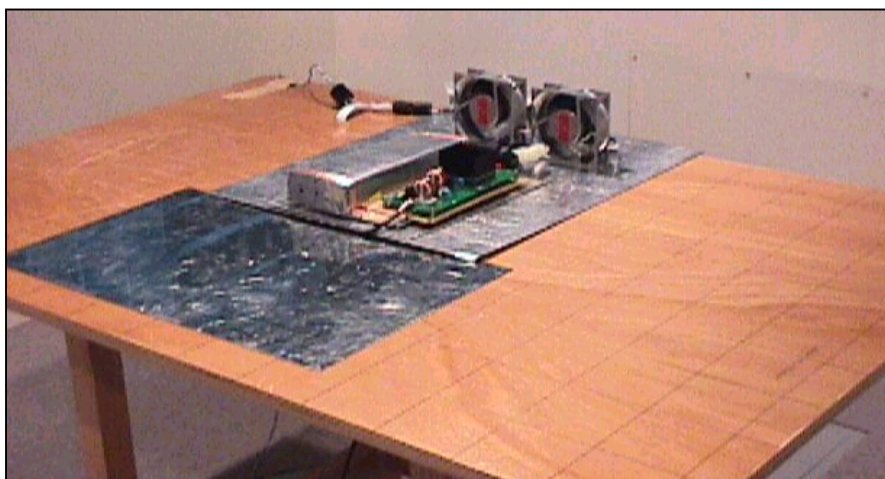
BL: Biconi-Log

## Conditions

Date 2001/3/7

Test : RADIATED EMISSION  
 Model Name : CBS20048

## ○Photographs of Test Set-Up



## ○Testing circuitry

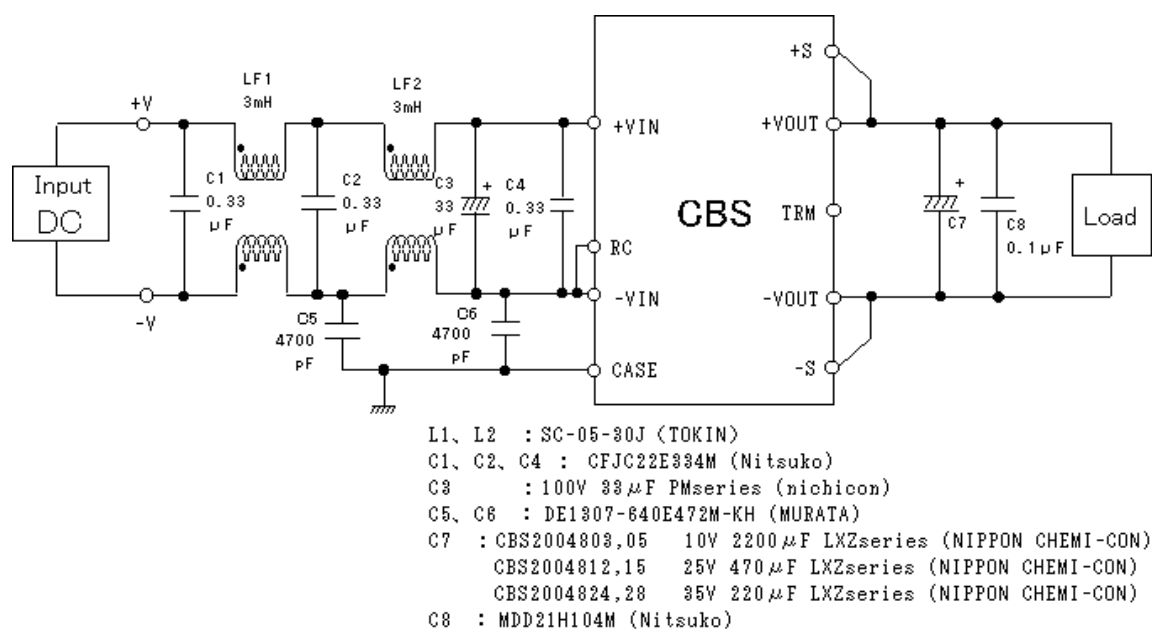


Fig. Testing circuitry



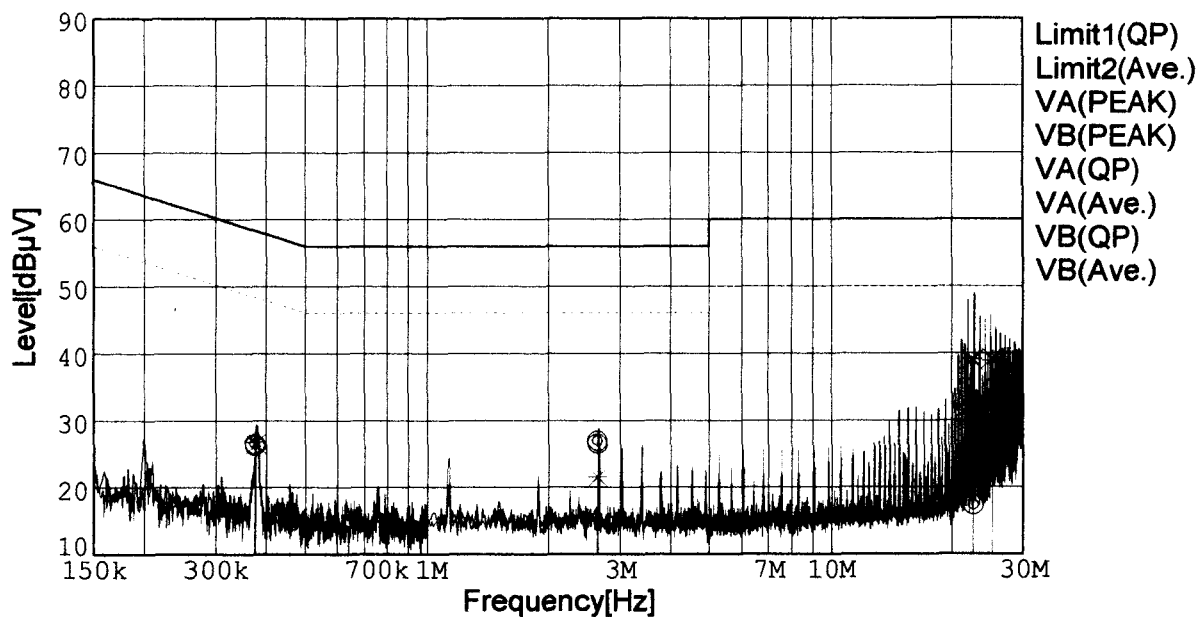
## LINE CONDUCTION

Model Name : CBS2004815  
 Model No. :  
 Serial No. :  
 Points : 4  
 Detector : PEAK/QP/Ave.  
 Line Mode : VA/VB

Tested by : K.Kinoshita  
 Temp. : 25degC  
 Humi. : 40%  
 Date : 2001/3/5 18:39  
 Test Equip. : R3132,ESPC  
 Comment : DC48V Io=13.4A

Limit1: [EN 55022] Class B(QP)

Limit2: [EN 55022] Class B(Ave.)



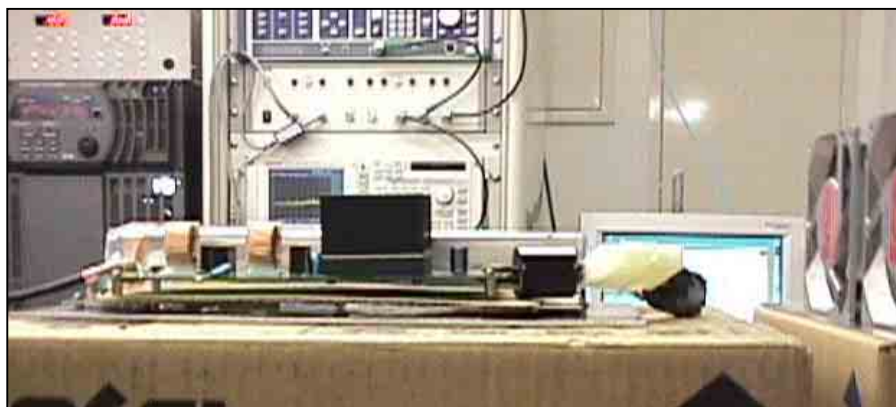
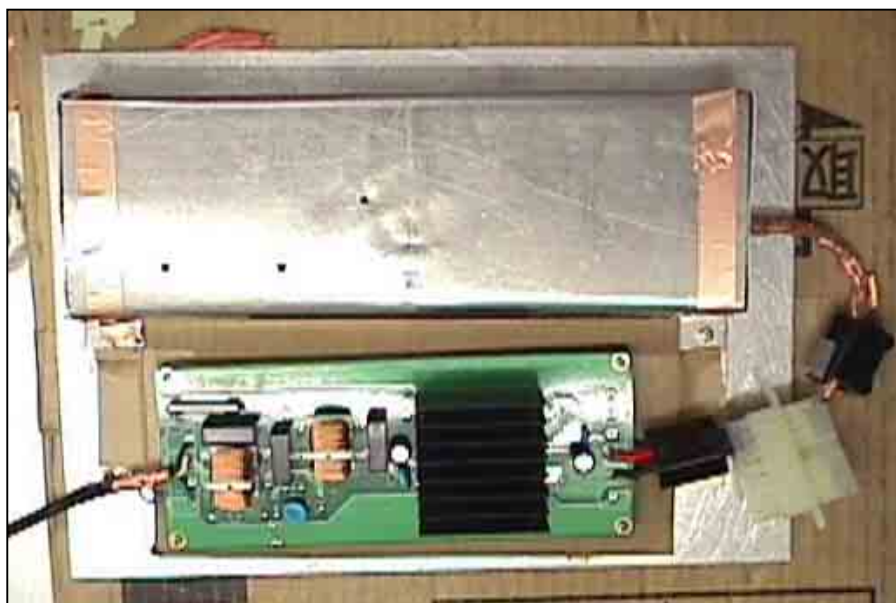
Frequency [MHz]	Meter Reading (QP) [dBμV]	Meter Reading (Ave.) [dBμV]	Factor [dB]	Level (QP) [dBμV]	Level (Ave.) [dBμV]	Line	Limit (QP) [dBμV]	Limit (Ave.) [dBμV]	Margin (QP)[dB]	Margin (Ave.) [dB]
0.3752	16.4	16.7	9.8	26.2	26.5	VA	58.4	48.4	32.2	21.9
2.6308	16.6	17.0	9.9	26.5	26.9	VA	56.0	46.0	29.5	19.1
22.4958	12.5	7.0	10.3	22.8	17.3	VA	60.0	50.0	37.2	32.7
25.0735	24.2	22.7	10.4	34.6	33.1	VA	60.0	50.0	25.4	16.9
0.3768	16.7	17.0	9.8	26.5	26.8	VB	58.4	48.4	31.9	21.6
2.6266	11.6	11.6	9.9	21.5	21.5	VB	56.0	46.0	34.5	24.5
22.4578	28.6	28.8	10.3	38.9	39.1	VB	60.0	50.0	21.1	10.9
25.0668	28.8	28.5	10.4	39.2	38.9	VB	60.0	50.0	20.8	11.1

# Conditions

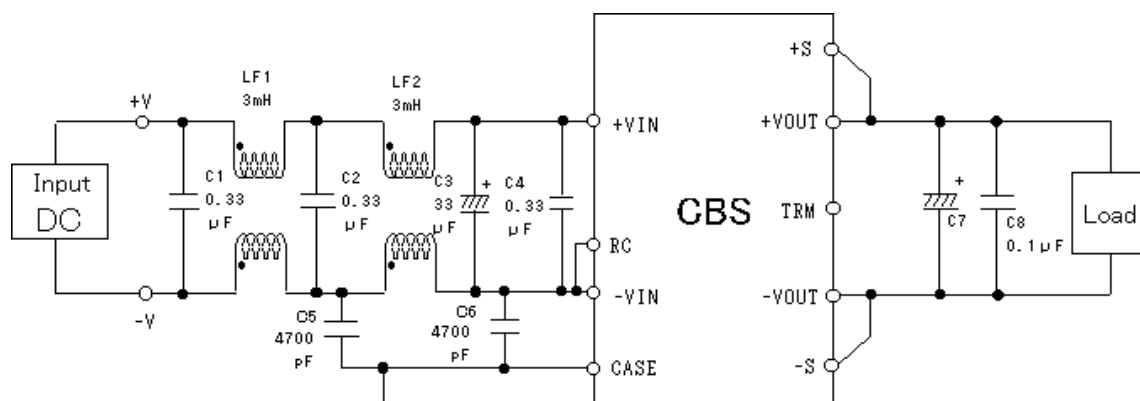
Date 2001/3/7

Test : LINE CONDUCTION  
Model Name : CBS20048

Photographs of Test Set-Up



Testing circuitry



- L1, L2 : SC-05-30J (TOKIN)  
C1, C2, C4 : CFJC22E334M (Nitsuko)  
C3 : 100V 33  $\mu$ F PMseries (nichicon)  
C5, C6 : DE1307-640E472M-KH (MURATA)  
C7 : CBS2004803,05 10V 2200  $\mu$ F LXZseries (NIPPON CHEMI-CON)  
CBS2004812,15 25V 1000  $\mu$ F LXZseries (NIPPON CHEMI-CON)  
CBS2004824,28 35V 470  $\mu$ F LXZseries (NIPPON CHEMI-CON)  
C8 : MDD21H104M (Nitsuko)

Fig. Testing circuitry