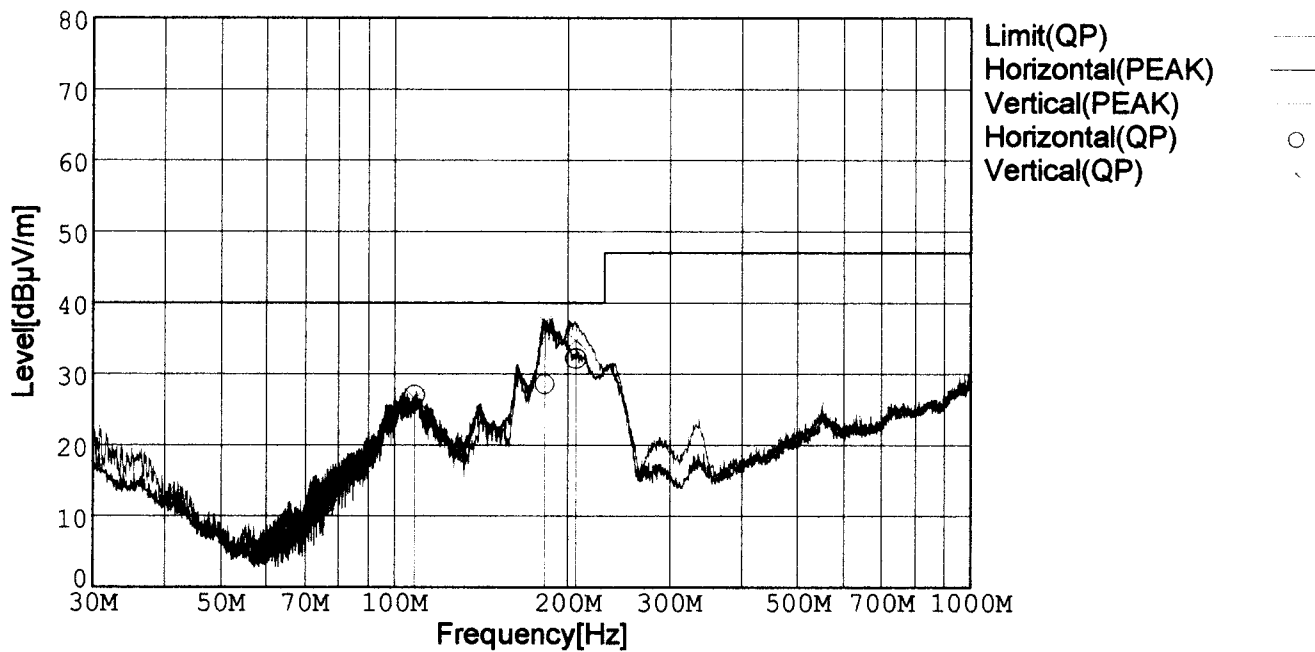


RADIATED EMISSION

Model Name : CBS2004828
 Model No. :
 Serial No. :
 Points : 3
 Detector : PEAK/QP
 Polarization : Hori. & Vert.

Tested by : K.Kinoshita
 Temp. : 25degC
 Humi. : 40%
 Date : 2001/2/28 0:35
 Test Equip. : R3132,ESPC
 Comment : DC48V Io=7.2A

Limit: [EN 55022] Class B<3m>



Frequency [MHz]	Meter Reading (QP) [dBμV]	Ant. Type	Antenna Factor [dB/m]	Cable & Preamp [dB]	Level (QP) [dBμV/m]	Angle[°]	Height [cm]	Polar.	Limit [dBμV/m]	Margin [dB]
108.206	48.0	BL	10.5	-31.5	27.0	86	153	Hori.	40.0	13.0
182.422	51.4	BL	8.4	-31.2	28.6	303	153	Hori.	40.0	11.4
206.080	54.7	BL	8.6	-31.1	32.2	300	158	Hori.	40.0	7.8
108.162	47.5	BL	10.5	-31.5	26.5	345	154	Vert.	40.0	13.5
182.631	60.0	BL	8.4	-31.2	37.2	148	118	Vert.	40.0	2.8
205.907	57.2	BL	8.6	-31.1	34.7	177	102	Vert.	40.0	5.3

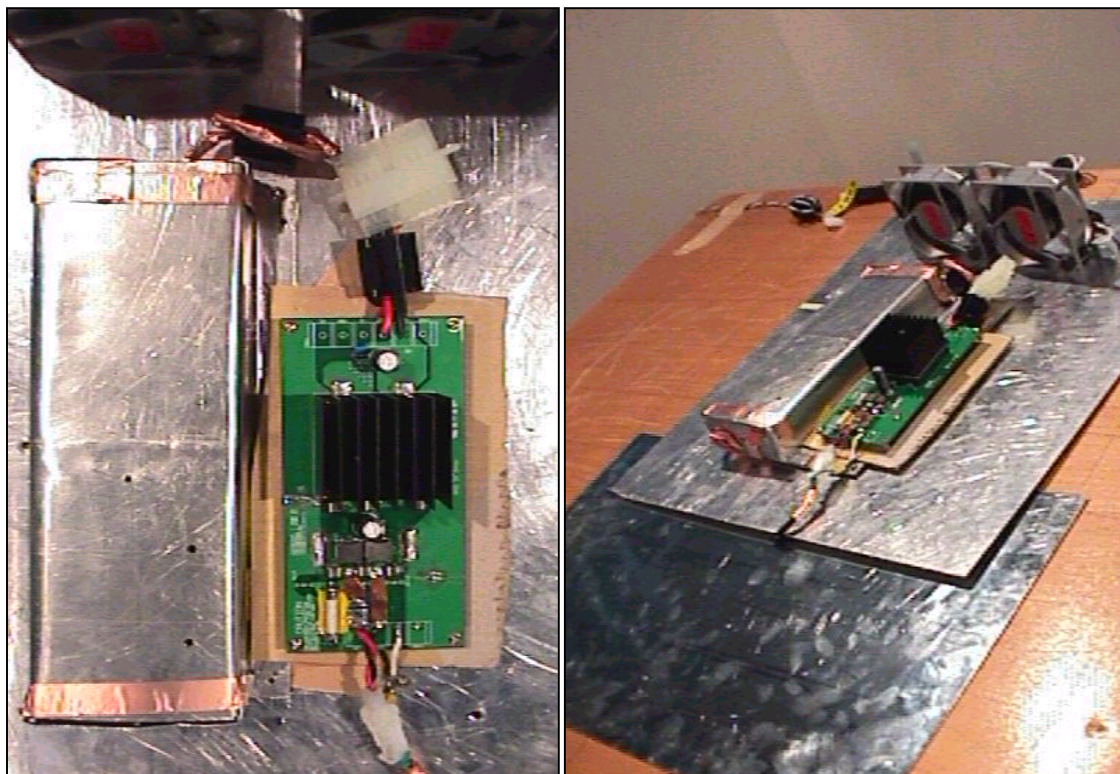
BL: Biconi-Log

Conditions

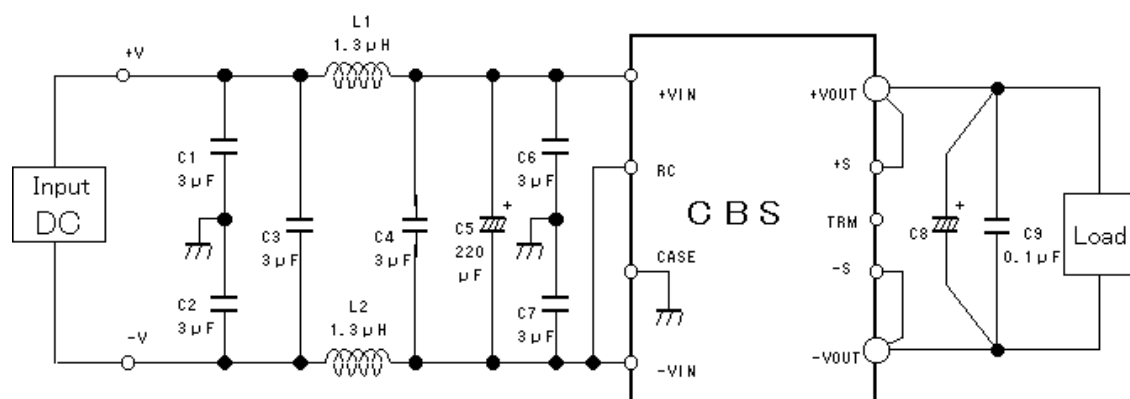
Date 2001/3/7

Test : RADIATED EMISSION
 Model Name : CBS20048

○Photographs of Test Set-Up



○Testing circuitry



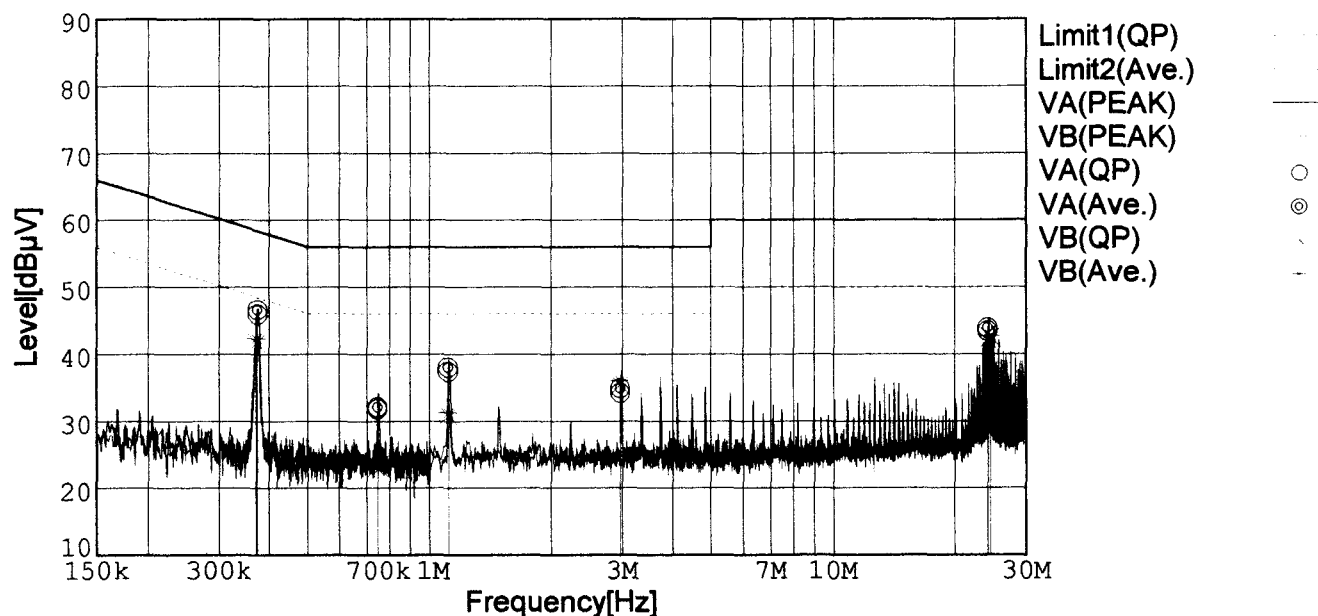
L1, L2 : ETQP6F1R3LFA (MATSUSHITA)
 C1, C2, C3, C4, C6, C7 : CY55Y5P2A305M(TOKIN)
 C5 : 80V 220 μ F PFseries (nichicon)
 C8 : CBS2004805 10V 2200 μ F LXZseries (NIPPON CHEMI-CON)
 CBS2004812 25V 1000 μ F LXZseries (NIPPON CHEMI-CON)
 CBS2004828 35V 470 μ F LXZseries (NIPPON CHEMI-CON)
 C9 : MDD21H104M (Nitsuko)

Fig. Testing circuitry

LINE CONDUCTION

Model Name : CBS2004828
 Model No. :
 Serial No. :
 Points : 5
 Detector : PEAK/QP/Ave.
 Line Mode : VA/VB
 Limit1: [EN 55022] Class B(QP)
 Limit2: [EN 55022] Class B(Ave.)

Tested by : K.Kinoshita
 Temp. : 25degC
 Humi. : 40%
 Date : 2001/2/27 23:04
 Test Equip. : R3132.ESPC
 Comment : DC48V Io=7.2A



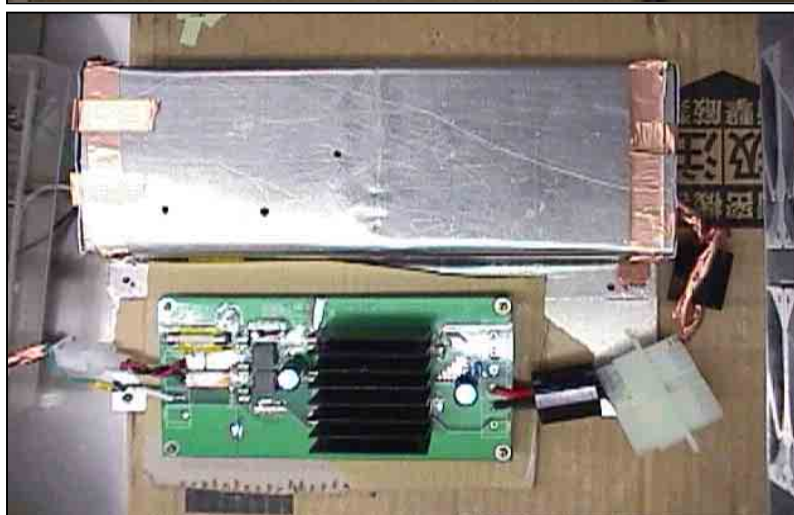
Frequency [MHz]	Meter Reading (QP) [dBμV]	Meter Reading (Ave.) [dBμV]	Factor [dB]	Level (QP) [dBμV]	Level (Ave.) [dBμV]	Line	Limit (QP) [dBμV]	Limit (Ave.) [dBμV]	Margin (QP) [dB]	Margin (Ave.) [dB]
0.3736	36.1	36.8	9.8	45.9	46.6	VA	58.4	48.4	12.5	1.8
0.7443	21.9	22.2	9.9	31.8	32.1	VA	56.0	46.0	24.2	13.9
1.1132	27.4	28.1	9.9	37.3	38.0	VA	56.0	46.0	18.7	8.0
2.9665	24.3	24.9	9.9	34.2	34.8	VA	56.0	46.0	21.8	11.2
24.0878	33.1	33.6	10.3	43.4	43.9	VA	60.0	50.0	16.6	6.1
0.3718	31.9	32.5	9.8	41.7	42.3	VB	58.5	48.5	16.8	6.2
0.7441	13.4	12.9	9.9	23.3	22.8	VB	56.0	46.0	32.7	23.2
1.1121	20.9	21.3	9.9	30.8	31.2	VB	56.0	46.0	25.2	14.8
2.9649	25.5	26.1	9.9	35.4	36.0	VB	56.0	46.0	20.6	10.0
24.4542	32.2	32.4	10.3	42.5	42.7	VB	60.0	50.0	17.5	7.3

Conditions

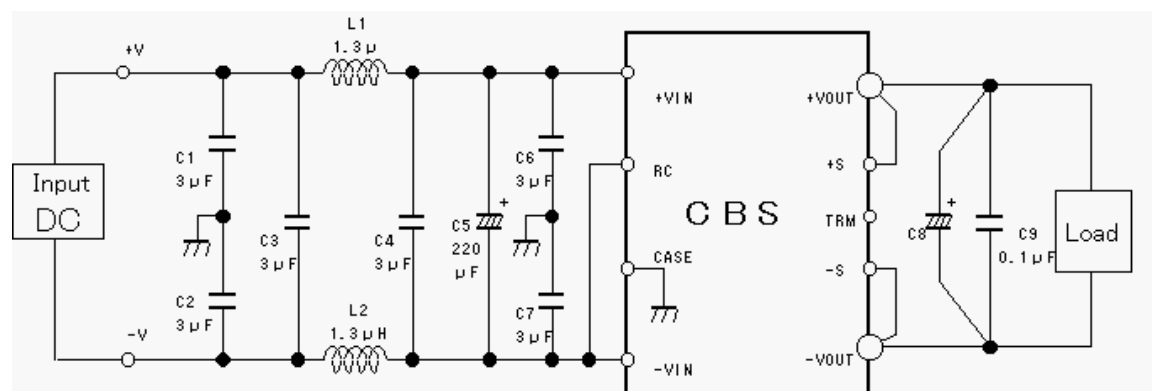
Date 2001/3/7

Test : LINE CONDUCTION
Model Name : CBS20048

Photographs of Test Set-Up



Testing circuitry



L1, L2 : ETQP6F1R3LFA (MATSUSHITA)
C1, C2, C3, C4, C6, C7 : CY55Y5P2A305M(TOKIN)
C5 : 80V 220 μ F PFseries (nichicon)
C8 : CBS2004805 10V 2200 μ F LXZseries (NIPPON CHEMI-CON)
CBS2004812 25V 1000 μ F LXZseries (NIPPON CHEMI-CON)
CBS2004828 35V 470 μ F LXZseries (NIPPON CHEMI-CON)
C9 : MDD21H104M (Nitsuko)

Fig. Testing circuitry