



RADIATED EMISSION

Model Name : CBS502415

Model No. :

Serial No. :

Points : 3

Detector : PEAK/QP

Polarization : Hori. & Vert.

Limit: [EN 55022] Class B<3m>

Tested by : T.Oiwake

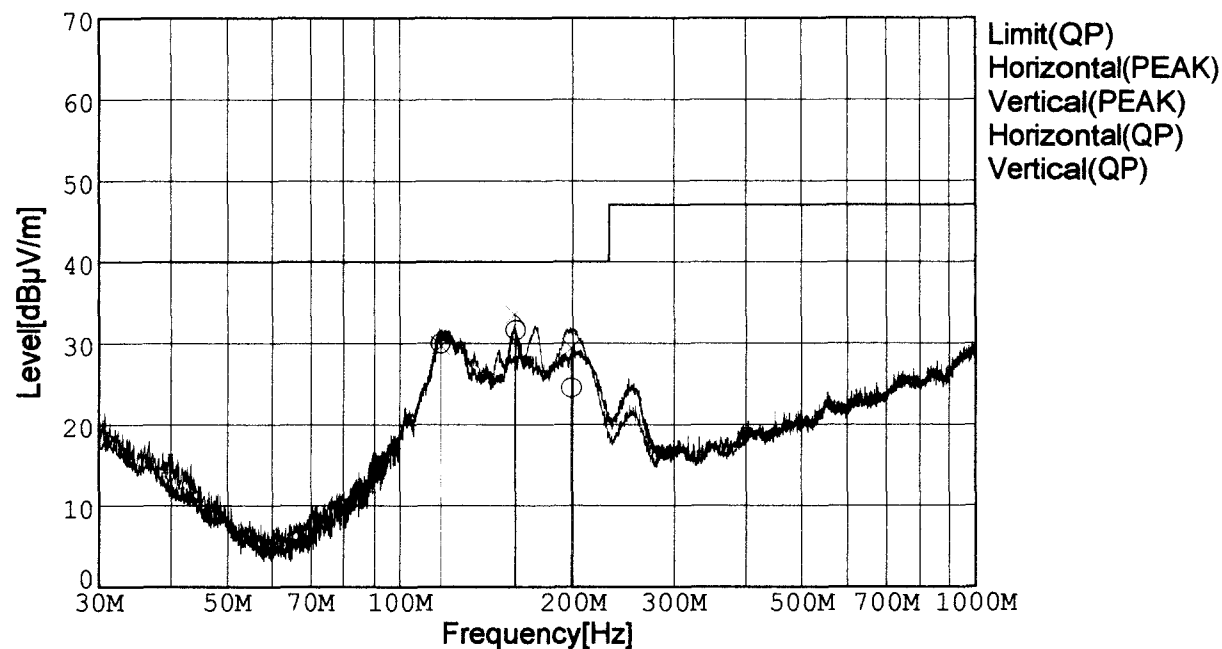
Temp. : 25degC

Humi. : 40%

Date : 2002/7/12 18:26

Test Equip. : R3132,ESPC

Comment : DC 24V, 3.4A



Frequency [MHz]	Meter Reading (QP) [dBμV]	Ant. Type	Antenna Factor [dB/m]	Cable & Preamp [dB]	Level (QP) [dBμV/m]	Angle[°]	Height [cm]	Polar.	Limit [dBμV/m]	Margin [dB]
117.635	50.5	BL	10.9	-31.5	29.9	65	152	Hori.	40.0	10.1
158.626	52.9	BL	10.0	-31.3	31.6	324	157	Hori.	40.0	8.4
198.895	47.2	BL	8.5	-31.2	24.5	344	153	Hori.	40.0	15.5
117.550	50.3	BL	10.9	-31.5	29.7	319	154	Vert.	40.0	10.3
158.021	54.9	BL	10.0	-31.3	33.6	320	149	Vert.	40.0	6.4
198.717	52.1	BL	8.5	-31.2	29.4	268	133	Vert.	40.0	10.6

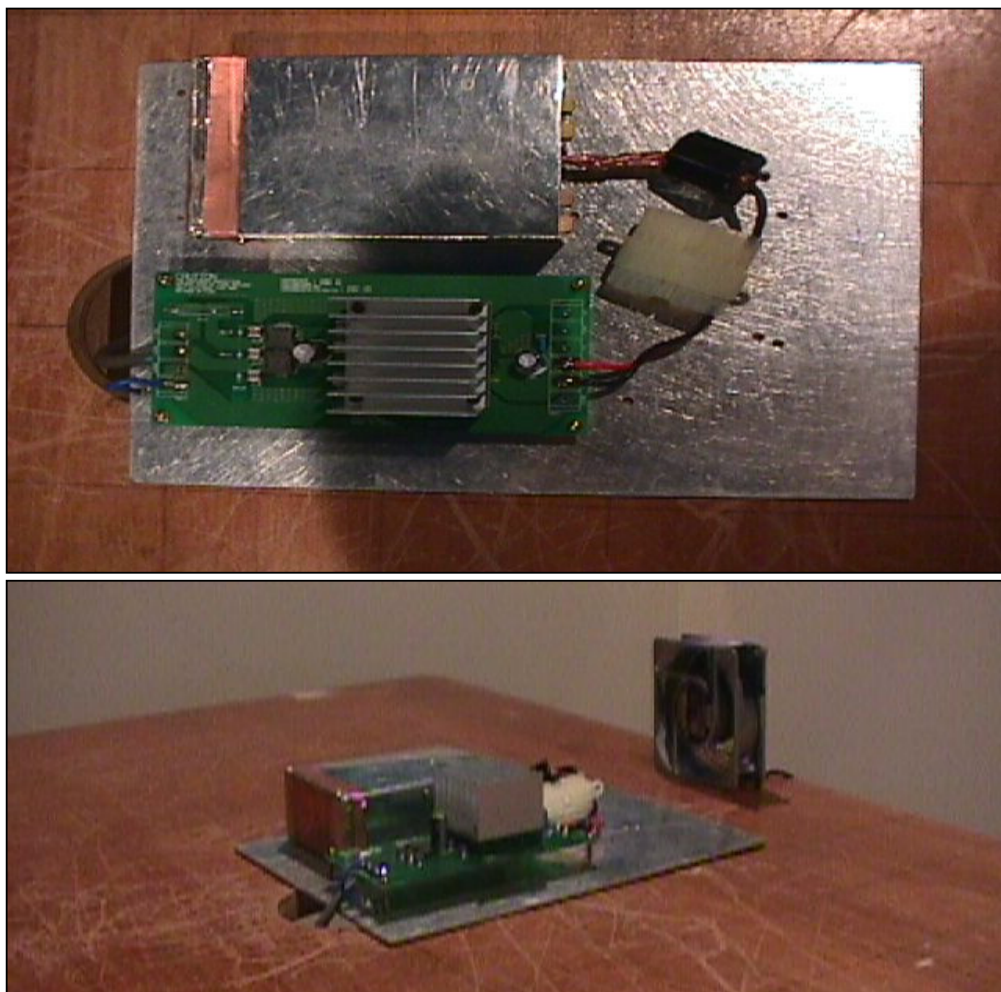
BL: Biconi-Log

Conditions

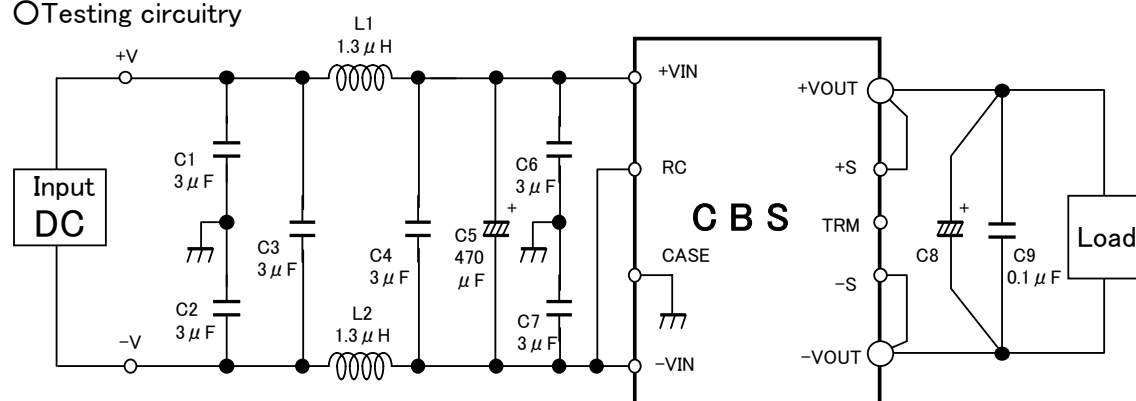
Date 2002/7/19

Test : RADIATED EMISSION
 Model Name : CBS502403/15/24

○Photographs of Test Set-Up



○Testing circuitry



L1、L2 : ETQP6F1R3LFA(MATSUSHITA)
 C1、C2、C3、
 C4、C6、C7 : CY55Y5P2A305M(TOKIN)
 C5 : 50V 470 μ F PMseries (nichicon)
 C8 : CBS502403 10V 2200 μ F LXZseries (NIPPON CHEMI-CON)
 CBS502415 25V 470 μ F LXZseries (NIPPON CHEMI-CON)
 CBS502424 35V 220 μ F LXZseries (NIPPON CHEMI-CON)
 C9 : MDD21H104M (Nitsuko)

Fig. Testing circuitry



LINE CONDUCTION

Model Name : CBS502415

Model No. :

Serial No. :

Points : 3

Detector : PEAK/QP/Ave.

Line Mode : VA/VB

Limit1: [EN 55022] Class B(QP)

Limit2: [EN 55022] Class B(Ave.)

Tested by : T.Oiwake

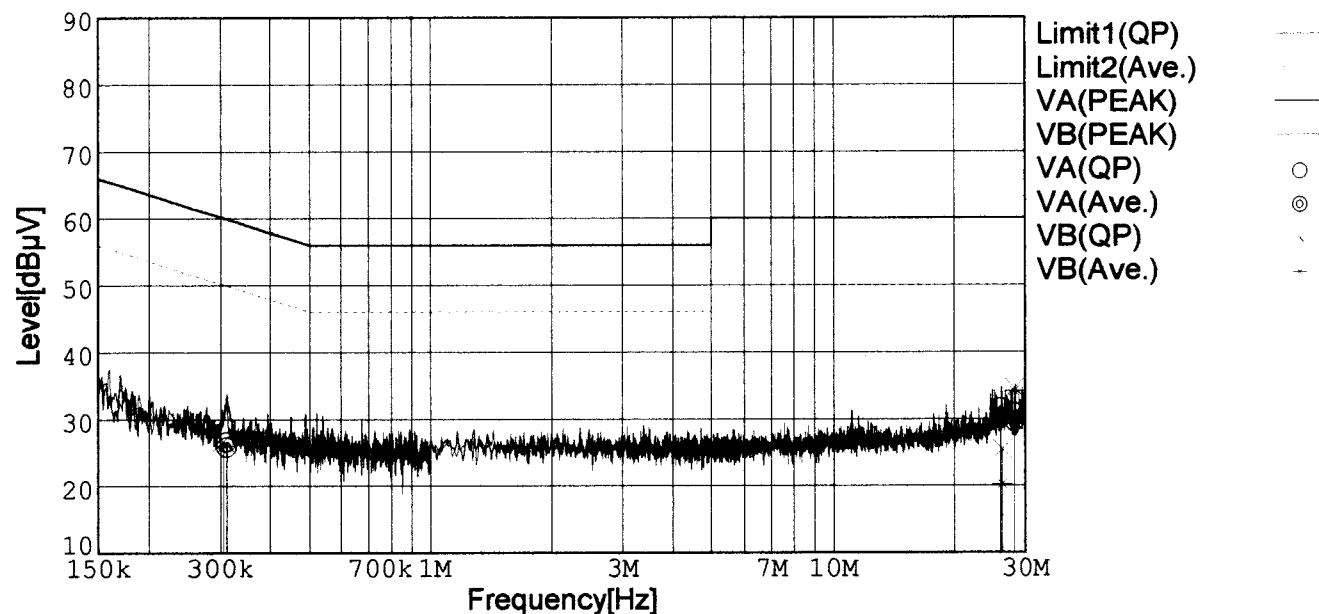
Temp. : 25degC

Humi. : 40%

Date : 2002/7/11 18:15

Test Equip. : R3132,ESPC

Comment : DC 24V, Io=3.4A



Frequency [MHz]	Meter Reading (QP) [dBμV]	Meter Reading (Ave.) [dBμV]	Factor [dB]	Level (QP) [dBμV]	Level (Ave.) [dBμV]	Line	Limit (QP) [dBμV]	Limit (Ave.) [dBμV]	Margin (QP)[dB]	Margin (Ave.) [dB]
0.3102	16.8	16.0	9.8	26.6	25.8	VA	60.0	50.0	33.4	24.2
26.0446	21.2	19.6	10.4	31.6	30.0	VA	60.0	50.0	28.4	20.0
28.1847	20.5	19.1	10.4	30.9	29.5	VA	60.0	50.0	29.1	20.5
0.3044	16.9	16.2	9.8	26.7	26.0	VB	60.1	50.1	33.4	24.1
26.2525	15.0	9.8	10.4	25.4	20.2	VB	60.0	50.0	34.6	29.8
28.1811	24.2	23.7	10.4	34.6	34.1	VB	60.0	50.0	25.4	15.9

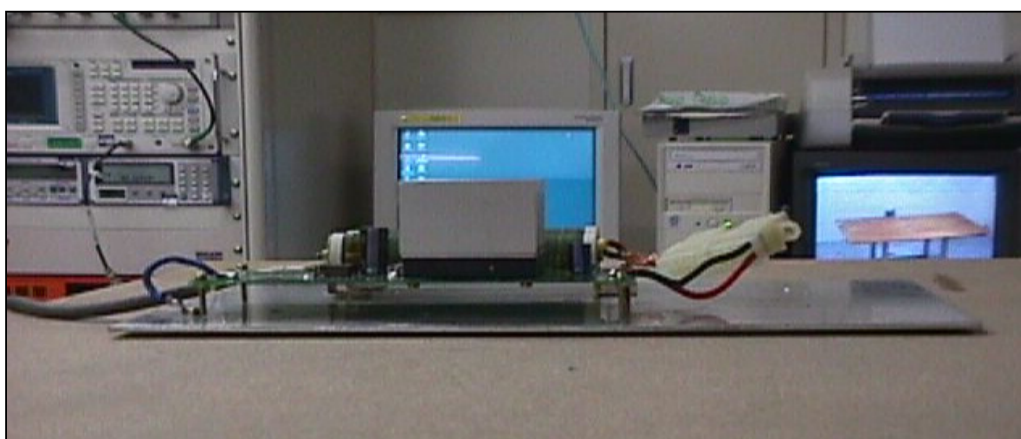
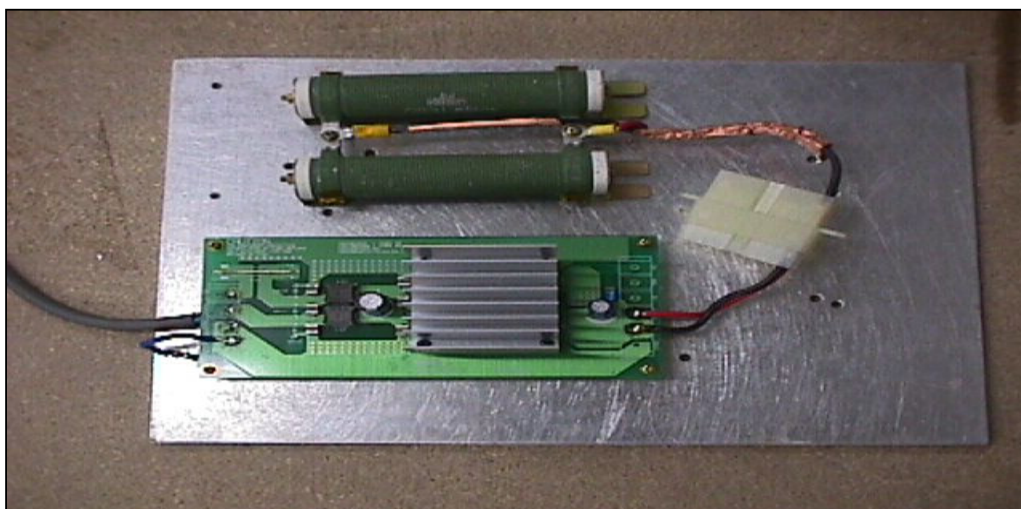
Conditions

Date 2002/7/19

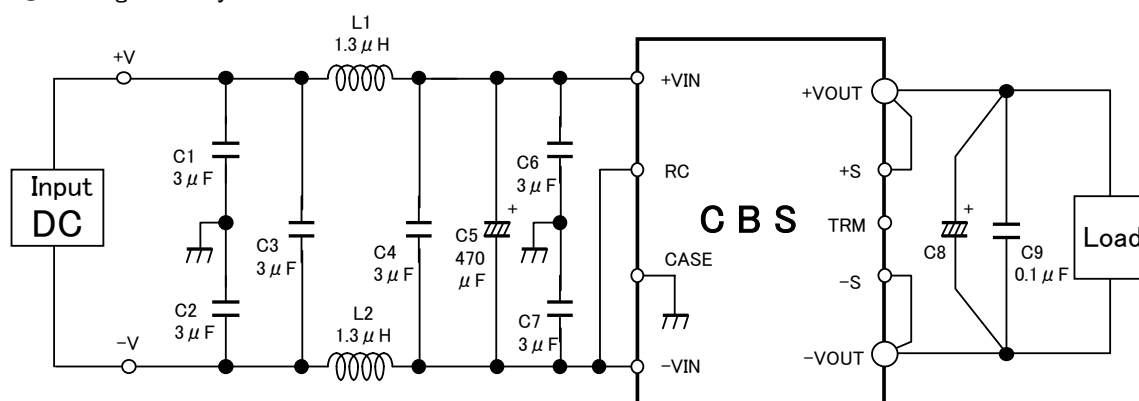
Test : LINE CONDUCTION

Model Name : CBS502403/15/24

○Photographs of Test Set-Up



○Testing circuitry



L1, L2 : ETQP6F1R3LFA (MATSUSHITA)

C1, C2, C3,

C4, C6, C7 : CY55Y5P2A305M (TOKIN)

C5 : 50V 470 μ F PMseries (nichicon)

C8 : CBS502403 10V 2200 μ F LXZseries (NIPPON CHEMI-CON)

CBS502415 25V 470 μ F LXZseries (NIPPON CHEMI-CON)

CBS502424 35V 220 μ F LXZseries (NIPPON CHEMI-CON)

C9 : MDD21H104M (Nitsuko)

Fig. Testing circuitry