



# RADIATED EMISSION

Model Name : CDS4004805

Tested by : J.Hatagishi

Model No. :

Temp. : 25degC

Serial No. :

Humi. : 40%

Points : 3

Date : 2002/3/7 18:57

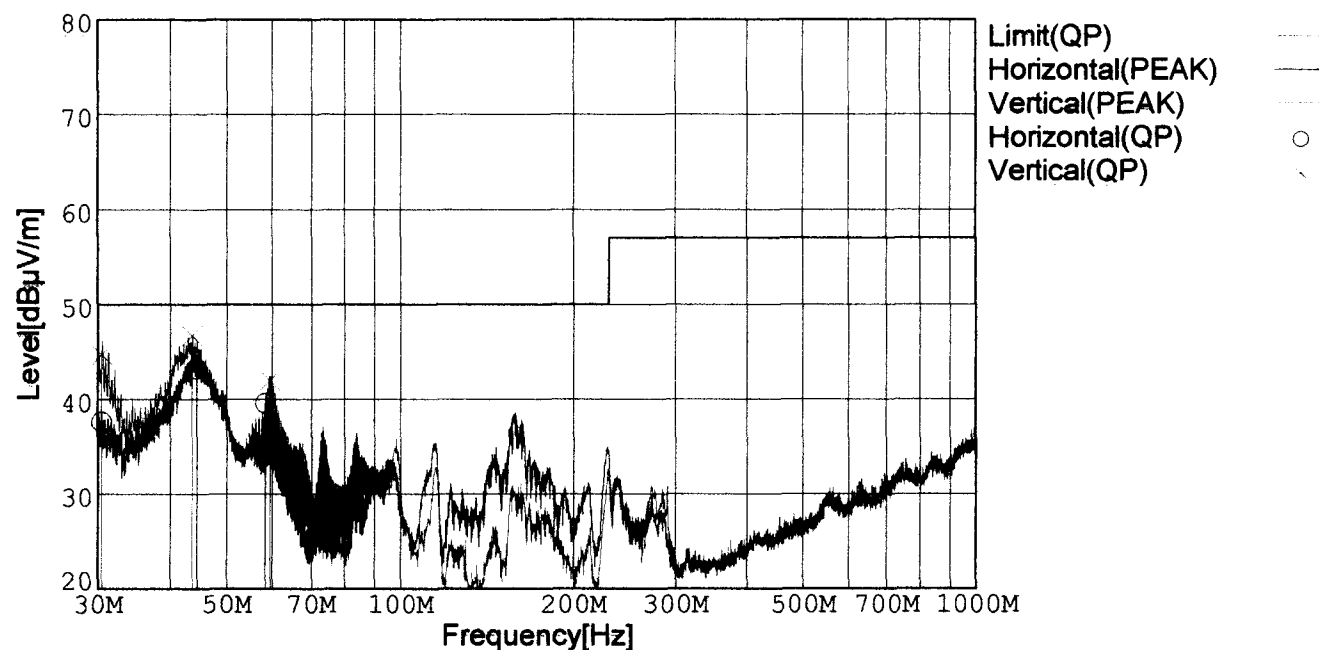
Detector : PEAK/QP

Test Equip. : R3132,ESPC

Polarization : Hori. &amp; Vert.

Comment : Vin=DC48V Io=100% (5V 80A)

Limit: [EN 55022] Class A&lt;3m&gt;



Frequency [MHz]	Meter Reading (QP) [dBμV]	Ant. Type	Antenna Factor [dB/m]	Cable & Preamp [dB]	Level (QP) [dBμV/m]	Angle[°]	Height [cm]	Polar.	Limit [dBμV/m]	Margin [dB]
44.468	54.1	BL	10.6	-21.5	43.2	143	102	Hori.	50.0	6.8
58.315	56.0	BL	5.0	-21.5	39.5	154	155	Hori.	50.0	10.5
30.467	48.4	BL	18.0	-21.7	44.7	90	101	Vert.	50.0	5.3
43.647	57.3	BL	11.0	-21.6	46.7	93	100	Vert.	50.0	3.3
59.421	58.7	BL	4.8	-21.5	42.0	120	118	Vert.	50.0	8.0

BL: Biconi-Log

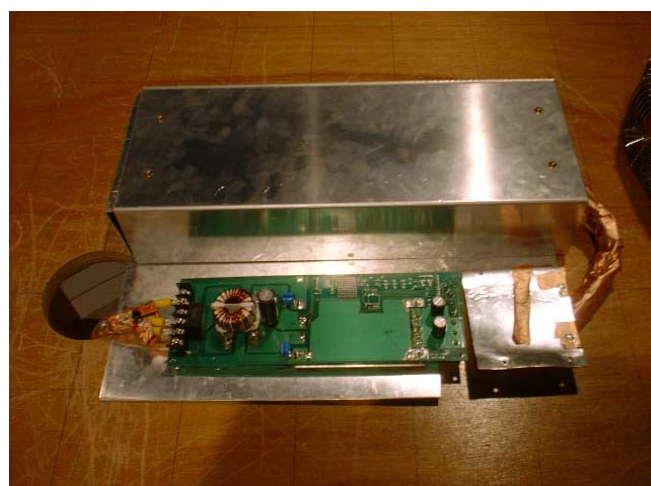
## Conditions

Date 2002/3/7

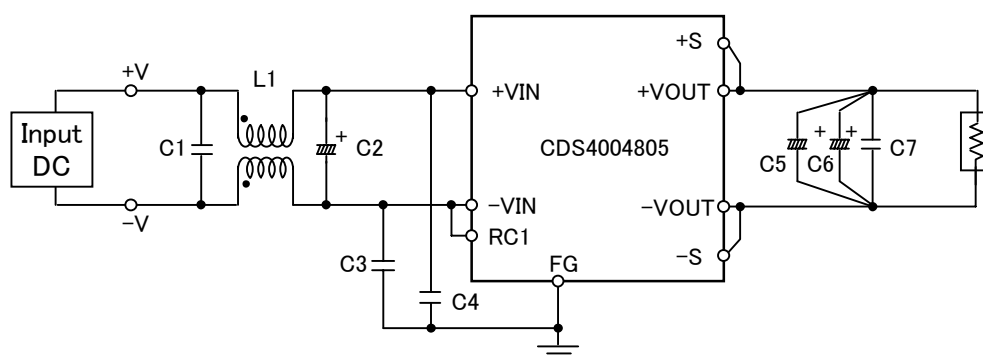
Test : RADIATED EMISSION

Model Name : CDS4004805

○Photographs of Test Set-Up



○Testing circuitry



L1	: 1mH	SC15-10JH (TOKIN)
C1	: 0.68 $\mu$ F	CFJC22E684M (NITSUKO)
C2	: 100V 470 $\mu$ F	PM series (NICHICON)
C3,C4	: 630V 0.033 $\mu$ F	MDS22J333K (NITSUKO)
C5,C6	: 10V 2200 $\mu$ F	PW series (NICHICON)
C7	: 50V 0.1 $\mu$ F	MDD21H104M (NITSUKO)

Fig. Testing circuitry



# LINE CONDUCTION

Model Name : CDS4004805

Model No. :

Serial No. :

Points : 3

Detector : PEAK/QP/Ave.

Line Mode : VA/VB

Limit1: [EN 55022] Class A(QP)

Limit2: [EN 55022] Class A(Ave.)

Tested by : J.Hatagishi

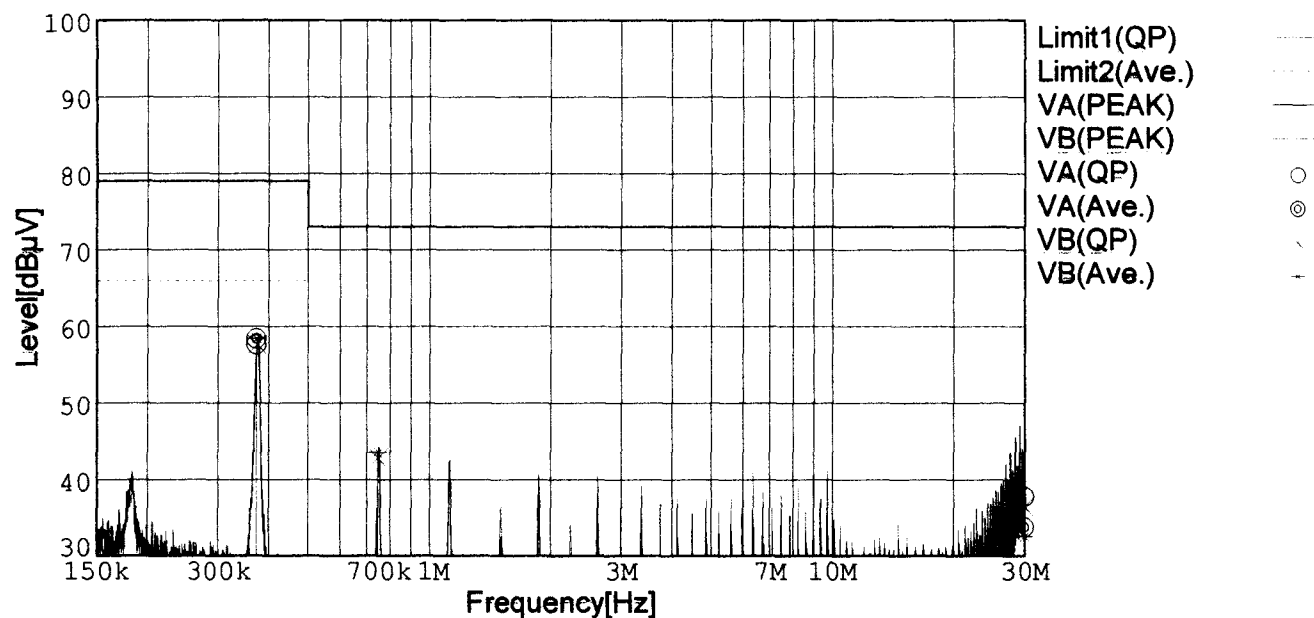
Temp. : 25degC

Humi. : 40%

Date : 2002/3/7 1:19

Test Equip. : R3132,ESPC

Comment : Vin=DC48V Io=100% (5V 80A)



Frequency [MHz]	Meter Reading (QP) [dBμV]	Meter Reading (Ave.) [dBμV]	Factor [dB]	Level (QP) [dBμV]	Level (Ave.) [dBμV]	Line	Limit (QP) [dBμV]	Limit (Ave.) [dBμV]	Margin (QP) [dB]	Margin (Ave.) [dB]
0.3722	47.8	48.6	9.8	57.6	58.4	VA	79.0	66.0	21.4	7.6
29.9991	27.3	23.3	10.4	37.7	33.7	VA	73.0	60.0	35.3	26.3
0.3727	47.8	48.6	9.8	57.6	58.4	VB	79.0	66.0	21.4	7.6
0.7452	32.9	33.6	9.9	42.8	43.5	VB	73.0	60.0	30.2	16.5
29.9989	26.1	22.1	10.4	36.5	32.5	VB	73.0	60.0	36.5	27.5

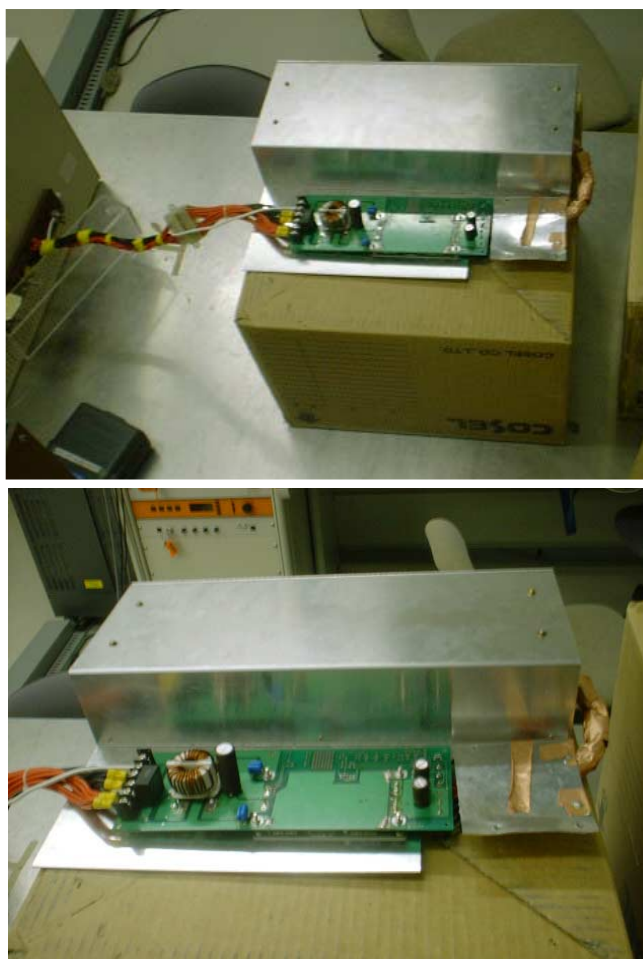
## Conditions

Date 2002/3/7

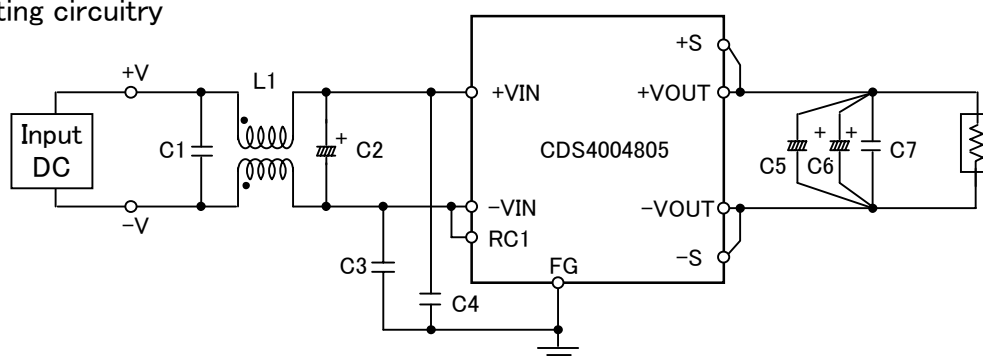
Test : LINE CONDUCTION

Model Name : CDS4004805

○Photographs of Test Set-Up



○Testing circuitry



L1	: 1mH	SC15-10JH (TOKIN)
C1	: 0.68 $\mu$ F	CFJC22E684M (NITSUKO)
C2	: 100V 470 $\mu$ F	PM series (NICHICON)
C3,C4	: 630V 0.033 $\mu$ F	MDS22J333K (NITSUKO)
C5,C6	: 10V 2200 $\mu$ F	PW series (NICHICON)
C7	: 50V 0.1 $\mu$ F	MDD21H104M (NITSUKO)

Fig. Testing circuitry