



RADIATED EMISSION

Model Name : CDS4004807

Model No. :

Serial No. :

Detector : PEAK/QP

Polarization : Hori. & Vert.

Tested by : J.Hatagishi

Temp. : 25degC

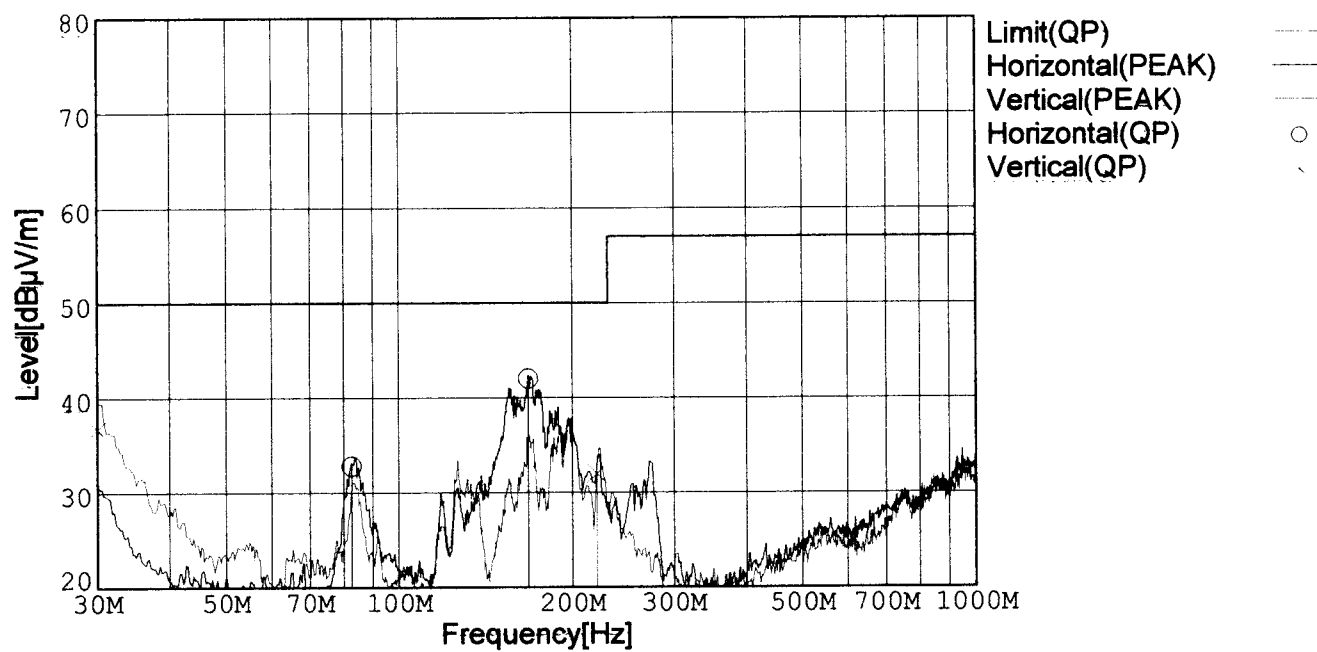
Humi. : 40%

Date : 2002/3/9 8:15

EMI Receiver(s) : R3261A,ESPC

Comment : Vin=DC48V Io=100%(7.5V 54A)

Limit: [EN 55022] Class A<3m>



Frequency [MHz]	Meter Reading (QP) [dBμV]	Ant. Type	Antenna Factor [dB/m]	Cable & Preamp [dB]	Level (QP) [dBμV/m]	Angle[°]	Height [cm]	Polar.	Limit [dBμV/m]	Margin [dB]
167.694	56.8	BL	-27.7	12.9	42.0	31	148	Hori.	50.0	8.0
82.585	51.2	BL	-28.3	9.9	32.8	204	148	Hori.	50.0	17.2
30.000	48.9	BL	-29.0	16.8	36.7	123	105	Vert.	50.0	13.3
220.001	50.6	BL	-27.4	8.8	32.0	344	110	Vert.	50.0	18.0

BL: Biconi-Log

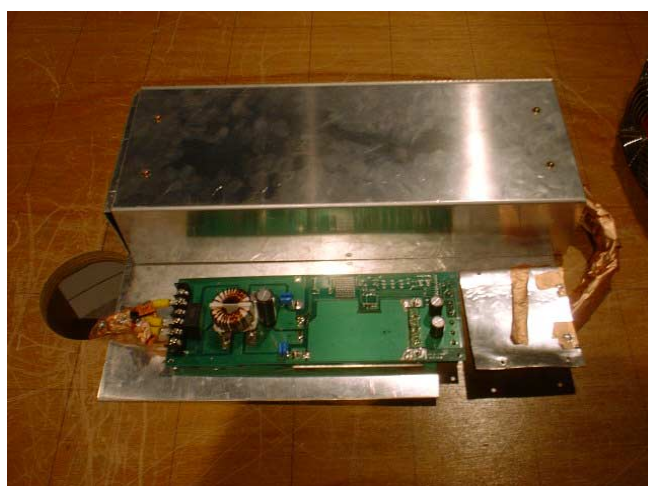
Conditions

Date 2002/3/9

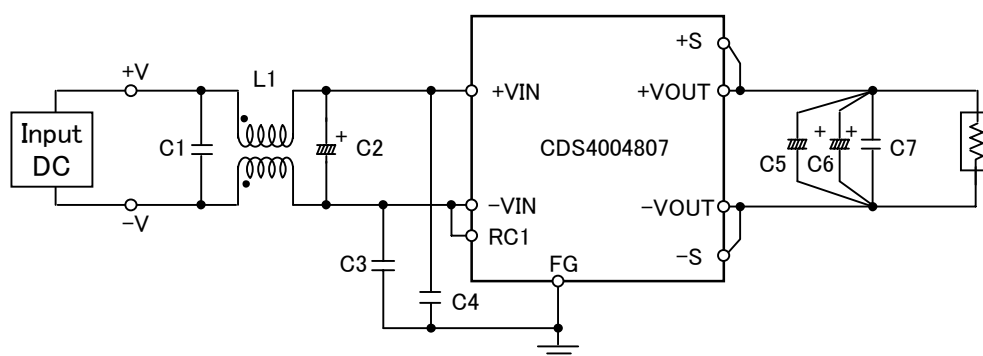
Test : RADIATED EMISSION

Model Name : CDS4004807

○Photographs of Test Set-Up



○Testing circuitry



L1	: 1mH	SC15-10JH (TOKIN)
C1	: 0.68 μ F	CFJC22E684M (NITSUKO)
C2	: 100V 470 μ F	PM series (NICHICON)
C3,C4	: 630V 0.033 μ F	MDS22J333K (NITSUKO)
C5,C6	: 10V 2200 μ F	PW series (NICHICON)
C7	: 50V 0.1 μ F	MDD21H104M (NITSUKO)

Fig. Testing circuitry



LINE CONDUCTION

Model Name : CDS4004807

Model No. :

Serial No. :

Points : 4

Detector : PEAK/QP/Ave.

Line Mode : VA/VB

Limit1: [EN 55022] Class A(QP)

Limit2: [EN 55022] Class A(Ave.)

Tested by : J.Hatagishi

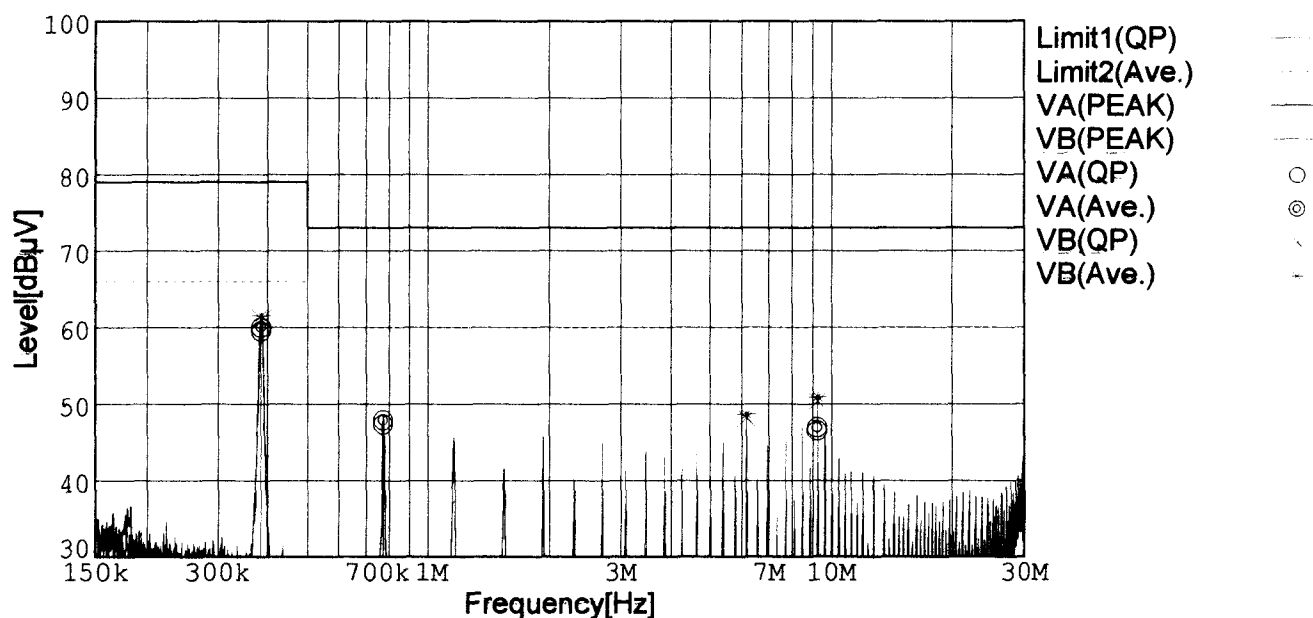
Temp. : 25degC

Humi. : 40%

Date : 2002/3/9 1:14

Test Equip. : R3132,ESPC

Comment : Vin=DC48V Io=100%(7.5V 54A)



Frequency [MHz]	Meter Reading (QP) [dBμV]	Meter Reading (Ave.) [dBμV]	Factor [dB]	Level (QP) [dBμV]	Level (Ave.) [dBμV]	Line	Limit (QP) [dBμV]	Limit (Ave.) [dBμV]	Margin (QP) [dB]	Margin (Ave.) [dB]
0.3850	49.7	50.2	9.8	59.5	60.0	VA	79.0	66.0	19.5	6.0
0.7706	37.4	37.9	9.9	47.3	47.8	VA	73.0	60.0	25.7	12.2
9.2438	36.4	36.8	10.1	46.5	46.9	VA	73.0	60.0	26.5	13.1
0.3854	51.3	51.8	9.8	61.1	61.6	VB	79.0	66.0	17.9	4.4
6.1630	38.1	38.7	10.0	48.1	48.7	VB	73.0	60.0	24.9	11.3
9.2427	40.3	40.8	10.1	50.4	50.9	VB	73.0	60.0	22.6	9.1

Conditions

Date 2002/3/9

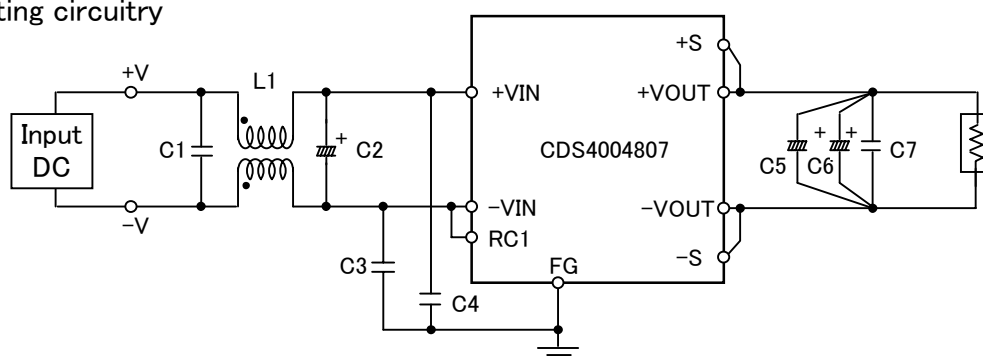
Test : LINE CONDUCTION

Model Name : CDS4004807

○Photographs of Test Set-Up



○Testing circuitry



L1	: 1mH	SC15-10JH (TOKIN)
C1	: 0.68 μ F	CFJC22E684M (NITSUKO)
C2	: 100V 470 μ F	PM series (NICHICON)
C3,C4	: 630V 0.033 μ F	MDS22J333K (NITSUKO)
C5,C6	: 10V 2200 μ F	PW series (NICHICON)
C7	: 50V 0.1 μ F	MDD21H104M (NITSUKO)

Fig. Testing circuitry