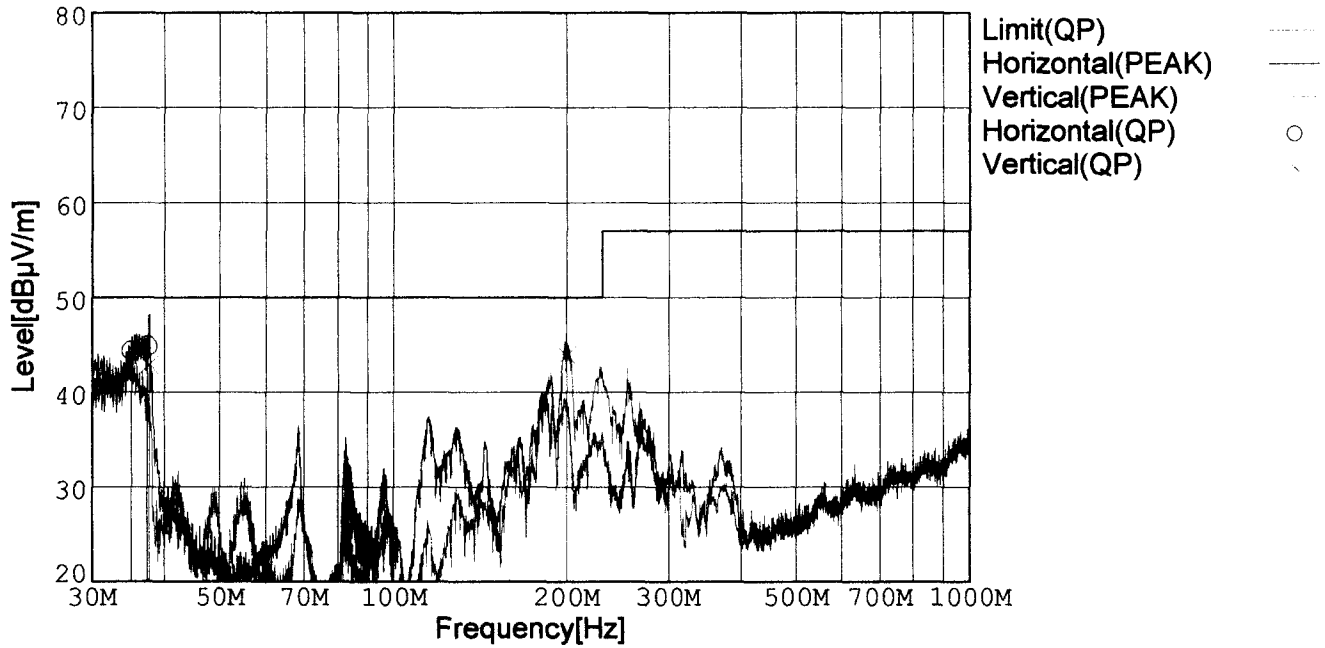


RADIATED EMISSION

Model Name : CDS4004812
 Model No. :
 Serial No. :
 Points : 3
 Detector : PEAK/QP
 Polarization : Hori. & Vert.
 Limit: [EN 55022] Class A<3m>

Tested by : J.Hatagishi
 Temp. : 25degC
 Humi. : 40%
 Date : 2002/3/8 23:18
 Test Equip. : R3132,ESPC
 Comment : Vin=DC48V Io=100% (12.5V 40A)



Frequency [MHz]	Meter Reading (QP) [dBμV]	Ant. Type	Antenna Factor [dB/m]	Cable & Preamp [dB]	Level (QP) [dBμV/m]	Angle[°]	Height [cm]	Polar.	Limit [dBμV/m]	Margin [dB]
35.089	50.2	BL	15.7	-21.6	44.3	167	112	Hori.	50.0	5.7
37.388	52.1	BL	14.4	-21.6	44.9	196	100	Hori.	50.0	5.1
37.669	50.2	BL	14.3	-21.6	42.9	260	106	Vert.	50.0	7.1
199.834	56.1	BL	8.5	-20.7	43.9	158	106	Vert.	50.0	6.1

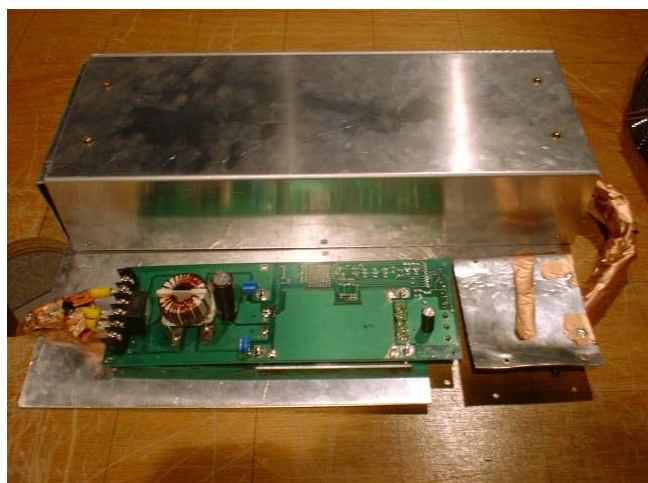
BL: Biconi-Log

Conditions

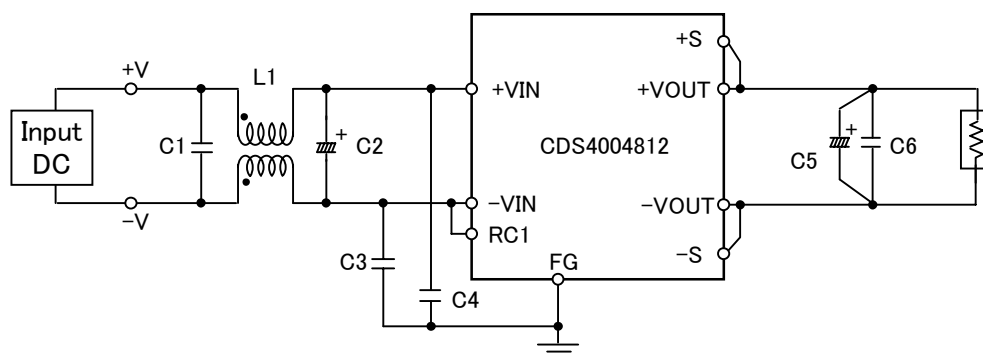
Date 2002/3/8

Test : RADIATED EMISSION
 Model Name : CDS4004812

○Photographs of Test Set-Up



○Testing circuitry



L1	: 1mH	SC15-10JH (TOKIN)
C1	: 0.68 μ F	CFJC22E684M (NITSUKO)
C2	: 100V 470 μ F	PM series (NICHICON)
C3,C4	: 630V 0.033 μ F	MDS22J333K (NITSUKO)
C5	: 35V 470 μ F	PW series (NICHICON)
C6	: 50V 0.1 μ F	MDD21H104M (NITSUKO)

Fig. Testing circuitry



LINE CONDUCTION

Model Name : CDS4004812

Model No. :

Serial No. :

Points : 4

Detector : PEAK/QP/Ave.

Line Mode : VA/VB

Limit1: [EN 55022] Class A(QP)

Limit2: [EN 55022] Class A(Ave.)

Tested by : J.Hatagishi

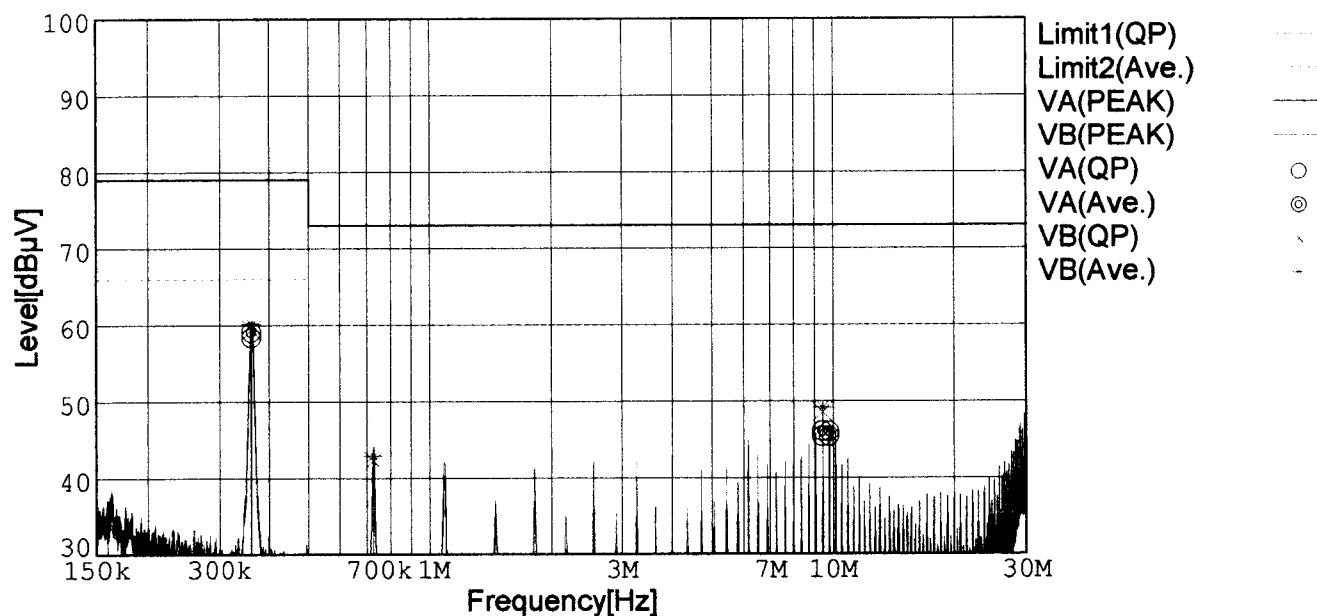
Temp. : 25degC

Humi. : 40%

Date : 2002/3/8 21:54

Test Equip. : R3132,ESPC

Comment : Vin=48V Io=100% (12.5V 40A)



Frequency [MHz]	Meter Reading (QP) [dBμV]	Meter Reading (Ave.) [dBμV]	Factor [dB]	Level (QP) [dBμV]	Level (Ave.) [dBμV]	Line	Limit (QP) [dBμV]	Limit (Ave.) [dBμV]	Margin (QP)[dB]	Margin (Ave.) [dB]
0.3614	48.5	49.3	9.8	58.3	59.1	VA	79.0	66.0	20.7	6.9
9.4140	35.2	36.0	10.1	45.3	46.1	VA	73.0	60.0	27.7	13.9
9.7734	35.3	35.9	10.1	45.4	46.0	VA	73.0	60.0	27.6	14.0
0.3621	49.6	50.4	9.8	59.4	60.2	VB	79.0	66.0	19.6	5.8
0.7249	32.3	33.0	9.9	42.2	42.9	VB	73.0	60.0	30.8	17.1
9.4130	38.4	39.0	10.1	48.5	49.1	VB	73.0	60.0	24.5	10.9

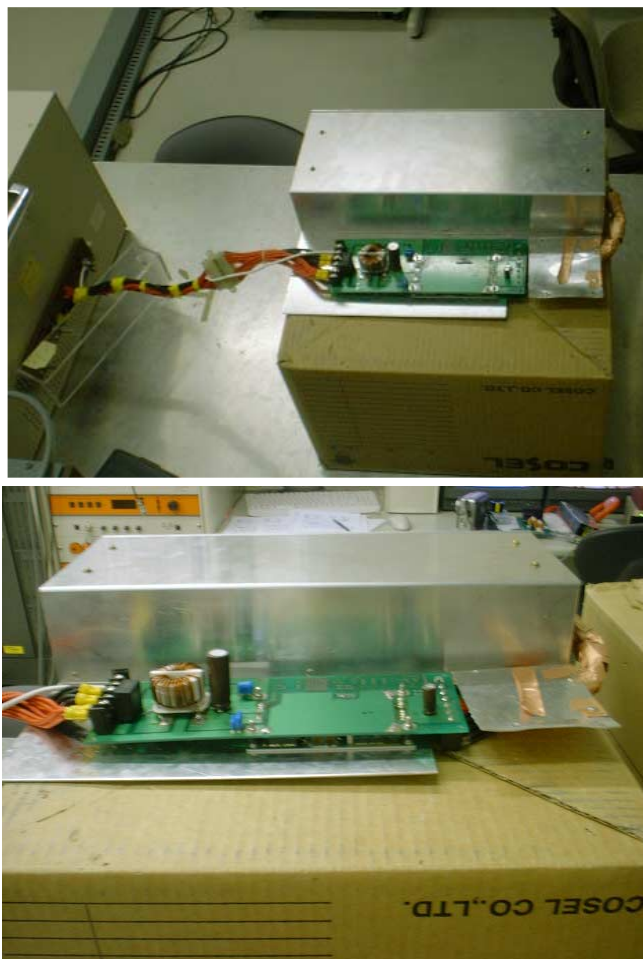
Conditions

Date 2002/3/8

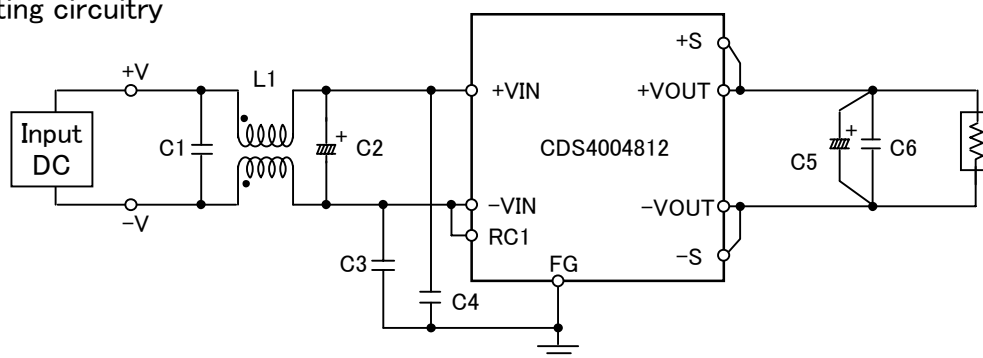
Test : LINE CONDUCTION

Model Name : CDS4004812

○Photographs of Test Set-Up



○Testing circuitry



L1	: 1mH	SC15-10JH (TOKIN)
C1	: 0.68 μ F	CFJC22E684M (NITSUKO)
C2	: 100V 470 μ F	PM series (NICHICON)
C3,C4	: 630V 0.033 μ F	MDS22J333K (NITSUKO)
C5	: 35V 470 μ F	PW series (NICHICON)
C6	: 50V 0.1 μ F	MDD21H104M (NITSUKO)

Fig. Testing circuitry