



RADIATED EMISSION

Model Name : CDS4004828

Model No. :

Serial No. :

Points : 4

Detector : PEAK/QP

Polarization : Hori. & Vert.

Limit: [EN 55022] Class A<3m>

Tested by : J.Hatagishi

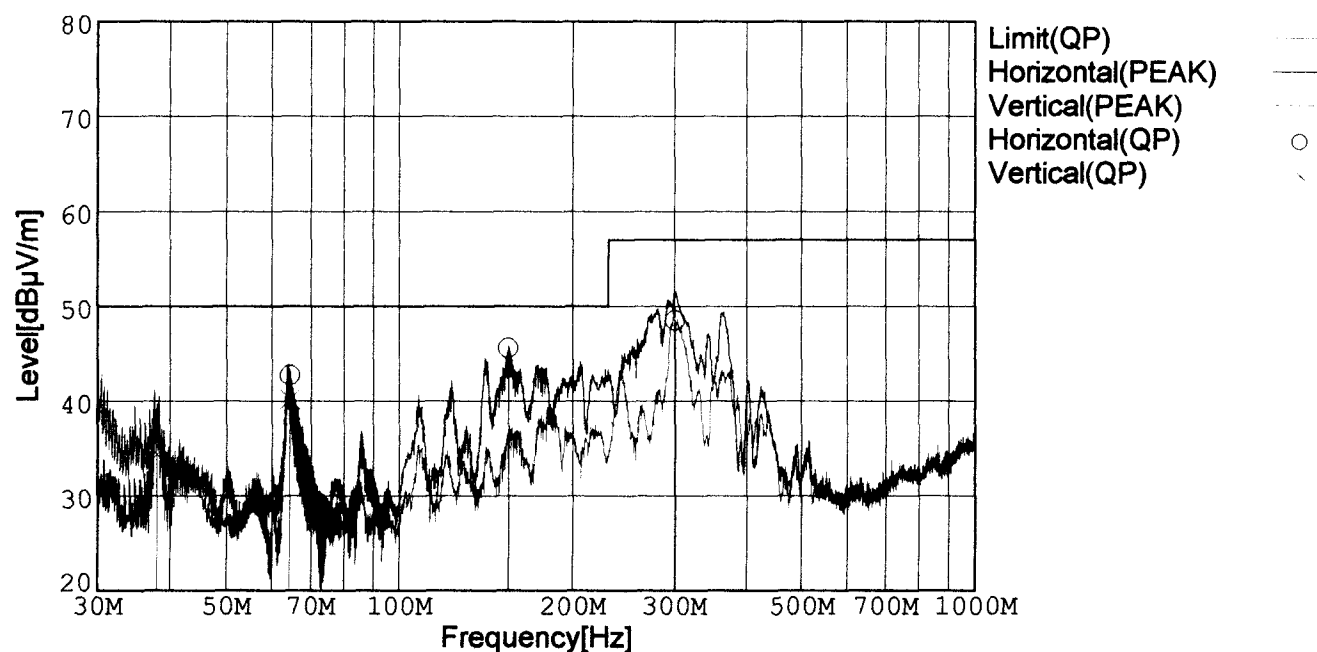
Temp. : 25degC

Humi. : 40%

Date : 2002/3/8 10:47

Test Equip. : R3132,ESPC

Comment : Vin=DC48V Io=100% (28V 18A)



Frequency [MHz]	Meter Reading (QP) [dBμV]	Ant. Type	Antenna Factor [dB/m]	Cable & Preamp [dB]	Level (QP) [dBμV/m]	Angle[°]	Height [cm]	Polar.	Limit [dBμV/m]	Margin [dB]
64.359	59.3	BL	4.8	-21.4	42.7	132	136	Hori.	50.0	7.3
154.453	56.1	BL	10.3	-20.9	45.5	272	160	Hori.	50.0	4.5
300.300	55.8	BL	13.1	-20.4	48.5	36	100	Hori.	57.0	8.5
64.366	56.8	BL	4.8	-21.4	40.2	148	109	Vert.	50.0	9.8

BL: Biconi-Log

Conditions

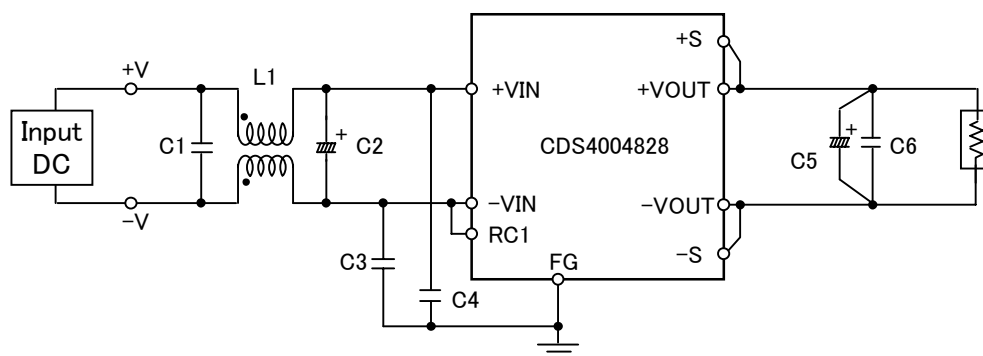
Date 2002/3/8

Test : RADIATED EMISSION
 Model Name : CDS4004828

○Photographs of Test Set-Up



○Testing circuitry



L1	: 1mH	SC15-10JH (TOKIN)
C1	: 0.68 μ F	CFJC22E684M (NITSUKO)
C2	: 100V 470 μ F	PM series (NICHICON)
C3,C4	: 630V 0.033 μ F	MDS22J333K (NITSUKO)
C5	: 35V 220 μ F	PW series (NICHICON)
C6	: 50V 0.1 μ F	MDD21H104M (NITSUKO)

Fig. Testing circuitry



LINE CONDUCTION

Model Name : CDS4004828

Model No. :

Serial No. :

Points : 3

Detector : PEAK/QP/Ave.

Line Mode : VA/VB

Limit1: [EN 55022] Class A(QP)

Limit2: [EN 55022] Class A(Ave.)

Tested by : J.Hatagishi

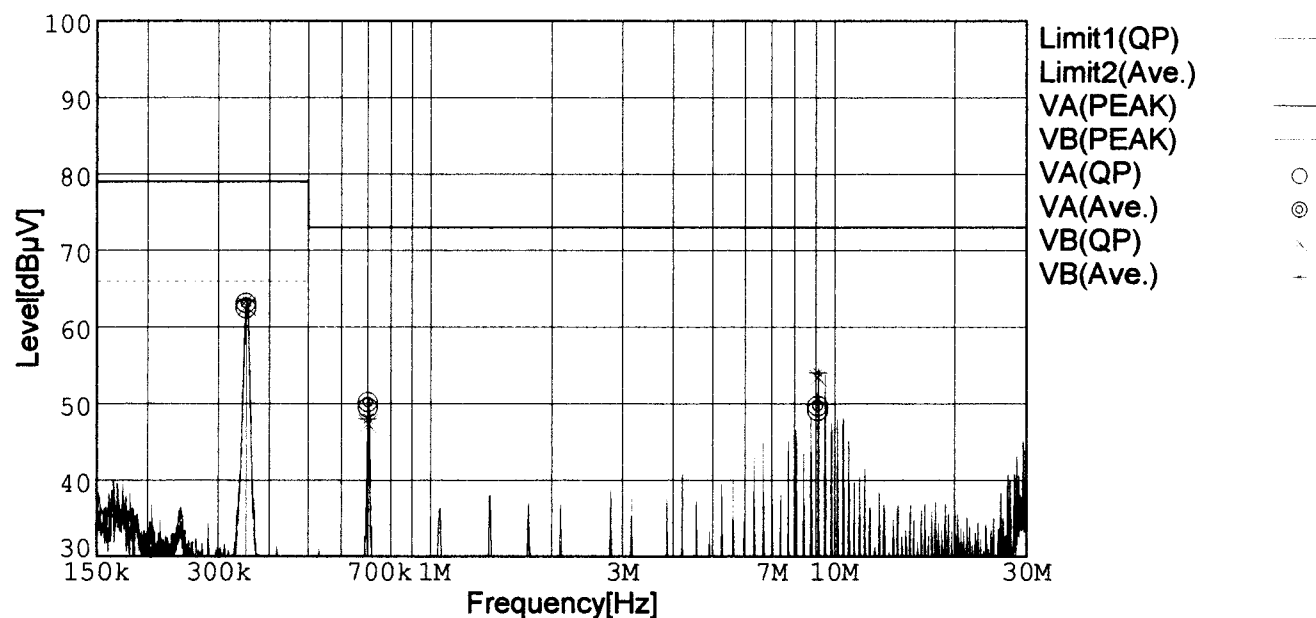
Temp. : 25degC

Humi. : 40%

Date : 2002/3/8 10:02

Test Equip. : R3132,ESPC

Comment : Vin=DC48V Io=100% (28V 18A)



Frequency [MHz]	Meter Reading (QP) [dBμV]	Meter Reading (Ave.) [dBμV]	Factor [dB]	Level (QP) [dBμV]	Level (Ave.) [dBμV]	Line	Limit (QP) [dBμV]	Limit (Ave.) [dBμV]	Margin (QP)[dB]	Margin (Ave.) [dB]
0.3500	52.6	53.3	9.8	62.4	63.1	VA	79.0	66.0	16.6	2.9
0.7006	39.6	40.4	9.8	49.4	50.2	VA	73.0	60.0	23.6	9.8
9.1006	39.0	39.6	10.1	49.1	49.7	VA	73.0	60.0	23.9	10.3
0.3503	52.9	53.6	9.8	62.7	63.4	VB	79.0	66.0	16.3	2.6
0.7008	37.5	38.2	9.8	47.3	48.0	VB	73.0	60.0	25.7	12.0
9.0955	43.3	43.9	10.1	53.4	54.0	VB	73.0	60.0	19.6	6.0

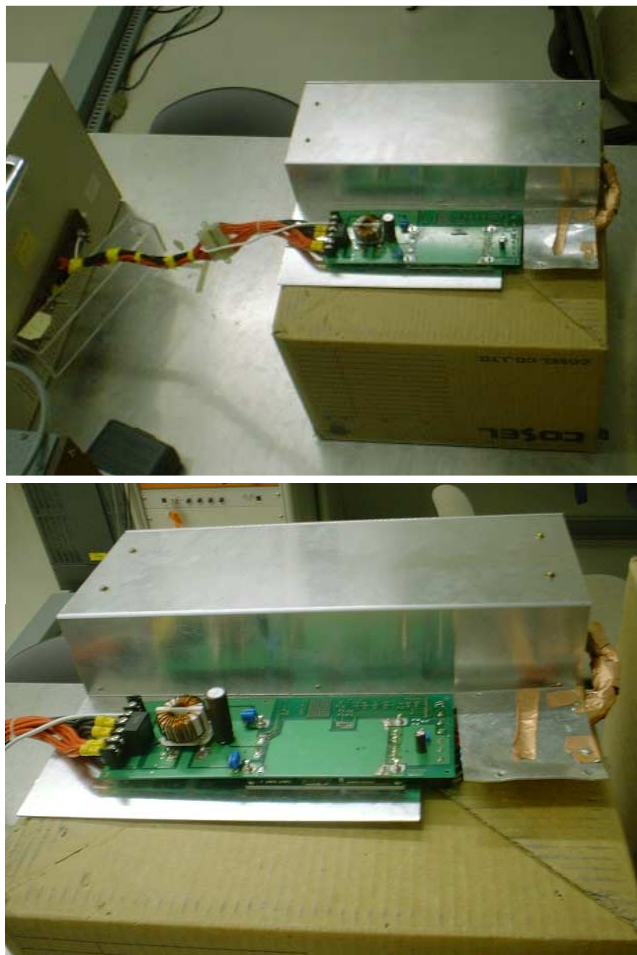
Conditions

Date 2002/3/8

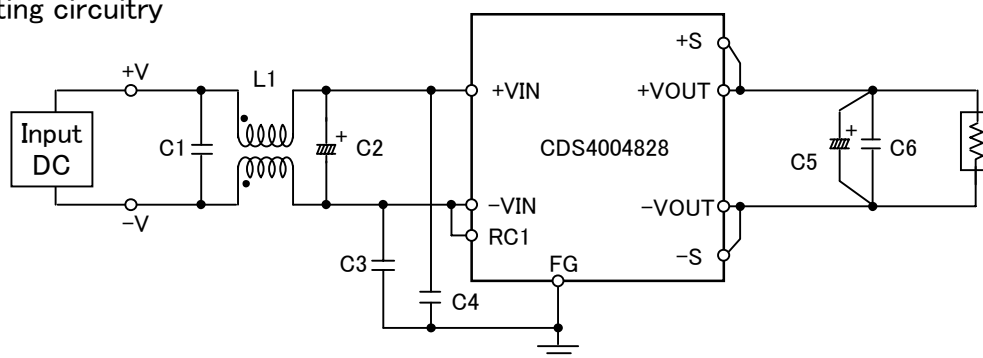
Test : LINE CONDUCTION

Model Name : CDS4004828

○Photographs of Test Set-Up



○Testing circuitry



L1	: 1mH	SC15-10JH (TOKIN)
C1	: 0.68 μ F	CFJC22E684M (NITSUKO)
C2	: 100V 470 μ F	PM series (NICHICON)
C3,C4	: 630V 0.033 μ F	MDS22J333K (NITSUKO)
C5	: 35V 220 μ F	PW series (NICHICON)
C6	: 50V 0.1 μ F	MDD21H104M (NITSUKO)

Fig. Testing circuitry