

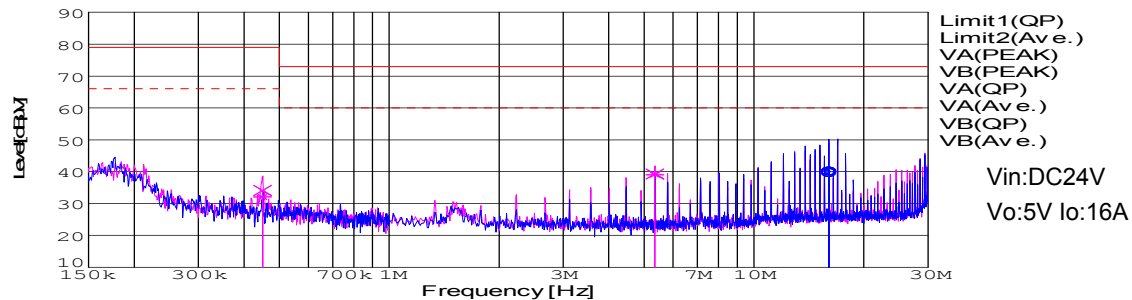
DATA SHEET

Date		Aug 6,2007	
Model	CES24050-16	Temp.	25 degreeC
Test	EMI Line conduction & Radiated emission	Humid.	45 %RH
		Tested by	T.Mizuhara

LINE CONDUCTION

Model Name : CES24050-16
 Model No. :
 Serial No. :
 Points : 3
 Detector : PEAK/QP/Ave.
 Line Mode : VA/VB
 Power Supply : DC 24V
 Limit1: [EN 55022] Class A(QP)
 Limit2: [EN 55022] Class A(Ave.)

Temp. : 25degC
 Humi. : 45%
 Date : 2007/8/6 13:10
 Test Equip. : R3132,ESPC
 Load Line :
 Comment :

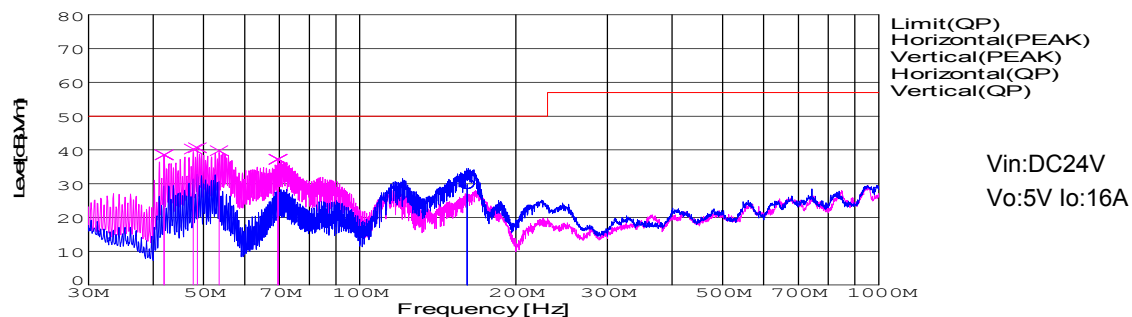


Frequency [MHz]	Meter Reading (Ave.) [dBuV]	Meter Reading (QP) [dBuV]	Factor [dB]	Level(Ave.) [dBuV]	Level(QP) [dBuV]	Line	Limit(Ave.) [dBuV]	Limit(QP) [dBuV]	Margin(Ave.) [dB]	Margin(QP) [dB]
16.0537	29.4	29.9	10.2	39.6	40.1	VA	60	73	20.4	32.9
0.4497	22.2	24.2	9.9	32.1	34.1	VB	66	79	33.9	44.9
5.3516	29.1	29.2	10	39.1	39.2	VB	60	73	20.9	33.8

RADIATED EMISSION

Model Name : CES24050-16
 Model No. :
 Serial No. :
 Points : 6
 Detector : PEAK/QP
 Polarization : Hori. & Vert.
 Power Supply : DC 24V
 Limit: [EN 55022] Class A<3m>

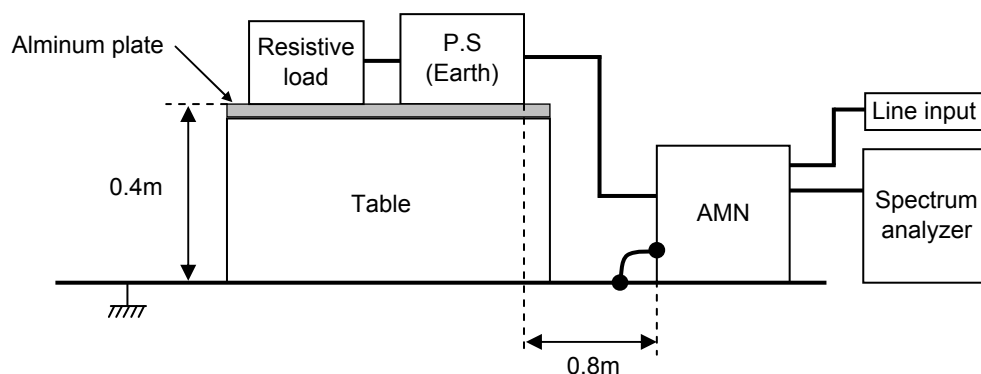
Temp. : 25degC
 Humi. : 45%
 Date : 2007/8/6 15:22
 Test Equip. : R3132,ESPC
 Load Line :
 Comment :



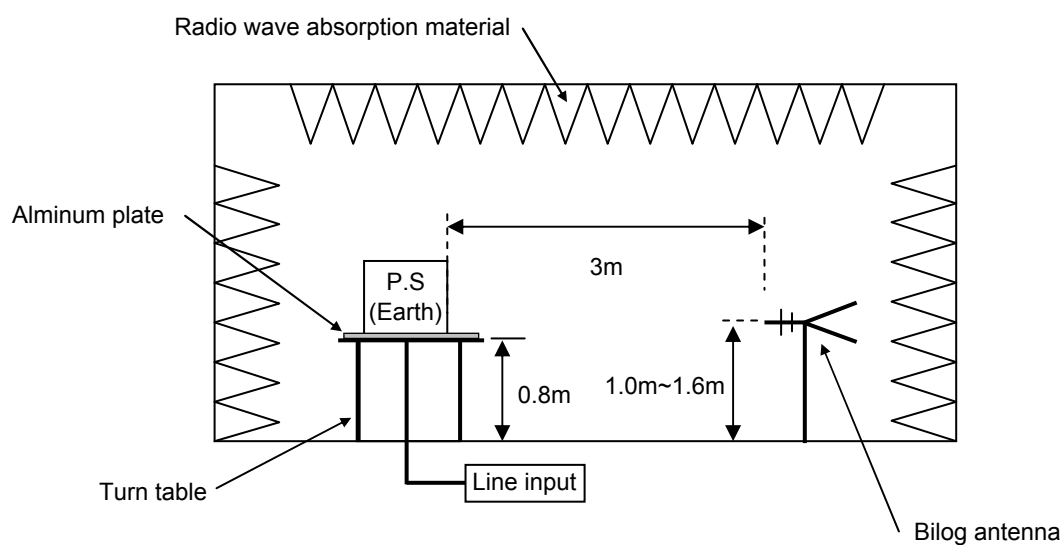
Frequency [MHz]	Meter Reading (QP) [dBuV]	Ant. Type	Antenna Factor [dB/m]	Cable & Preamp [dB]	Level(QP) [dBuV/m]	Angle [°]	Height [cm]	Polar.	Limit [dBuV/m]	Margin [dB]
161.057	46.8	BL	9.8	-26.9	29.7	13	156	Hori.	50	20.3
48.639	59.5	BL	8.4	-27.3	40.6	63	121	Vert.	50	9.4
47.749	59	BL	8.8	-27.5	40.3	79	102	Vert.	50	9.7
53.548	60	BL	6.2	-26.4	39.8	356	106	Vert.	50	10.2
69.6	57.9	BL	5.4	-26.1	37.2	279	113	Vert.	50	12.8
41.95	55.3	BL	11.9	-28.6	38.6	57	100	Vert.	50	11.4

DATA SHEET		Date	Aug 6,2007
Model	Circuit used for measurement	Temp.	25 degreeC
Test	EMI Line conduction & Radiated emission	Humid.	45 %RH
		Tested by	T.Mizuhara

1. Line conduction



2. Radiated emission



Conditions

Test : EMI

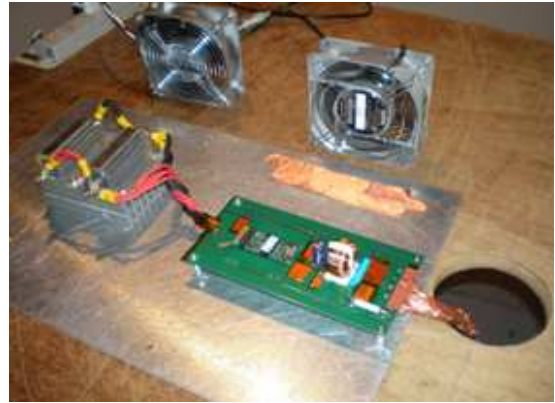
Model Name : CES24

Photographs of Test Set-Up

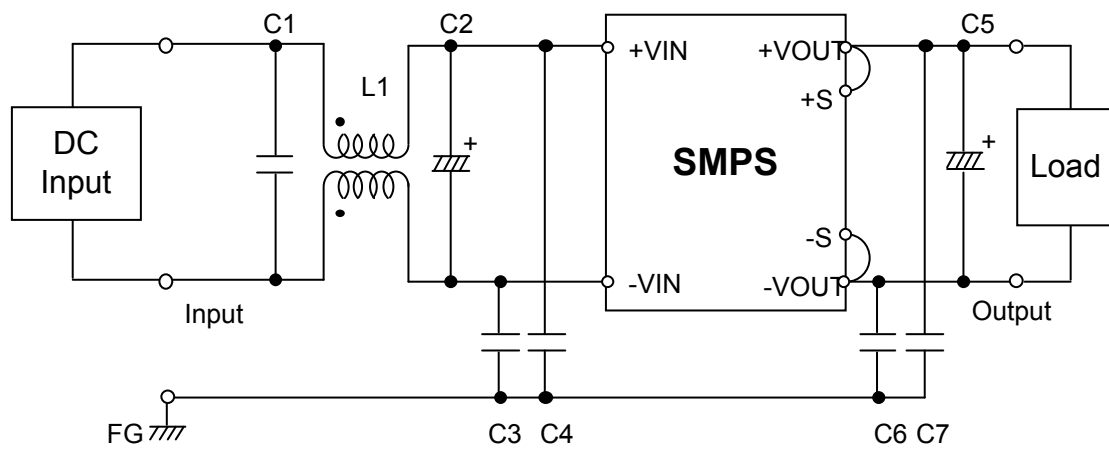
LINE CONDUCTION



RADIATED EMISSION



Testing circuitry



L1	: SC-10-10J	NEC/TOKIN	or equivalent.
C1	: 2.2 μ F 100V	Film capacitor	
C2	: 220 μ F 50V	Electric capacitor	
C3,4	: 0.068 μ F 630V	Film capacitor	
C5	: 10 μ F 25V	Electric capacitor	
C6,7	: 0.033 μ F 630V	Film capacitor	