

DATA SHEET				Date	23-May-08
Model	CES24150-4			Temp.	25 degreeC
Test	EMI Line conduction & Radiated emission			Humid.	45 %RH
				Tested by	J.Hatagishi

LINE CONDUCTION

Model Name : CES24150-4
 Model No. :
 Serial No. :
 Points : 4
 Detector : PEAK/QP/Ave.
 Line Mode : VA/VB
 Power Supply : DC 24V
 Limit1: [EN 55022] Class A(QP)
 Limit2: [EN 55022] Class A(Ave.)

Temp. : 25degC
 Humi. : 45%
 Date : 2008/5/23 19:16
 Test Equip. : R3132,ESPC
 Load Line :
 Comment :

Frequency [Hz]

Limit1(QP) ———

Limit2(Ave.) - - -

VA(PEAK) ———

VB(PEAK) ———

VA(QP) ○

VA(Ave.) ×

VB(QP) ○

VB(Ave.) ×

Vin:DC24V
Vo:15V Io:4A

Frequency [MHz]	Meter Reading (Ave.) [dBuV]	Meter Reading (QP) [dBuV]	Factor [dB]	Level(Ave.) [dBuV]	Level(QP) [dBuV]	Line	Limit(Ave.) [dBuV]	Limit(QP) [dBuV]	Margin(Ave.) [dB]	Margin(QP) [dB]
0.2573	16.8	21	9.8	26.6	30.8	VA	66	79	39.4	48.2
15.7361	37.8	37.5	10.2	48	47.7	VA	60	73	12	25.3
0.1952	20.8	25.8	9.8	30.6	35.6	VB	66	79	35.4	43.4
0.4501	28.7	29.4	9.9	38.6	39.3	VB	66	79	27.4	39.7
15.7352	34.4	34.4	10.2	44.6	44.6	VB	60	73	15.4	28.4

RADIATED EMISSION

Model Name : CES24150-4
 Model No. :
 Serial No. :
 Points : 5
 Detector : PEAK/QP
 Polarization : Hori. & Vert.
 Power Supply : DC 24V
 Limit: [EN 55022] Class A<3m>

Temp. : 25degC
 Humi. : 45%
 Date : 2008/5/23 20:22
 Test Equip. : R3132,ESPC
 Load Line :
 Comment :

Frequency [Hz]

Limit(QP) ———

Horizontal(PEAK) ———

Vertical(PEAK) ———

Horizontal(QP) ○

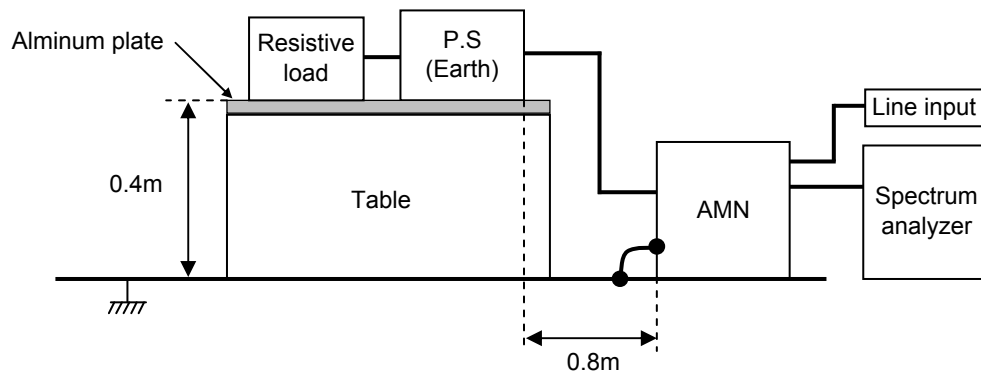
Vertical(QP) ×

Vin:DC24V
Vo:15V Io:4A

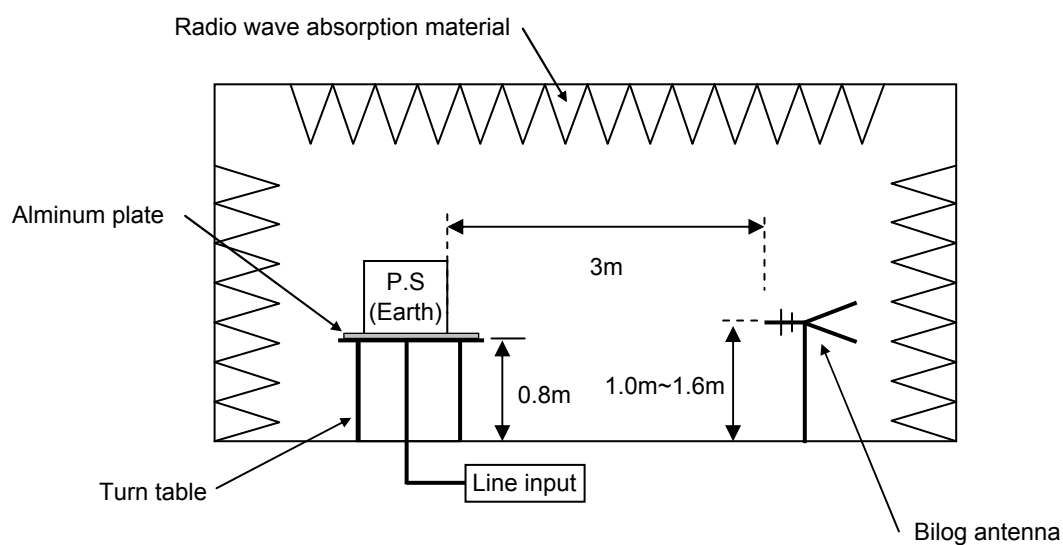
Frequency [MHz]	MeterReading (QP) [dBuV]	Ant. Type	Antenna Factor [dB/m]	Cable & Preamp [dB]	Level(QP) [dBuV/m]	Angle [°]	Height [cm]	Polar.	Limit [dBuV/m]	Margin [dB]
102.903	40.8	BL	10	-31.7	19.1	88	156	Hori.	50	30.9
107.854	43.5	BL	10.5	-31.7	22.3	267	149	Hori.	50	27.7
173.466	51.2	BL	8.7	-31.4	28.5	79	160	Hori.	50	21.5
42.234	43.4	BL	11.8	-32.2	23	133	101	Vert.	50	27
117.747	47.7	BL	10.9	-31.7	26.9	359	145	Vert.	50	23.1

DATA SHEET		Date	23-May-08
Model	Circuit used for measurement	Temp.	25 degreeC
Test	EMI Line conduction & Radiated emission	Humid.	45 %RH
		Tested by	J.Hatagishi

1. Line conduction



2. Radiated emission



Conditions

Test : EMI

Model Name : CES24

Photographs of Test Set-Up

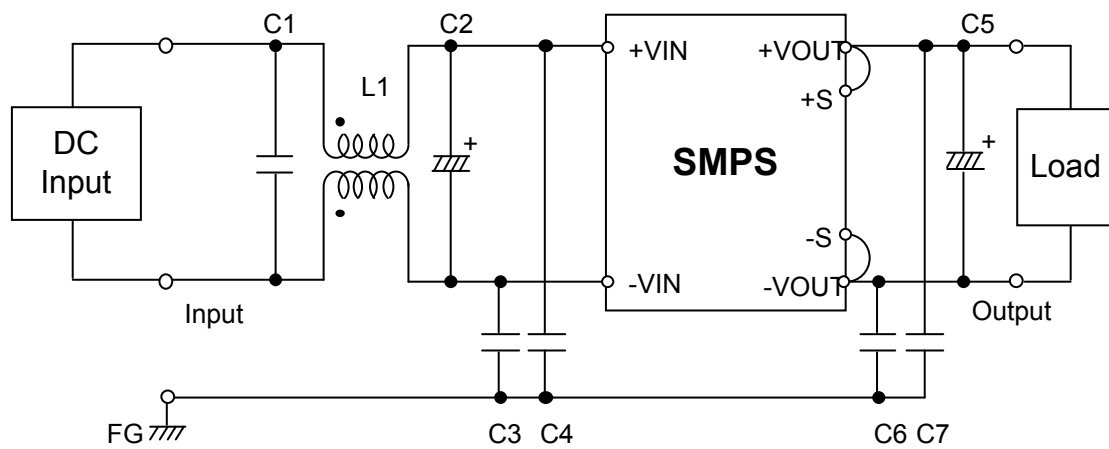
LINE CONDUCTION



RADIATED EMISSION



Testing circuitry



L1	: SC-10-10J	NEC/TOKIN	or equivalent.
C1	: 2.2 μ F 100V	Film capacitor	
C2	: 220 μ F 50V	Electric capacitor	
C3,4	: 0.068 μ F 630V	Film capacitor	
C5	: 10 μ F 25V	Electric capacitor	
C6,7	: 0.033 μ F 630V	Film capacitor	