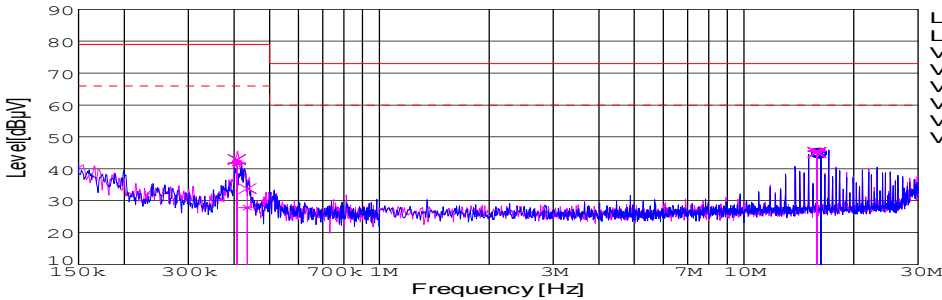
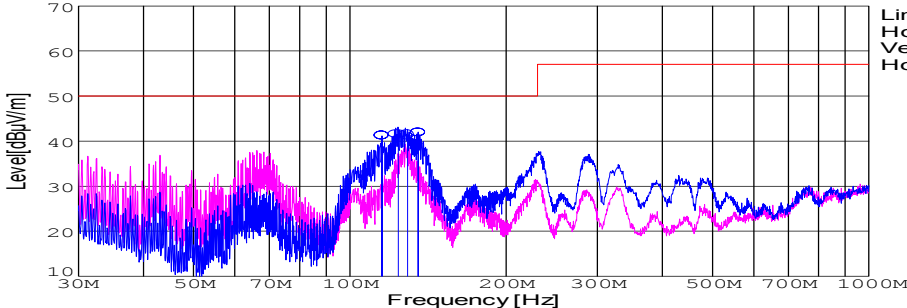


DATA SHEET							Date	16-Jul-03		
Model	CES48025-25						Temp.	25 degreeC		
Test	EMI Line conduction & Radiated emission						Humid.	45 %RH		
							Tested by	E.Nagata		
LINE CONDUCTION										
Model Name : CES48025-25			Temp. : 25							
Model No. :			Humi. : 45							
Serial No. :			Date : 2003/7/16 21:40							
Points : 4			Test Equip. : R3132,ESPC							
Detector : PEAK/QP/Ave.			Comment : E.Nagata							
Line Mode : VA/VB			2.5V25A							
Power Supply : DC48V										
Limit1: [EN 55022] Class A(QP)										
Limit2: [EN 55022] Class A(Ave.)										
							Limit1(QP) Limit2(Ave.) VA(PEAK) VB(PEAK) VA(QP) VA(Ave.) VB(QP) VB(Ave.) DC48V 2.5V25A			
Frequency [MHz]	Meter Reading (Ave.) [dBuV]	Meter Reading (QP) [dBuV]	Factor [dB]	Level(Ave.) [dBuV]	Level(QP) [dBuV]	Line	Limit(Ave.) [dBuV]	Limit(QP) [dBuV]	Margin(Ave.) [dB]	Margin(QP) [dB]
16.2525	34.7	34.4	10.2	44.9	44.6	VA	60	73	15.1	28.4
0.407	31.8	33	9.9	41.7	42.9	VB	66	79	24.3	36.1
0.4349	18	23.9	9.9	27.9	33.8	VB	66	79	38.1	45.2
15.8464	35.4	35	10.2	45.6	45.2	VB	60	73	14.4	27.8

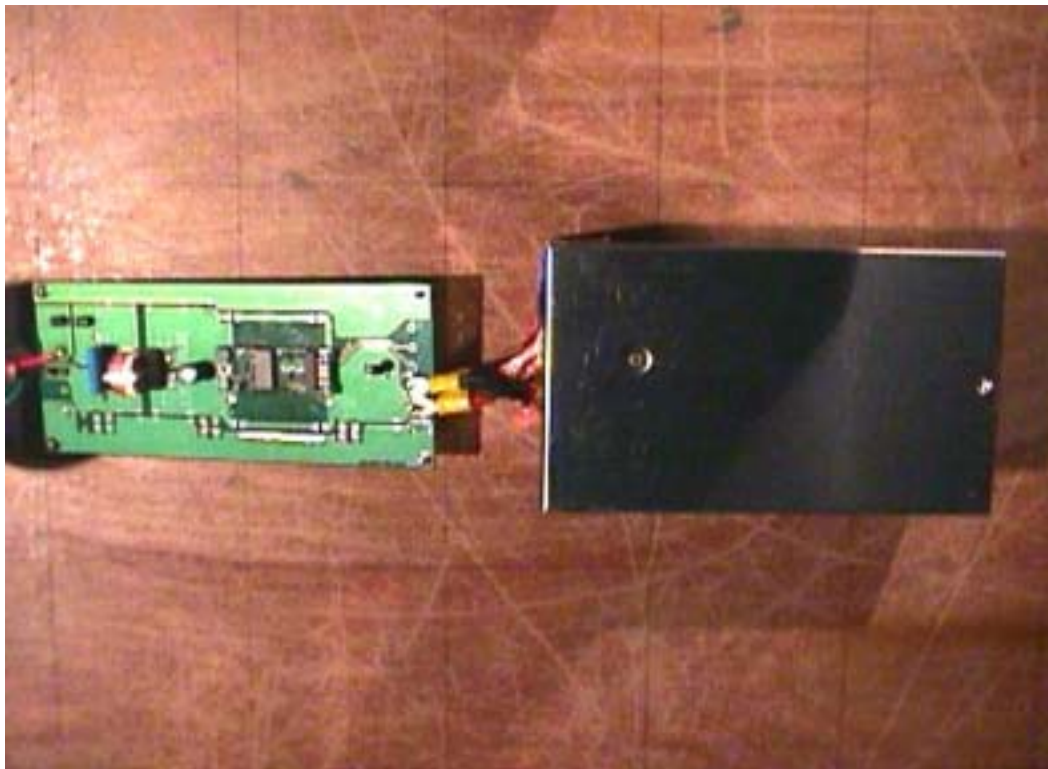
RADIATED EMISSION										
Model Name : CES48025-25			Temp. : 25							
Model No. :			Humi. : 45							
Serial No. :			Date : 2003/7/17 2:42							
Points : 4			Test Equip. : R3132,ESPC							
Detector : PEAK/QP			Comment : E.Nagata							
Polarization : Horizontal			2.5V25A							
Power Supply : DC48V										
Limit: [EN 55022] Class A<3m>										
							Limit(QP) Horizontal(PEAK) Vertical(PEAK) Horizontal(QP) DC48V 2.5V25A			
Frequency [MHz]	MeterReading (QP)[dBuV]	Ant. Type	Antenna Factor[dB/m]	Cable & Preamp[dB]	Level(QP) [dBuV/m]	Angle [°]	Height[cm]	Polar.	Limit [dBuV/m]	Margin [dB]
115.397	62	BL	10.8	-31.7	41.1	158	158	Hori.	50	8.9
123.932	62.2	BL	11	-31.7	41.5	163	116	Hori.	50	8.5
129.225	61.8	BL	11.2	-31.6	41.4	1	158	Hori.	50	8.6
135.308	62.6	BL	11	-31.6	42	4	148	Hori.	50	8



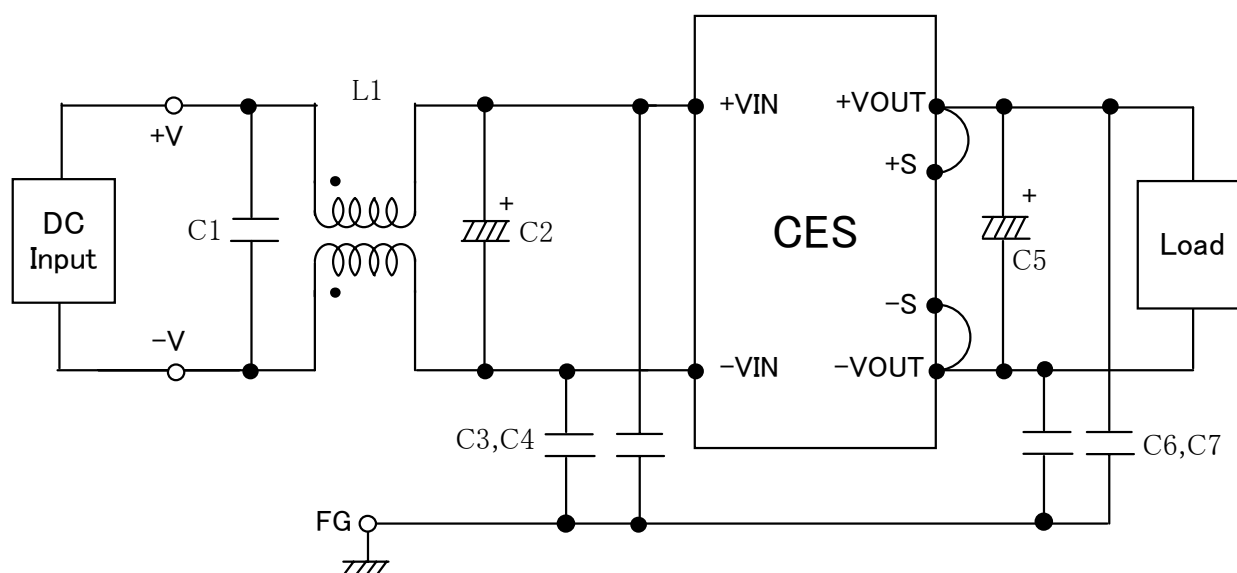
TEST : RASLATED EMISSION
Model Name : CES

Date 2003/7/16

○Photographs of Test Set-Up



○ Testing circuitry



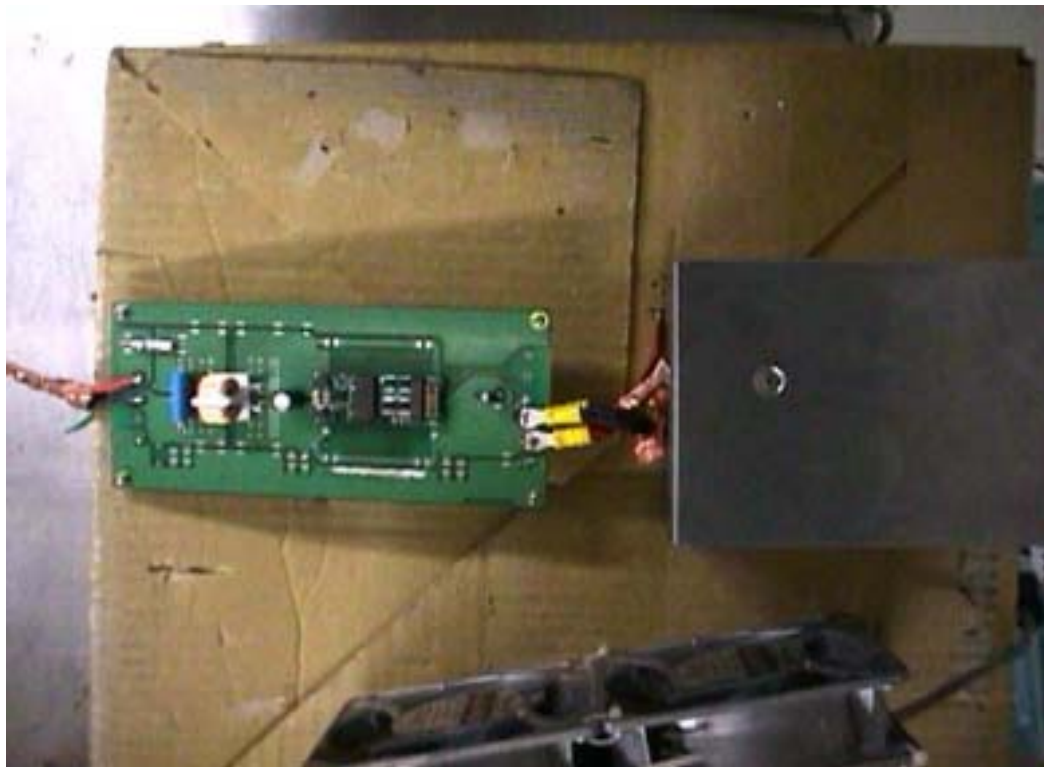
L1 : 1mH 5A Inductor
C1 : 2.2 μ F Film capacitor
C2 : 100V 33 μ F Electric capacitor
C3,4 : 630V 0.068 μ F Film capacitor
C5 : 10V 10 μ F Electric capacitor
C6,7 : 630V 0.033 μ F Film capacitor



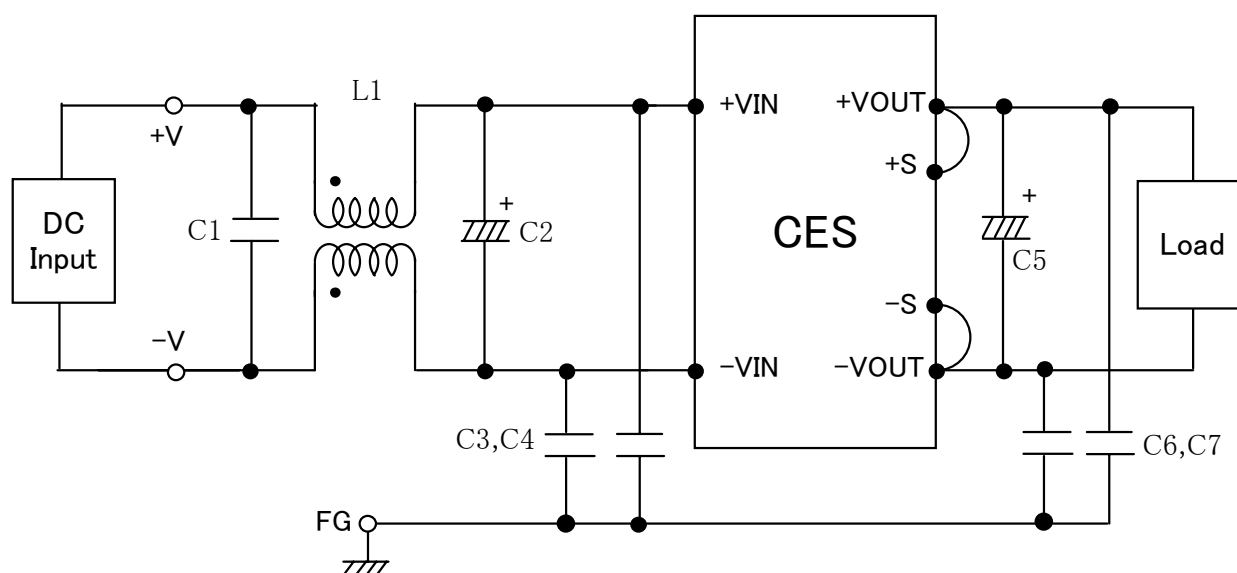
TEST : LINE CONDUCTION
Model Name : CES

Date 2003/7/16

○ Photographs of Test Set-Up



○ Testing circuitry



L1 : 1mH 5A Inductor
C1 : 2.2 μ F Film capacitor
C2 : 100V 33 μ F Electric capacitor
C3,4 : 630V 0.068 μ F Film capacitor
C5 : 10V 10 μ F Electric capacitor
C6,7 : 630V 0.033 μ F Film capacitor