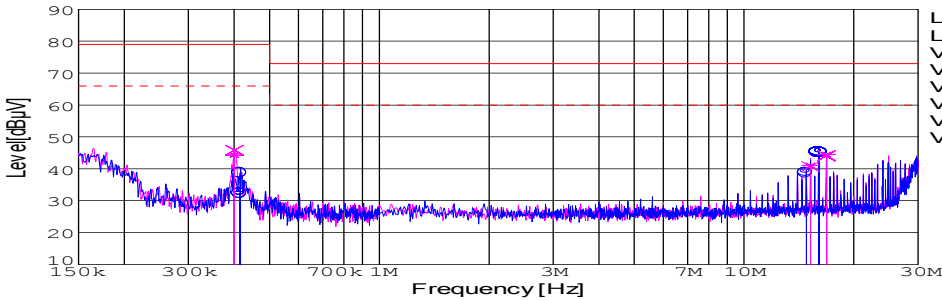
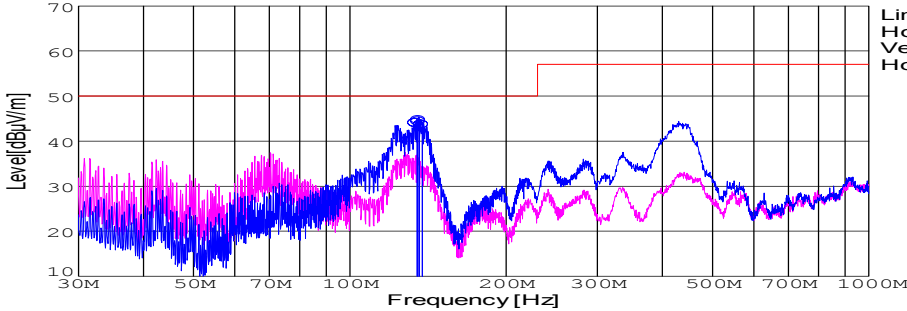


DATA SHEET							Date	16-Jul-03		
Model	CES48033-25						Temp.	25 degreeC		
Test	EMI Line conduction & Radiated emission						Humid.	45 %RH		
							Tested by	E.Nagata		
LINE CONDUCTION										
Model Name : CES48033-25			Temp. : 25							
Model No. :			Humi. : 45							
Serial No. :			Date : 2003/7/16 13:46							
Points : 6			Test Equip. : R3132,ESPC							
Detector : PEAK/QP/Ave.			Comment : E.Nagata							
Line Mode : VA/VB										
Power Supply : DC48V										
Limit1: [EN 55022] Class A(QP)										
Limit2: [EN 55022] Class A(Ave.)										
							Limit1(QP) Limit2(Ave.) VA(PEAK) VB(PEAK) VA(QP) VA(Ave.) VB(QP) VB(Ave.)			
							DC48V 3.3V 25A			
Frequency [MHz]	Meter Reading (Ave.) [dBuV]	Meter Reading (QP) [dBuV]	Factor [dB]	Level(Ave.) [dBuV]	Level(QP) [dBuV]	Line	Limit(Ave.) [dBuV]	Limit(QP) [dBuV]	Margin(Ave.) [dB]	Margin(QP) [dB]
0.4152	22.4	28.8	9.9	32.3	38.7	VA	66	79	33.7	40.3
14.8098	28.9	28.6	10.2	39.1	38.8	VA	60	73	20.9	34.2
16.0113	35.4	35.1	10.2	45.6	45.3	VA	60	73	14.4	27.7
0.4006	34.4	36	9.9	44.3	45.9	VB	66	79	21.7	33.1
15.2109	30.9	30.6	10.2	41.1	40.8	VB	60	73	18.9	32.2
16.8115	34.3	33.9	10.2	44.5	44.1	VB	60	73	15.5	28.9

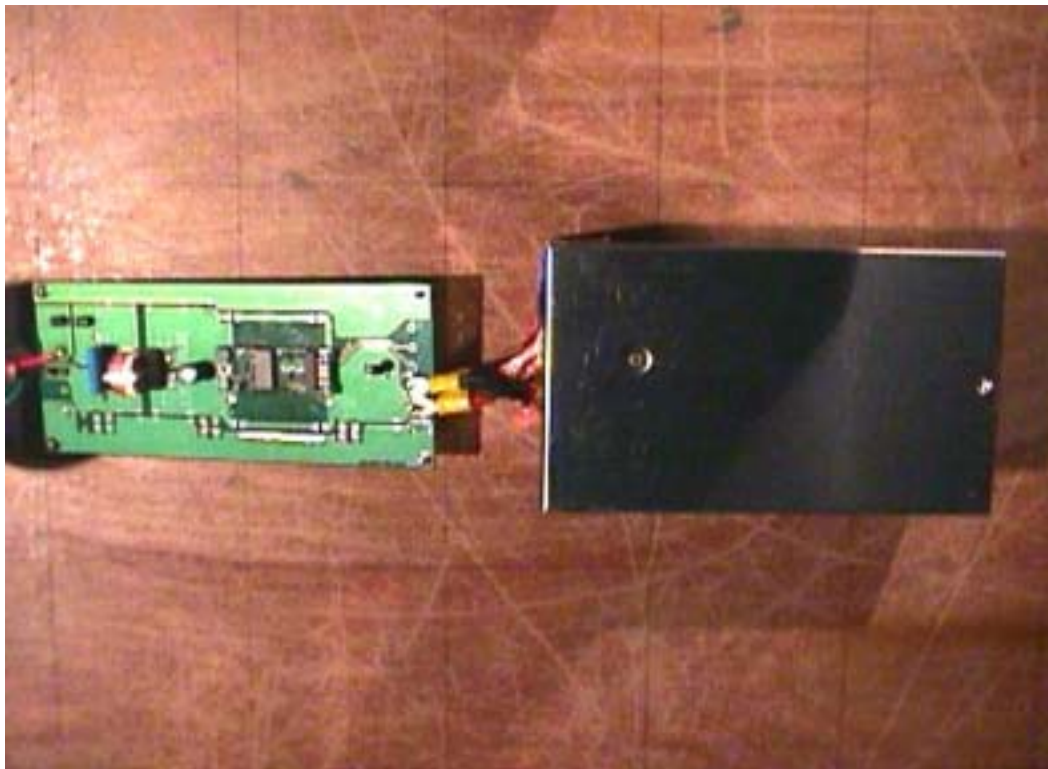
RADIATED EMISSION										
Model Name : CES48033-25			Temp. : 25							
Model No. :			Humi. : 45							
Serial No. :			Date : 2003/7/17 4:17							
Points : 4			Test Equip. : R3132,ESPC							
Detector : PEAK/QP			Comment : E.Nagata							
Polarization : Horizontal										
Power Supply : DC48V										
Limit: [EN 55022] Class A<3m>										
							Limit(QP) Horizontal(PEAK) Vertical(PEAK) Horizontal(QP)			
							DC48V 3.3V25A			
Frequency [MHz]	MeterReading (QP) [dBuV]	Ant. Type	Antenna Factor [dB/m]	Cable & Preamp [dB]	Level(QP) [dBuV/m]	Angle [°]	Height [cm]	Polar.	Limit [dBuV/m]	Margin [dB]
134.74	64.5	BL	11	-31.6	43.9	17	155	Hori.	50	6.1
135.965	64.9	BL	11	-31.6	44.3	17	159	Hori.	50	5.7
135.968	65.3	BL	11	-31.6	44.7	0	151	Hori.	50	5.3
137.942	64.2	BL	10.9	-31.6	43.5	358	160	Hori.	50	6.5



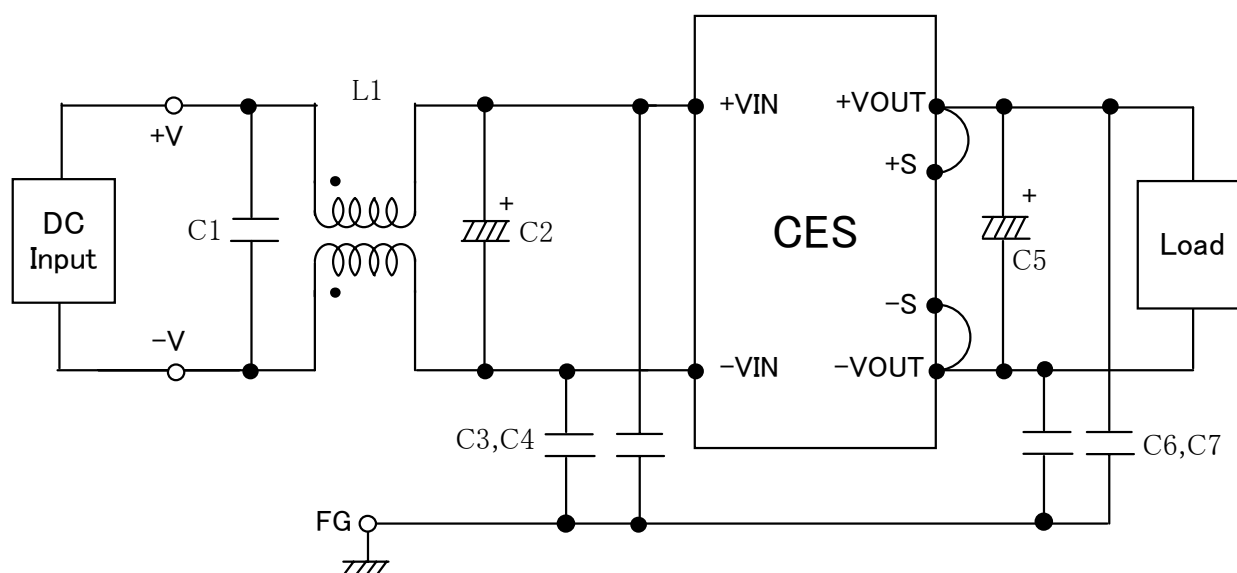
TEST : RASLATED EMISSION
Model Name : CES

Date 2003/7/16

○Photographs of Test Set-Up



○ Testing circuitry



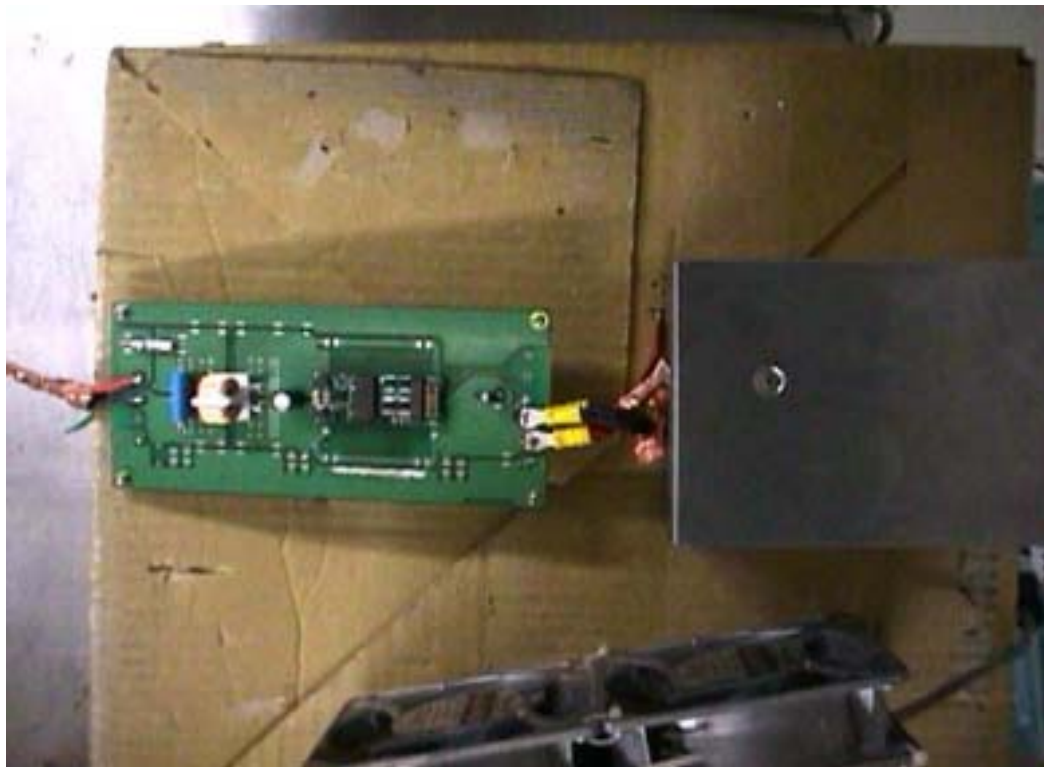
L1 : 1mH 5A Inductor
C1 : 2.2 μ F Film capacitor
C2 : 100V 33 μ F Electric capacitor
C3,4 : 630V 0.068 μ F Film capacitor
C5 : 10V 10 μ F Electric capacitor
C6,7 : 630V 0.033 μ F Film capacitor



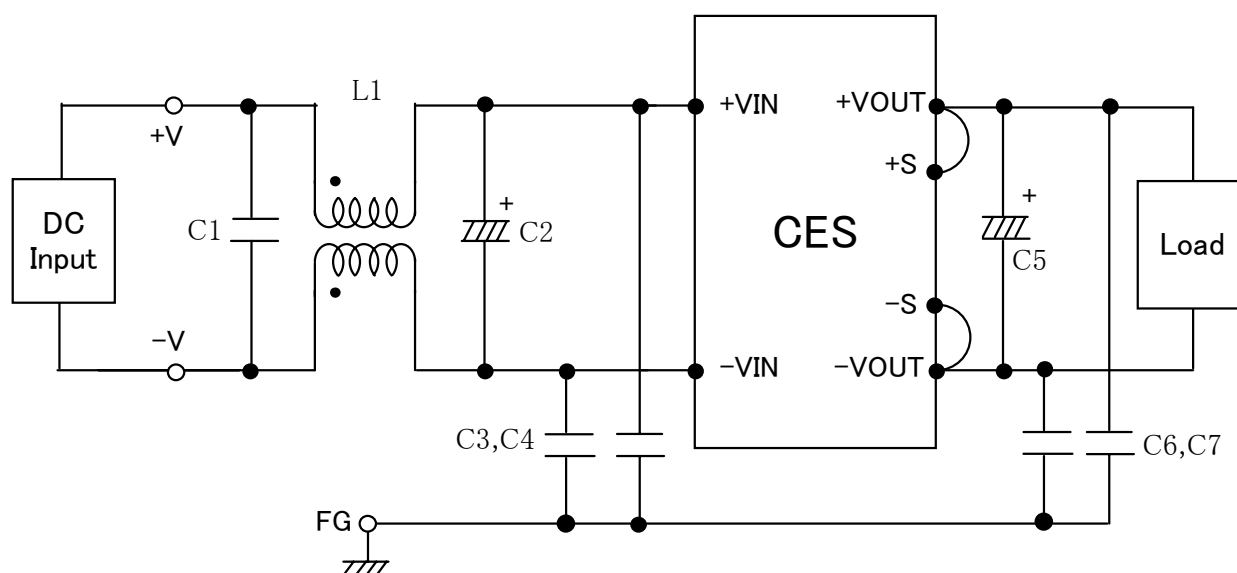
TEST : LINE CONDUCTION
Model Name : CES

Date 2003/7/16

○ Photographs of Test Set-Up



○ Testing circuitry



L1 : 1mH 5A Inductor
C1 : $2.2\mu\text{F}$ Film capacitor
C2 : 100V $33\mu\text{F}$ Electric capacitor
C3,4 : 630V $0.068\mu\text{F}$ Film capacitor
C5 : 10V $10\mu\text{F}$ Electric capacitor
C6,7 : 630V $0.033\mu\text{F}$ Film capacitor