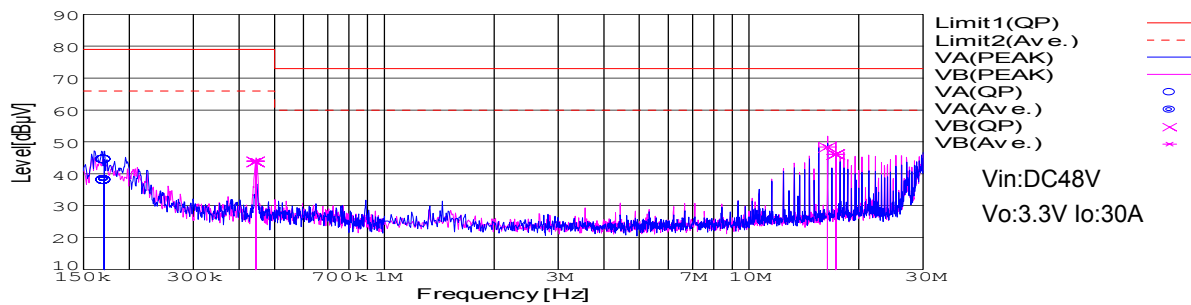
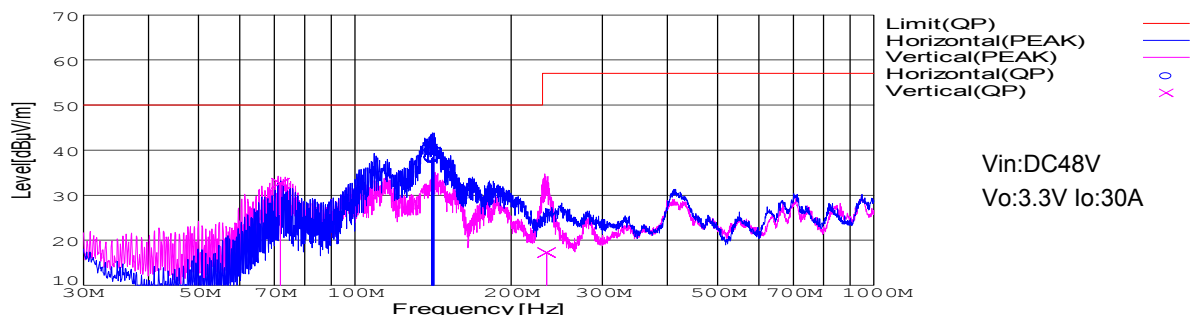


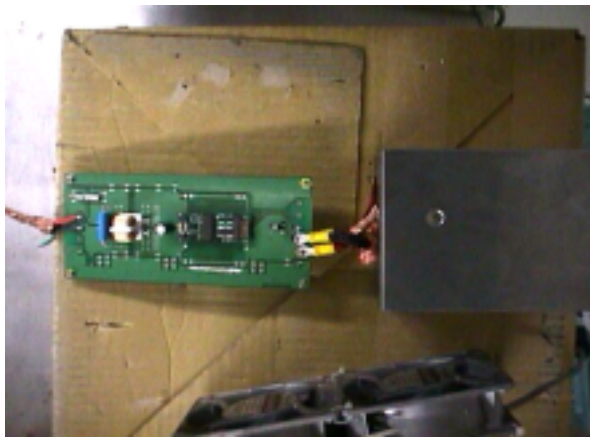
| DATA SHEET | | | | | | | Date | 06-Mar-07 | | |
|--|--|---------------------------|--------------------------|---------------------|--------------------|-----------|-----------------------------|------------------|-------------------|-----------------|
| Model | CES48033-30 | | | | | | Temp. | 25degC | | |
| Test | EMI Line conduction & Radiated emission | | | | | | Humid. | 45 %RH | | |
| | | | | | | | Tested by | T.Mizuhara | | |
| LINE CONDUCTION | | | | | | | | | | |
| Model Name : CES48033-30 | | | Temp. : 25degC | | | | | | | |
| Model No. : | | | Humi. : 45% | | | | | | | |
| Serial No. : | | | Date : 2007/3/5 17:48 | | | | | | | |
| Points : 4 | | | Test Equip. : R3132,ESPC | | | | | | | |
| Detector : PEAK/QP/Ave. | | | Load Line : | | | | | | | |
| Line Mode : VA/VB | | | Comment : | | | | | | | |
| Power Supply : DC 48V | | | | | | | | | | |
| Limit1: [EN 55022] Class A(QP) | | | | | | | | | | |
| Limit2: [EN 55022] Class A(Ave.) | | | | | | | | | | |
|  | | | | | | | Vin:DC48V Vo:3.3V Io:30A | | | |
| Frequency [MHz] | Meter Reading (Ave.) [dBuV] | Meter Reading (QP) [dBuV] | Factor [dB] | Level(Ave.) [dBuV] | Level(QP) [dBuV] | Line | Limit(Ave.) [dBuV] | Limit(QP) [dBuV] | Margin(Ave.) [dB] | Margin(QP) [dB] |
| 0.1708 | 28.3 | 34.6 | 9.8 | 38.1 | 44.4 | VA | 66 | 79 | 27.9 | 34.6 |
| 0.444 | 34.1 | 33.8 | 9.9 | 44 | 43.7 | VB | 66 | 79 | 22 | 35.3 |
| 16.3997 | 38.2 | 38.1 | 10.2 | 48.4 | 48.3 | VB | 60 | 73 | 11.6 | 24.7 |
| 17.2839 | 35.9 | 35.9 | 10.2 | 46.1 | 46.1 | VB | 60 | 73 | 13.9 | 26.9 |
| RADIATED EMISSION | | | | | | | | | | |
| Model Name : CES48033-30 | | | Temp. : 25degC | | | | | | | |
| Model No. : | | | Humi. : 45% | | | | | | | |
| Serial No. : | | | Date : 2007/3/6 18:20 | | | | | | | |
| Points : 5 | | | Test Equip. : R3132,ESPC | | | | | | | |
| Detector : PEAK/QP | | | Load Line : | | | | | | | |
| Polarization : Hori. & Vert. | | | Comment : | | | | | | | |
| Power Supply : DC 48V | | | | | | | | | | |
| Limit: [EN 55022] Class A<3m> | | | | | | | | | | |
|  | | | | | | | Vin:DC48V Vo:3.3V Io:30A | | | |
| Frequency [MHz] | Meter Reading (QP) [dBuV] | Ant. Type | Antenna Factor [dB/m] | Cable & Preamp [dB] | Level(QP) [dBuV/m] | Angle [°] | Height [cm] | Polar. | Limit [dBuV/m] | Margin [dB] |
| 141.915 | 57.2 | BL | 10.8 | -28.2 | 39.8 | 12 | 144 | Hori. | 50 | 10.2 |
| 140.652 | 55.6 | BL | 10.8 | -28.2 | 38.2 | 21 | 160 | Hori. | 50 | 11.8 |
| 141.079 | 55.9 | BL | 10.8 | -28.2 | 38.5 | 31 | 158 | Hori. | 50 | 11.5 |
| 71.867 | 53.2 | BL | 5.8 | -26.3 | 32.7 | 107 | 110 | Vert. | 50 | 17.3 |
| 234.088 | 38 | BL | 10.3 | -31 | 17.3 | 274 | 134 | Vert. | 57 | 39.7 |



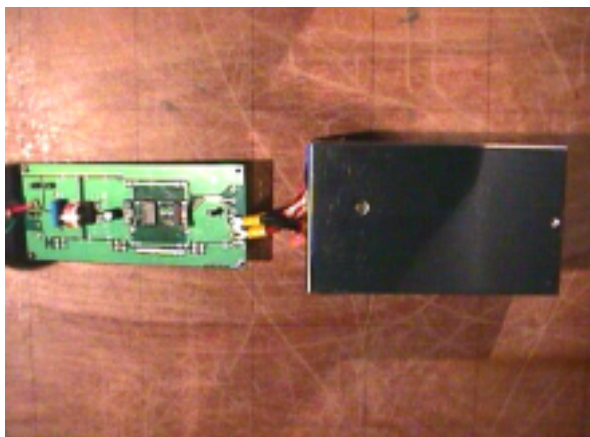
TEST :EMI
Model Name :CES48033-30

Date 2007/3/7

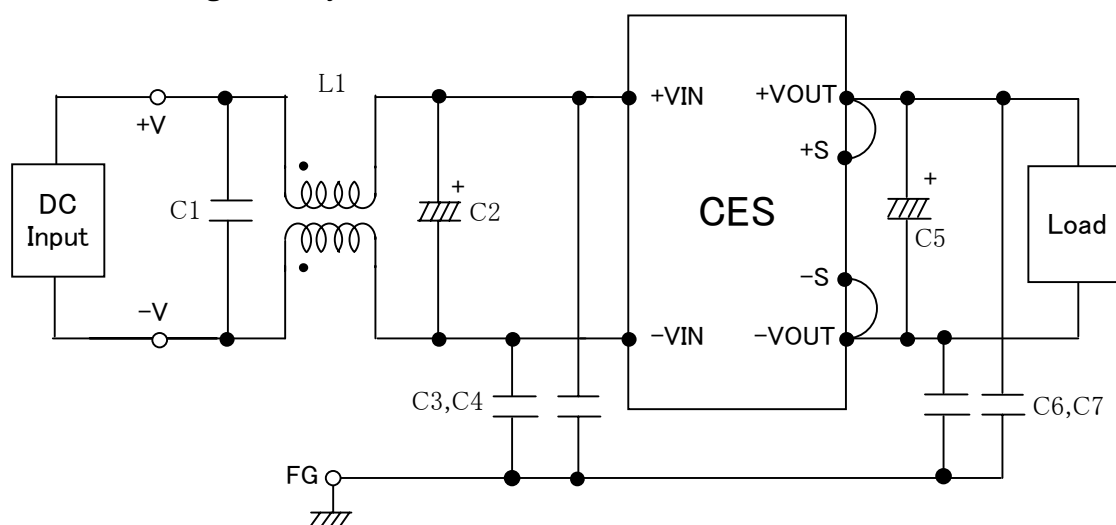
○Photographs of Test Set-Up
LINE CONDUCTION



RADIATED EMISSION



○ Testing circuitry



L1 : 1mH 5A Inductor
C1 : 2.2 μ F Film capacitor
C2 : 100V 47 μ F Electric capacitor
C3,4 : 630V 0.068 μ F Film capacitor
C5 : 10V 10 μ F Electric capacitor
C6,7 : 630V 0.033 μ F Film capacitor