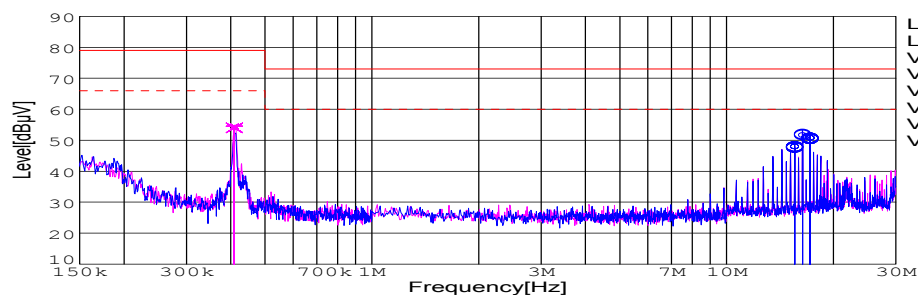


DATA SHEET		Date	21-Jan-05
Model	CES48050-16	Temp.	25 degreeC
Test	EMI Line conduction & Radiated emission	Humid.	45 %RH
		Tested by	Y.Okamoto

LINE CONDUCTION

Model Name : CES48050-16
Model No. :
Serial No. :
Points : 4
Detector : PEAK/QP/Ave.
Line Mode : VA/VB
Power Supply : DC 48V
Limit1: [EN 55022] Class A(QP)
Limit2: [EN 55022] Class A(Ave.)

Temp. : 25
Humi. : 45
Date : 2005/1/21 11:22
Test Equip. : R3132,ESPC
Comment : Y.Okamoto



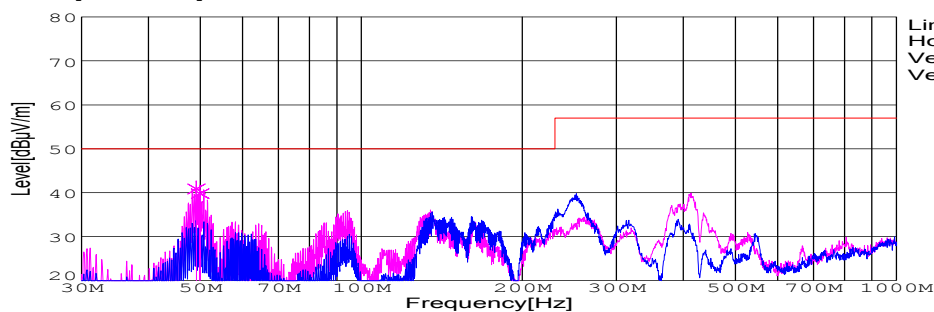
Limit1(QP) ———
Limit2(Ave.) - - -
VA(PEAK) ———
VB(PEAK) ———
VA(QP) ○
VA(Ave.) ⊗
VB(QP) ×
VB(Ave.) ⊕
Vin:DC48V
Vo:5V Io:16A

Frequency [MHz]	Meter Reading (Ave.)[dBuV]	Meter Reading (QP)[dBuV]	Factor [dB]	Level(Ave.) [dBuV]	Level(QP) [dBuV]	Line	Limit(Ave.) [dBuV]	Limit(QP) [dBuV]	Margin(Ave.) [dB]	Margin(QP) [dB]
15.5566	37.5	37.9	10.2	47.7	48.1	VA	60	73	11.9	25.3
16.3767	41.9	41.5	10.2	52.1	51.7	VA	60	73	8.3	20.9
17.1962	40.3	40.6	10.2	50.5	50.8	VA	60	73	9.2	22.5
0.4097	44.1	44.6	9.9	54	54.5	VB	66	79	11.5	25

RADIATED EMISSION

Model Name : CES48050-16
Model No. :
Serial No. :
Points : 2
Detector : PEAK/QP
Polarization : Vertical
Power Supply : DC 48V
Limit: [EN 55022] Class A<3m>

Temp. : 25
Humi. : 45
Date : 2005/2/11 10:31
Test Equip. : R3132,ESPC
Load Line :
Comment : Y.Okamoto



Limit(QP) ———
Horizontal(PEAK) ———
Vertical(PEAK) ———
Vertical(QP) ×
Vin:DC48V
Vo:5V Io:16A

Frequency [MHz]	MeterReading (QP)[dBuV]	Ant. Type	Antenna Factor[dB/m]	Cable & Preamp[dB]	Level(QP) [dBuV/m]	Angle [°]	Height[cm]	Polar.	Limit [dBuV/m]	Margin [dB]
49.16	64.8	BL	8.1	-32.1	40.8	91	100	Vert.	50	9.2
49.975	64.2	BL	7.7	-32.1	39.8	87	130	Vert.	50	10.2

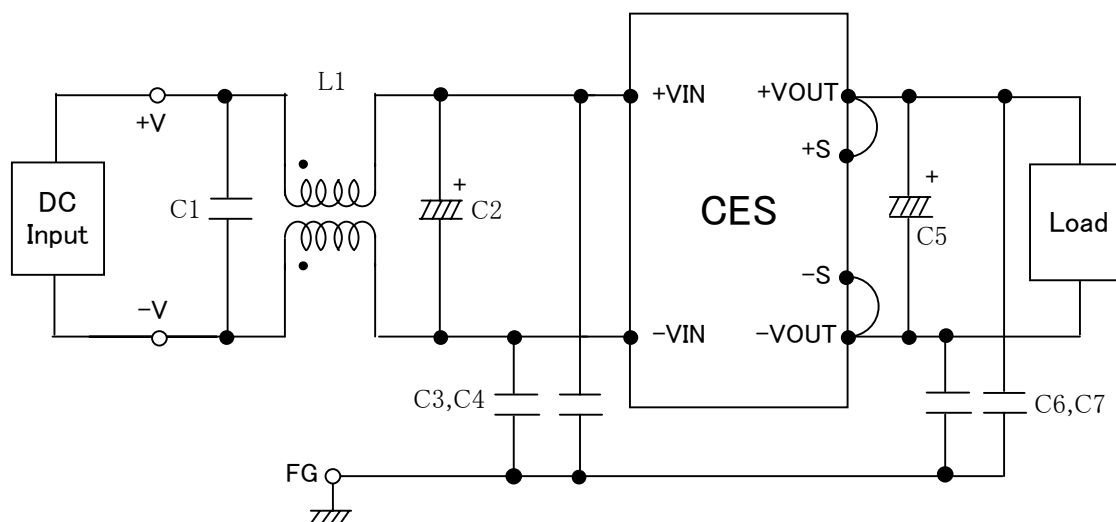
TEST : Line conduction
Model Name : CES

Date 2005/1/21

○ Photographs of Test Set-Up



○ Testing circuitry

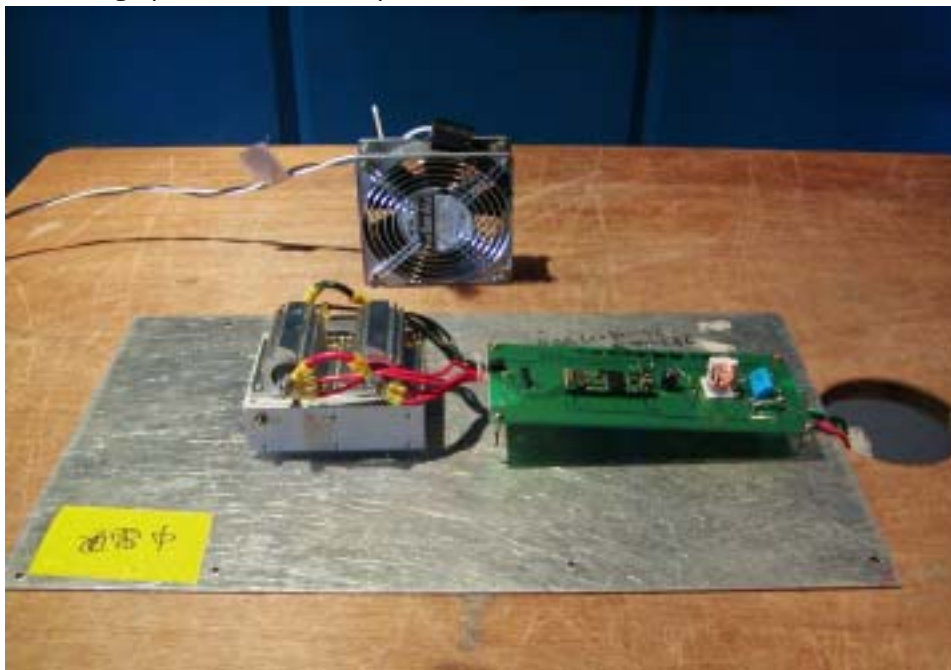


- L1 : 1mH 5A Inductor
- C1 : 2.2 μ F Film capacitor
- C2 : 100V 33 μ F Electric capacitor
- C3,4 : 630V 0.068 μ F Film capacitor
- C5 : 10V 10 μ F Electric capacitor
- C6,7 : 630V 0.033 μ F Film capacitor

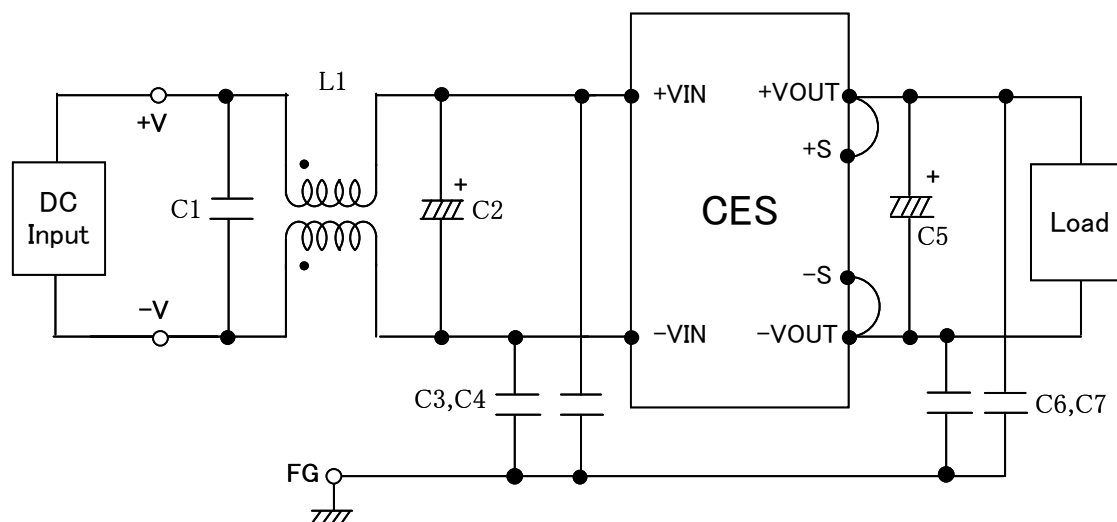
TEST : Radiated emission
Model Name : CES

Date 2005/1/21

○ Photographs of Test Set-Up



○ Testing circuitry



- L1 : 1mH 5A Inductor
- C1 : 2.2 μ F Film capacitor
- C2 : 100V 33 μ F Electric capacitor
- C3,4 : 630V 0.068 μ F Film capacitor
- C5 : 10V 10 μ F Electric capacitor
- C6,7 : 630V 0.033 μ F Film capacitor