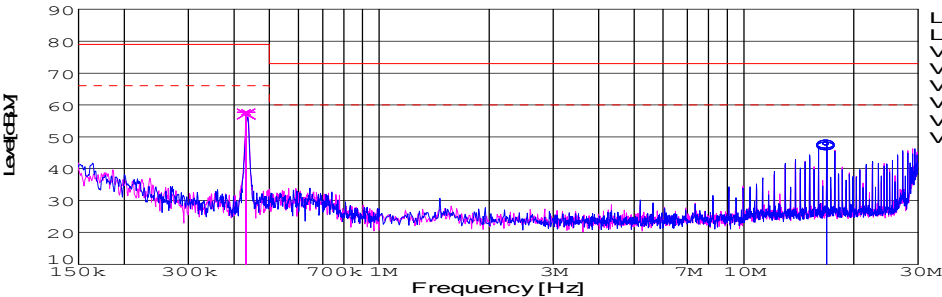
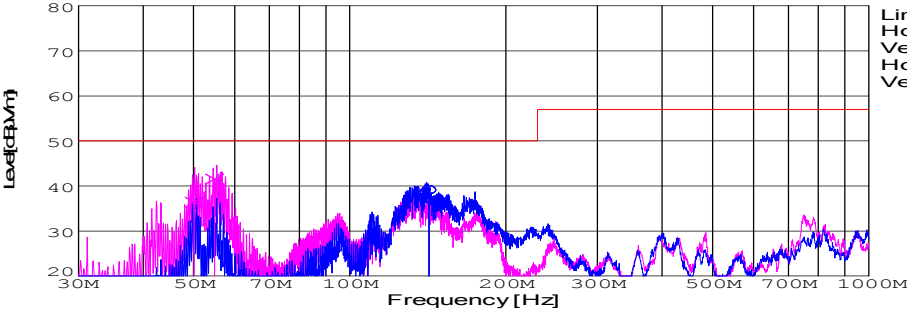


DATA SHEET							Date	19-Mar-07																																														
Model	CES48050-20						Temp.	25degC																																														
Test	EMI Line conduction & Radiated emission						Humid.	45 %RH																																														
							Tested by	T.Mizuhara																																														
LINE CONDUCTION																																																						
Model Name			CES48050-20		Temp.		25degC																																															
Model No.					Humi.		45%																																															
Serial No.					Date		2007/3/7 11:14																																															
Points			2		Test Equip.		R3132,ESPC																																															
Detector			PEAK/QP/Ave.		Load Line																																																	
Line Mode			VA/VB		Comment																																																	
Power Supply			DC 48V																																																			
Limit1: [EN 55022]			Class A(QP)																																																			
Limit2: [EN 55022]			Class A(Ave.)																																																			
							Limit1(QP)		—																																													
							Limit2(Ave.)		- - -																																													
							VA(PEAK)		—																																													
							VB(PEAK)		—																																													
							VA(QP)		○																																													
							VA(Ave.)		○																																													
							VB(QP)		×																																													
							VB(Ave.)		×																																													
							Vin:DC48V																																															
							Vo:5.0V Io:20A																																															
<table><tr><th>Frequency [MHz]</th><th>Meter Reading (Ave.) [dBuV]</th><th>Meter Reading (QP) [dBuV]</th><th>Factor [dB]</th><th>Level(Ave.) [dBuV]</th><th>Level(QP) [dBuV]</th><th>Line</th><th>Limit(Ave.) [dBuV]</th><th>Limit(QP) [dBuV]</th><th>Margin(Ave.) [dB]</th><th>Margin(QP) [dB]</th></tr><tr><td>16.8557</td><td>37.4</td><td>36.9</td><td>10.2</td><td>47.6</td><td>47.1</td><td>VA</td><td>60</td><td>73</td><td>12.4</td><td>25.9</td></tr><tr><td>0.4317</td><td>47.8</td><td>47.3</td><td>9.9</td><td>57.7</td><td>57.2</td><td>VB</td><td>66</td><td>79</td><td>8.3</td><td>21.8</td></tr></table>											Frequency [MHz]	Meter Reading (Ave.) [dBuV]	Meter Reading (QP) [dBuV]	Factor [dB]	Level(Ave.) [dBuV]	Level(QP) [dBuV]	Line	Limit(Ave.) [dBuV]	Limit(QP) [dBuV]	Margin(Ave.) [dB]	Margin(QP) [dB]	16.8557	37.4	36.9	10.2	47.6	47.1	VA	60	73	12.4	25.9	0.4317	47.8	47.3	9.9	57.7	57.2	VB	66	79	8.3	21.8											
Frequency [MHz]	Meter Reading (Ave.) [dBuV]	Meter Reading (QP) [dBuV]	Factor [dB]	Level(Ave.) [dBuV]	Level(QP) [dBuV]	Line	Limit(Ave.) [dBuV]	Limit(QP) [dBuV]	Margin(Ave.) [dB]	Margin(QP) [dB]																																												
16.8557	37.4	36.9	10.2	47.6	47.1	VA	60	73	12.4	25.9																																												
0.4317	47.8	47.3	9.9	57.7	57.2	VB	66	79	8.3	21.8																																												
RADIATED EMISSION																																																						
Model Name			CES48050-20		Temp.		25degC																																															
Model No.					Humi.		45%																																															
Serial No.					Date		2007/3/19 14:17																																															
Points			3		Test Equip.		R3132,ESPC																																															
Detector			PEAK/QP		Load Line																																																	
Polarization			Hori. & Vert.		Comment																																																	
Power Supply			DC 48V																																																			
Limit: [EN 55022]			Class A<3m>																																																			
							Limit(QP)		—																																													
							Horizontal(PEAK)		—																																													
							Vertical(PEAK)		—																																													
							Horizontal(QP)		○																																													
							Vertical(QP)		×																																													
							Vin:DC48V																																															
							Vo:5.0V Io:20A																																															
<table><tr><th>Frequency [MHz]</th><th>MeterReading (QP) [dBuV]</th><th>Ant. Type</th><th>Antenna Factor [dB/m]</th><th>Cable &amp; Preamp [dB]</th><th>Level(QP) [dBuV/m]</th><th>Angle [°]</th><th>Height [cm]</th><th>Polar.</th><th>Limit [dBuV/m]</th><th>Margin [dB]</th></tr><tr><td>142.212</td><td>56.3</td><td>BL</td><td>10.8</td><td>-28.2</td><td>38.9</td><td>357</td><td>158</td><td>Hori.</td><td>50</td><td>11.1</td></tr><tr><td>54.886</td><td>61.9</td><td>BL</td><td>5.7</td><td>-26.1</td><td>41.5</td><td>89</td><td>136</td><td>Vert.</td><td>50</td><td>8.5</td></tr><tr><td>50.119</td><td>55.7</td><td>BL</td><td>7.7</td><td>-27</td><td>36.4</td><td>139</td><td>134</td><td>Vert.</td><td>50</td><td>13.6</td></tr></table>											Frequency [MHz]	MeterReading (QP) [dBuV]	Ant. Type	Antenna Factor [dB/m]	Cable & Preamp [dB]	Level(QP) [dBuV/m]	Angle [°]	Height [cm]	Polar.	Limit [dBuV/m]	Margin [dB]	142.212	56.3	BL	10.8	-28.2	38.9	357	158	Hori.	50	11.1	54.886	61.9	BL	5.7	-26.1	41.5	89	136	Vert.	50	8.5	50.119	55.7	BL	7.7	-27	36.4	139	134	Vert.	50	13.6
Frequency [MHz]	MeterReading (QP) [dBuV]	Ant. Type	Antenna Factor [dB/m]	Cable & Preamp [dB]	Level(QP) [dBuV/m]	Angle [°]	Height [cm]	Polar.	Limit [dBuV/m]	Margin [dB]																																												
142.212	56.3	BL	10.8	-28.2	38.9	357	158	Hori.	50	11.1																																												
54.886	61.9	BL	5.7	-26.1	41.5	89	136	Vert.	50	8.5																																												
50.119	55.7	BL	7.7	-27	36.4	139	134	Vert.	50	13.6																																												



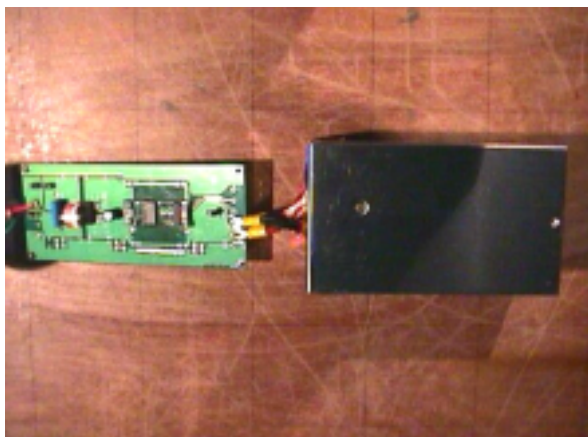
TEST :EMI  
Model Name :CES48050-20

Date 2007/3/19

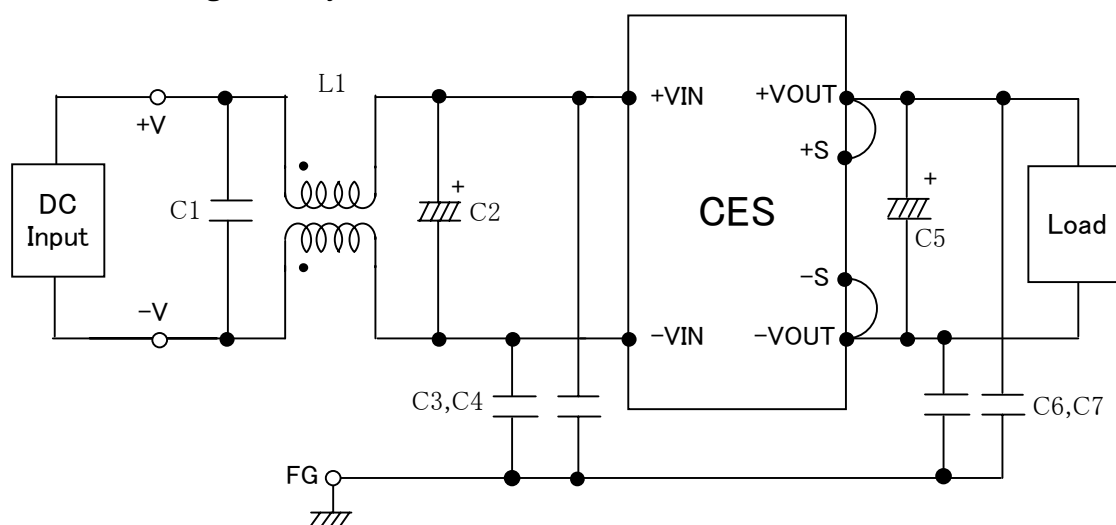
○Photographs of Test Set-Up  
LINE CONDUCTION



RADIATED EMISSION



○ Testing circuitry



L1 : 1mH 5A Inductor  
C1 : 2.2  $\mu$  F Film capacitor  
C2 : 100V 47  $\mu$  F Electric capacitor  
C3,4 : 630V 0.068  $\mu$  F Film capacitor  
C5 : 10V 10  $\mu$  F Electric capacitor  
C6,7 : 630V 0.033  $\mu$  F Film capacitor