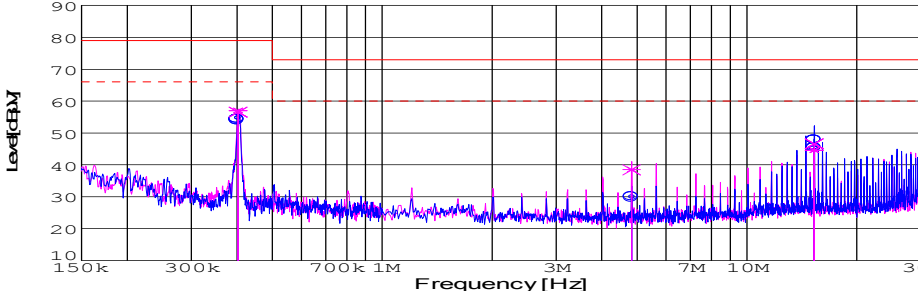
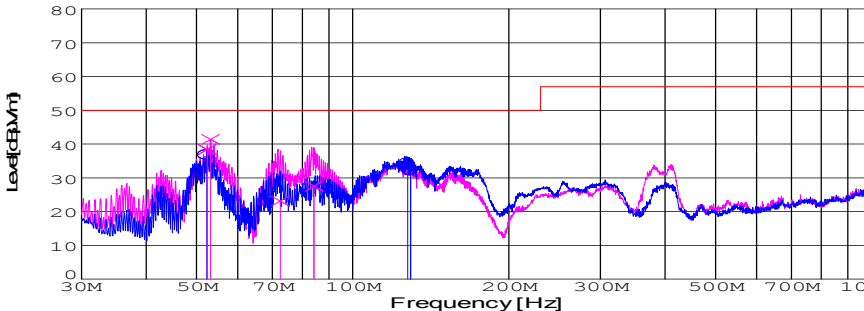
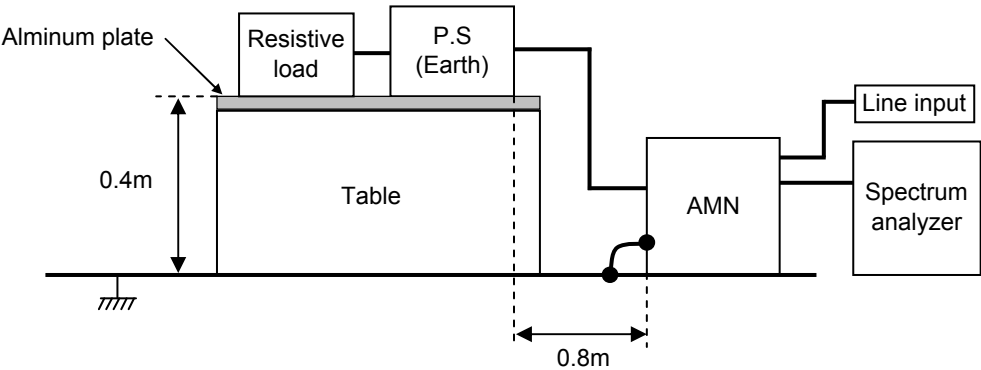


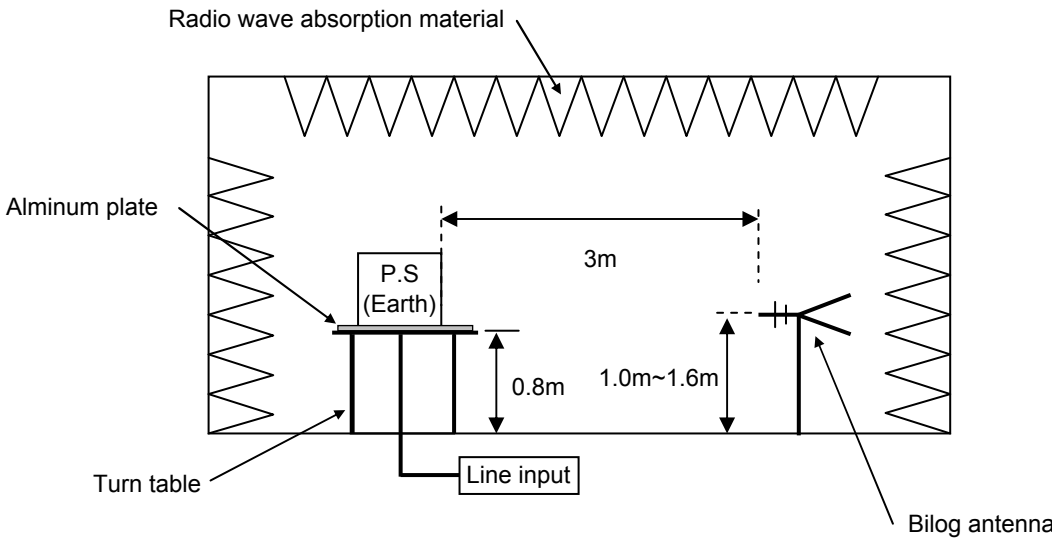
DATA SHEET							Date	11-Oct-08																																																																															
Model	CES48050-20P						Temp.	25 degreeC																																																																															
Test	EMI Line conduction & Radiated emission						Humid.	45 %RH																																																																															
							Tested by	J.Hatagishi																																																																															
LINE CONDUCTION																																																																																							
Model Name			CES48050-20P		Temp.		25degC																																																																																
Model No.					Humi.		45%																																																																																
Serial No.					Date		2008/10/11 16:22																																																																																
Points			3		Test Equip.		R3132,ESPC																																																																																
Detector			PEAK/QP/Ave.		Load Line																																																																																		
Line Mode			VA/VB		Comment																																																																																		
Power Supply																																																																																							
Limit1: [EN 55022]			Class A(QP)																																																																																				
Limit2: [EN 55022]			Class A(Ave.)																																																																																				
							Limit1(QP)		—																																																																														
							Limit2(Ave.)		- - -																																																																														
							VA(PEAK)		—																																																																														
							VB(PEAK)		—																																																																														
							VA(QP)		o																																																																														
							VA(Ave.)		o																																																																														
							VB(QP)		x																																																																														
							VB(Ave.)		x																																																																														
							Vin:DC48V																																																																																
							Vo:5.0V Io:20A																																																																																
<table><tr><th>Frequency [MHz]</th><th>Meter Reading (Ave.) [dBuV]</th><th>Meter Reading (QP) [dBuV]</th><th>Factor [dB]</th><th>Level(Ave.) [dBuV]</th><th>Level(QP) [dBuV]</th><th>Line</th><th>Limit(Ave.) [dBuV]</th><th>Limit(QP) [dBuV]</th><th>Margin(Ave.) [dB]</th><th>Margin(QP) [dB]</th></tr><tr><td>0.4028</td><td>44.6</td><td>44.1</td><td>9.9</td><td>54.5</td><td>54</td><td>VA</td><td>66</td><td>79</td><td>11.5</td><td>25</td></tr><tr><td>4.8325</td><td>20</td><td>19.8</td><td>10</td><td>30</td><td>29.8</td><td>VA</td><td>60</td><td>73</td><td>30</td><td>43.2</td></tr><tr><td>15.2914</td><td>35.1</td><td>37.8</td><td>10.2</td><td>45.3</td><td>48</td><td>VA</td><td>60</td><td>73</td><td>14.7</td><td>25</td></tr><tr><td>0.4027</td><td>47.1</td><td>46.6</td><td>9.9</td><td>57</td><td>56.5</td><td>VB</td><td>66</td><td>79</td><td>9</td><td>22.5</td></tr><tr><td>4.8284</td><td>28.5</td><td>28.4</td><td>10</td><td>38.5</td><td>38.4</td><td>VB</td><td>60</td><td>73</td><td>21.5</td><td>34.6</td></tr><tr><td>15.2934</td><td>34.4</td><td>36.4</td><td>10.2</td><td>44.6</td><td>46.6</td><td>VB</td><td>60</td><td>73</td><td>15.4</td><td>26.4</td></tr></table>											Frequency [MHz]	Meter Reading (Ave.) [dBuV]	Meter Reading (QP) [dBuV]	Factor [dB]	Level(Ave.) [dBuV]	Level(QP) [dBuV]	Line	Limit(Ave.) [dBuV]	Limit(QP) [dBuV]	Margin(Ave.) [dB]	Margin(QP) [dB]	0.4028	44.6	44.1	9.9	54.5	54	VA	66	79	11.5	25	4.8325	20	19.8	10	30	29.8	VA	60	73	30	43.2	15.2914	35.1	37.8	10.2	45.3	48	VA	60	73	14.7	25	0.4027	47.1	46.6	9.9	57	56.5	VB	66	79	9	22.5	4.8284	28.5	28.4	10	38.5	38.4	VB	60	73	21.5	34.6	15.2934	34.4	36.4	10.2	44.6	46.6	VB	60	73	15.4	26.4
Frequency [MHz]	Meter Reading (Ave.) [dBuV]	Meter Reading (QP) [dBuV]	Factor [dB]	Level(Ave.) [dBuV]	Level(QP) [dBuV]	Line	Limit(Ave.) [dBuV]	Limit(QP) [dBuV]	Margin(Ave.) [dB]	Margin(QP) [dB]																																																																													
0.4028	44.6	44.1	9.9	54.5	54	VA	66	79	11.5	25																																																																													
4.8325	20	19.8	10	30	29.8	VA	60	73	30	43.2																																																																													
15.2914	35.1	37.8	10.2	45.3	48	VA	60	73	14.7	25																																																																													
0.4027	47.1	46.6	9.9	57	56.5	VB	66	79	9	22.5																																																																													
4.8284	28.5	28.4	10	38.5	38.4	VB	60	73	21.5	34.6																																																																													
15.2934	34.4	36.4	10.2	44.6	46.6	VB	60	73	15.4	26.4																																																																													
RADIATED EMISSION																																																																																							
Model Name			CES48050-20P		Temp.		25degC																																																																																
Model No.					Humi.		45%																																																																																
Serial No.					Date		2008/10/11 15:33																																																																																
Points			6		Test Equip.		R3132,ESPC																																																																																
Detector			PEAK/QP		Load Line																																																																																		
Polarization			Hori. & Vert.		Comment																																																																																		
Power Supply																																																																																							
Limit: [EN 55022]			Class A<3m>																																																																																				
							Limit(QP)		—																																																																														
							Horizontal(PEAK)		—																																																																														
							Vertical(PEAK)		—																																																																														
							Horizontal(QP)		o																																																																														
							Vertical(QP)		x																																																																														
							Vin:DC48V																																																																																
							Vo:5.0V Io:20A																																																																																
<table><tr><th>Frequency [MHz]</th><th>MeterReading (QP) [dBuV]</th><th>Ant. Type</th><th>Antenna Factor [dB/m]</th><th>Cable & Preamp [dB]</th><th>Level(QP) [dBuV/m]</th><th>Angle [°]</th><th>Height [cm]</th><th>Polar.</th><th>Limit [dBuV/m]</th><th>Margin [dB]</th></tr><tr><td>52.369</td><td>62.1</td><td>BL</td><td>6.7</td><td>-32.1</td><td>36.7</td><td>359</td><td>119</td><td>Hori.</td><td>50</td><td>13.3</td></tr><tr><td>127.715</td><td>54.9</td><td>BL</td><td>11.1</td><td>-31.6</td><td>34.4</td><td>145</td><td>152</td><td>Hori.</td><td>50</td><td>15.6</td></tr><tr><td>129.285</td><td>52.4</td><td>BL</td><td>11.2</td><td>-31.6</td><td>32</td><td>128</td><td>149</td><td>Hori.</td><td>50</td><td>18</td></tr><tr><td>52.42</td><td>63.8</td><td>BL</td><td>6.7</td><td>-32.1</td><td>38.4</td><td>223</td><td>123</td><td>Vert.</td><td>50</td><td>11.6</td></tr><tr><td>53.211</td><td>67.2</td><td>BL</td><td>6.3</td><td>-32.1</td><td>41.4</td><td>241</td><td>128</td><td>Vert.</td><td>50</td><td>8.6</td></tr></table>											Frequency [MHz]	MeterReading (QP) [dBuV]	Ant. Type	Antenna Factor [dB/m]	Cable & Preamp [dB]	Level(QP) [dBuV/m]	Angle [°]	Height [cm]	Polar.	Limit [dBuV/m]	Margin [dB]	52.369	62.1	BL	6.7	-32.1	36.7	359	119	Hori.	50	13.3	127.715	54.9	BL	11.1	-31.6	34.4	145	152	Hori.	50	15.6	129.285	52.4	BL	11.2	-31.6	32	128	149	Hori.	50	18	52.42	63.8	BL	6.7	-32.1	38.4	223	123	Vert.	50	11.6	53.211	67.2	BL	6.3	-32.1	41.4	241	128	Vert.	50	8.6											
Frequency [MHz]	MeterReading (QP) [dBuV]	Ant. Type	Antenna Factor [dB/m]	Cable & Preamp [dB]	Level(QP) [dBuV/m]	Angle [°]	Height [cm]	Polar.	Limit [dBuV/m]	Margin [dB]																																																																													
52.369	62.1	BL	6.7	-32.1	36.7	359	119	Hori.	50	13.3																																																																													
127.715	54.9	BL	11.1	-31.6	34.4	145	152	Hori.	50	15.6																																																																													
129.285	52.4	BL	11.2	-31.6	32	128	149	Hori.	50	18																																																																													
52.42	63.8	BL	6.7	-32.1	38.4	223	123	Vert.	50	11.6																																																																													
53.211	67.2	BL	6.3	-32.1	41.4	241	128	Vert.	50	8.6																																																																													

DATA SHEET		Date	11-Oct-08
Model	Circuit used for measurement	Temp.	25 degreeC
Test	EMI Line conduction & Radiated emission	Humid.	45 %RH
		Tested by	J.Hatagishi

1. Line conduction



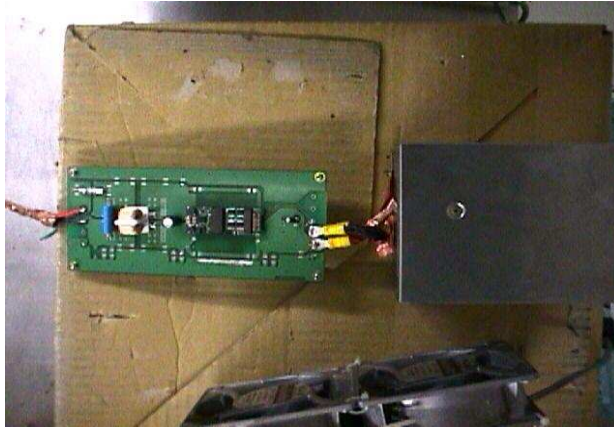
2. Radiated emission



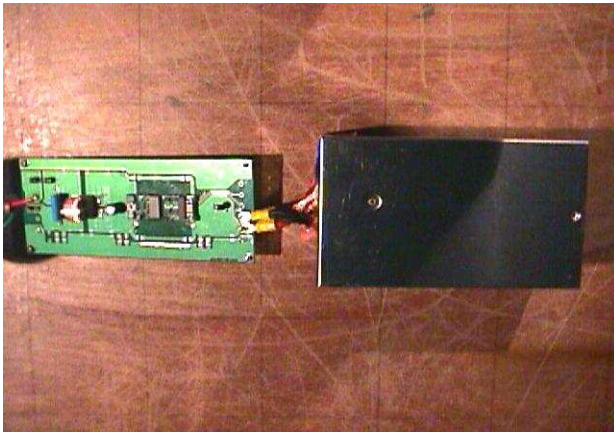
TEST : EMI
Model Name : CES48050-20P

Date 2008/10/11

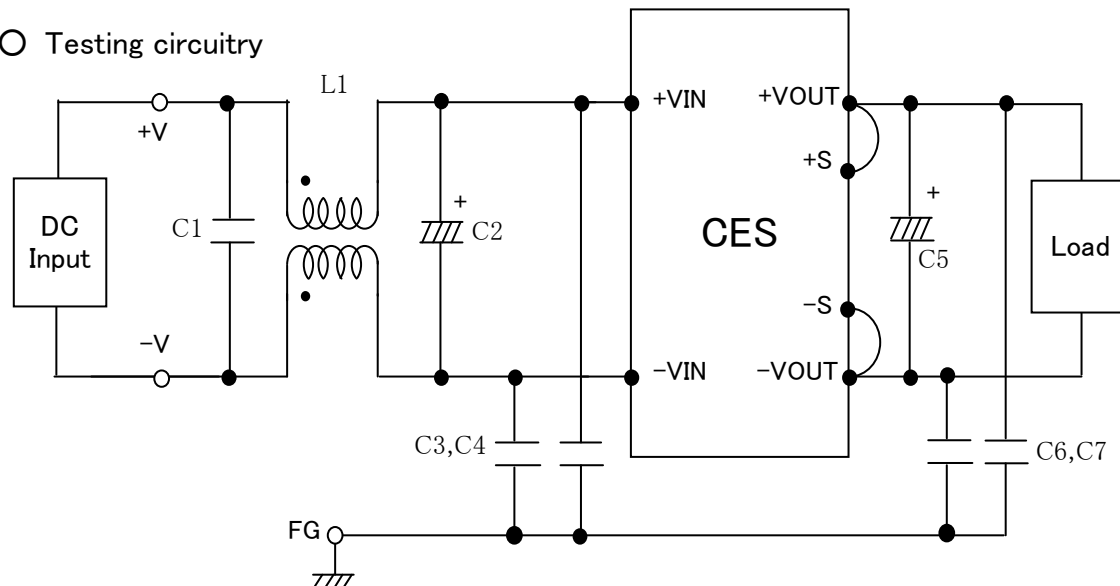
○ Photographs of Test Set-Up
LINE CONDUCTION



RADIATED EMISSION



○ Testing circuitry



L1 : 1mH 5A Inductor
C1 : 2.2 μ F Film capacitor
C2 : 100V 47 μ F Electric capacitor
C3,4 : 630V 0.068 μ F Film capacitor
C5 : 10V 10 μ F Electric capacitor
C6,7 : 630V 0.033 μ F Film capacitor