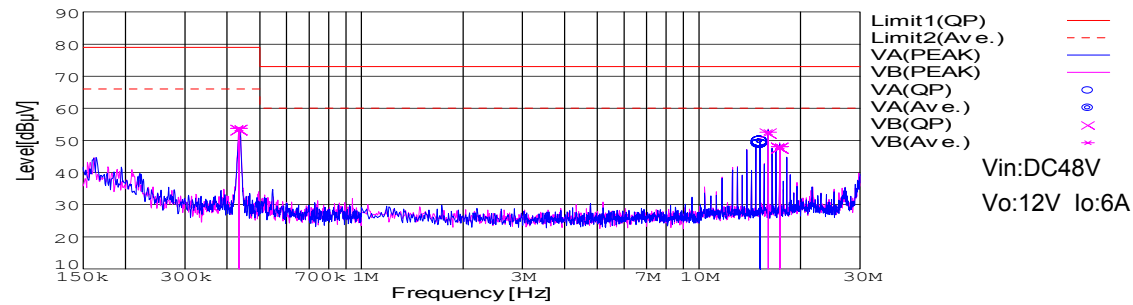


DATA SHEET		Date	28-Nov-05
Model	CES48120-6	Temp.	25 degreeC
Test	EMI Line conduction & Radiated emission	Humid.	45 %RH
		Tested by	T.Mizuhara

LINE CONDUCTION

Model Name : CES48120-6
 Model No. :
 Serial No. :
 Points : 4
 Detector : PEAK/QP/Ave.
 Line Mode : VA/VB
 Power Supply : DC 48V
 Limit1: [EN 55022] Class A(QP)
 Limit2: [EN 55022] Class A(Ave.)

Temp. : 25
 Humi. : 45
 Date : 2005/11/28 17:21
 Test Equip. : R3132,ESPC
 Load Line :
 Comment : T.Mizuhara

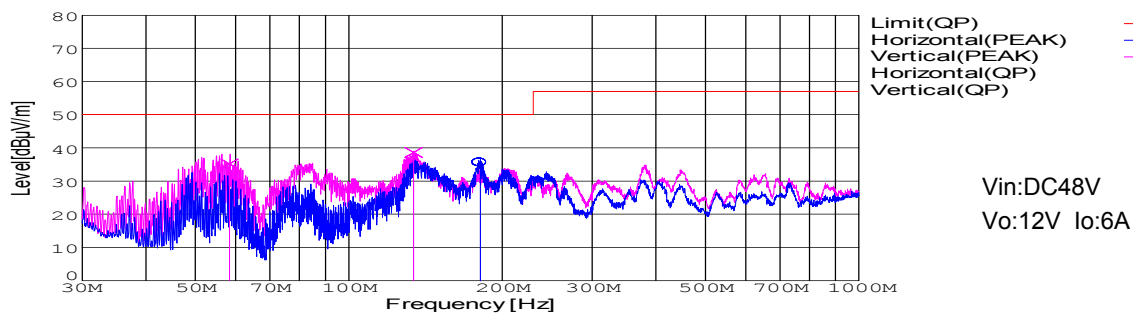


Frequency [MHz]	Meter Reading (Ave.) [dBuV]	Meter Reading (QP) [dBuV]	Factor [dB]	Level(Ave.) [dBuV]	Level(QP) [dBuV]	Line	Limit(Ave.) [dBuV]	Limit(QP) [dBuV]	Margin(Ave.) [dB]	Margin(QP) [dB]
15.1688	39.4	38.8	10.2	49.6	49	VA	60	73	10.4	24
0.4337	43.9	43.3	9.9	53.8	53.2	VB	66	79	12.2	25.8
16.0363	42.4	41.9	10.2	52.6	52.1	VB	60	73	7.4	20.9
17.3352	37.9	37.4	10.2	48.1	47.6	VB	60	73	11.9	25.4

RADIATED EMISSION

Model Name : CES48120-6
 Model No. :
 Serial No. :
 Points : 3
 Detector : PEAK/QP
 Polarization : Hori. & Vert.
 Power Supply : DC 48V
 Limit: [EN 55022] Class A<3m>

Temp. : 25
 Humi. : 45
 Date : 2005/11/28 18:01
 Test Equip. : R3132,ESPC
 Load Line :
 Comment : T.Mizuhara

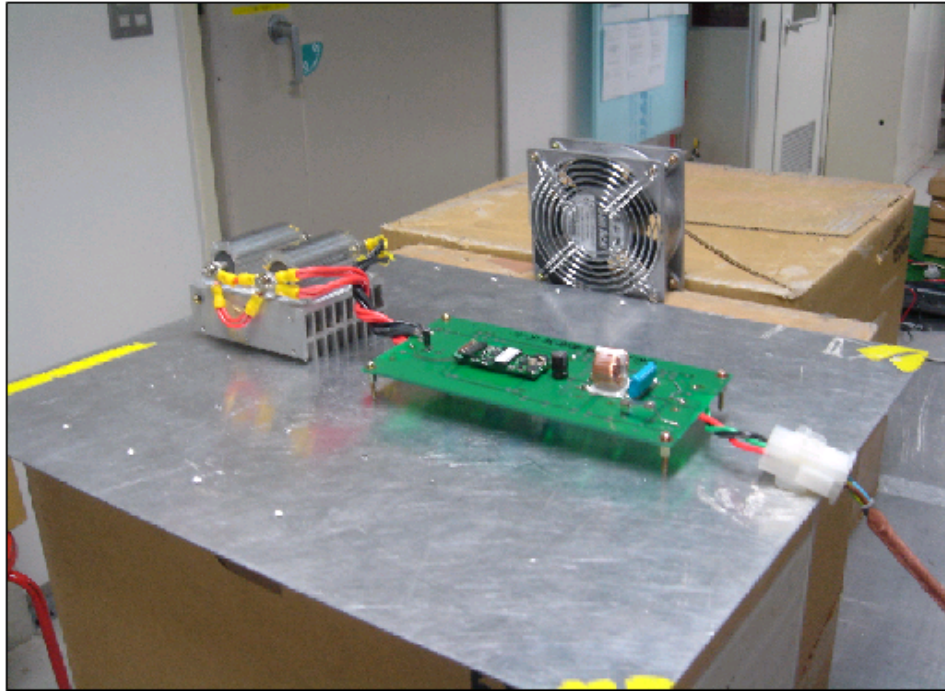


Frequency [MHz]	MeterReading (QP) [dBuV]	Ant. Type	Antenna Factor [dB/m]	Cable & Preamp [dB]	Level(QP) [dBuV/m]	Angle [°]	Height [cm]	Polar.	Limit [dBuV/m]	Margin [dB]
181.085	58.6	BL	8.4	-31.3	35.7	4	157	Hori.	50	14.3
133.977	59.1	BL	11.1	-31.6	38.6	64	146	Vert.	50	11.4
58.361	62.3	BL	5	-32.1	35.2	143	132	Vert.	50	14.8

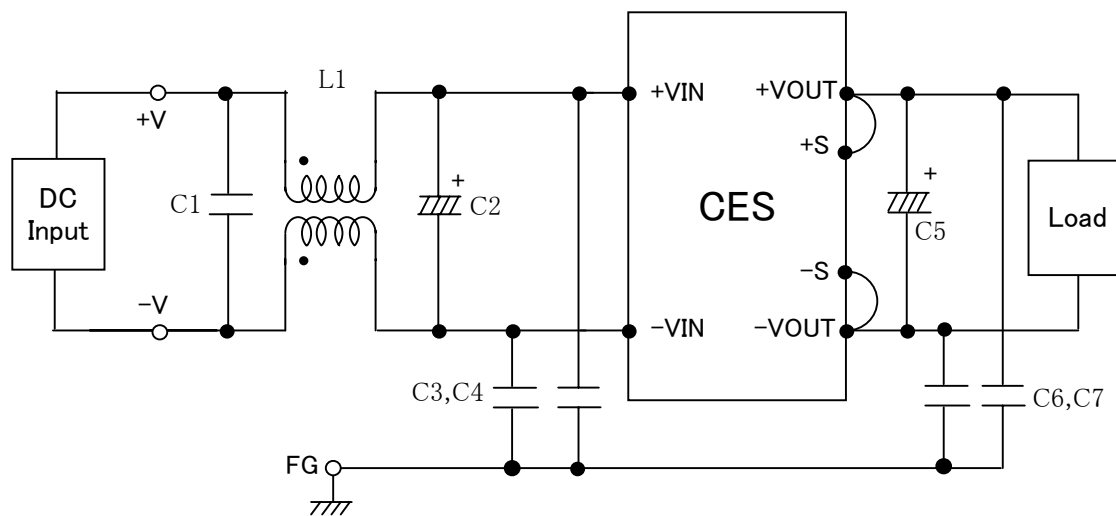
TEST : Line conduction
Model Name : CES

Date 2005/11/28

○ Photographs of Test Set-Up



○ Testing circuitry

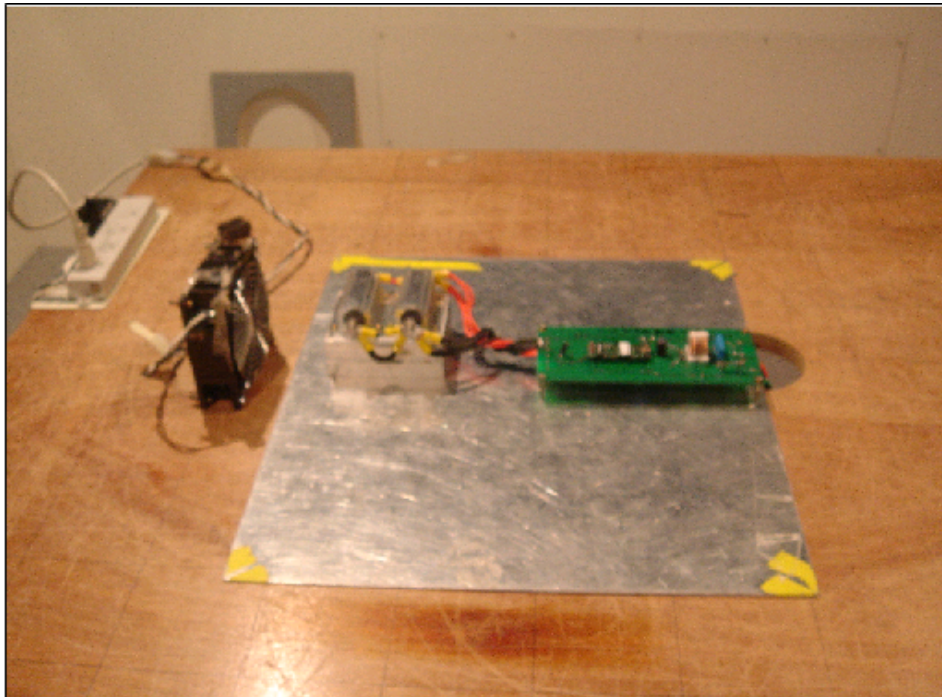


- L1 : 1mH 5A Inductor
- C1 : $2.2\mu\text{F}$ Film capacitor
- C2 : 100V $33\mu\text{F}$ Electric capacitor
- C3,4 : 630V $0.068\mu\text{F}$ Film capacitor
- C5 : 25V $10\mu\text{F}$ Electric capacitor
- C6,7 : 630V $0.033\mu\text{F}$ Film capacitor

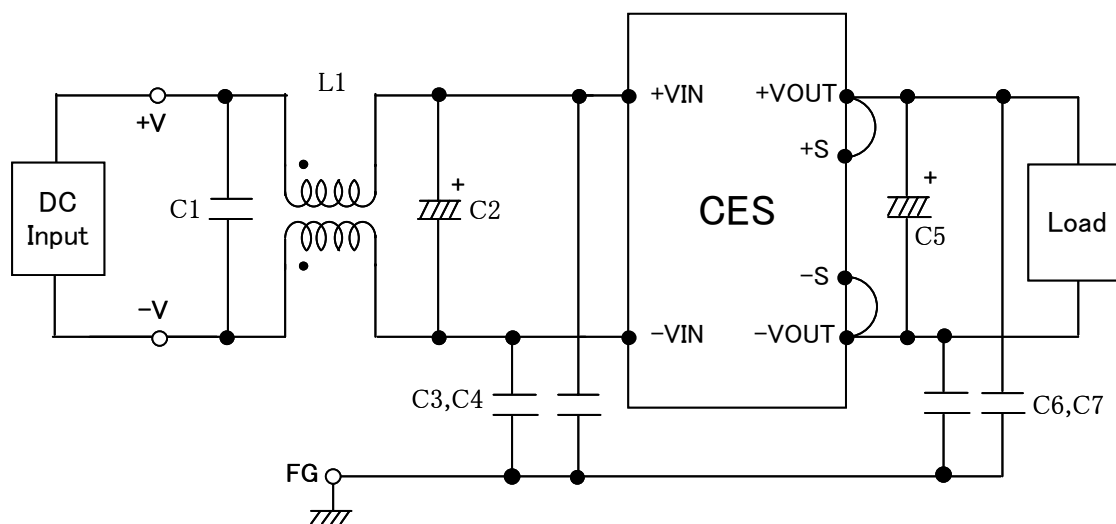
TEST : Radiated emission
Model Name : CES

Date 2005/11/28

○ Photographs of Test Set-Up



○ Testing circuitry



- L1 : 1mH 5A Inductor
- C1 : $2.2 \mu\text{F}$ Film capacitor
- C2 : 100V $33 \mu\text{F}$ Electric capacitor
- C3,4 : 630V $0.068 \mu\text{F}$ Film capacitor
- C5 : 25V $10 \mu\text{F}$ Electric capacitor
- C6,7 : 630V $0.033 \mu\text{F}$ Film capacitor