

DATA SHEET				Date	16-Dec-08
Model	CES48120-7P			Temp.	25 degreeC
Test	EMI Line conduction & Radiated emission			Humid.	0.45 %RH
				Tested by	Y.Kamon

LINE CONDUCTION

Model Name : CES48120-7P
 Model No. :
 Serial No. :
 Points : 3
 Detector : PEAK/QP/Ave.
 Line Mode : VA/VB
 Power Supply : DC 48V
 Limit1: [EN 55022] Class A(QP)
 Limit2: [EN 55022] Class A(Ave.)

Temp. : 25degC
 Humi. : 45%
 Date : 2008/12/16 19:04
 Test Equip. : R3132,ESPC
 Load Line :
 Comment :

Limit1(QP) ———

Limit2(Ave.) - - -

VA(PEAK) ———

VB(PEAK) ———

VA(QP) ○

VA(Ave.) ×

VB(QP) ○

VB(Ave.) ×

Frequency [MHz]	Meter Reading (Ave.) [dBuV]	Meter Reading (QP) [dBuV]	Factor [dB]	Level(Ave.) [dBuV]	Level(QP) [dBuV]	Line	Limit(Ave.) [dBuV]	Limit(QP) [dBuV]	Margin(Ave.) [dB]	Margin(QP) [dB]
15.6666	32.5	36.1	10.2	42.7	46.3	VA	60	73	17.3	26.7
18.8841	41.9	44.1	10.3	52.2	54.4	VA	60	73	7.8	18.6
29.337	22.4	26.1	10.5	32.9	36.6	VA	60	73	27.1	36.4
15.6712	40.9	42.6	10.2	51.1	52.8	VB	60	73	8.9	20.2
18.881	21.3	30.9	10.3	31.6	41.2	VB	60	73	28.4	31.8

RADIATED EMISSION

Model Name : CES48120-7P
 Model No. :
 Serial No. :
 Points : 3
 Detector : PEAK/QP
 Polarization : Hori. & Vert.
 Power Supply : DC 48V
 Limit: [EN 55022] Class A<3m>

Temp. : 25degC
 Humi. : 45%
 Date : 2008/12/16 19:44
 Test Equip. : R3132,ESPC
 Load Line :
 Comment :

Limit(QP) ———

Horizontal(PEAK) ———

Vertical(PEAK) ———

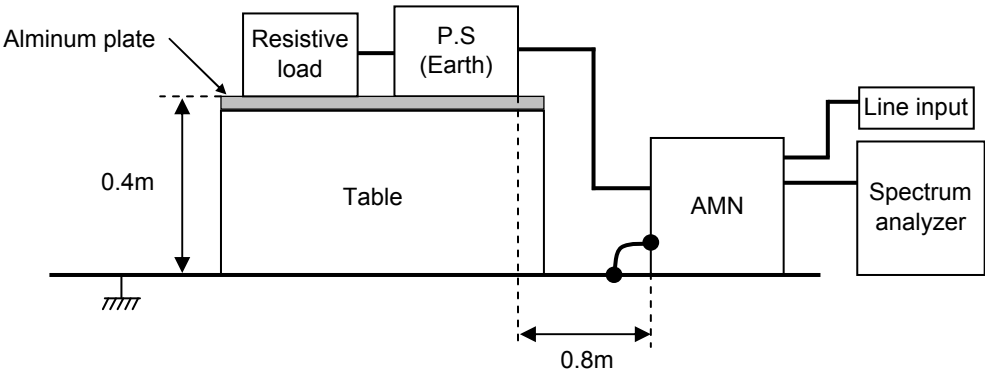
Horizontal(QP) ○

Vertical(QP) ×

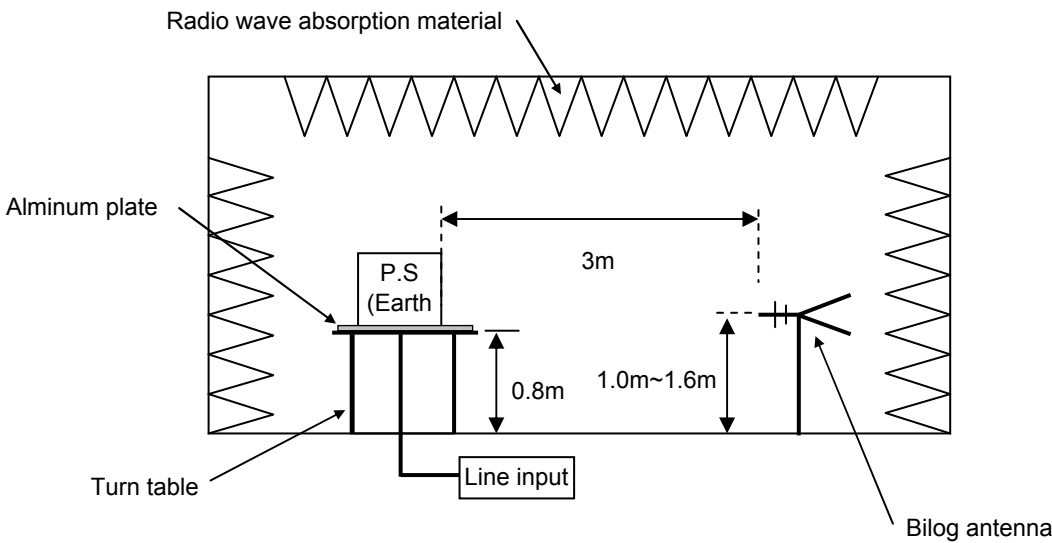
Frequency [MHz]	MeterReading (QP) [dBuV]	Ant. Type	Antenna Factor [dB/m]	Cable & Preamp [dB]	Level(QP) [dBuV/m]	Angle [°]	Height [cm]	Polar.	Limit [dBuV/m]	Margin [dB]
42.616	58.3	BL	11.6	-32.2	37.7	281	101	Vert.	50	12.3
43.386	60.2	BL	11.1	-32.2	39.1	285	102	Vert.	50	10.9
43.386	59.5	BL	11.1	-32.2	38.4	291	103	Vert.	50	11.6

DATA SHEET		Date	16-Dec-08
Model	Circuit used for measurement	Temp.	25 degreeC
Test	EMI Line conduction & Radiated emission	Humid.	0.45 %RH
		Tested by	Y.Kamon

1. Line conduction



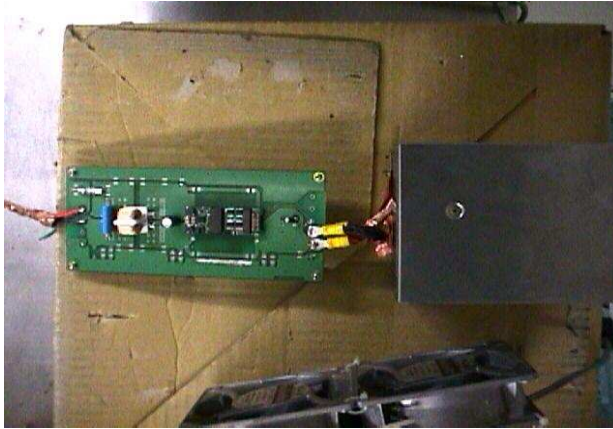
2. Radiated emission



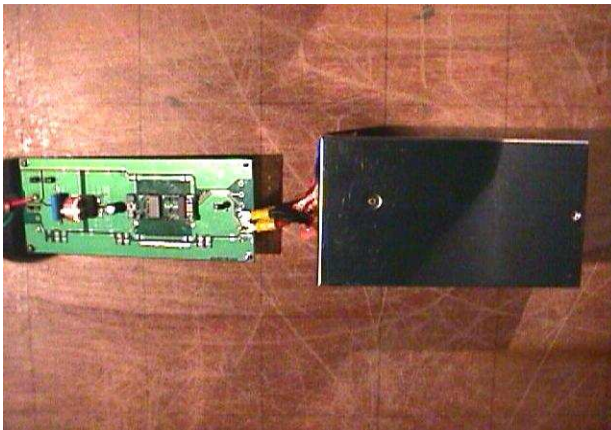
TEST : EMI
Model Name : CES48120-7P

Date 2008/12/16

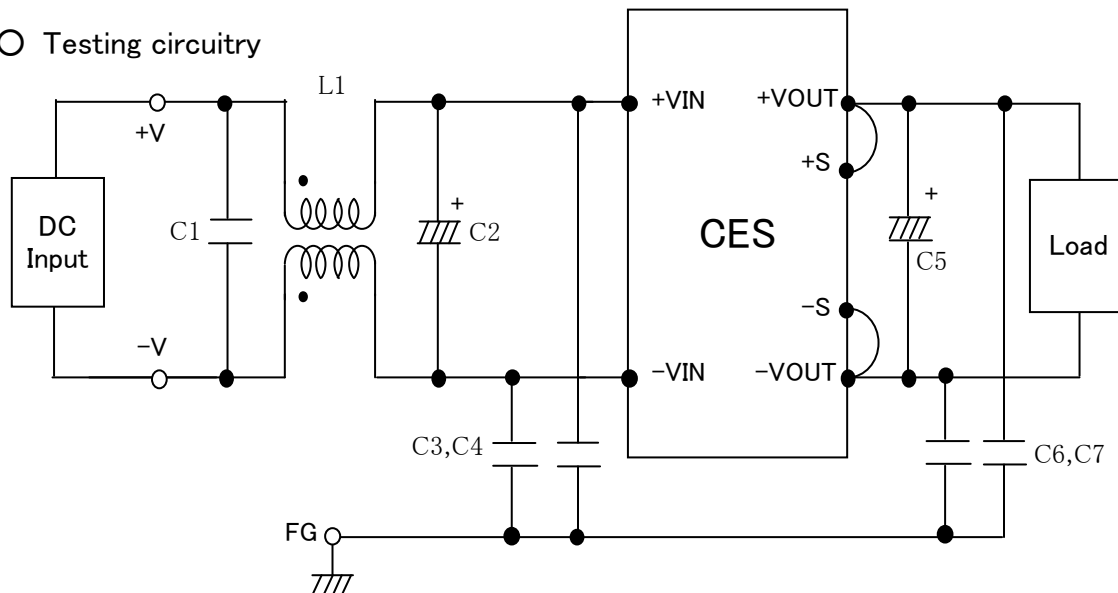
○ Photographs of Test Set-Up
LINE CONDUCTION



RADIATED EMISSION



○ Testing circuitry



L1 : 1mH 5A Inductor
C1 : 2.2 μ F Film capacitor
C2 : 100V 47 μ F Electric capacitor
C3,4 : 630V 0.068 μ F Film capacitor
C5 : 25V 10 μ F Electric capacitor
C6,7 : 630V 0.033 μ F Film capacitor