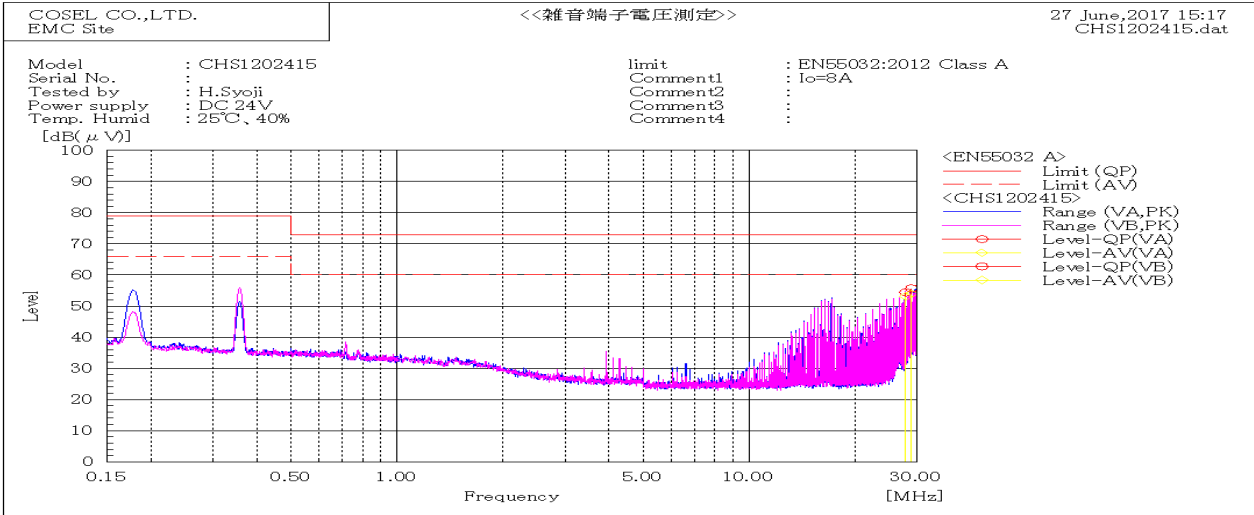
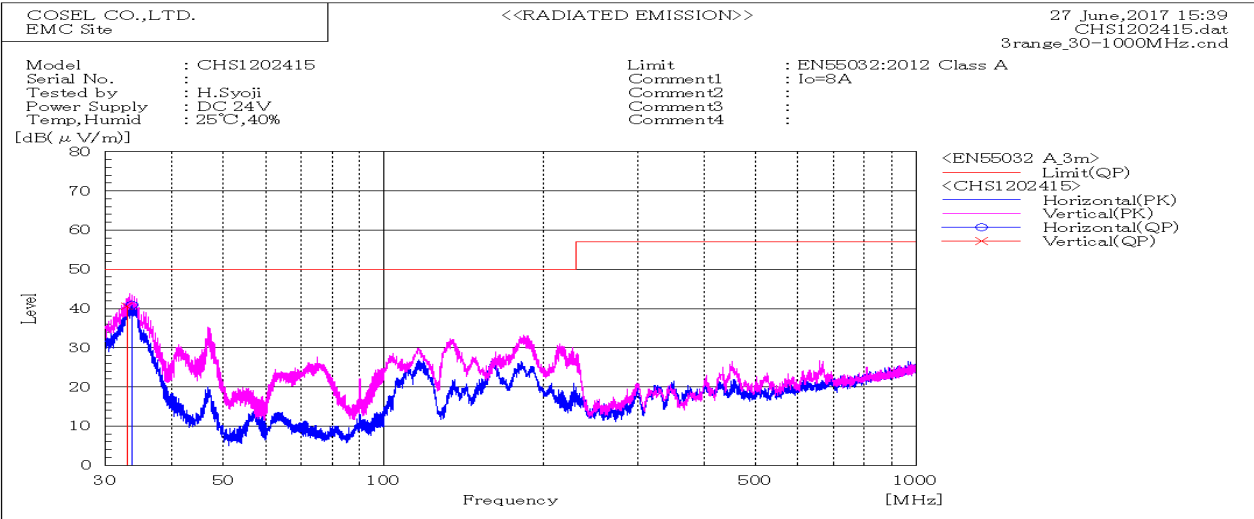


DATA SHEET		Date	27-Jun-17
Model	CHS1202415	Temp.	25 degreeC
Test	EMI Line conduction & Radiated emission	Humid.	40 %RH
		Tested by	H.Syoji



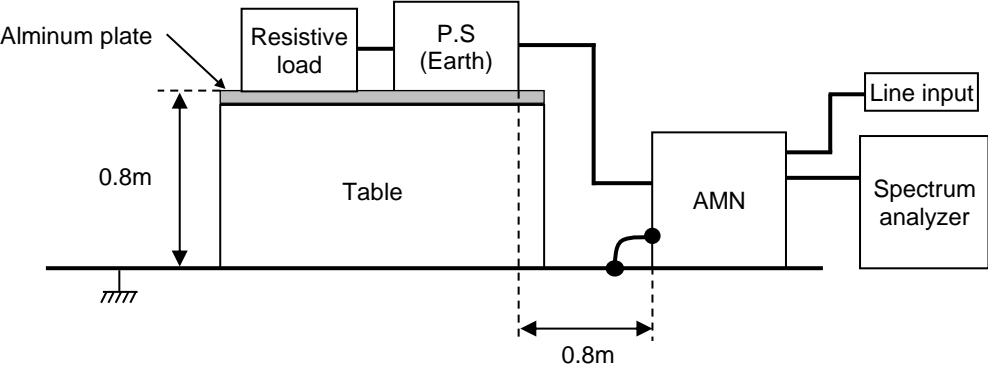
Frequency MHz	Line Phase	Level dB(μV)		Limit dB(μV)		Margin dB		Pass/Fail	Remark
		QP	AV	QP	AV	QP	AV		
27.91335	VB	54.4	53.2	73	60	18.6	6.8	Pass	
28.996	VA	55.7	53.9	73	60	17.3	6.1	Pass	



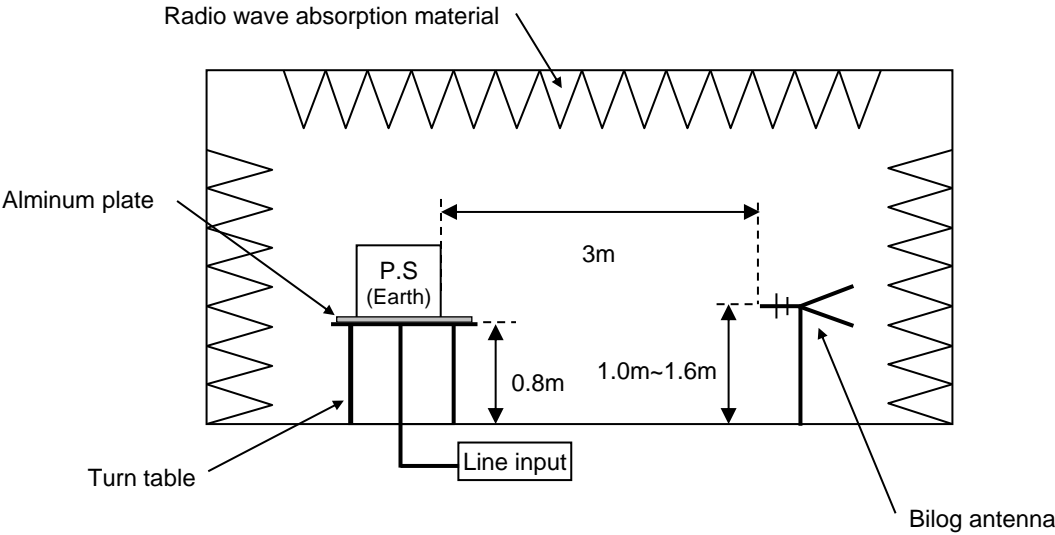
Frequency MHz	Polarization	Stability	Reading dB(μV)	Limit dB(μV/m)	Margin dB(μV/m)	Pass/Fail	Height cm	Angle deg	Remark
			QP	QP	QP				
32.941	V	Stable	40.6	50.0	9.4	Pass	107	302	
33.650	H	Stable	40.9	50.0	9.1	Pass	152	319	

DATA SHEET		Date	27-Jun-17
Model	Circuit used for measurement	Temp.	25 degreeC
Test	EMI Line conduction & Radiated emission	Humid.	40 %RH
		Tested by	H.Syoji

1. Line conduction



2. Radiated emission

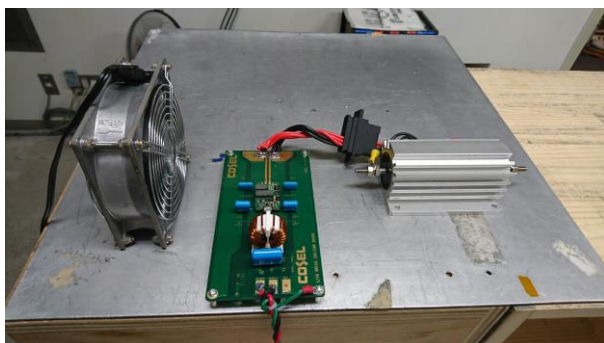


## Conditions

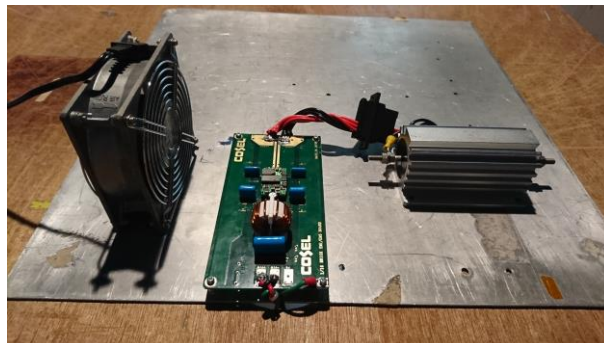
Test : EMI  
Model Name : CHS12024□

○Photographs of Test Set-Up

### LINE CONDUCTION



### RADIATED EMISSION



○Testing circuitry

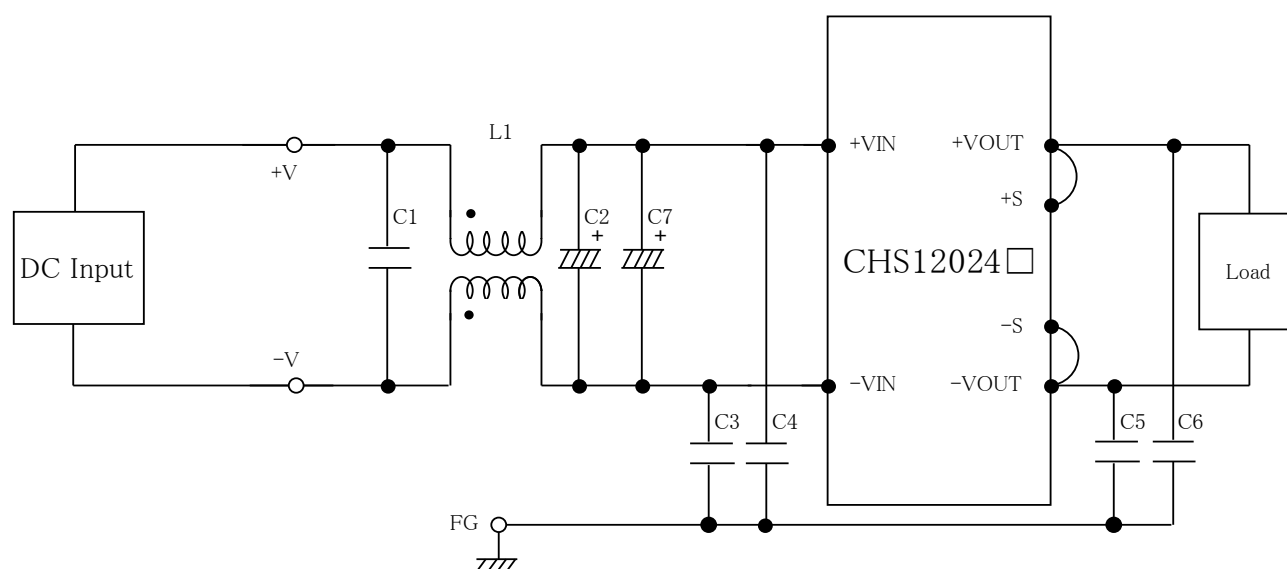


Fig.1 Testing circuitry

L1 : 0.5mH SC-15-05J (TOKIN)  
C1 : 250V 2.2  $\mu$ F FPD22E225J4 (NITSUKO)  
C2,C7 : 50V 100  $\mu$ F PWseries (nichicon)  
C3,C4 : 630V 0.068  $\mu$ F FPD22J683J4 (NITSUKO)  
C5,C6 : 630V 0.033  $\mu$ F FPD22J333J4 (NITSUKO)