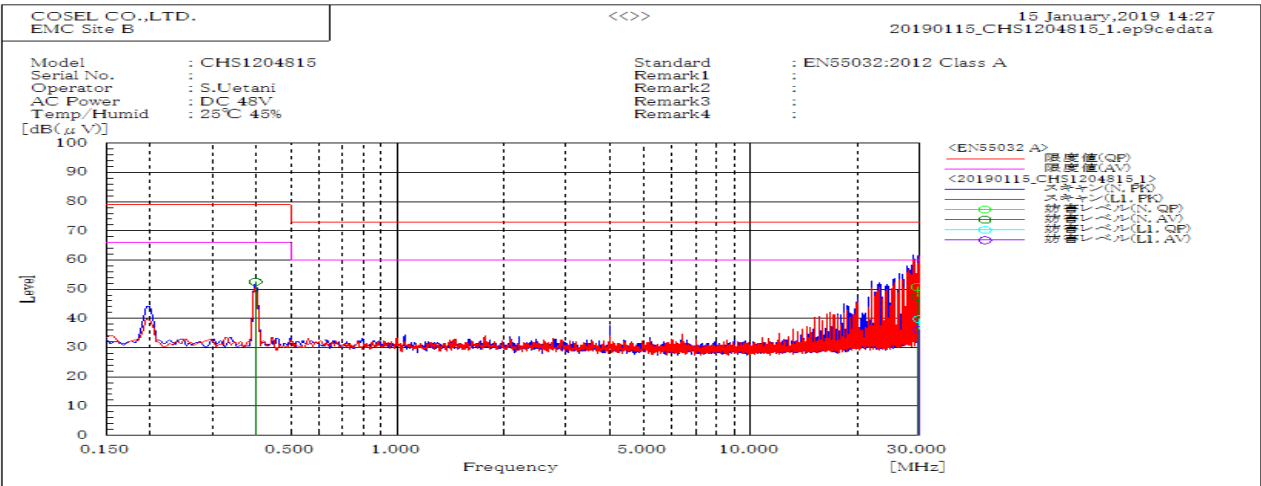
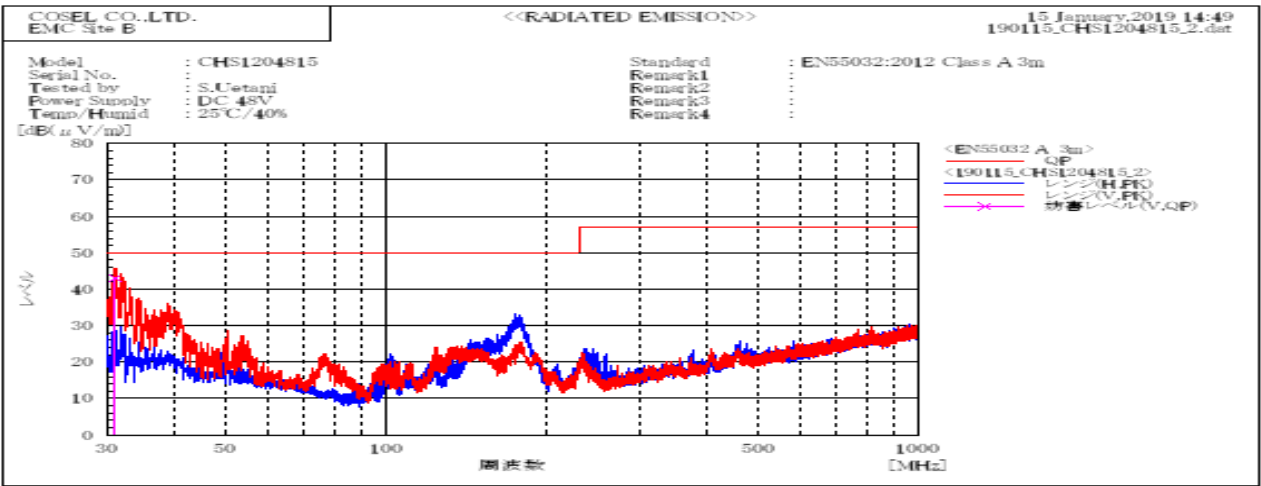


DATA SHEET		Date	05-Mar-19
Model	CHS1204815	Temp.	25 degreeC
Test	EMI Line conduction & Radiated emission	Humid.	40 %RH
		Tested by	S.Uetani



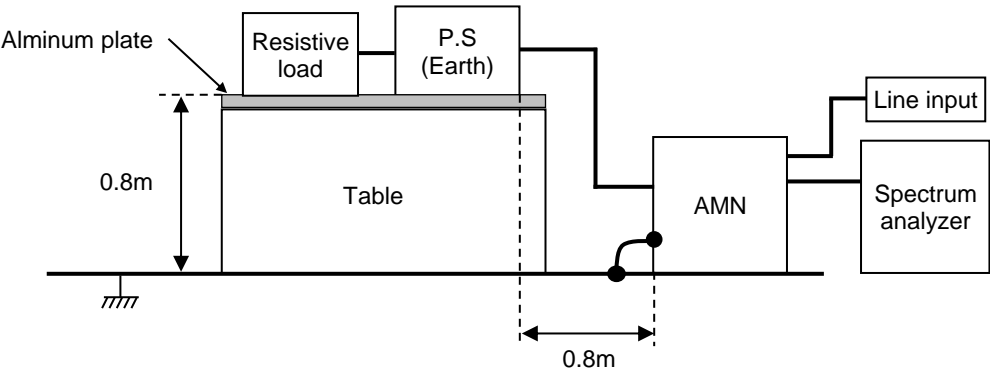
Frequency MHz	Line	Level dB(μV)		Limit dB(μV)		Margin dB		Pass/Fail	Remark
		QP	AV	QP	AV	QP	AV		
29.999	L1	39.8	36.1	73	60	33.2	23.9	Pass	
0.397	N	52.6	52.5	79	66	26.4	13.5	Pass	
29.608	N	50.8	47.4	73	60	22.2	12.6	Pass	



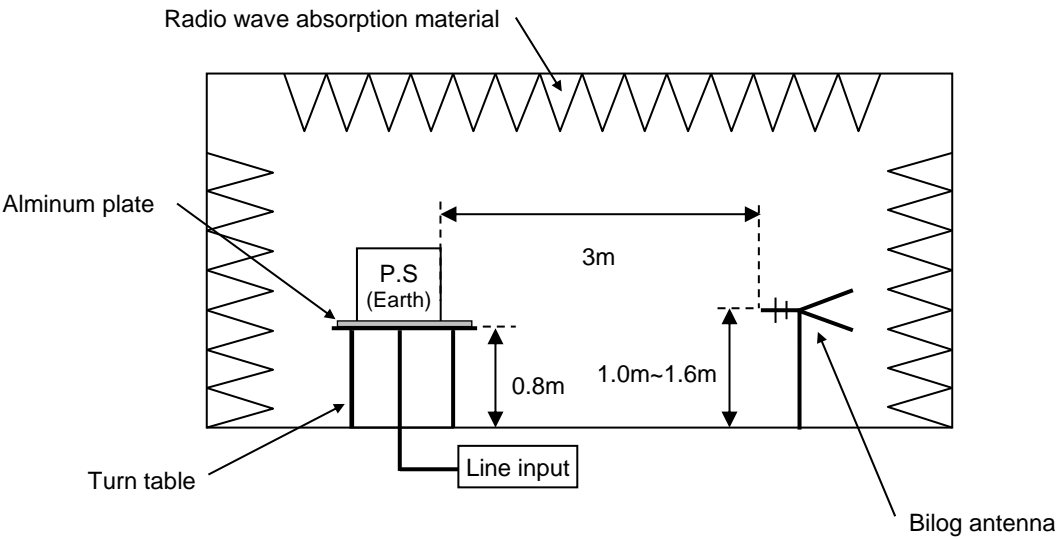
Frequency MHz	Polarization	Stability	Level dB(μV/m)		Margin dB	Pass/Fail	Height cm	Angle deg	Remark
			QP	QP	QP				
31.069	V	Stable	42.9	50	7.1	Pass	101.4	299.7	

DATA SHEET		Date	05-Mar-19
Model	Circuit used for measurement	Temp.	25 degreeC
Test	EMI	Humid.	40 %RH
	Line conduction & Radiated emission	Tested by	S.Uetani

1. Line conduction



2. Radiated emission

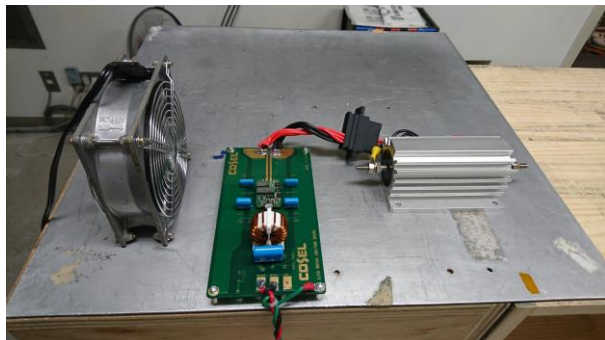


Conditions

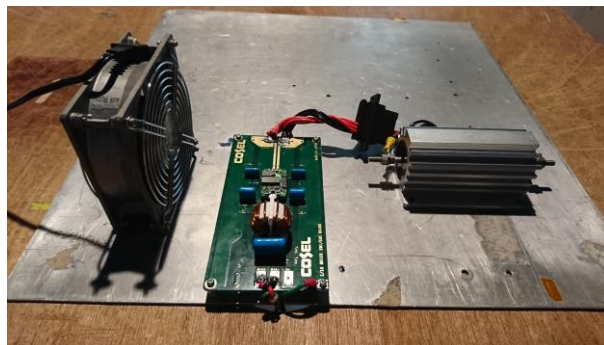
Test : EMI
Model Name : CHS12048□

○Photographs of Test Set-Up

LINE CONDUCTION



RADIATED EMISSION



○Testing circuitry

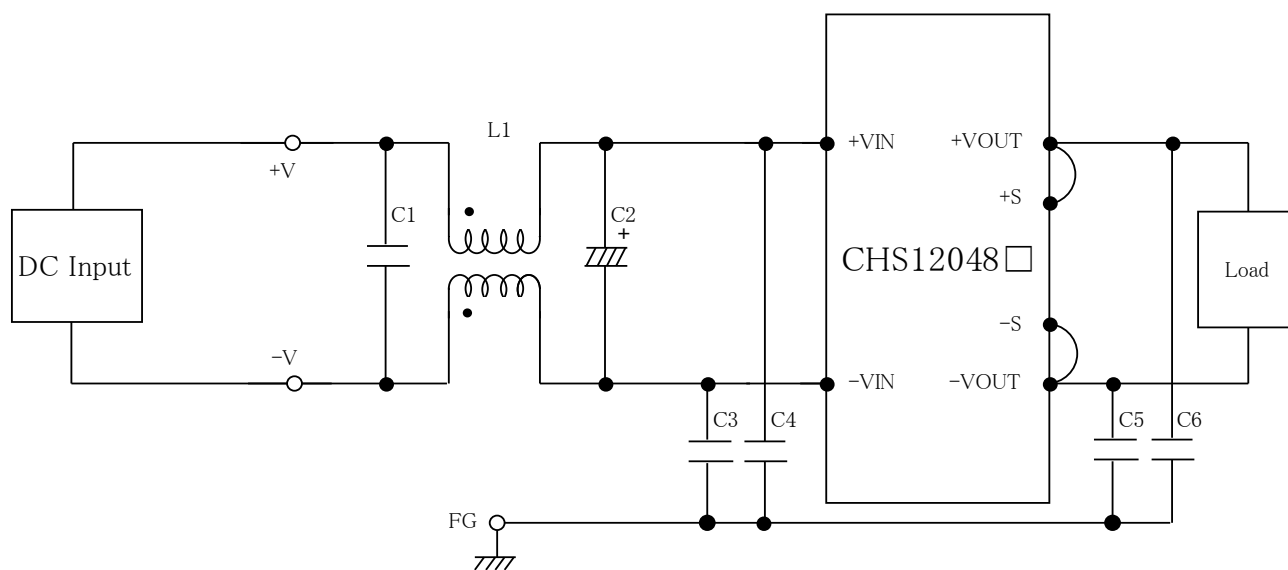


Fig.1 Testing circuitry

L1 : 1mH SC-05-10J (TOKIN)
C1 : 250V 2.2 μ F FPD22E225J4 (NITSUKO)
C2 : 100V 47 μ F PWseries (nichicon)
C3,C4 : 630V 0.068 μ F FPD22J683J4 (NITSUKO)
C5,C6 : 630V 0.033 μ F FPD22J333J4 (NITSUKO)