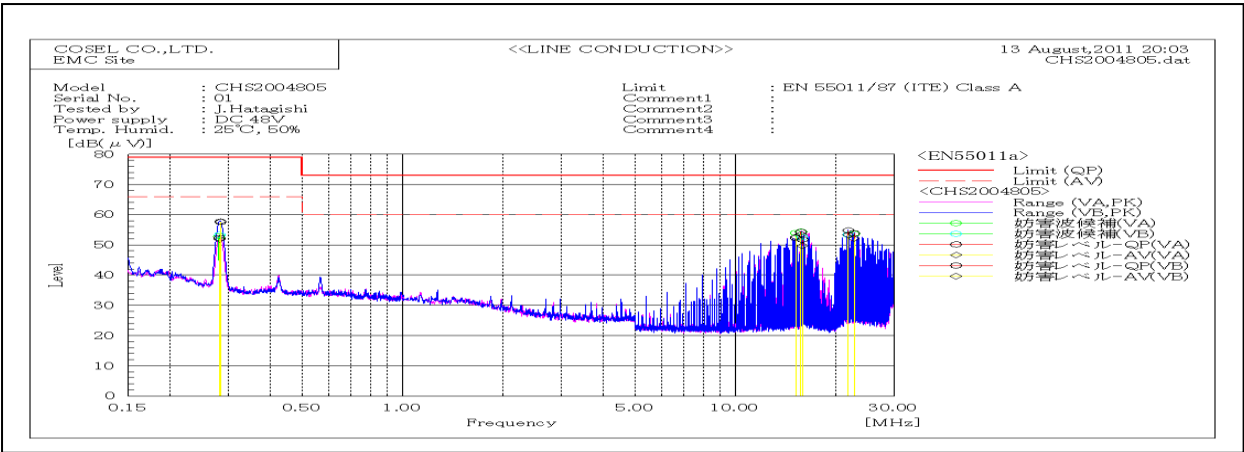
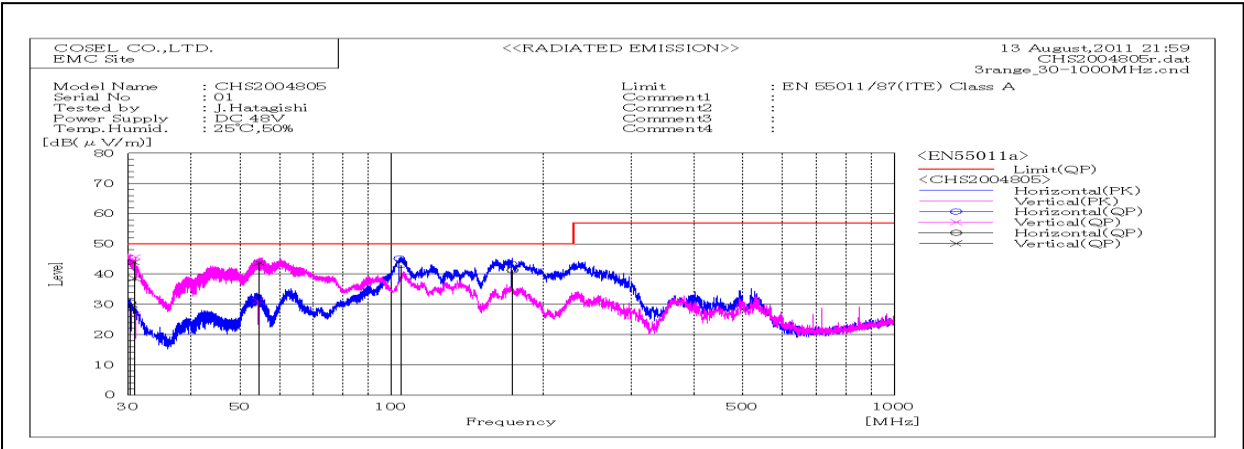


| DATA SHEET | | Date | 13-Aug-11 |
|------------|--|-----------|-------------|
| Model | CHS2004805 | Temp. | 25 degreeC |
| Test | EMI Line conduction & Radiated emission | Humid. | 40 %RH |
| | | Tested by | J.Hatagishi |



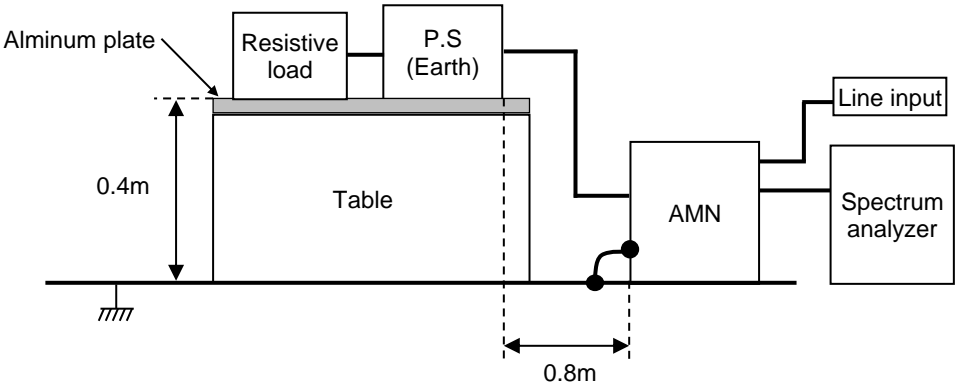
| Frequency MHz | Line Phase | Reading dB(μV) | | Factor dB | Level dB(μV) | | Limit dB(μV) | | Margin dB | | Pass/ Fail |
|------------------|---------------|-------------------|------|--------------|-----------------|------|-----------------|----|--------------|------|---------------|
| | | QP | AV | | QP | AV | QP | AV | QP | AV | |
| 0.28191 | VA | 42.3 | 41.9 | 10 | 52.3 | 51.9 | 79 | 66 | 26.7 | 14.1 | Pass |
| 0.28391 | VB | 47.6 | 47.7 | 10 | 57.6 | 57.7 | 79 | 66 | 21.4 | 8.3 | Pass |
| 15.17 | VA | 41.7 | 41.9 | 10.7 | 52.4 | 52.6 | 73 | 60 | 20.6 | 7.4 | Pass |
| 15.7404 | VA | 43.5 | 42.7 | 10.8 | 54.3 | 53.5 | 73 | 60 | 18.7 | 6.5 | Pass |
| 15.87695 | VB | 41.1 | 39.1 | 10.7 | 51.8 | 49.8 | 73 | 60 | 21.2 | 10.2 | Pass |
| 21.8422 | VB | 43.9 | 42.4 | 10.9 | 54.8 | 53.3 | 73 | 60 | 18.2 | 6.7 | Pass |
| 22.69345 | VA | 42.8 | 41.1 | 11 | 53.8 | 52.1 | 73 | 60 | 19.2 | 7.9 | Pass |



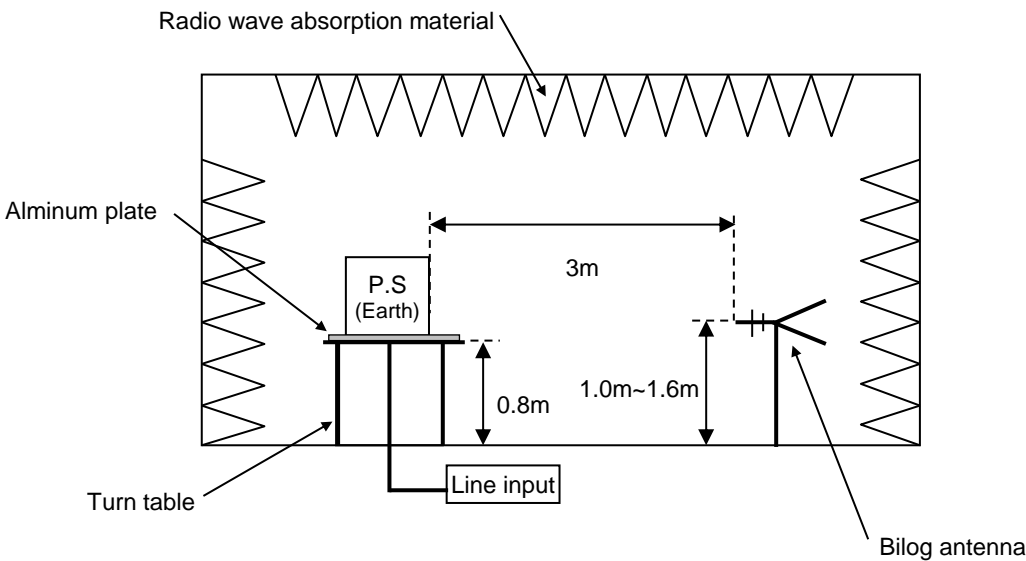
| Frequency MHz | Polariz ation | Stabili ty | Readi ng dB(μV | Space Loss dB | Level dB(m W) | Limit dB(mW) | Margi n dB | Pass/ Fail | Height cm | Angle deg |
|------------------|------------------|---------------|----------------------|---------------------|---------------------|-----------------|------------------|---------------|--------------|--------------|
| | | | QP | | | | | | | |
| 30.258 | H | Stable | 44.1 | -13.5 | 30.6 | 50 | 19.4 | Pass | 120 | 71 |
| 30.903 | V | Stable | 52.4 | -13.8 | 38.6 | 50 | 11.4 | Pass | 136 | 231 |
| 30.813 | V | Stable | 57.7 | -13.8 | 43.9 | 50 | 6.1 | Pass | 104 | 255 |
| 54.707 | V | Stable | 69.2 | -25.5 | 43.7 | 50 | 6.3 | Pass | 105 | 294 |
| 104.503 | H | Stable | 64.1 | -21 | 43.1 | 50 | 6.9 | Pass | 158 | 134 |
| 173.998 | H | Stable | 63.5 | -22.2 | 41.3 | 50 | 8.7 | Pass | 158 | 107 |

| DATA SHEET | | Date | 13-Aug-11 |
|------------|--|-----------|-------------|
| Model | Circuit used for measurement | Temp. | 25 degreeC |
| Test | EMI Line conduction & Radiated emission | Humid. | 40 %RH |
| | | Tested by | J.Hatagishi |

1. Line conduction



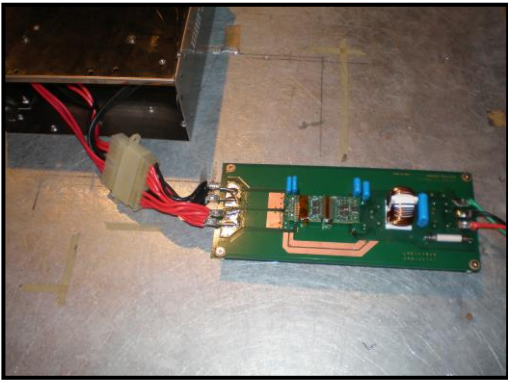
2. Radiated emission



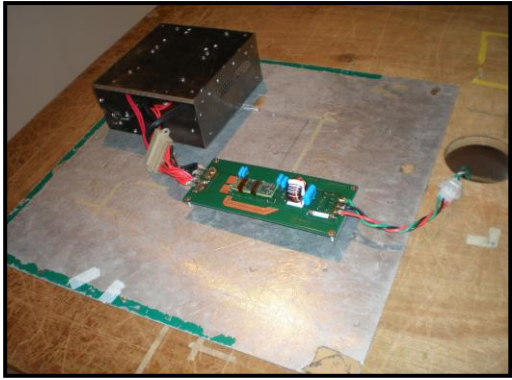
Test : EMI
Model Name : CHS200 Series

○ Photographs of Test Set-Up

LINE CONDUCTION



RADIATED EMISSION



○ Testing circuitry

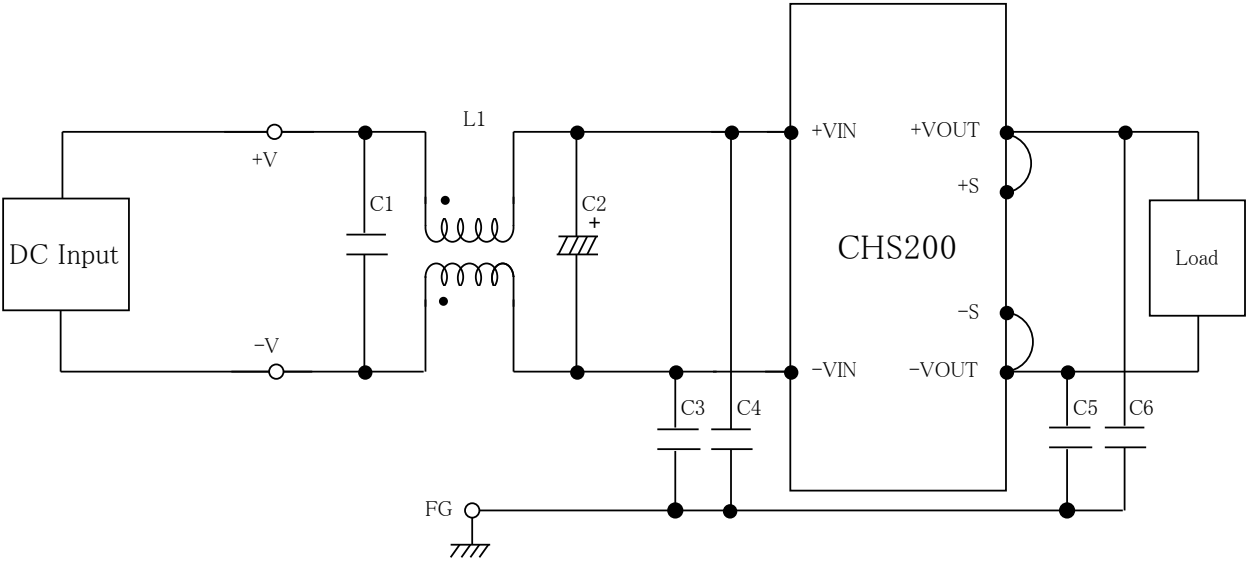


Fig.1 Testing circuitry

- L1 : 1mH SC-10-10J (TOKIN)
- C1 : 250V 2.2 μ F FPD22E225J4 (NITSUKO)
- C2 : 100V 100 μ F PWseries (nichicon)
- C3,C4 : 630V 0.068 μ F FPD22J683J4 (NITSUKO)
- C5,C6 : 630V 0.033 μ F FPD22J333J4 (NITSUKO)