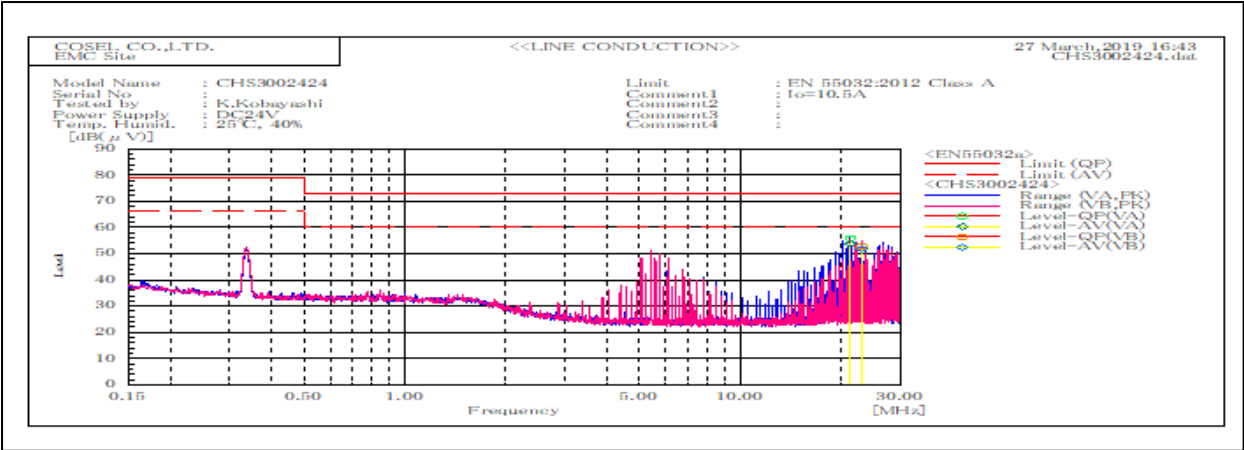
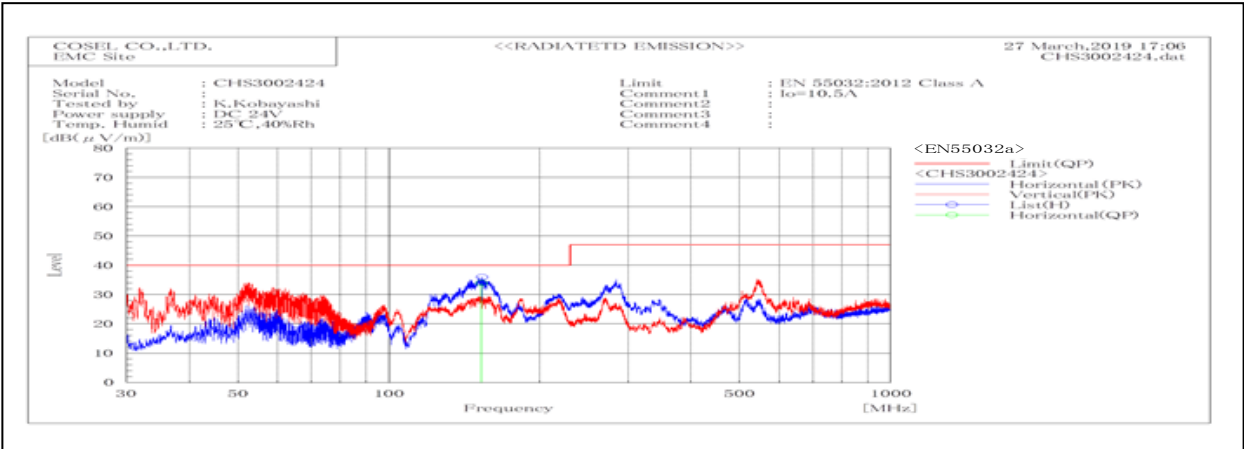


DATA SHEET		Date	29-Mar-19
Model	CHS3002424	Temp.	25 degreeC
Test	EMI Line conduction & Radiated emission	Humid.	40 %RH
		Tested by	K.Kobayashi



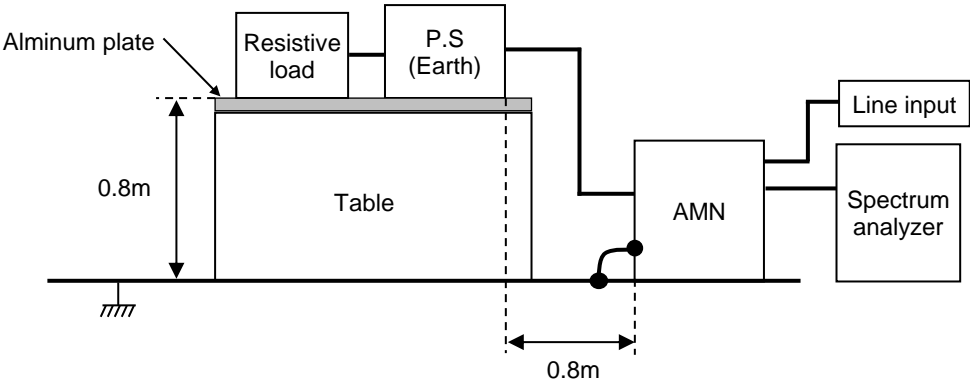
Frequency MHz	Line Phase	Level dB(uV)		Limit dB(uV)		Margin dB		Pass/Fail	Remark
		QP	AV	QP	AV	QP	AV		
21.3029	LA	55.8	53.7	73	60	17.2	6.3	Pass	
22.9875	LB	52.8	51.8	73	60	20.2	8.2	Pass	



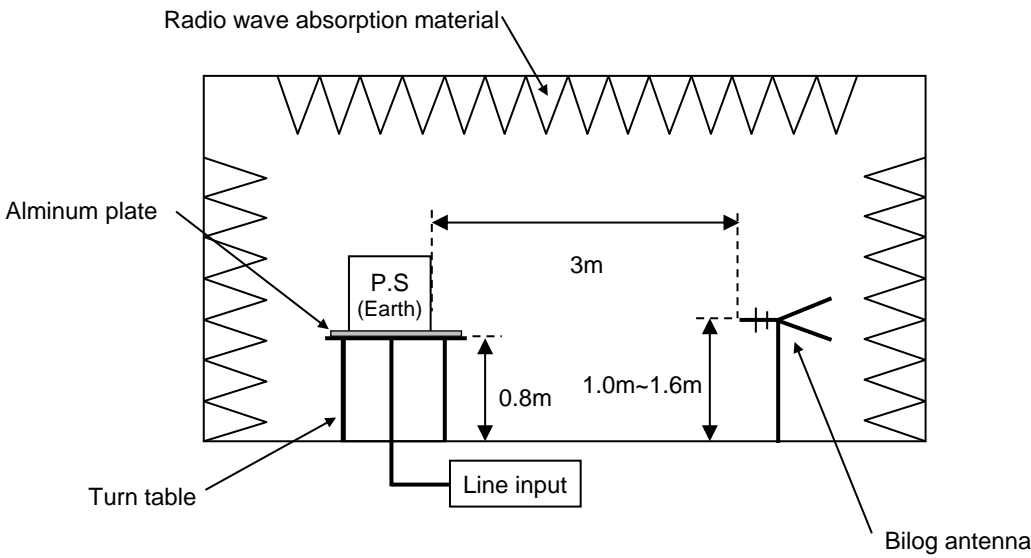
Frequency MHz	Polarization	Stability	Reading dB(uV)	Limit dB(uV/m)	Margin dB(uV/m)	Pass/Fail	Height cm	Angle deg	Remark
			QP	QP	QP				
152.974	H	Stable	33.9	40.0	6.1	Pass	180	190	

DATA SHEET		Date	29-Mar-19
Model	Circuit used for measurement	Temp.	25 degreeC
Test	EMI Line conduction & Radiated emission	Humid.	40 %RH
		Tested by	K.Kobayashi

1. Line conduction



2. Radiated emission



Conditions

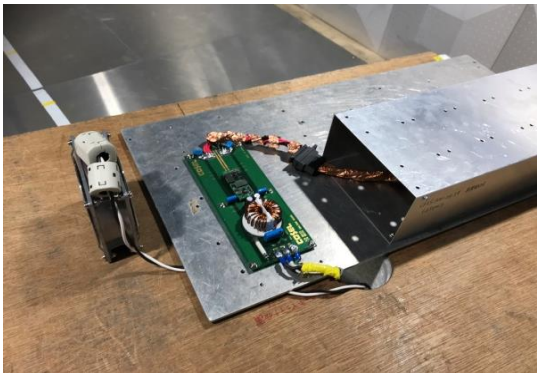
Test : EMI
Model Name : CHS30024□

○Photographs of Test Set-Up

LINE CONDUCTION



RADIATED EMISSION



○Testing circuitry

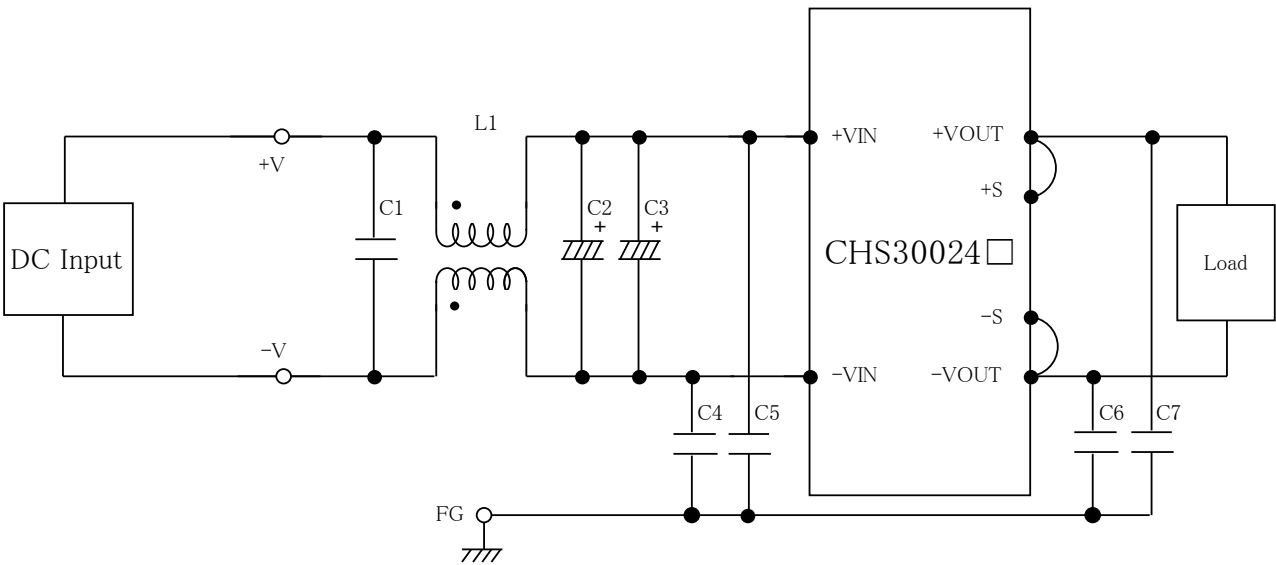


Fig.1 Testing circuitry

- L1 : 1mH SC-20-10JH (TOKIN)
- C1 : 250V 2.2 μ F FPD22E225J4 (NITSUKO)
- C2,C3 : 50V 330 μ F PWseries (nichicon)
- C4,C5 : 630V 0.068 μ F FPD22J683J4(NITSUKO)
- C6,C7 : 630V 0.033 μ F FPD22J333J4(NITSUKO)