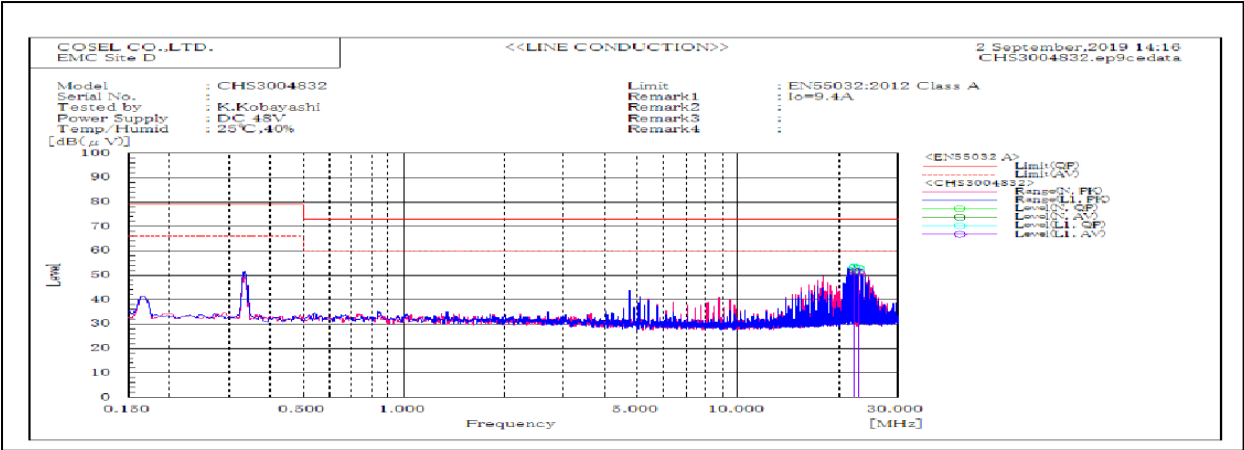
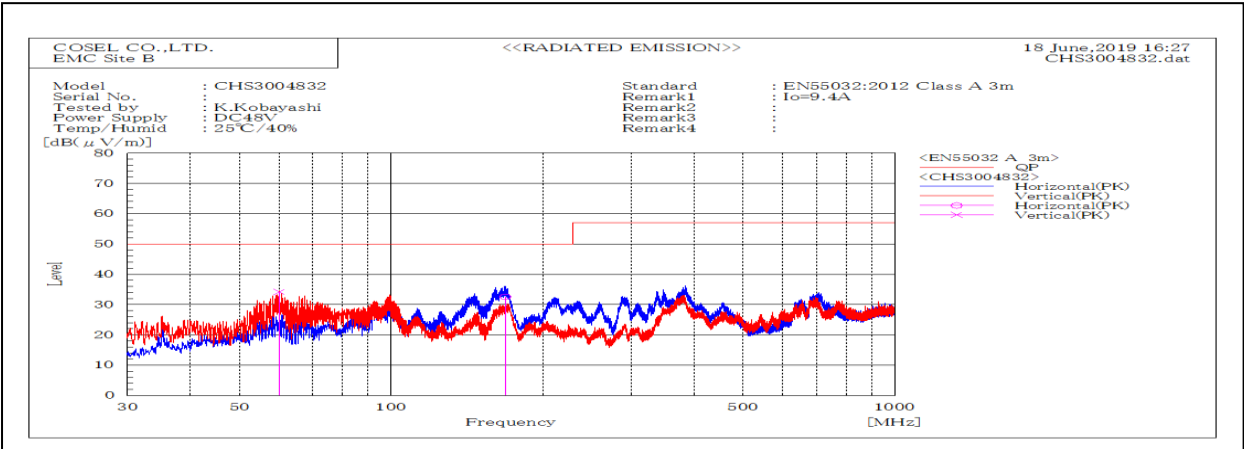


| DATA SHEET | | Date | 02-Sep-19 |
|------------|--|-----------|-------------|
| Model | CHS3004832 | Temp. | 25 degreeC |
| Test | EMI Line conduction & Radiated emission | Humid. | 40 %RH |
| | | Tested by | K.kobayashi |



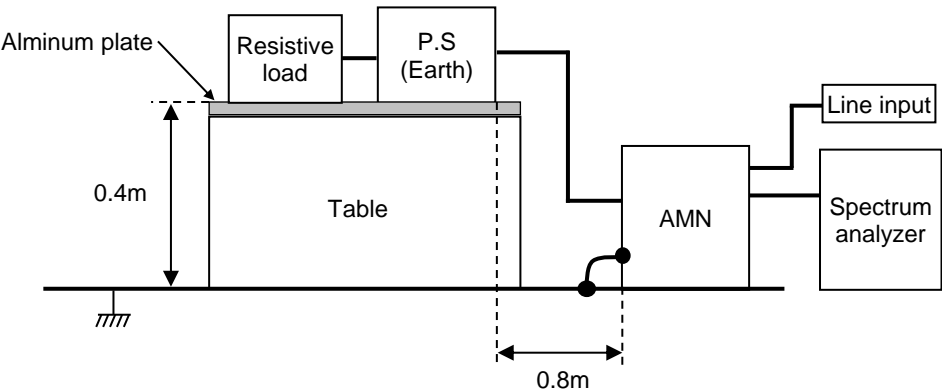
| Frequency | Line | Level | | Limit | | Margin | | Pass/Fail | Remark |
|-----------|------|--------|------|--------|------|--------|-----|-----------|--------|
| MHz | | dB(μV) | | dB(μV) | | dB | | | |
| | | QP | AV | QP | AV | QP | AV | | |
| 22.27 | L1 | 53.5 | 51.2 | 73.0 | 60.0 | 19.5 | 8.8 | Pass | |
| 22.94 | L1 | 52.5 | 51.2 | 73.0 | 60.0 | 20.5 | 8.8 | Pass | |
| 22.27 | N | 53.2 | 52.0 | 73.0 | 60.0 | 19.8 | 8.0 | Pass | |
| 22.94 | N | 52.8 | 51.6 | 73.0 | 60.0 | 20.2 | 8.4 | Pass | |



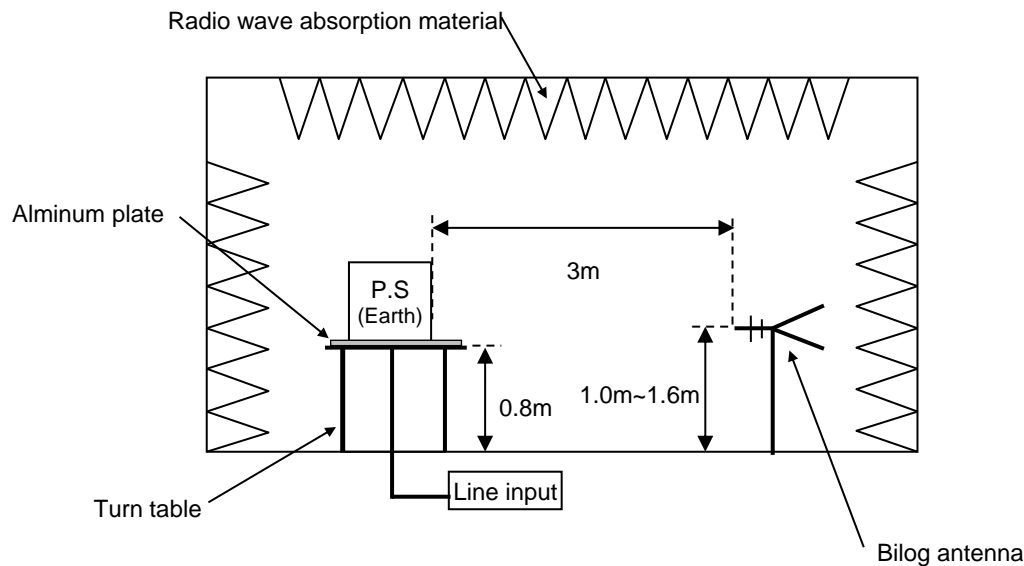
| Frequency MHz | Polarization | Stability | Level | Limit | Margin | Pass/Fail | Height cm | Angle deg | Remark |
|------------------|--------------|-----------|----------------|----------------|----------|-----------|--------------|--------------|--------|
| | | | dB(uV/m) QP | dB(uV/m) QP | dB QP | | | | |
| 168.66 | H | Stable | 32.5 | 50.0 | 17.5 | Pass | 180.6 | 129.7 | |
| 60.02 | V | Stable | 34.2 | 50.0 | 15.8 | Pass | 101.4 | 143.4 | |

| DATA SHEET | | Date | 02-Sep-19 |
|------------|--|-----------|-------------|
| Model | Circuit used for measurement | Temp. | 25 degreeC |
| Test | EMI Line conduction & Radiated emission | Humid. | 40 %RH |
| | | Tested by | K.kobayashi |

1. Line conduction



2. Radiated emission



Conditions

Test : EMI
Model Name : CHS30048□

○Photographs of Test Set-Up

LINE CONDUCTION



RADIATED EMISSION



○Testing circuitry

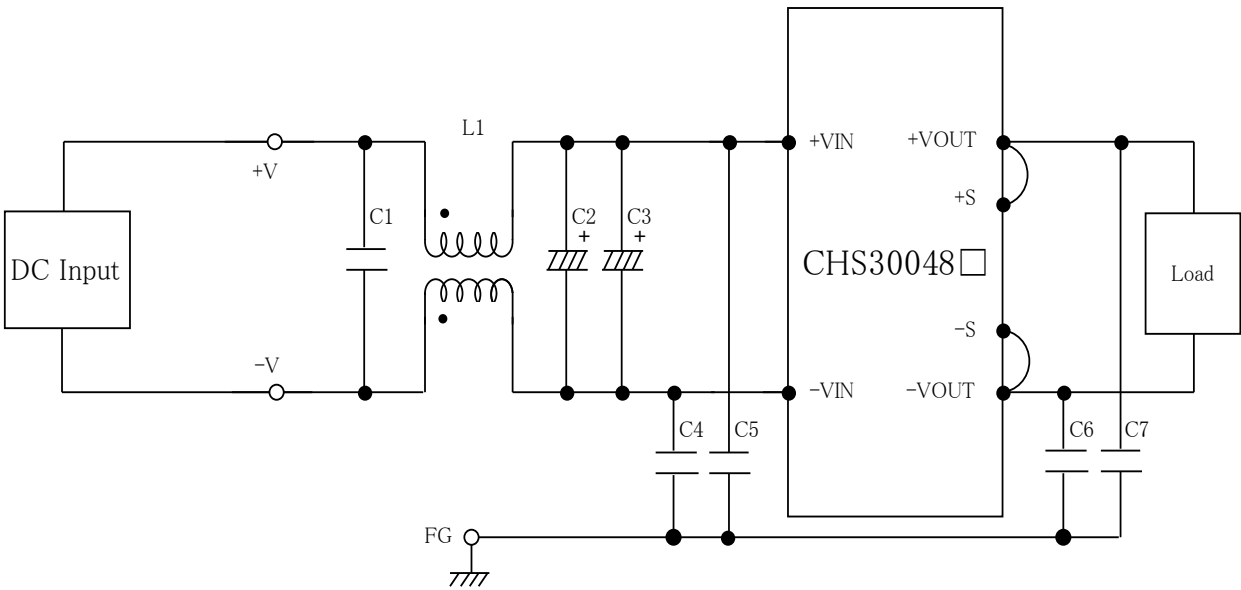


Fig.1 Testing circuitry

- L1 : 1mH SC-20-10JH (TOKIN)
C1 : 250V 2.2 μ F FPD22E225J4 (NITSUKO)
C2,C3 : 100V 100 μ F PWseries (nichicon)
C4,C5 : 630V 0.068 μ F FPD22J683J4 (NITSUKO)
C6,C7 : 630V 0.033 μ F FPD22J333J4 (NITSUKO)