

DATA SHEET		Date	07-Apr-17
Model	CHS3804810	Temp.	25 degreeC
Test	EMI Line conduction & Radiated emission	Humid.	40 %RH
		Tested by	M.Kondo

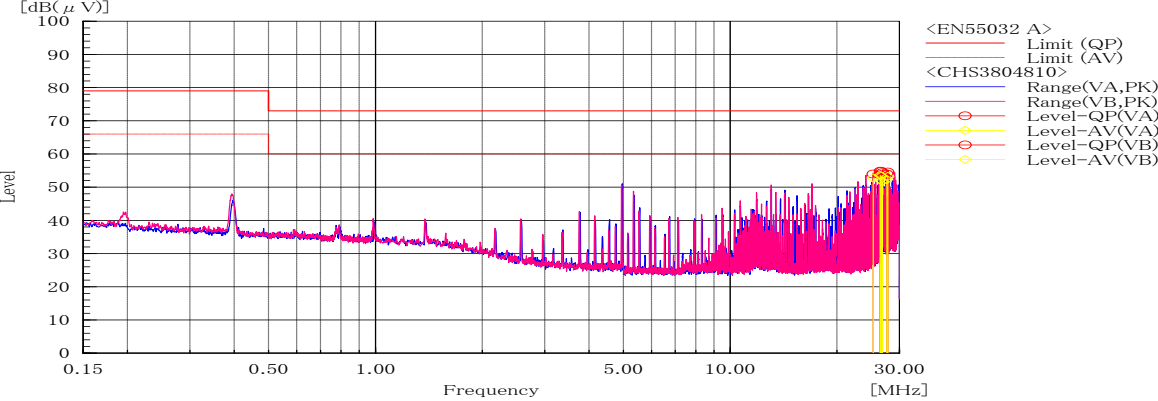
COSEL CO.,LTD.
EMC Site

<<LINE CONDUCTION>>

7 April,2017 16:23

Model : CHS3804810
Sereal No. :
Tested by : M.Kondo
Power supply : DC 48V
Temp. Humid : 25°C, 40%

Limit : EN55032:2012 Class A
Comment1 : Io=38A
Comment2 :
Comment3 :
Comment4 :



Frequency MHz	Line Phase	Level dB(uV)		Limit dB(uV)		Margin dB		Pass/Fail	Remark
		QP	AV	QP	AV	QP	AV		
25.2904	VB	54	52.8	73	60	19	7.2	Pass	
26.47635	VA	53.7	52.2	73	60	19.3	7.8	Pass	
26.47945	VB	54.8	53.6	73	60	18.2	6.4	Pass	
26.6642	VB	54.7	53.3	73	60	18.3	6.7	Pass	
26.85845	VB	54.4	51.7	73	60	18.6	8.3	Pass	
27.64135	VB	54	52.3	73	60	19	7.7	Pass	
27.8329	VB	54.5	53.2	73	60	18.5	6.8	Pass	

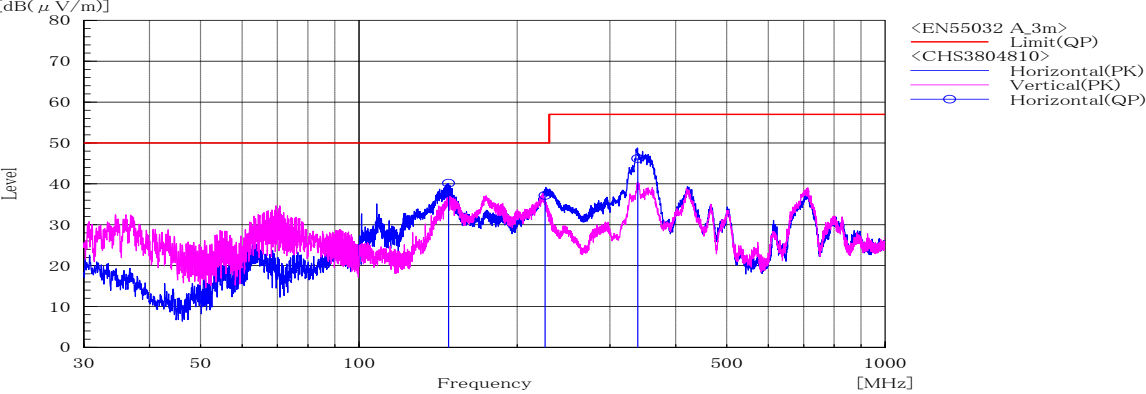
COSEL CO.,LTD.
EMC Site

<<RADIATED EMISSION>>

7 April,2017 16:52
CHS3804810.dat

Model : CHS3804810
Serial No. :
Tested by : M.Kondo
Power Supply : DC 48V
Temp,Humid : 25°C,40%

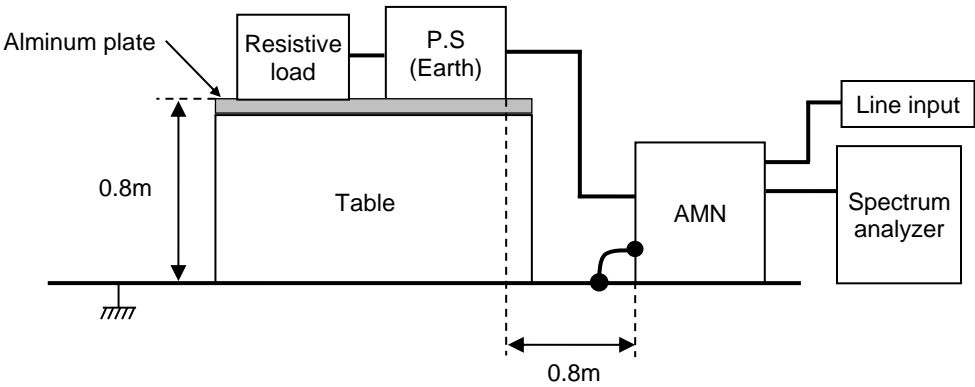
Limit : EN55032:2012 Class A
Comment1 : Io=38A
Comment2 :
Comment3 :
Comment4 :



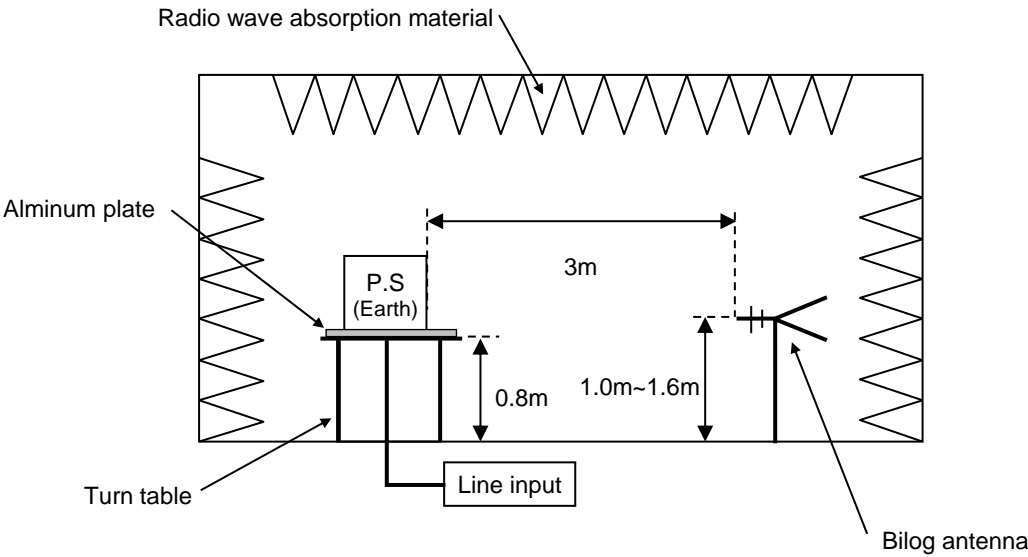
Frequency MHz	Polarization	Stability	Reading dB(uV)	Limit dB(uV/m)	Margin dB(uV/m)	Pass/Fail	Height cm	Angle deg	Remark
			QP	QP	QP				
148.006	H	Stable	40.1	50.0	9.9	Pass	152	149	
225.803	H	Stable	37.2	50.0	12.8	Pass	128	147	
338.633	H	Stable	46.2	57.0	10.8	Pass	100	328	

DATA SHEET		Date	07-Apr-17
Model	Circuit used for measurement	Temp.	25 degreeC
Test	EMI Line conduction & Radiated emission	Humid.	40 %RH
		Tested by	M.Kondo

1. Line conduction



2. Radiated emission



Conditions

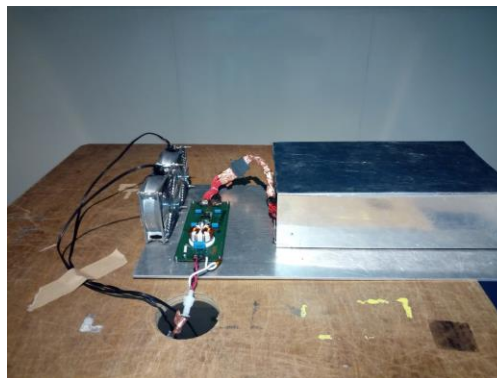
Test : EMI
Model Name : CHS380 Series

Photographs of Test Set-Up

LINE CONDUCTION



RADIATED EMISSION



Testing circuitry

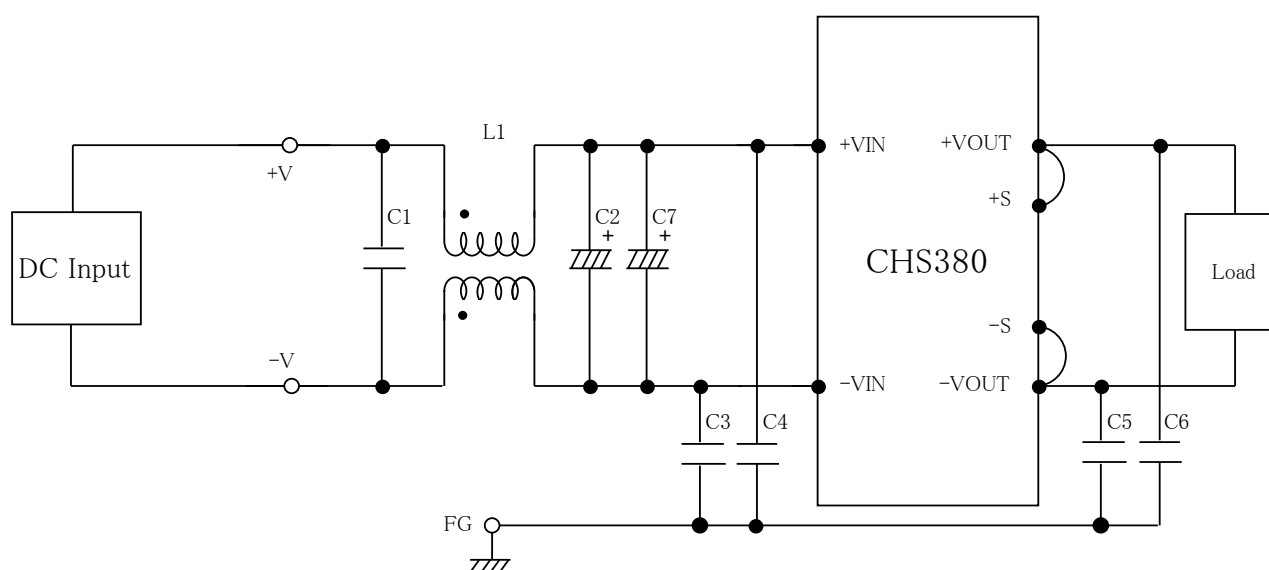


Fig.1 Testing circuitry

L1 : 1mH SC-20-10JH (TOKIN)
C1 : 250V 2.2 μ F FPD22E225J4 (NITSUKO)
C2,C7 : 100V 100 μ F PWseries (nichicon)
C3,C4 : 630V 0.068 μ F FPD22J683J4(NITSUKO)
C5,C6 : 630V 0.033 μ F FPD22J333J4(NITSUKO)