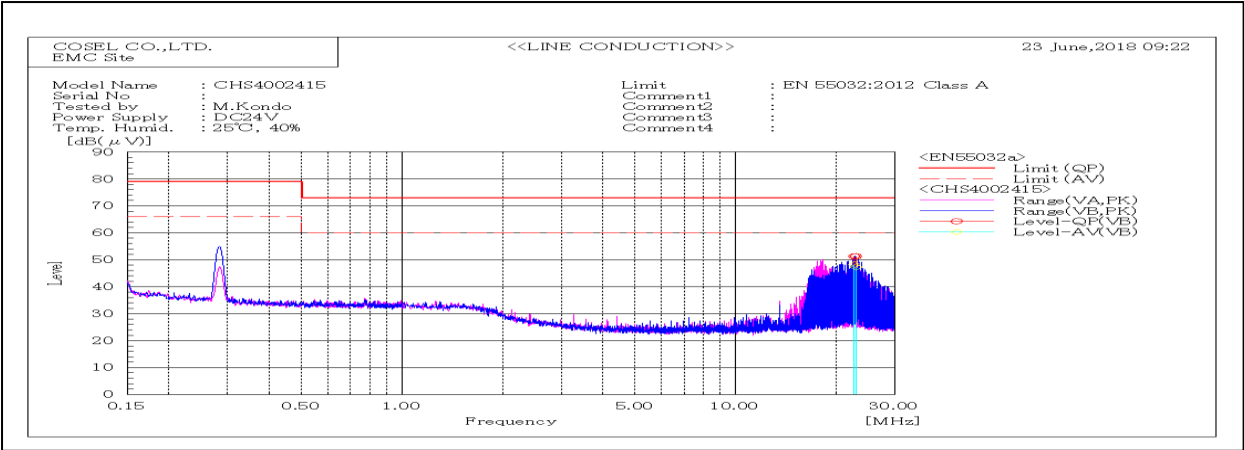
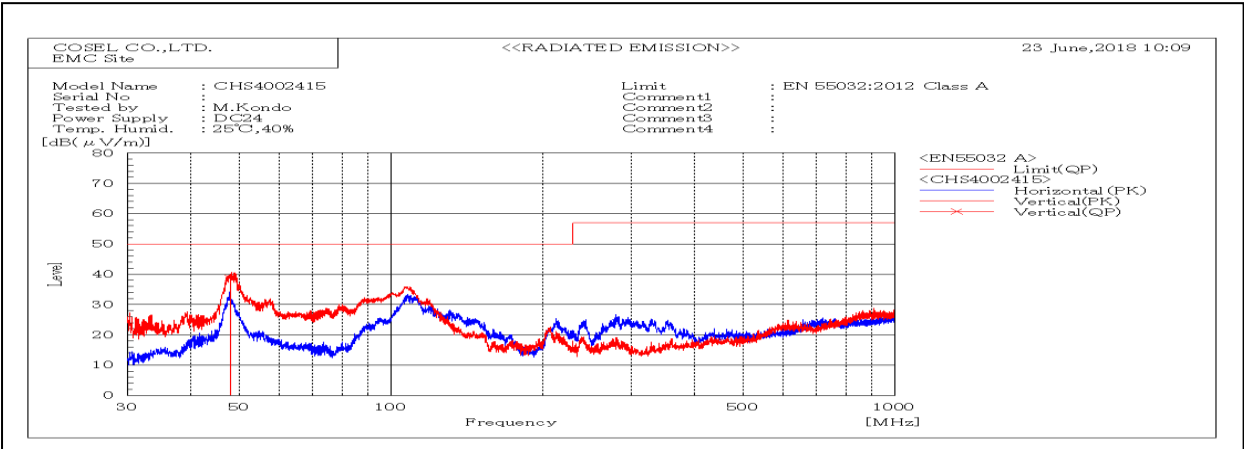


DATA SHEET		Date	26-Jun-18
Model	CHS4002415	Temp.	25 degreeC
Test	EMI Line conduction & Radiated emission	Humid.	40 %RH
		Tested by	M.Kondo



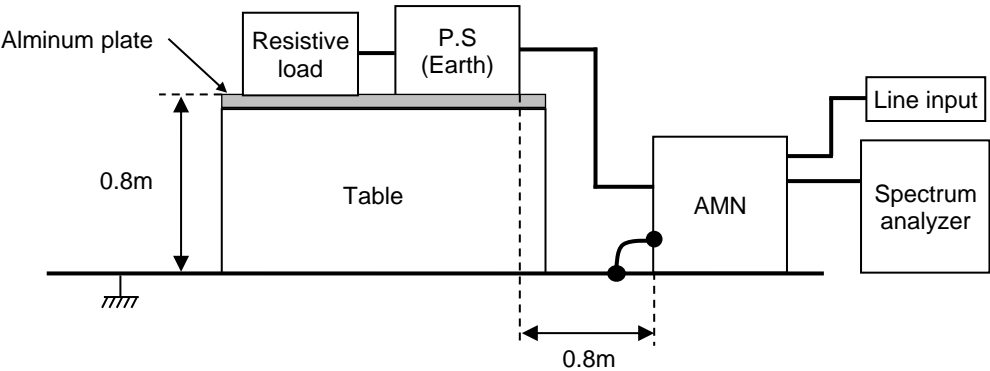
Frequency MHz	Line Phase	Level dB(μV)		Limit dB(μV)		Margin dB		Pass/Fail	Remark
		QP	AV	QP	AV	QP	AV		
22.67845	VB	51.3	48.3	73	60	21.7	11.7	Pass	
22.95035	VB	51.3	47.3	73	60	21.7	12.7	Pass	



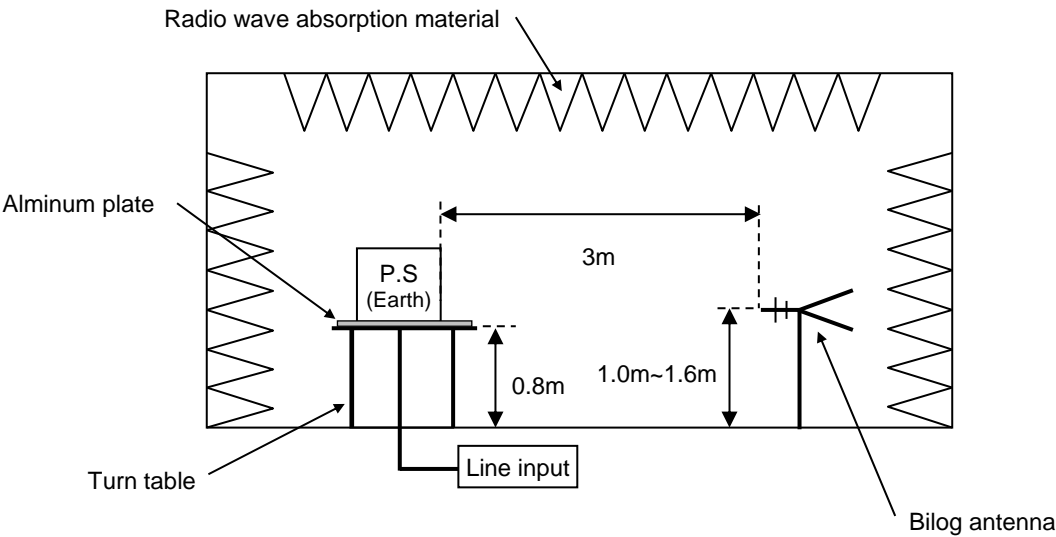
Frequency MHz	Polarizati on	Stabilit y	Reading dB(μV)	Level dB(μV/m)	Limit dB(μV/m)	Margin dB	Pass/ Fail	Height cm	Angle deg	Remark
			QP	QP	QP	QP				
48.05	V	Stable	54.1	38.7	50	11.3	Pass	146	330	

DATA SHEET		Date	26-Jun-18
Model	Circuit used for measurement	Temp.	25 degreeC
Test	EMI Line conduction & Radiated emission	Humid.	40 %RH
		Tested by	M.Kondo

1. Line conduction



2. Radiated emission



## Conditions

Test : EMI  
Model Name : CHS40024□

○Photographs of Test Set-Up

### LINE CONDUCTION



### RADIATED EMISSION



○Testing circuitry

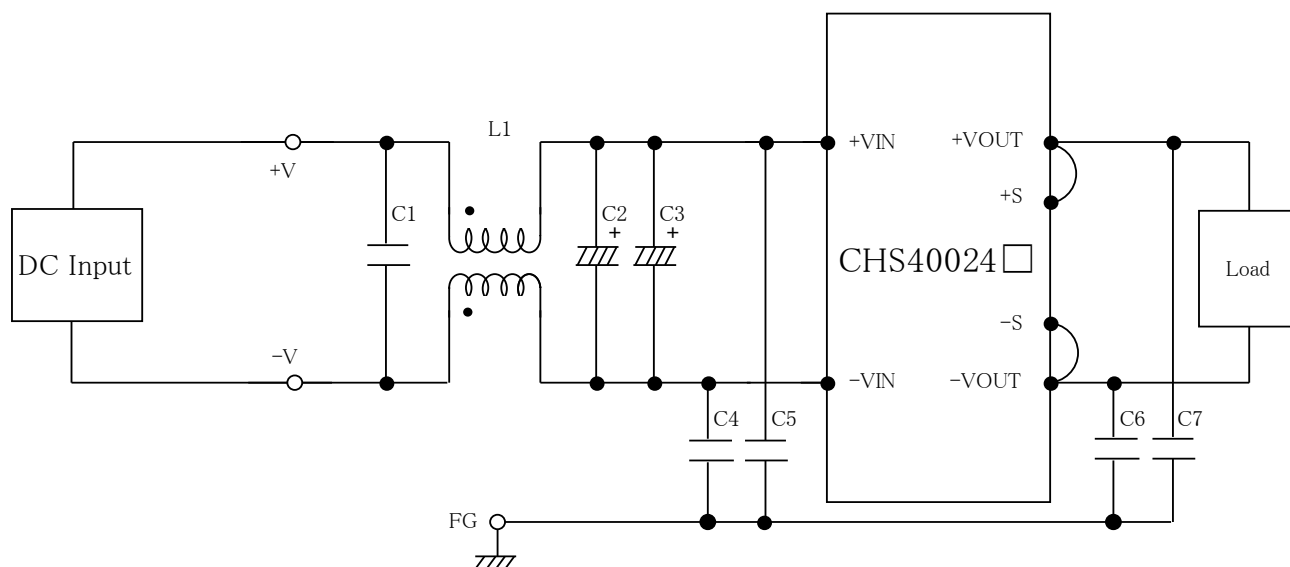


Fig.1 Testing circuitry

L1 : 1mH SC-30-100 (TOKIN)  
C1 : 250V 2.2  $\mu$ F FPD22E225J4 (NITSUKO)  
C2,C3 : 50V 330  $\mu$ F PWseries (nichicon)  
C4,C5 : 630V 0.068  $\mu$ F FPD22J683J4 (NITSUKO)  
C6,C7 : 630V 0.033  $\mu$ F FPD22J333J4 (NITSUKO)