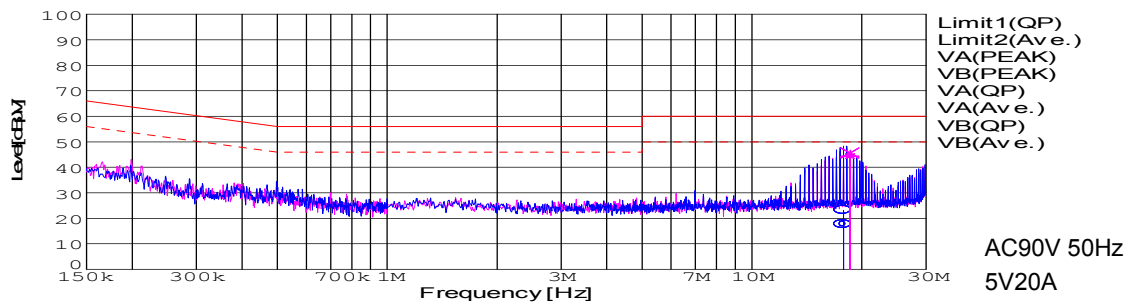


DATA SHEET		Date	18-Nov-08
Model	DBS100A05	Temp.	25 degreeC
Test	EMI Line conduction & Radiated emission	Humid.	45 %RH
		Tested by	Mori

LINE CONDUCTION

Model Name : DBS100A05
 Model No. :
 Serial No. :
 Points : 2
 Detector : PEAK/QP/Ave.
 Line Mode : VA/VB
 Power Supply :
 Limit1: [VCCI] Class B(QP)
 Limit2: [VCCI] Class B(Ave.)

Temp. : 25
 Humi. : 45
 Date : 2008/11/18 20:43
 Test Equip. : R3132,ESPC
 Load Line : 100mm
 Comment : Mori

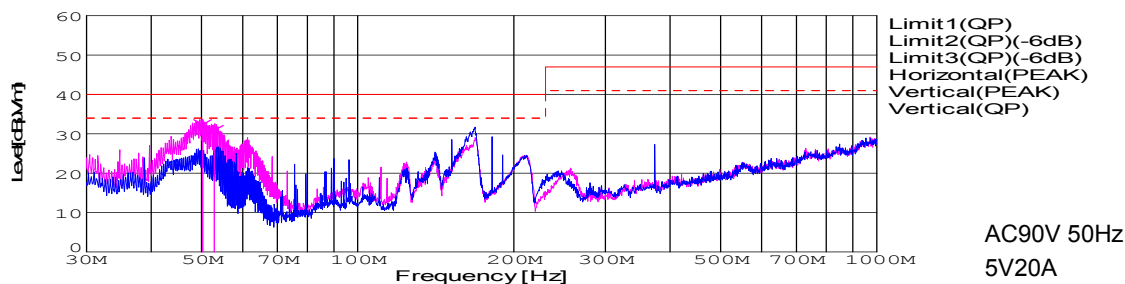


Frequency [MHz]	Meter Reading (Ave.) [dBuV]	Meter Reading (QP) [dBuV]	Factor [dB]	Level(Ave.) [dBuV]	Level(QP) [dBuV]	Line	Limit(Ave.) [dBuV]	Limit(QP) [dBuV]	Margin(Ave.) [dB]	Margin(QP) [dB]
17.8132	7.4	12.9	10.2	17.6	23.1	VA	50	60	32.4	36.9
18.5516	34.1	35.4	10.2	44.3	45.6	VB	50	60	5.7	14.4

RADIATED EMISSION

Model Name : DBS100A05
 Model No. :
 Serial No. :
 Points : 2
 Detector : PEAK/QP
 Polarization : Vertical
 Power Supply : AC90V
 Limit1: [VCCI] Class B<3m>
 Limit2: [VCCI] Class B<3m>(-6dB)
 Limit3: [VCCI] Class B<3m>(-6dB)

Temp. : 25
 Humi. : 45
 Date : 2008/11/18 21:24
 Test Equip. : R3132,ESPC
 Load Line : 100mm
 Comment : Mori



Frequency [MHz]	Meter Reading (QP) [dBuV]	Ant. Type	Antenna Factor [dB/m]	Cable & Preamp [dB]	Level(QP) [dBuV/m]	Angle [°]	Height [cm]	Polar.	Limit [dBuV/m]	Margin [dB]
50.218	56.9	BL	7.6	-32.1	32.4	58	118	Vert.	40	7.6
52.921	56.5	BL	6.5	-32.1	30.9	49	100	Vert.	40	9.1

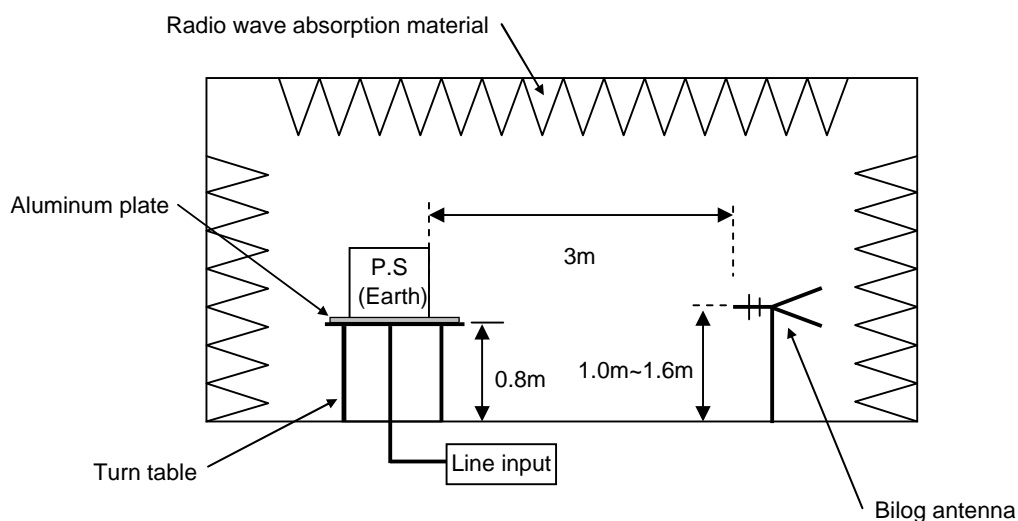
DATA SHEET

Model	Circuit used for measurement
Test	EMI Line conduction & Radiated emission

1. Line conduction



2. Radiated emission

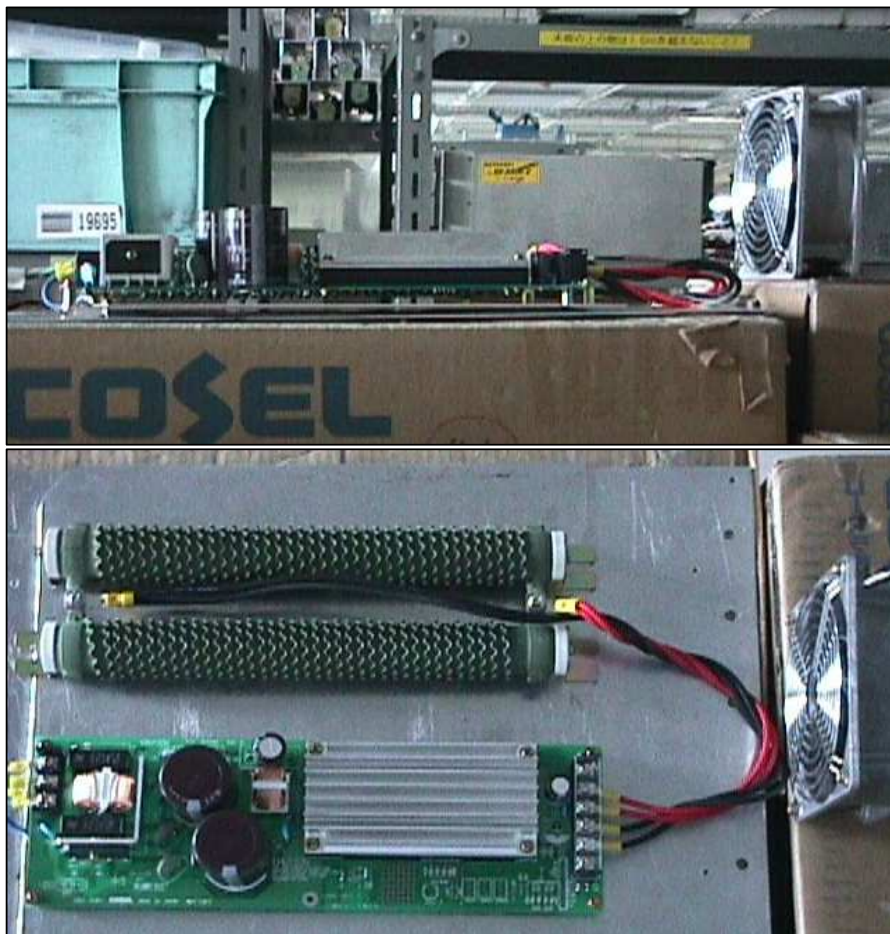


Conditions

Date 2008/11/18

Test : LINE CONDUCTION
Model Name : DBS100A/150A

○Photographs of Test Set-Up



○Testing circuitry

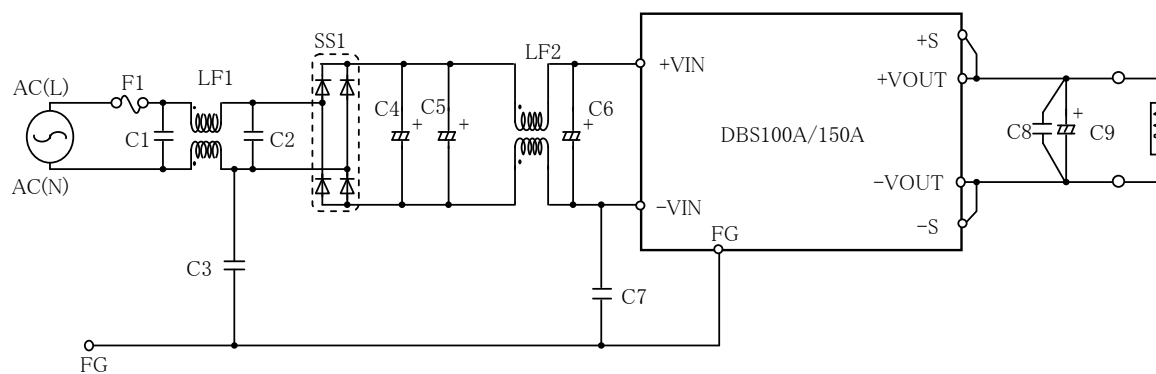


Fig. Testing circuitry

- LF1 : 2.0mH 5.0A Common mode Choke Coil
- LF2 : 1.0mH 5.0A Common mode Choke Coil
- SS1 : 25A 600V Bridge diode
- C1、C2 : 250V 0.47 μ F Film capacitor
- C4、C5 : 250V 1000 μ F Electrolytic capacitor
- C6 : 250V 47 μ F Electrolytic capacitor
- C3、C7 : 250V 3300pF Ceramic capacitor
- C8 : 50V 0.1 μ F Film capacitor
- C9 : 10V 2200 μ F (DBS100A05)
: 25V 1000 μ F (DBS100A13R8, DBS150A12/15)
: 35V 470 μ F (DBS150A24)

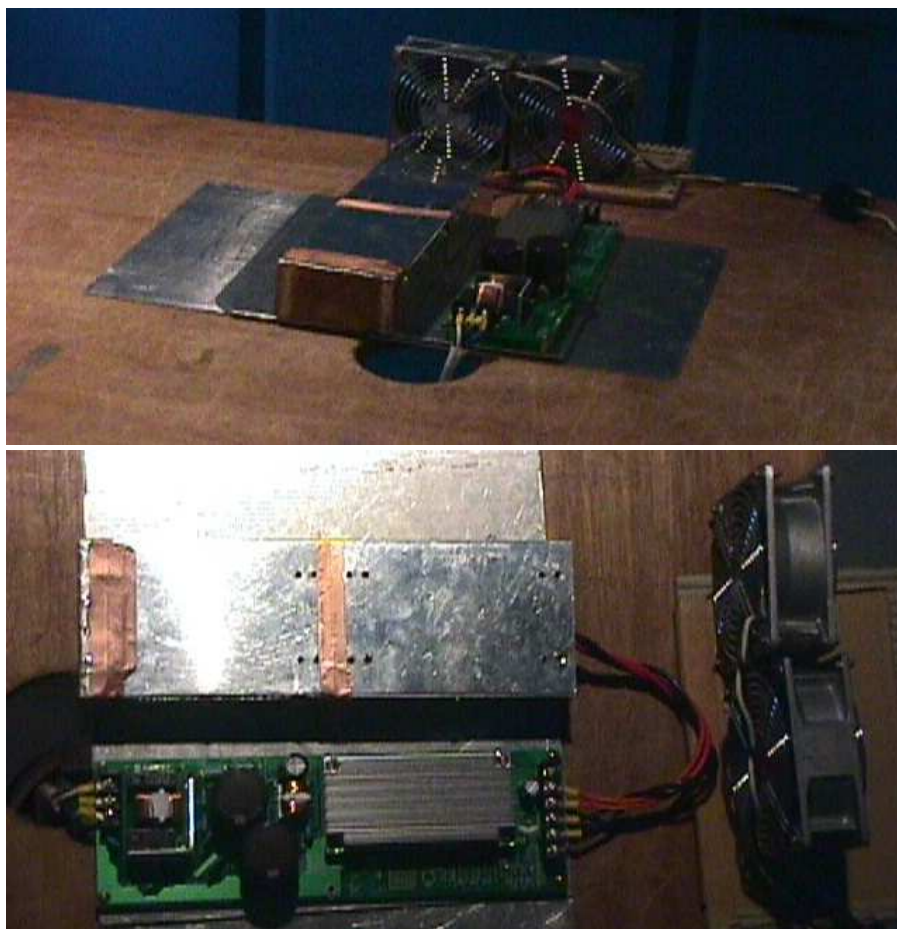
Conditions

Date 2008/11/18

Test : RADIATED EMISSION

Model Name : DBS100A/150A

Photographs of Test Set-Up



Testing circuitry

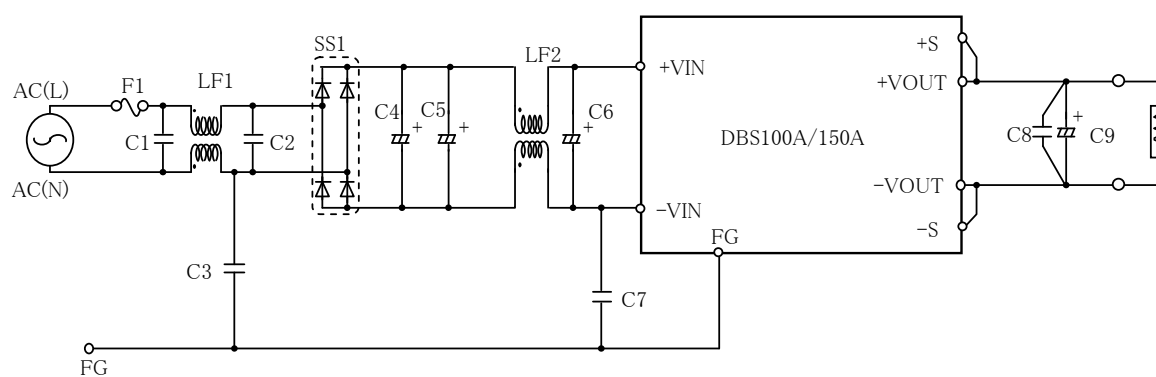


Fig. Testing circuitry

- LF1 : 2.0mH 5.0A Common mode Choke Coil
- LF2 : 1.0mH 5.0A Common mode Choke Coil
- SS1 : 25A 600V Bridge diode
- C1 、 C2 : 250V 0.47 μ F Film capacitor
- C4 、 C5 : 250V 1000 μ F Electrolytic capacitor
- C6 : 250V 47 μ F Electrolytic capacitor
- C3 、 C7 : 250V 3300pF Ceramic capacitor
- C8 : 50V 0.1 μ F Film capacitor
- C9 : 10V 2200 μ F (DBS100A05)
- : 25V 1000 μ F (DBS100A13R8, DBS150A12/15)
- 35V 470 μ F (DBS150A24)