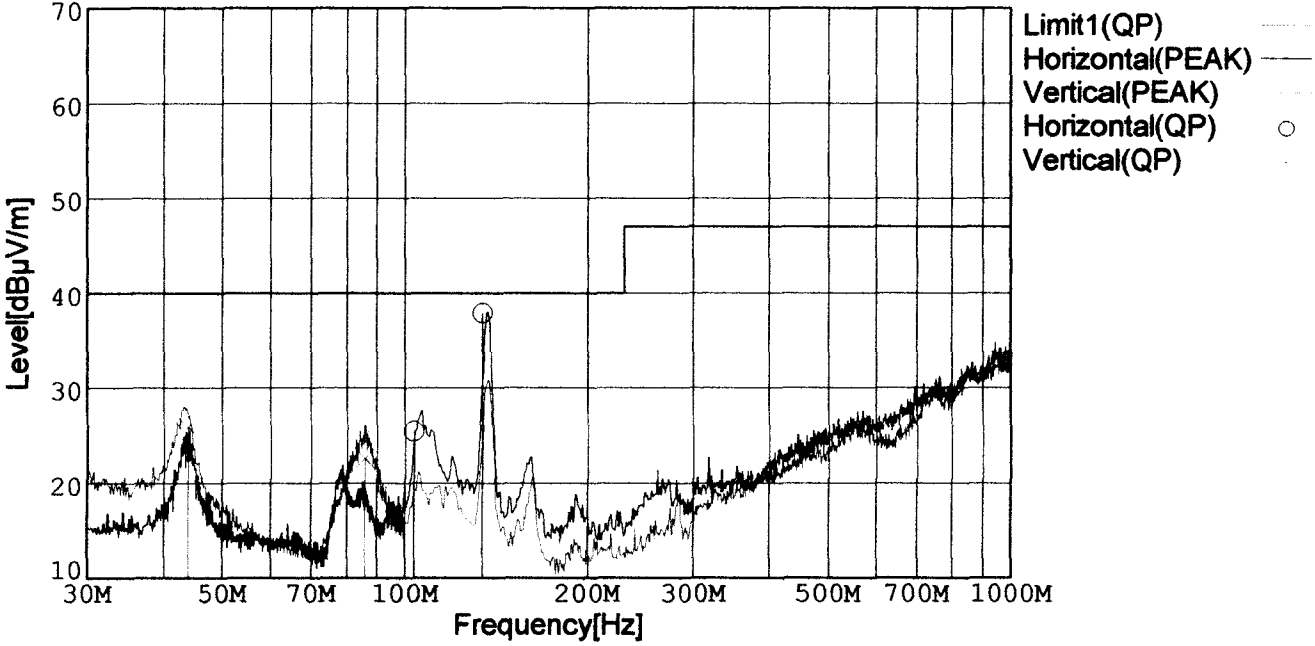




**RADIATED EMISSION**

Model Name	: DBS400B07	Temperature	: 25deg C
Model No.	:	Humidity	: 45%
Serial No.	:	Comment	: Vin=AC230V, Io=100%
Detector	: PEAK/QP	Date	: 2000/7/20 9:47
Points	: 4	EMI Receiver(s)	: R3261A,ESPC
Polarization	: Hori. & Vert.		
Limit1: [EN 55022] Class B<3m>			



Frequency [MHz]	Meter Reading [dBμV]	Antenna Factor[dB]	Cable Loss[dB]	Level [dBμV/m]	Angle[°]	Height [cm]	Pola.	Limit [dBμV/m]	Margin [dB]
134.075	51.6	-27.9	14.2	37.9	63	147	Hori.	40.0	2.1
103.190	40.7	-28.2	13.0	25.5	37	160	Hori.	40.0	14.5
43.815	40.4	-28.7	14.2	25.9	121	145	Vert.	40.0	14.1
85.687	39.1	-28.3	11.8	22.6	50	101	Vert.	40.0	17.4

7/20/00

# Conditions

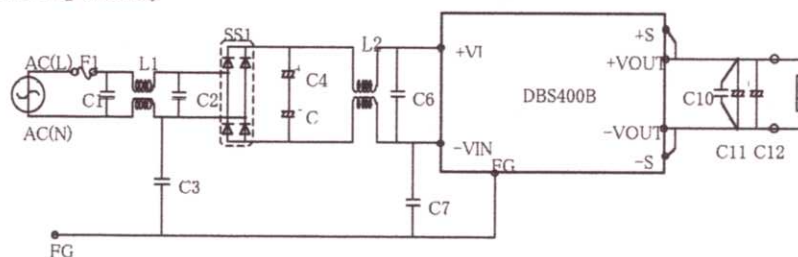
Date 2000/8/11

Test : RADIATED EMISSION  
Model Name : DBS400B

## ○Photographs of Test Set-Up



## ○Testing circuitry



- F1 : CES15 (SOC:15A 250V)
- C1、C2 : CFJC22E474M (NITSUKO:0.47  $\mu$ F 250V)
- C6 : CFJC22E224M (NITSUKO:0.22  $\mu$ F 250V)
- C4、C5 : LGQ2E102M (NICHICON:1000  $\mu$ F 250V)
- C3、C7 : DE1207-2E332M-KH (MURATA:3300pF 250V)
- L1 : SC-05-20J (TOKIN:2.0mH min 5.0A)
- L2 : SS28H-25045 (TOKIN:4.5mH min 2.5A)
- SS1 : D25XB60 (SINDENGEN:25A 600V)
- C10 : MDD21H104M5 (NITSUKO:0.1  $\mu$ F 50V)
- C11、C12 : Table 1 (NIPPON CHEMI-CON)

Table 1

MODEL	C11	C12
DBS400B03	LZX10VB3300MK25	LZX10VB3300MK25
DBS400B05, 07	LZX10VB2200MK20	LZX10VB2200MK20
DBS400B12	LZX25VB1000MK20	LZX25VB1000MK20
DBS400B15, 18	LZX35VB1000MK25	LZX35VB1000MK25
DBS400B24, 28	LZY50VB820MK40	-

Fig 1. Testing circuitry

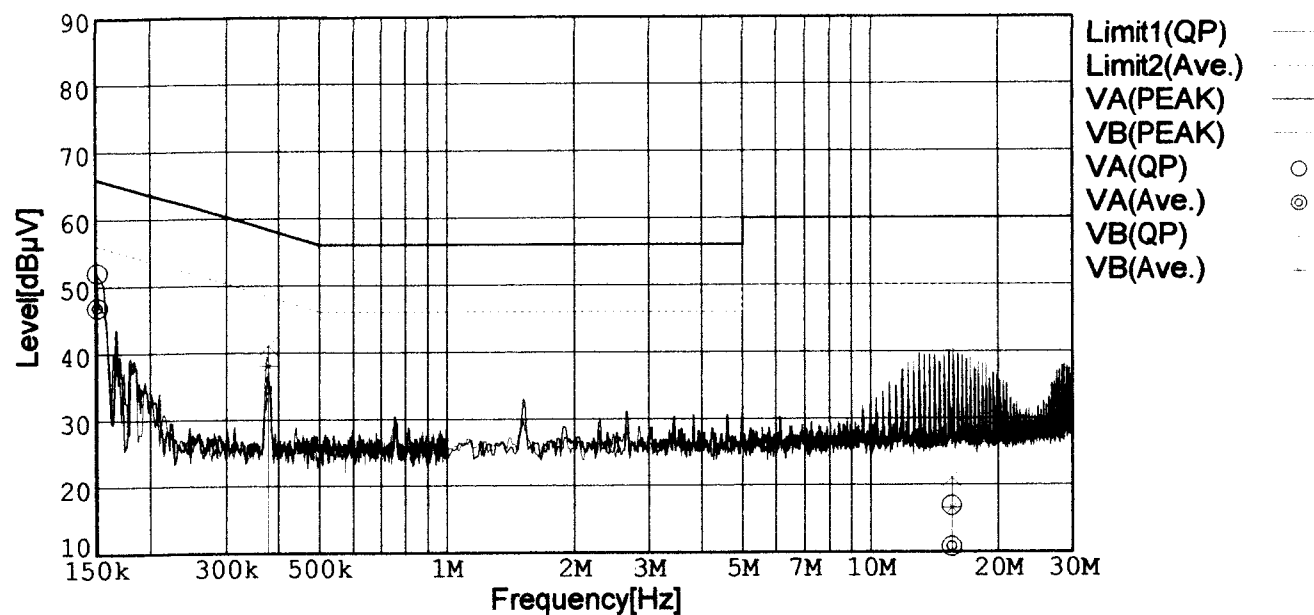


# LINE CONDUCTION

Model Name : DBS400B07  
 Model No. :  
 Serial No. :  
 Detector : PEAK/QP/Ave.  
 Points : 3  
 Line Mode : VA/VB

Temperature : 25deg C  
 Humidity : 45%  
 Comment : Vin=AC230V, Io=100%  
 Date : 2000/7/20 10:20  
 EMI Receiver(s) : R3261A,ESPC

Limit1: [EN 55022] Class B(QP)  
 Limit2: [EN 55022] Class B(Ave.)



Frequency [MHz]	Meter Reading (QP) [dBμV]	Meter Reading (Ave.) [dBμV]	Factor [dB]	Level (QP) [dBμV]	Level (Ave.) [dBμV]	Line	Limit (QP) [dBμV]	Limit (Ave.) [dBμV]	Margin (QP)[dB]	Margin (Ave.) [dB]
0.1509	41.7	36.5	10.3	52.0	46.8	VA	65.9	55.9	13.9	9.1
0.3774	30.8	27.8	10.2	41.0	38.0	VB	58.3	48.3	17.3	10.3

# Conditions

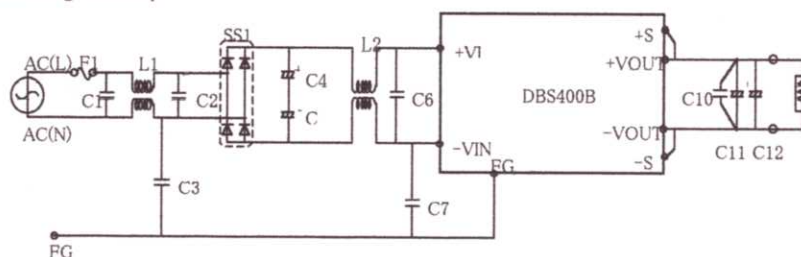
Date 2000/8/11

Test : LINE CONDUCTION  
Model Name : DBS400B

## Photographs of Test Set-Up



## Testing circuitry



- F1 : CES15 (SOC:15A 250V)  
C1、C2 : CFJC22E474M (NITSUKO:0.47  $\mu$ F 250V)  
C6 : CFJC22E224M (NITSUKO:0.22  $\mu$ F 250V)  
C4、C5 : LGQ2E102M (NICHICON:1000  $\mu$ F 250V)  
C3、C7 : DE1207-2E332M-KH (MURATA:3300pF 250V)  
L1 : SC-05-20J (TOKIN:2.0mH min 5.0A)  
L2 : SS28H-25045 (TOKIN:4.5mH min 2.5A)  
SS1 : D25XB60 (SINDENGEN:25A 600V)  
C10 : MDD21H104M5 (NITSUKO:0.1  $\mu$ F 50V)  
C11、C12 : Table 1(NIPPON CHEMI-CON)

Table 1

MODEL	C11	C12
DBS400B03	LZX10VB3300MK25	LZX10VB3300MK25
DBS400B05, 07	LZX10VB2200MK20	LZX10VB2200MK20
DBS400B12	LZX25VB1000MK20	LZX25VB1000MK20
DBS400B15, 18	LZX35VB1000MK25	LZX35VB1000MK25
DBS400B24, 28	LZY50VB820MK40	-

Fig 1. Testing circuitry