

DATA SHEET		Date	08-Oct-08
Model	DBS700B36	Temp.	25 degreeC
Test	EMI Line conduction & Radiated emission	Humid.	45 %RH
		Tested by	Furukawa

LINE CONDUCTION

Model Name : DBS700B36

Model No. :

Serial No. :

Points : 2

Detector : PEAK/QP/Ave.

Line Mode : VA/VB

Power Supply : AC230V 50Hz

Limit1: [EN 55022] Class A(QP)

Limit2: [EN 55022] Class A(Ave.)

Temp. : 25

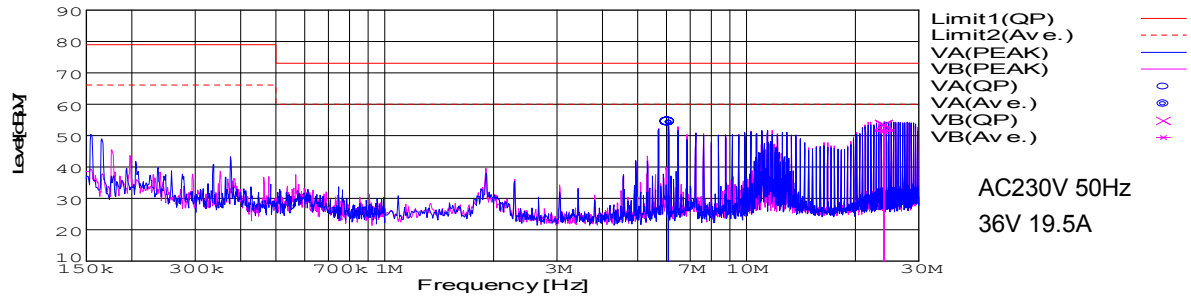
Humi. : 45

Date : 2008/10/8 10:23

Test Equip. : R3132,ESPC

Load Line : 100mm

Comment : Furukawa



Frequency [MHz]	Meter Reading (Ave.) [dBuV]	Meter Reading (QP) [dBuV]	Factor [dB]	Level (Ave.) [dBuV]	Level (QP) [dBuV]	Line	Limit (Ave.) [dBuV]	Limit (QP) [dBuV]	Margin (Ave.) [dB]	Margin (QP) [dB]
6.0965	44.2	44.5	10	54.2	54.5	VA	60	73	5.8	18.5
24.0017	41.1	43.1	10.3	51.4	53.4	VB	60	73	8.6	19.6

RADIATED EMISSION

Model Name : DBS700B36

Model No. :

Serial No. :

Points : 3

Detector : PEAK/QP

Polarization : Vertical

Power Supply : AC230V 50Hz

Limit: [EN 55022] Class A<3m>

Temp. : 25

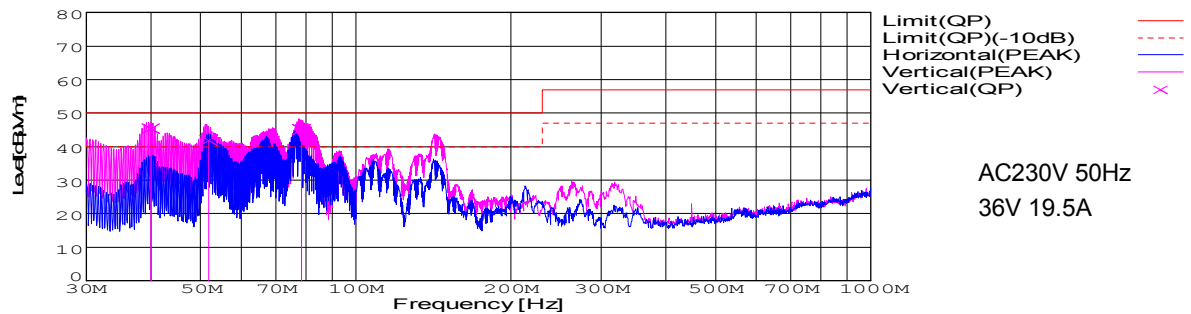
Humi. : 45

Date : 2008/10/8 14:12

Test Equip. : R3132,ESPC

Load Line : 100mm

Comment : Furukaw



Frequency [MHz]	Meter Reading (QP) [dBuV]	Ant. Type	Antenna Factor [dB/m]	Cable & Preamp [dB]	Level (QP) [dBuV/m]	Angle [°]	Height [cm]	Polar.	Limit [dBuV/m]	Margin [dB]
78.48	70.2	BL	6.8	-31.9	45.1	108	114	Vert.	50	4.9
51.806	67	BL	6.9	-32.1	41.8	114	113	Vert.	50	8.2
40.003	64.5	BL	13	-32.2	45.3	6	102	Vert.	50	4.7

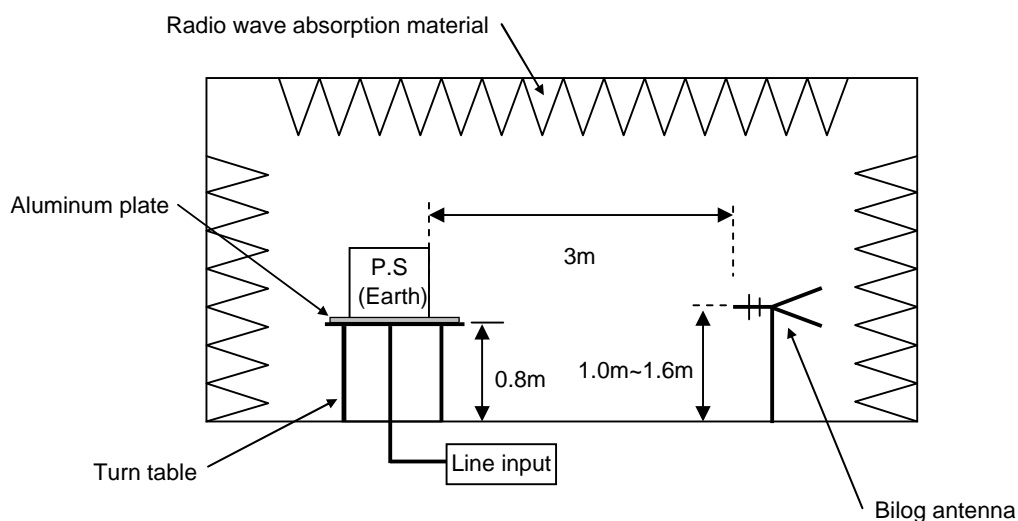
DATA SHEET

Model	Circuit used for measurement
Test	EMI Line conduction & Radiated emission

1. Line conduction



2. Radiated emission



Test: EMI

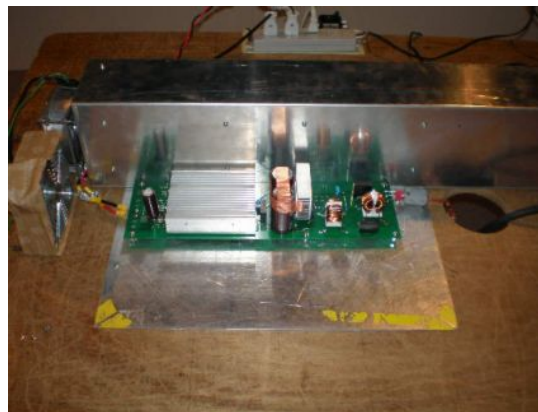
Model Name: DBS700B Series

○ Photographs of Test Set-Up

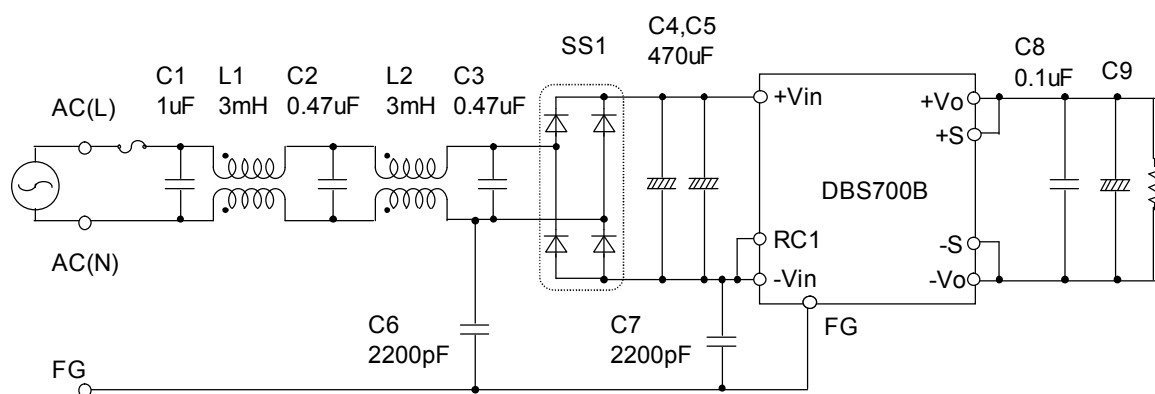
LINE CONDUCTION



RADIATED EMISSION



○ Test circuit



L1,L2 : SC-10-30 (NEC TOKIN)
 SS1 : D25XB60(SINDENGEN)
 C9 : DBS700B24 50V2200uF
 DBS700B28 50V2200uF
 DBS700B36 50V2200uF
 DBS700B48 80V1000uF