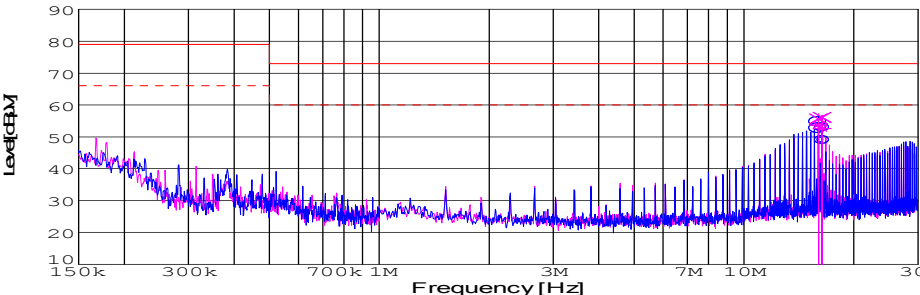
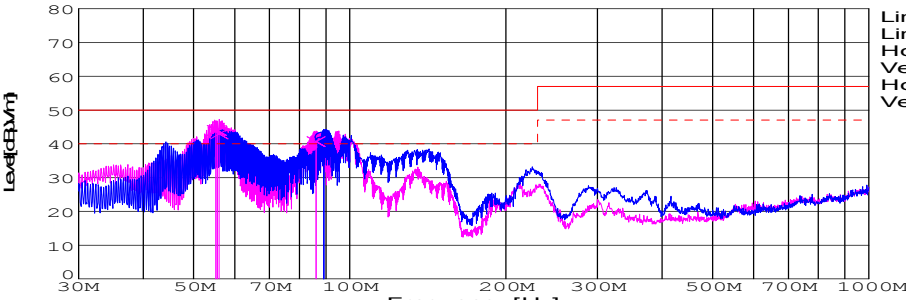


| DATA SHEET   |  |                           |                          |                    |                  |      | Date  | 16-Jun-08        |                   |                 |
|--|--|---------------------------|--------------------------|--------------------|------------------|------|---|------------------|-------------------|-----------------|
| Model  | DBS700B48                                  |                           |                          |                    |                  |      | Temp.   | 25 degreeC       |                   |                 |
| Test   | EMI<br>Line conduction & Radiated emission |                           |                          |                    |                  |      | Humid.  | 44 %RH           |                   |                 |
|  |  |                           |                          |                    |                  |      | Tested by   | E.Nagata         |                   |                 |
| LINE CONDUCTION  |  |                           |                          |                    |                  |      |   |                  |                   |                 |
| Model Name : DBS700B48   |  |                           | Temp. : 25               |                    |                  | :    |   |                  |                   |                 |
| Model No. :  |  |                           | Humi. : 44               |                    |                  | :    |   |                  |                   |                 |
| Serial No. :   |  |                           | Date : 2008/6/11 13:08   |                    |                  | :    |   |                  |                   |                 |
| Points : 2   |  |                           | Test Equip. : R3132,ESPC |                    |                  | :    |   |                  |                   |                 |
| Detector : PEAK/QP/Ave.  |  |                           | Load Line : 100mm        |                    |                  | :    |   |                  |                   |                 |
| Line Mode : VA/VB  |  |                           | Comment : E.Nagata       |                    |                  | :    |   |                  |                   |                 |
| Power Supply : AC230V 50Hz   |  |                           | 48V14.5A                 |                    |                  | :    |   |                  |                   |                 |
| Limit1: [EN 55022] Class A(QP)   |  |                           |                          |                    |                  |      |   |                  |                   |                 |
| Limit2: [EN 55022] Class A(Ave.)   |  |                           |                          |                    |                  |      |   |                  |                   |                 |
|  |  |                           |                          |                    |                  |      | Limit1(QP) ———<br>Limit2(Ave.) - - -<br>VA(PEAK) ———<br>VB(PEAK) ———<br>VA(QP) ○<br>VA(Ave.) ○<br>VB(QP) ×<br>VB(Ave.) ×<br>AC230V 50Hz<br>48V14.5A |                  |                   |                 |
| Frequency [MHz]  | Meter Reading (Ave.) [dBuV]                | Meter Reading (QP) [dBuV] | Factor [dB]              | Level(Ave.) [dBuV] | Level(QP) [dBuV] | Line | Limit(Ave.) [dBuV]  | Limit(QP) [dBuV] | Margin(Ave.) [dB] | Margin(QP) [dB] |
| 16.001   | 42.4                                       | 44.4                      | 10.2                     | 52.6               | 54.6             | VA   | 60  | 73               | 7.4               | 18.4            |
| 16.3824  | 38.7                                       | 42.8                      | 10.2                     | 48.9               | 53               | VA   | 60  | 73               | 11.1              | 20              |
| 16.001   | 43.5                                       | 45.5                      | 10.2                     | 53.7               | 55.7             | VB   | 60  | 73               | 6.3               | 17.3            |
| 16.3812  | 42.4                                       | 45.9                      | 10.2                     | 52.6               | 56.1             | VB   | 60  | 73               | 7.4               | 16.9            |

|  |                          |           |                          |                     |                    |           |  |        |                |             |
|--|--------------------------|-----------|--------------------------|---------------------|--------------------|-----------|--|--------|----------------|-------------|
| RADIATED EMISSION  |                          |           |                          |                     |                    |           |  |        |                |             |
| Model Name : DBS700B48   |                          |           | Temp. : 25               |                     |                    | :         |  |        |                |             |
| Model No. :  |                          |           | Humi. : 44               |                     |                    | :         |  |        |                |             |
| Serial No. :   |                          |           | Date : 2008/6/16 19:10   |                     |                    | :         |  |        |                |             |
| Points : 6   |                          |           | Test Equip. : R3132,ESPC |                     |                    | :         |  |        |                |             |
| Detector : PEAK/QP   |                          |           | Load Line : 100mm        |                     |                    | :         |  |        |                |             |
| Polarization : Hori. & Vert.   |                          |           | Comment : E.Nagata       |                     |                    | :         |  |        |                |             |
| Power Supply : AC230V 50Hz   |                          |           | 48V14.5A                 |                     |                    | :         |  |        |                |             |
| Limit: [EN 55022] Class A<3m>  |                          |           |                          |                     |                    |           |  |        |                |             |
|  |                          |           |                          |                     |                    |           | Limit(QP) ———<br>Limit(QP)(-10dB) - - -<br>Horizontal(PEAK) ———<br>Vertical(PEAK) ———<br>Horizontal(QP) ○<br>Vertical(QP) ×<br>AC230V 50Hz<br>48V14.5A |        |                |             |
| Frequency [MHz]  | MeterReading (QP) [dBuV] | Ant. Type | Antenna Factor [dB/m]    | Cable & Preamp [dB] | Level(QP) [dBuV/m] | Angle [°] | Height [cm]  | Polar. | Limit [dBuV/m] | Margin [dB] |
| 89.144   | 64.1                     | BL        | 8.4                      | -31.9               | 40.6               | 342       | 119  | Hori.  | 50             | 9.4         |
| 89.139   | 65.3                     | BL        | 8.4                      | -31.9               | 41.8               | 347       | 129  | Hori.  | 50             | 8.2         |
| 55.24  | 70.5                     | BL        | 5.6                      | -32.1               | 44                 | 325       | 109  | Vert.  | 50             | 6           |
| 55.615   | 70.5                     | BL        | 5.5                      | -32.1               | 43.9               | 106       | 123  | Vert.  | 50             | 6.1         |
| 56.009   | 69.7                     | BL        | 5.4                      | -32.1               | 43                 | 346       | 104  | Vert.  | 50             | 7           |
| 86.092   | 64.5                     | BL        | 8.1                      | -31.9               | 40.7               | 348       | 101  | Vert.  | 50             | 9.3         |

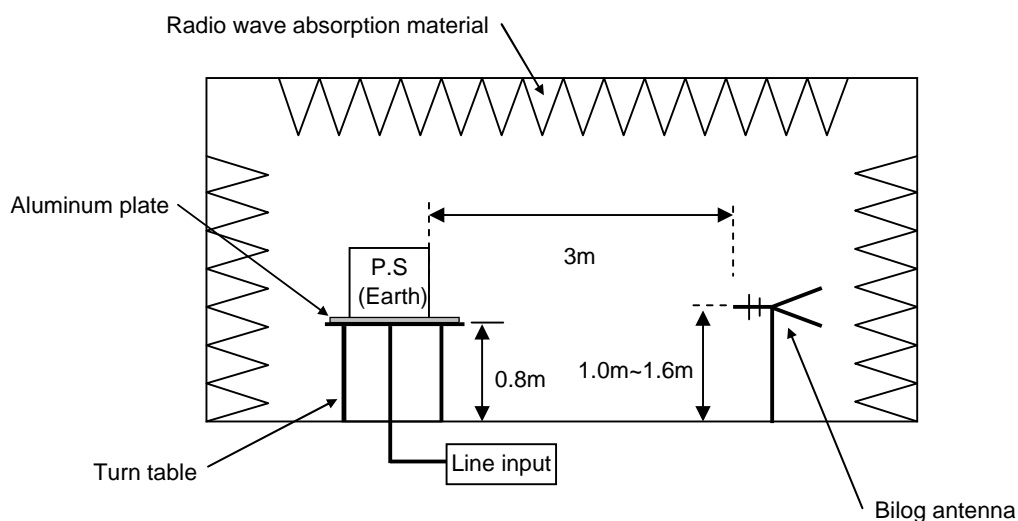
## DATA SHEET

|       |  |
|-------|--|
| Model | Circuit used for measurement               |
| Test  | EMI<br>Line conduction & Radiated emission |

### 1. Line conduction



### 2. Radiated emission



Test: EMI

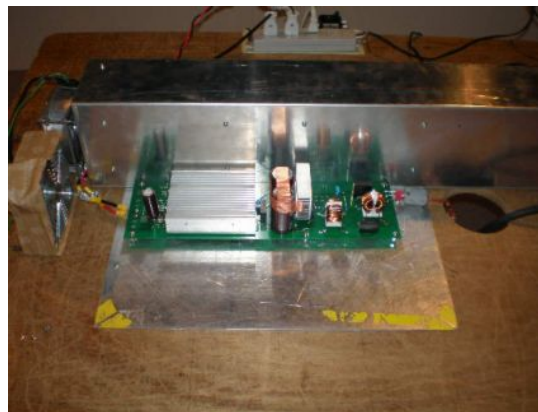
Model Name: DBS700B Series

## ○ Photographs of Test Set-Up

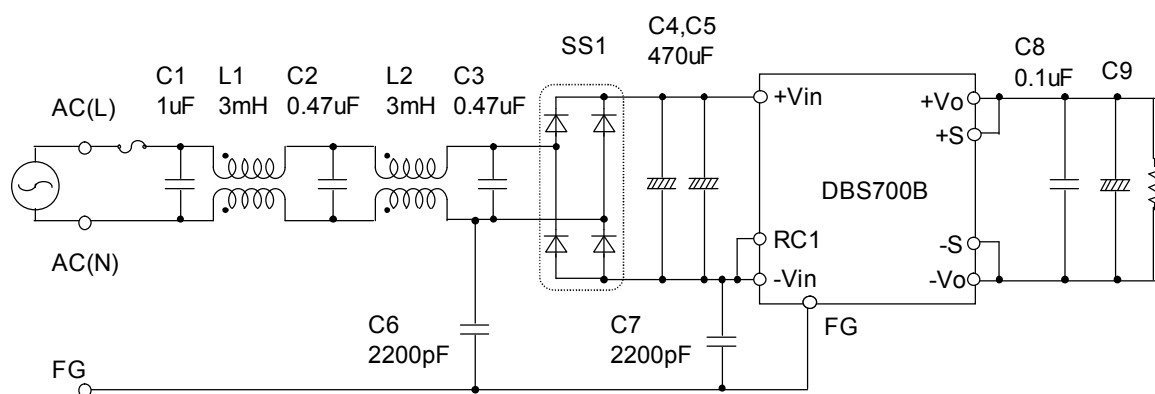
### LINE CONDUCTION



### RADIATED EMISSION



## ○ Test circuit



L1,L2 : SC-10-30 (NEC TOKIN)  
 SS1 : D25XB60(SINDENGEN)  
 C9 : DBS700B24 50V2200uF  
       DBS700B28 50V2200uF  
       DBS700B36 50V2200uF  
       DBS700B48 80V1000uF