



## EMI/EMS Test Result

Model Name : DCS1400B series

Approved : Junichi Hatagishi

The EUT is operated with following condition during EMI/EMS test.

Input Voltage : Rated Voltage  
Output Current : Rated Current  
Ambient Temperature : 25°C ± 10°C

Prepared : Keigo Terada

#	Subject	Reference standard	Test Condition	Criteria *1	Result
1	EMI	Conducted Emission	EN55011, EN55032 Class A CISPR11, CISPR32 Class A FCC Part15, FCC Part18 Class A VCCI Class A Testing circuitry Fig. 1	-	Pass
2		Radiated Emission	EN55011, EN55032 Class A CISPR11, CISPR32 Class A FCC Part15, FCC Part18 Class A VCCI Class A Testing circuitry Fig. 1	-	Pass
3	EMS	Electrostatic discharge immunity test	IEC61000-4-2 Contact Discharge : Level 4 (8kV) Air Discharge : Level 4 (15kV) Testing circuitry Fig. 2	A	Pass
4		Radiated, radio-frequency, electromagnetic field immunity test	IEC61000-4-3 10V/m : (80MHz~1.0GHz) 3V/m : (1.4 ~ 2.0GHz) 1V/m : (2.0 ~ 2.7GHz) 80% Amplitude modulated Testing circuitry Fig. 2	A	Pass
5		Electrical fast transient / Burst immunity test	IEC61000-4-4 Level 4 (4kV) Repetition Rate : 5kHz and 100kHz Testing circuitry Fig. 2	A	Pass
6		Surge immunity test	IEC61000-4-5 Line to Line : Level 3 (2kV) Line to Earth : Level 4 (4kV) Testing circuitry Fig. 2	A	Pass

\*1 Definition of Criteria

Criteria A : (1) No output voltage drop with control circuit failure.  
(2) No protection circuit and other circuit malfunction.

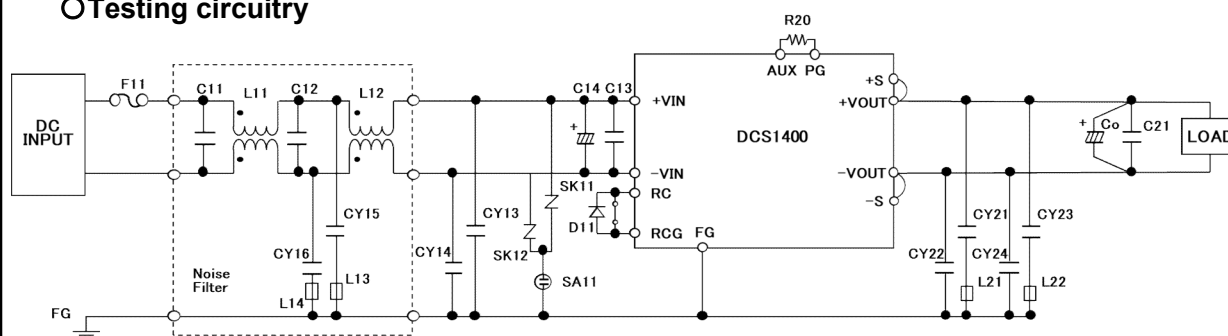
Criteria B : (1) The output voltage is temporary degradation of performance.  
It recovers its normal performance without operator intervention.  
(2) No protection circuit and other circuit failure.

<Notes>

Power supply shall not determine the final equipment performance against EMS test. Therefore we confirmed the output voltage performance only. EMS test should be performed as a final product.

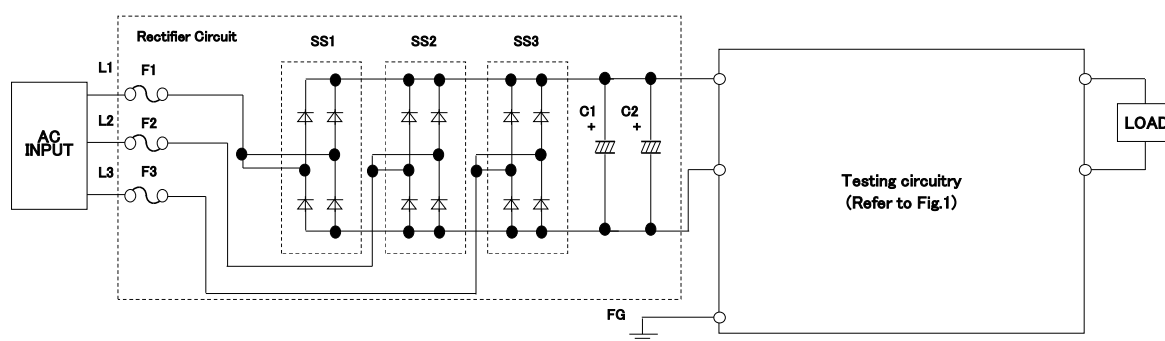


### ○Testing circuitry



F11	:	0505016
L11,L12	:	SCF25XV-150-1R6A010JH
L13,L14	:	Ferrite Bead (K5B T 4x2x2)
C11,C13	:	1.0uF 450V Film Calacitor
C12	:	2.2uF 450V Film Calacitor
C14	:	82uF 450V Electrolytic Capacitor
CY13,CY14	:	2200pF 400V
CY15,CY16	:	1500pF 400V
L21,L22	:	Ferrite Bead (K5B T 4x2x2) (For DCS1400B65 only)
C21	:	1.0uF Ceramic Capacitor
CY21,CY22,CY23,CY24	:	0.01uF 300V (For DCS1400B65 only)
Co	:	DCS1400B12 2200uF 16V Electrolytic Capacitor
	:	DCS1400B24 2200uF 35V Electrolytic Capacitor
	:	DCS1400B28 1000uF 50V Electrolytic Capacitor
	:	DCS1400B36 1000uF 50V Electrolytic Capacitor
	:	DCS1400B48 680uF 63V Electrolytic Capacitor
	:	DCS1400B65 330uF 100V Electrolytic Capacitor
D11	:	CUHS20F30 (For DCS1400B□□-R only)
SA11	:	B88069X2590S102 (For Surge immunity test only)
SK11,SK12	:	TND14-621K (For Surge immunity test only)
R20	:	1100ohm(For EMS test only)

**Fig.1 Testing circuitry**



F1,F2,F3	:	0505016
SS1,SS2,SS3	:	D25XB60
C1,C2	:	ELXS451VSN471MA40S

**Fig.2 EMS Testing circuitry**