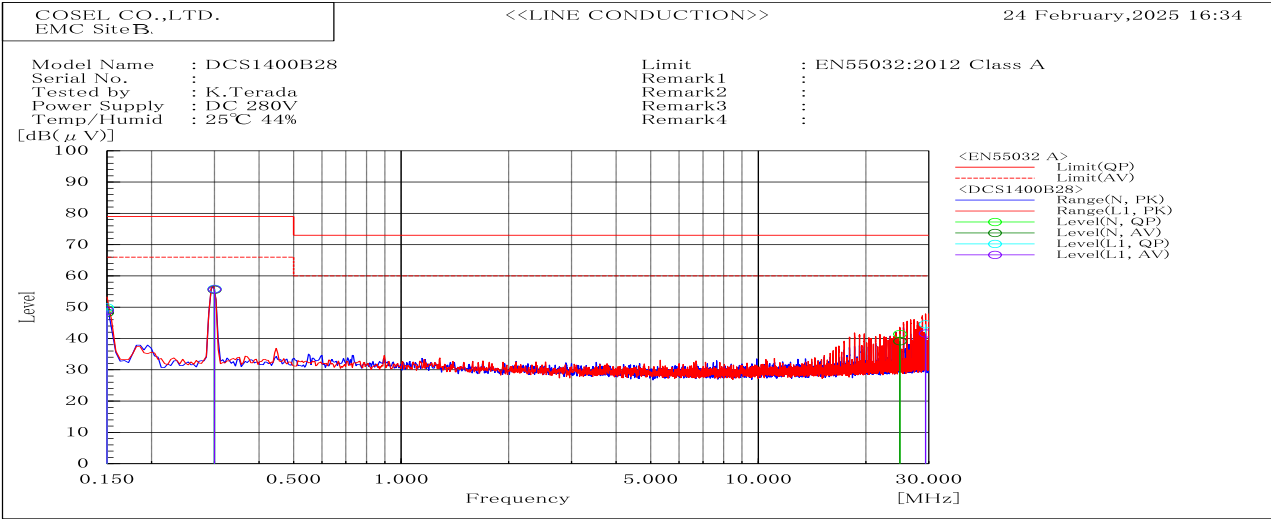
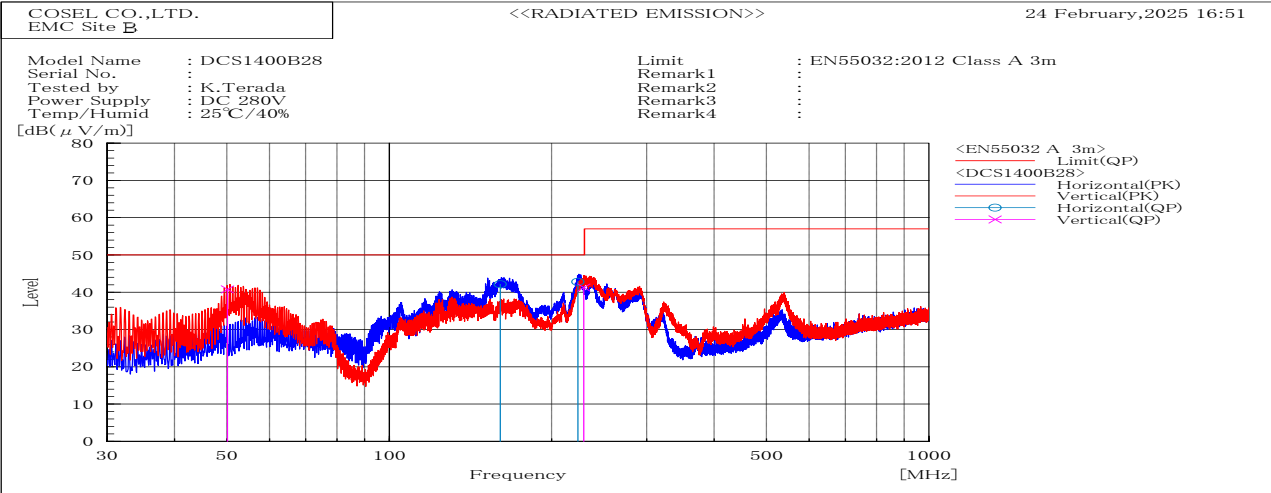


DATA SHEET		Date	15-May-25
Model	DCS1400B28	Temp.	25 degreeC
Test	EMI Line conduction & Radiated emission	Humid.	40 %RH
		Tested by	K.Terada



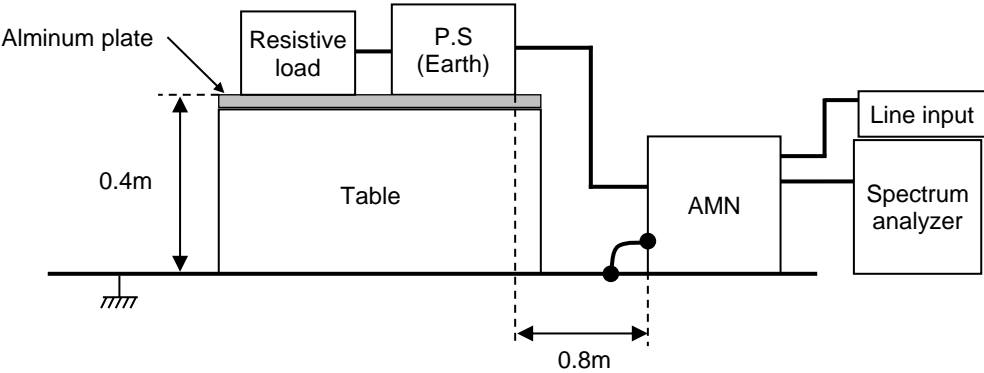
Frequency	Line	Level		Limit		Margin		Pass/Fail	Remark
MHz		dB(μV)		dB(μV)		dB			
		QP	AV	QP	AV	QP	AV		
0.15	N	49.3	48.2	79	66	29.7	17.8	Pass	
0.3	N	55.8	55.6	79	66	23.2	10.4	Pass	
24.919	N	41.4	39.1	73	60	31.6	20.9	Pass	
0.15	L1	49.9	49	79	66	29.1	17	Pass	
0.3	L1	55.9	55.7	79	66	23.1	10.3	Pass	
29.417	L1	44.5	41.6	73	60	28.5	18.4	Pass	



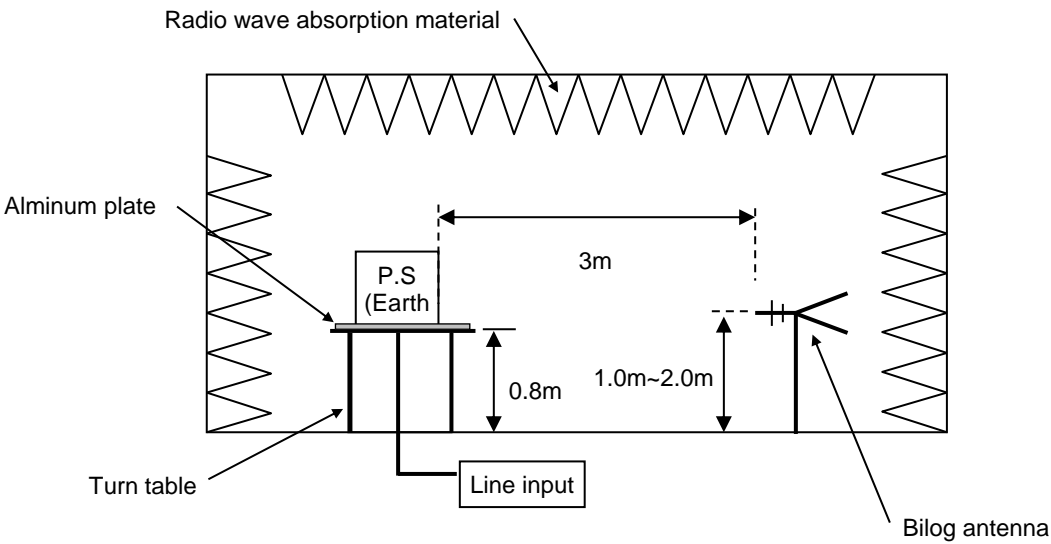
Frequency MHz	Polarization	Stability	Level	Limit	Margin	Pass/Fail	Height cm	Angle deg	Remark
			dB(μV/m) QP	dB(μV/m) QP	dB QP				
160.536	H	Stable	42.1	50	7.9	Pass	199.7	0.1	
223.674	H	Stable	42.8	50	7.2	Pass	105.9	267.1	
50.117	V	Stable	40.8	50	9.2	Pass	100	29.7	
229.36	V	Stable	41.3	50	8.7	Pass	100.2	244	

DATA SHEET		Date	15-May-25
Model	Circuit used for measurement	Temp.	25 degreeC
Test	EMI Line conduction & Radiated emission	Humid.	40 %RH
		Tested by	K.Terada

1. Line conduction



2. Radiated emission



Conditions

Test : EMI
Model Name: DCS1400B28

○Photographs of Test Set-Up

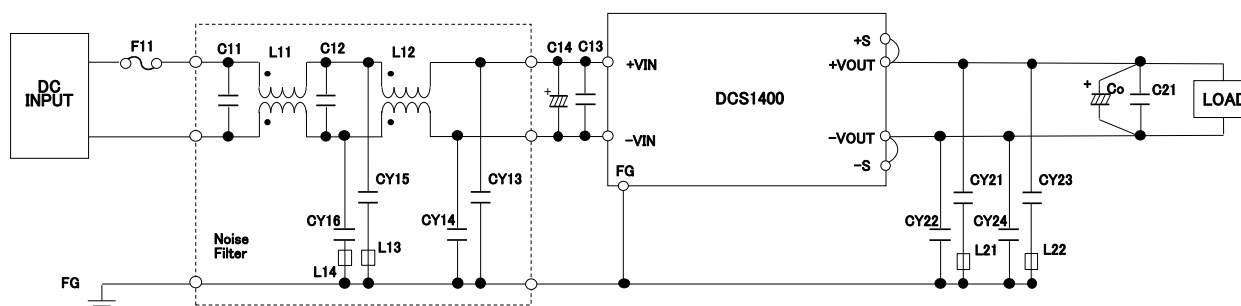
LINE CONDUCTION



RADIATED EMISSION



○Testing circuitry



F11	: 0505016
L11,L12	: SCF25XV-150-1R6A010JH
L13,L14	: Ferrite Bead (K5B T 4x2x2)
C11,C13	: 1.0uF 450V Film Calacitor
C12	: 2.2uF 450V Film Calacitor
C14	: 82uF 450V Electrolytic Capacitor
CY13,CY14	: 2200pF 400V
CY15,CY16	: 1500pF 400V
L21,L22	: Ferrite Bead (K5B T 4x2x2) (For DCS1400B65 only)
C21	: 1.0uF Ceramic Capacitor
CY21,CY22,CY23,CY24	: 0.01uF 300V (For DCS1400B65 only)
Co	: DCS1400B12 2200uF 16V Electrolytic Capacitor
	DCS1400B24 2200uF 35V Electrolytic Capacitor
	DCS1400B28 1000uF 50V Electrolytic Capacitor
	DCS1400B36 1000uF 50V Electrolytic Capacitor
	DCS1400B48 680uF 63V Electrolytic Capacitor
	DCS1400B65 330uF 100V Electrolytic Capacitor

Fig.1 Testing circuitry