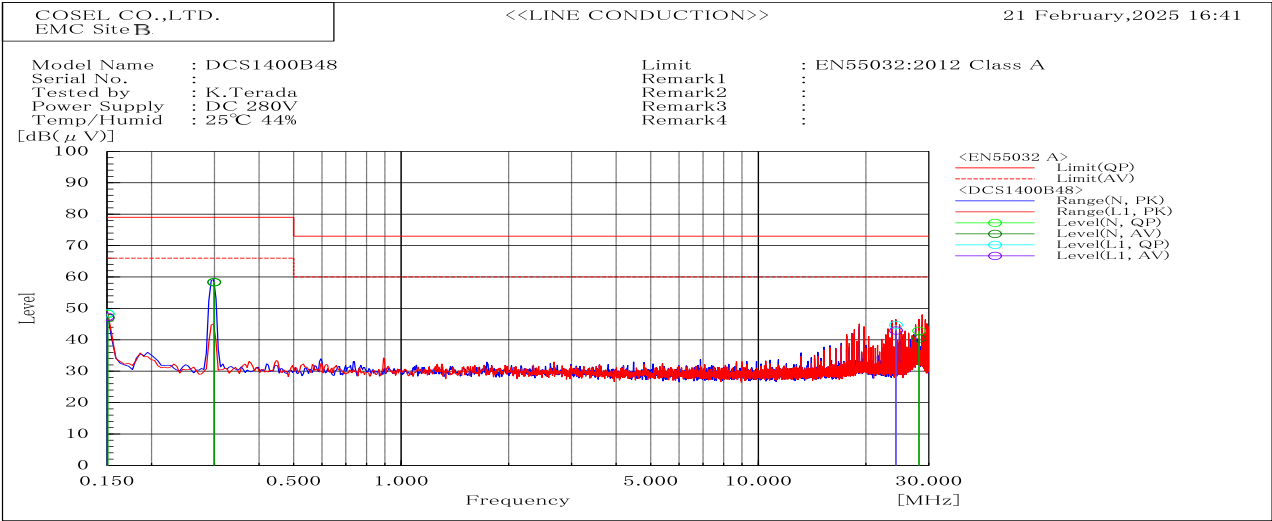
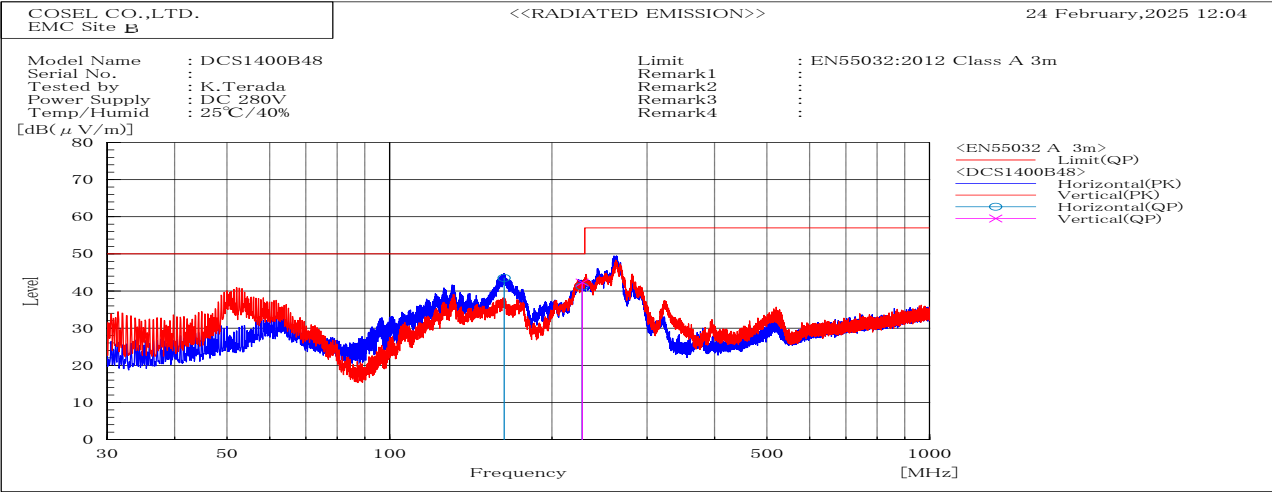


DATA SHEET		Date	15-May-25
Model	DCS1400B48	Temp.	25 degreeC
Test	EMI Line conduction & Radiated emission	Humid.	40 %RH
		Tested by	K.Terada



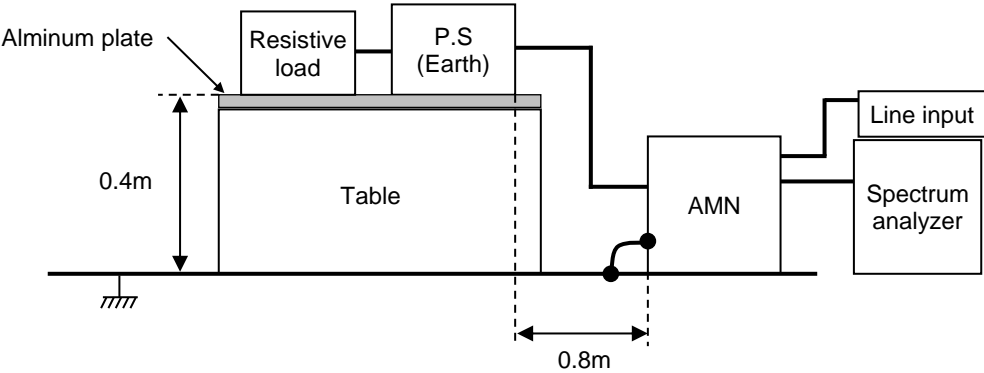
Frequency	Line	Level		Limit		Margin		Pass/Fail	Remark
MHz		dB(μV)		dB(μV)		dB			
		QP	AV	QP	AV	QP	AV		
0.151	N	48.2	47	79	66	30.8	19	Pass	
0.3	N	58.5	58.3	79	66	20.5	7.7	Pass	
28.17	N	42.8	40.4	73	60	30.2	19.6	Pass	
0.15	L1	48.5	47.4	79	66	30.5	18.6	Pass	
24.28	L1	44.7	42.9	73	60	28.3	17.1	Pass	



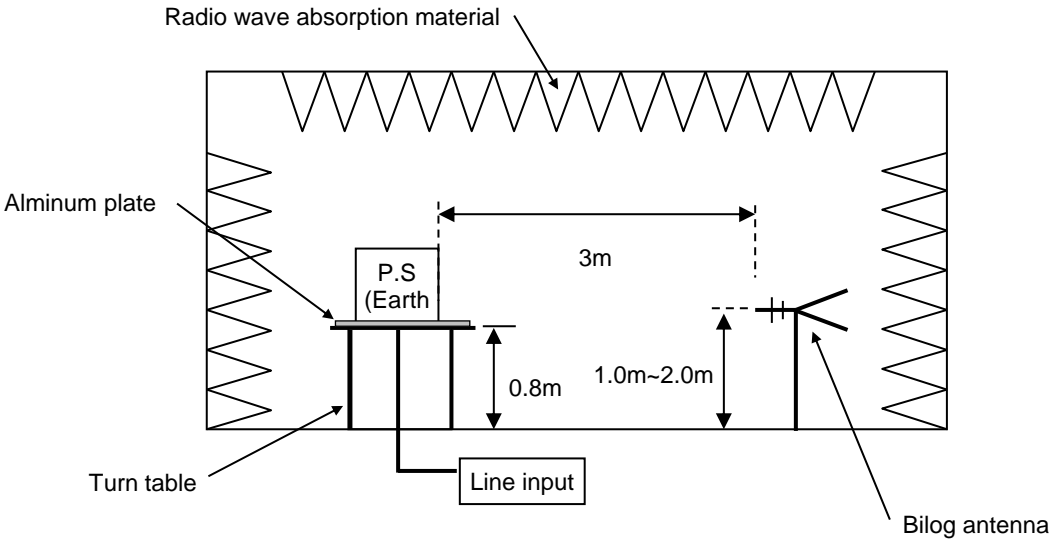
Frequency MHz	Polarization	Stability	Level	Limit	Margin	Pass/Fail	Height cm	Angle deg	Remark
			dB(uV/m) QP	dB(uV/m) QP	dB QP				
163.062	H	Stable	43.5	50	6.5	Pass	181.8	325.4	
227.238	H	Stable	41.2	50	8.8	Pass	139	228.7	
227.49	V	Stable	42.3	50	7.7	Pass	100.2	241.5	

DATA SHEET		Date	15-May-25
Model	Circuit used for measurement	Temp.	25 degreeC
Test	EMI Line conduction & Radiated emission	Humid.	40 %RH
		Tested by	K.Terada

1. Line conduction



2. Radiated emission



Conditions

Test : EMI  
 Model Name: DCS1400B48

Photographs of Test Set-Up

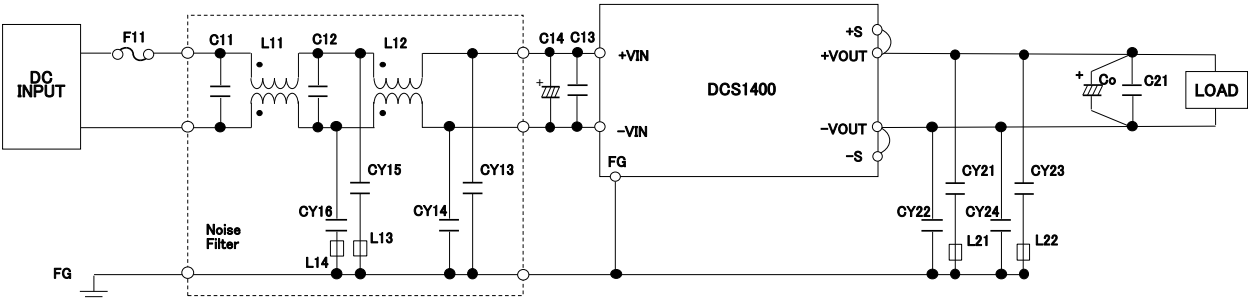
LINE CONDUCTION



RADIATED EMISSION



Testing circuitry



- |                     |  |
|---------------------|--|
| F11                 | : 0505016  |
| L11,L12             | : SCF25XV-150-1R6A010JH                            |
| L13,L14             | : Ferrite Bead (K5B T 4x2x2)                       |
| C11,C13             | : 1.0uF 450V Film Calacitor                        |
| C12                 | : 2.2uF 450V Film Calacitor                        |
| C14                 | : 82uF 450V Electrolytic Capacitor                 |
| CY13,CY14           | : 2200pF 400V                                      |
| CY15,CY16           | : 1500pF 400V                                      |
| L21,L22             | : Ferrite Bead (K5B T 4x2x2) (For DCS1400B65 only) |
| C21                 | : 1.0uF Ceramic Capacitor                          |
| CY21,CY22,CY23,CY24 | : 0.01uF 300V (For DCS1400B65 only)                |
| Co                  | : DCS1400B12 2200uF 16V Electrolytic Capacitor     |
|                     | DCS1400B24 2200uF 35V Electrolytic Capacitor       |
|                     | DCS1400B28 1000uF 50V Electrolytic Capacitor       |
|                     | DCS1400B36 1000uF 50V Electrolytic Capacitor       |
|                     | DCS1400B48 680uF 63V Electrolytic Capacitor        |
|                     | DCS1400B65 330uF 100V Electrolytic Capacitor       |

Fig.1 Testing circuitry