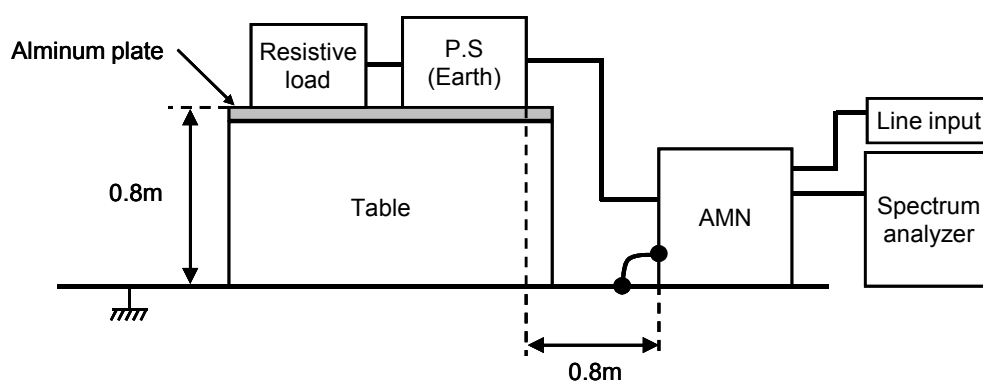


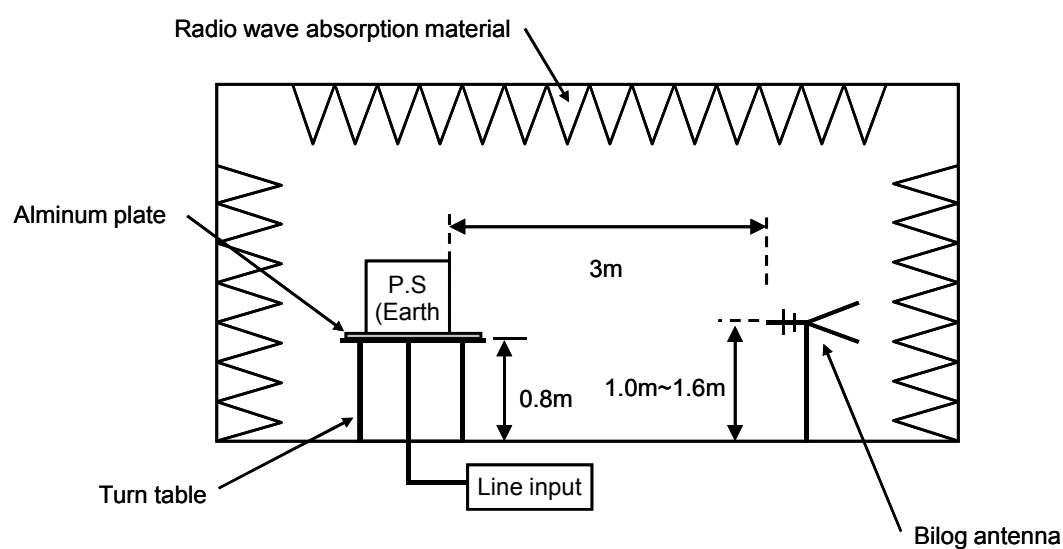
DATA SHEET							Date	17-Apr-09		
Model	DHS100B05						Temp.	25 degreeC		
Test	EMI Line conduction & Radiated emission						Humid.	45 %RH		
							Tested by	S.SAWADA		
LINE CONDUCTION										
Model Name : DHS100B05			Temp. : 25							
Model No. :			Humi. : 45							
Serial No. :			Date : 2009/4/17 16:35							
Points : 4			Test Equip. : R3132,ESPC							
Detector : PEAK/QP/Ave.			Load Line : 100mm							
Line Mode : VA/VB			Comment : S.SAWADA							
Power Supply : AC230V 50Hz										
Limit1: [EN 55022] Class A(QP)										
Limit2: [EN 55022] Class A(Ave.)										

DATA SHEET		Date	17-Apr-09
Model	Circuit used for measurement	Temp.	25 degreeC
Test	EMI Line conduction & Radiated emission	Humid.	45 %RH
		Tested by	S.SAWADA

1. Line conduction



2. Radiated emission

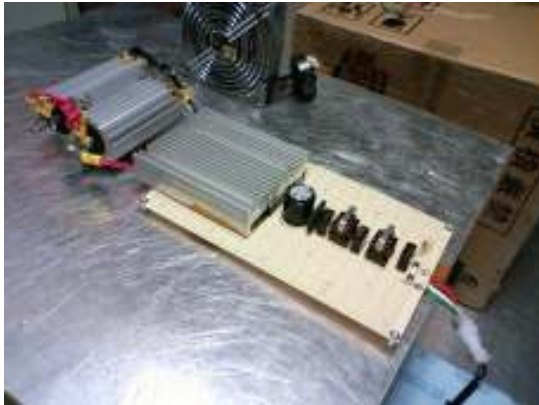


Test: EMI

Model Name:DHS50B/DHS100B Series

○ Photographs of Test Set-Up

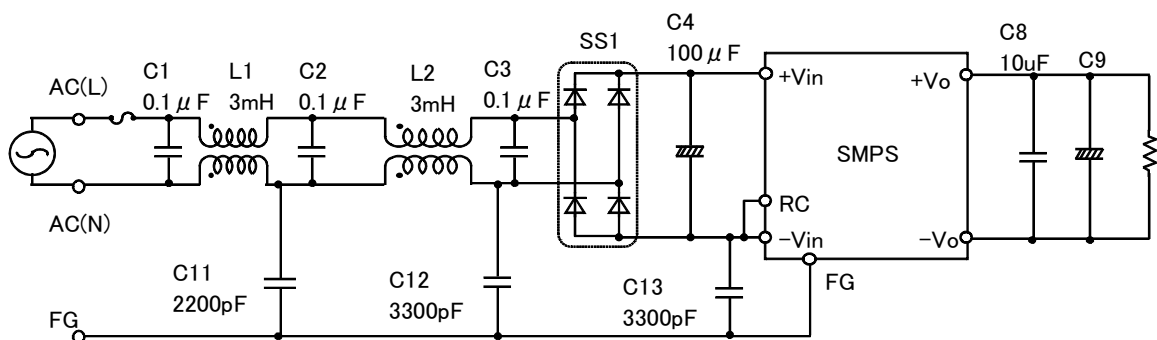
LINE CONDUCTION



RADIATED EMISSION



○ Test circuit



L1,L2	:	SC-02-300(NEC TOKIN)
SS1	:	D3SBA60(SINDENGEN)
C9	:	DHS50B03/DHS100B03 2200 μ F
	:	DHS50B05/DHS100B05 2200 μ F
	:	DHS50B12/DHS100B12 470 μ F
	:	DHS50B15/DHS100B15 470 μ F
	:	DHS50B24/DHS100B24 220 μ F
	:	DHS50B28/DHS100B28 220 μ F