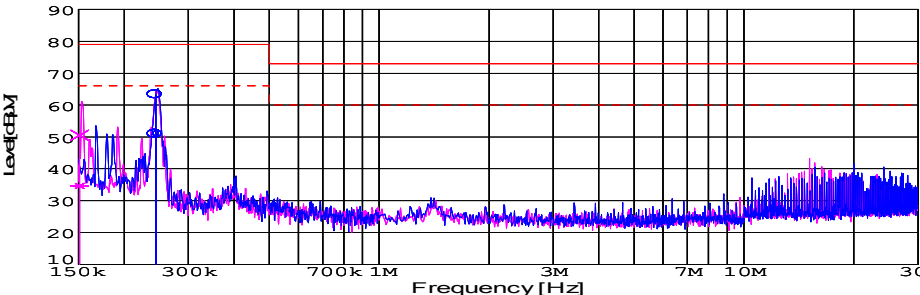
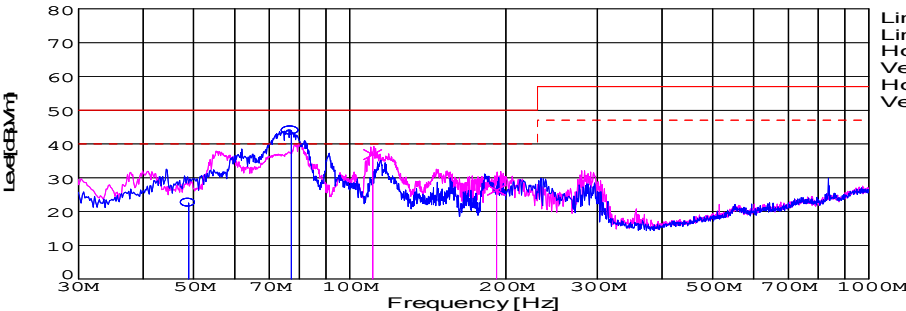
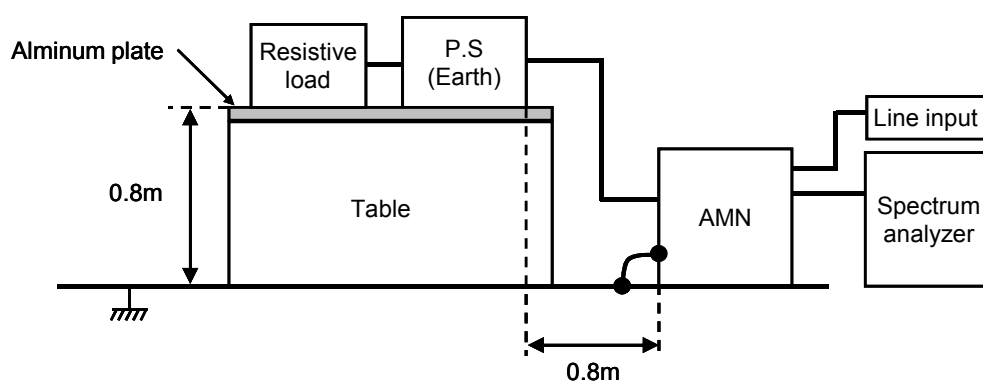


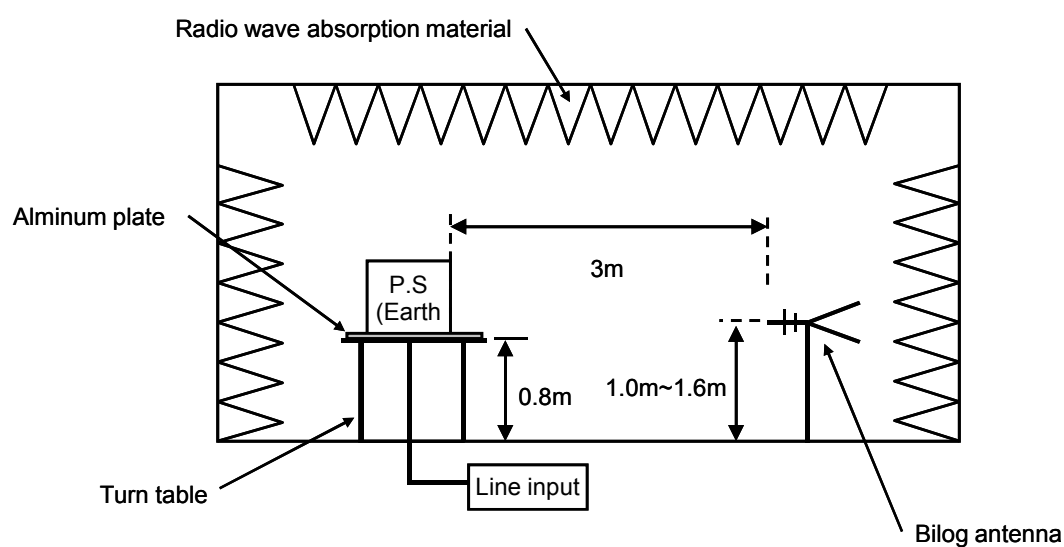
DATA SHEET							Date	16-Apr-09		
Model	DHS100B12						Temp.	25 degreeC		
Test	EMI Line conduction & Radiated emission						Humid.	45 %RH		
							Tested by	S.SAWADA		
LINE CONDUCTION										
Model Name : DHS100B12			Temp. : 25			:				
Model No. :			Humi. : 45			:				
Serial No. :			Date : 2009/4/16 14:02			:				
Points : 2			Test Equip. : R3132,ESPC			:				
Detector : PEAK/QP/Ave.			Load Line : 100mm			:				
Line Mode : VA/VB			Comment : S.SAWADA			:				
Power Supply : AC 230V 50Hz										
Limit1: [EN 55022] Class A(QP)										
Limit2: [EN 55022] Class A(Ave.)										
							Limit1(QP) ——— Limit2(Ave.) - - - VA(PEAK) ——— VB(PEAK) ——— VA(QP) ○ VA(Ave.) ● VB(QP) × VB(Ave.) *			
							AC 230V 50Hz 12V 8.4A			
Frequency [MHz]	Meter Reading (Ave.) [dBuV]	Meter Reading (QP) [dBuV]	Factor [dB]	Level(Ave.) [dBuV]	Level(QP) [dBuV]	Line	Limit(Ave.) [dBuV]	Limit(QP) [dBuV]	Margin(Ave.) [dB]	Margin(QP) [dB]
0.244	41.1	53.4	9.8	50.9	63.2	VA	66	79	15.1	15.8
0.1509	24.8	40.7	9.8	34.6	50.5	VB	66	79	31.4	28.5
RADIATED EMISSION										
Model Name : DHS100B12			Temp. : 25			:				
Model No. :			Humi. : 45			:				
Serial No. :			Date : 2009/4/16 11:26			:				
Points : 4			Test Equip. : R3132,ESPC			:				
Detector : PEAK/QP			Load Line : 100mm			:				
Polarization : Hori. & Vert.			Comment : S.SAWADA			:				
Power Supply : AC 230V 50Hz										
Limit: [EN 55022] Class A<3m>										
							Limit(QP) ——— Limit(QP)(-10dB) - - - Horizontal(PEAK) ——— Vertical(PEAK) ——— Horizontal(QP) ○ Vertical(QP) ×			
							AC 230V 50Hz 12V 8.4A			
Frequency [MHz]	MeterReading (QP)[dBuV/m]	Ant. Type	Antenna Factor[dB/m]	Cable & Preamp[dB]	Level(QP) [dBuV/m]	Angle [°]	Height[cm]	Polar.	Limit [dBuV/m]	Margin [dB]
48.912	46.3	BL	8.3	-32.1	22.5	59	155	Hori.	50	27.5
77.162	69.2	BL	6.7	-31.9	44	254	147	Hori.	50	6
110.725	57.8	BL	10.7	-31.7	36.8	6	116	Vert.	50	13.2
191.74	49.3	BL	8.3	-31.3	26.3	181	106	Vert.	50	23.7

DATA SHEET		Date	16-Apr-09
Model	Circuit used for measurement	Temp.	25 degreeC
Test	EMI Line conduction & Radiated emission	Humid.	45 %RH
		Tested by	S.SAWADA

## 1. Line conduction



## 2. Radiated emission



Test: EMI

Model Name:DHS50B/DHS100B Series

○ Photographs of Test Set-Up

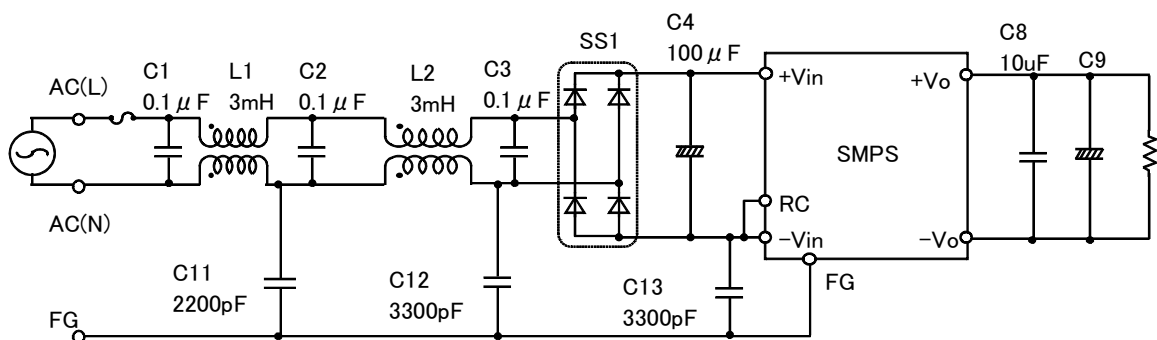
LINE CONDUCTION



RADIATED EMISSION



○ Test circuit



L1,L2	:	SC-02-300(NEC TOKIN)
SS1	:	D3SBA60(SINDENGEN)
C9	:	DHS50B03/DHS100B03 2200 μ F
	:	DHS50B05/DHS100B05 2200 μ F
	:	DHS50B12/DHS100B12 470 μ F
	:	DHS50B15/DHS100B15 470 μ F
	:	DHS50B24/DHS100B24 220 μ F
	:	DHS50B28/DHS100B28 220 μ F