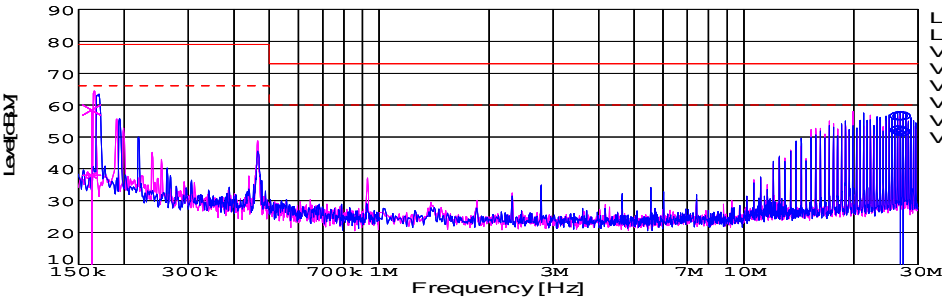
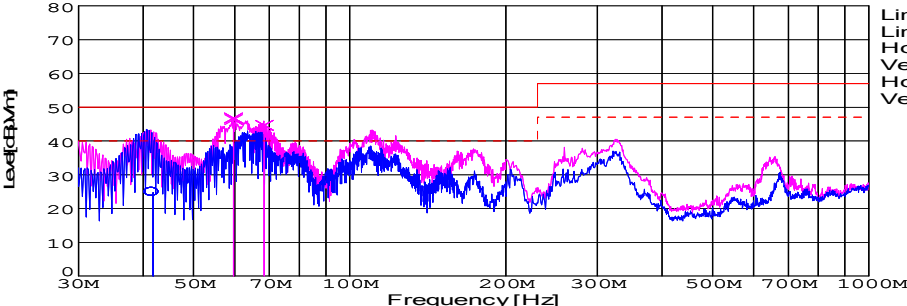
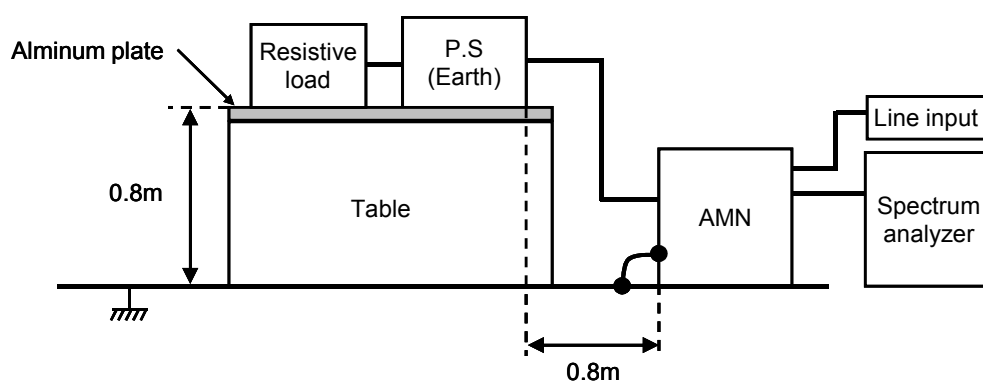


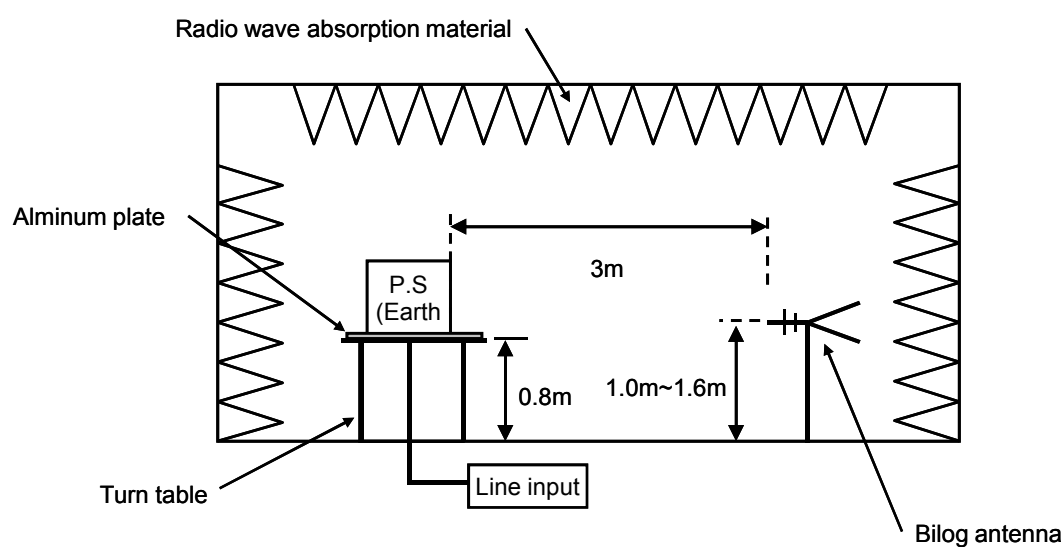
DATA SHEET							Date	15-Apr-09		
Model	DHS100B24						Temp.	25 degreeC		
Test	EMI Line conduction & Radiated emission						Humid.	45 %RH		
							Tested by	S.SAWADA		
LINE CONDUCTION										
Model Name : DHS100B24			Temp. : 25							
Model No. :			Humi. : 45							
Serial No. :			Date : 2009/4/15 10:12							
Points : 3			Test Equip. : R3132,ESPC							
Detector : PEAK/QP/Ave.			Load Line : 100mm							
Line Mode : VA/VB			Comment : S.SAWADA							
Power Supply : AC 230V 50Hz										
Limit1: [EN 55022] Class A(QP)										
Limit2: [EN 55022] Class A(Ave.)										
							Limit1(QP) Limit2(Ave.) VA(PEAK) VB(PEAK) VA(QP) VA(Ave.) VB(QP) VB(Ave.)			
							AC 230V 50Hz 24V 4.2A			
Frequency [MHz]	Meter Reading (Ave.) [dBuV]	Meter Reading (QP) [dBuV]	Factor [dB]	Level(Ave.) [dBuV]	Level(QP) [dBuV]	Line	Limit(Ave.) [dBuV]	Limit(QP) [dBuV]	Margin(Ave.) [dB]	Margin(QP) [dB]
26.8732	41.4	46	10.4	51.8	56.4	VA	60	73	8.2	16.6
27.3332	40.9	45.8	10.4	51.3	56.2	VA	60	73	8.7	16.8
RADIATED EMISSION										
Model Name : DHS100B24			Temp. : 25							
Model No. :			Humi. : 45							
Serial No. :			Date : 2009/4/15 9:23							
Points : 4			Test Equip. : R3132,ESPC							
Detector : PEAK/QP			Load Line : 100mm							
Polarization : Hori. & Vert.			Comment : S.SAWADA							
Power Supply : AC 230V 50Hz										
Limit: [EN 55022] Class A<3m>										
							Limit(QP) Limit(QP)(-10dB) Horizontal(PEAK) Vertical(PEAK) Horizontal(QP) Vertical(QP)			
							AC 230V 50Hz 24V 4.2A			
Frequency [MHz]	MeterReading (QP) [dBuV]	Ant. Type	Antenna Factor [dB/m]	Cable & Preamp [dB]	Level(QP) [dBuV/m]	Angle [°]	Height [cm]	Polar.	Limit [dBuV/m]	Margin [dB]
59.758	73.7	BL	4.7	-32	46.4	19	105	Vert.	50	3.6
59.669	74	BL	4.8	-32	46.8	24	120	Vert.	50	3.2
68.436	71.4	BL	5.2	-32	44.6	119	108	Vert.	50	5.4

DATA SHEET		Date	15-Apr-09
Model	Circuit used for measurement	Temp.	25 degreeC
Test	EMI Line conduction & Radiated emission	Humid.	45 %RH
		Tested by	S.SAWADA

1. Line conduction



2. Radiated emission



Test: EMI

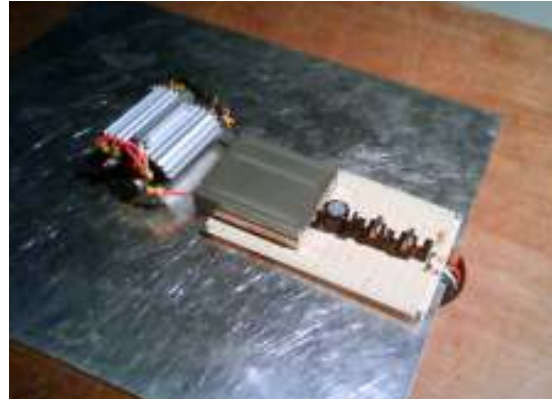
Model Name:DHS50B/DHS100B Series

○ Photographs of Test Set-Up

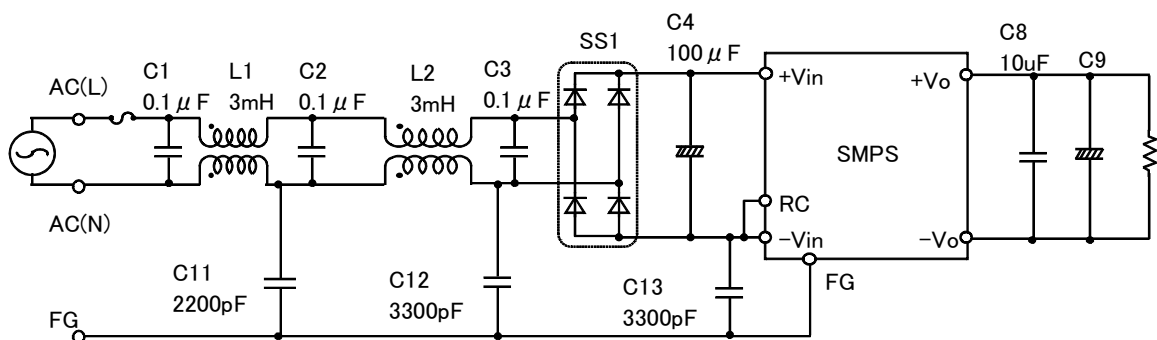
LINE CONDUCTION



RADIATED EMISSION



○ Test circuit



L1,L2 : SC-02-300(NEC TOKIN)
 SS1 : D3SBA60(SINDENGEN)
 C9 : DHS50B03/DHS100B03 2200 μF
 DHS50B05/DHS100B05 2200 μF
 DHS50B12/DHS100B12 470 μF
 DHS50B15/DHS100B15 470 μF
 DHS50B24/DHS100B24 220 μF
 DHS50B28/DHS100B28 220 μF