

DATA SHEET							Date	19-Oct-09
Model	DHS250B05						Temp.	25 degreeC
Test	EMI Line conduction & Radiated emission						Humid.	45 %RH
							Tested by	D.TSUCHDA

**LINE CONDUCTION**  
Model Name : DHS250B05  
Model No. :  
Serial No. :  
Points : 3  
Detector : PEAK/QP/Ave.  
Line Mode : VA/VB  
Power Supply : 230V(1 Phase) 50Hz  
Limit1 : [EN 55011] Class A Gr. 1 (QP)  
Limit2 : [EN 55011] Class A Gr. 1 (Ave.)

Temp. : 25°C  
Humi. : 45%  
Date : 2009/10/19 14:15  
Test Equip. : R3132. ESPC  
Load Line : 100mm  
Comment : D. TSUCHDA

230V(1 Phase) 50Hz

Frequency [MHz]	Meter Reading (Ave.) [dBuV]	Meter Reading (QP) [dBuV]	Factor [dB]	Level(Ave.) [dBuV]	Level(QP) [dBuV]	Line	Limit(Ave.) [dBuV]	Limit(QP) [dBuV]	Margin(Ave.) [dB]	Margin(QP) [dB]
0.1739	27.3	47.1	9.8	37.1	56.9	VA	66	79	28.9	22.1
28.3159	31.6	37	10.4	42	47.4	VA	60	73	18	25.6
0.1729	27.4	47.1	9.8	37.2	56.9	VB	66	79	28.8	22.1

**RADIATED EMISSION**  
Model Name : DHS250B05  
Model No. :  
Serial No. :  
Bands : 3  
Detector : PEAK  
Polarization : Hori. & Vert.  
Power Supply : AC 230V 50Hz  
Limit : [EN 55011] Class A Group 1<3m>

Temp. : 25°C  
Humi. : 45%  
Date : 2009/11/5 9:49  
Test Equip. : R3132  
Load Line : 100mm  
Comment : RYOU HOU

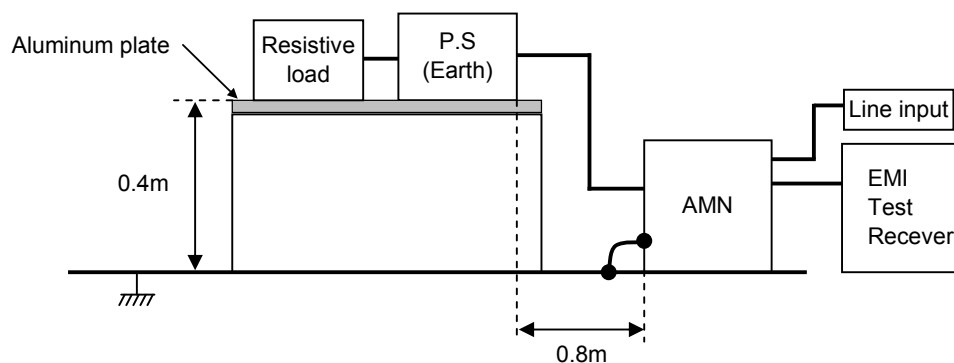
AC 230V 50Hz

Frequency [MHz]	MeterReading (QP) [dBuV]	Ant. Type	Antenna Factor [dB/m]	Cable & Preamp [dB]	Level(QP) [dBuV/m]	Angle [°]	Height [cm]	Polar.	Limit [dBuV/m]	Margin [dB]
30.125	53.9	BL	18.1	-32.2	39.8	157	103	Vert.	50	10.2
55.235	57.8	BL	5.6	-22.4	41	300	131	Vert.	50	9.0
107.909	56.3	BL	10.5	-26.9	39.9	303	119	Vert.	50	10.1

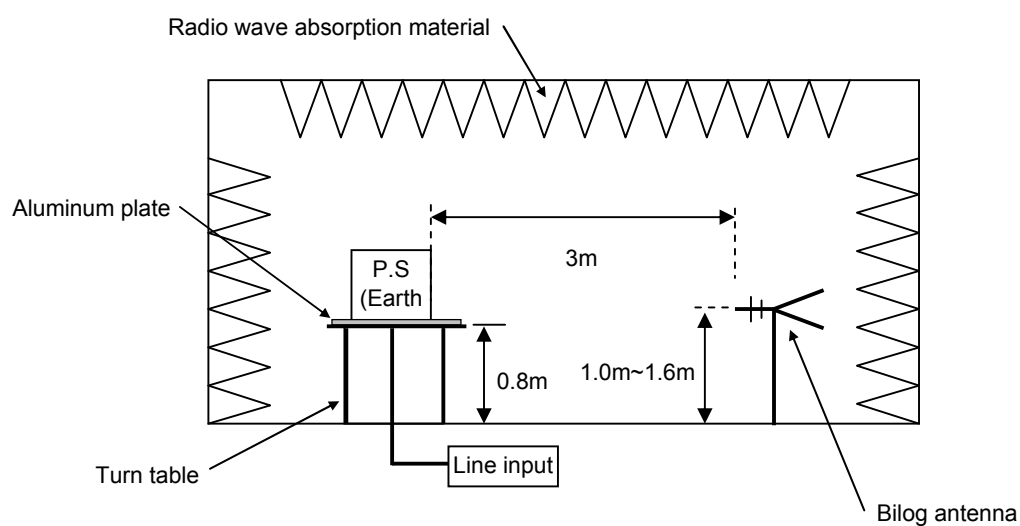
# DATA SHEET

Model	Circuit used for measurement
Test	EMI Line conduction & Radiated emission

## 1. Line conduction



## 2. Radiated emission

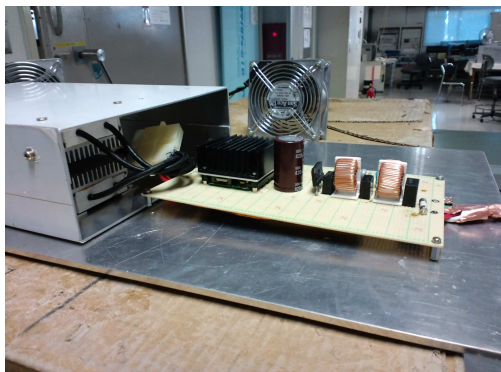


Test: EMI

Model Name:DHS250B Series

○ Photographs of Test Set-Up

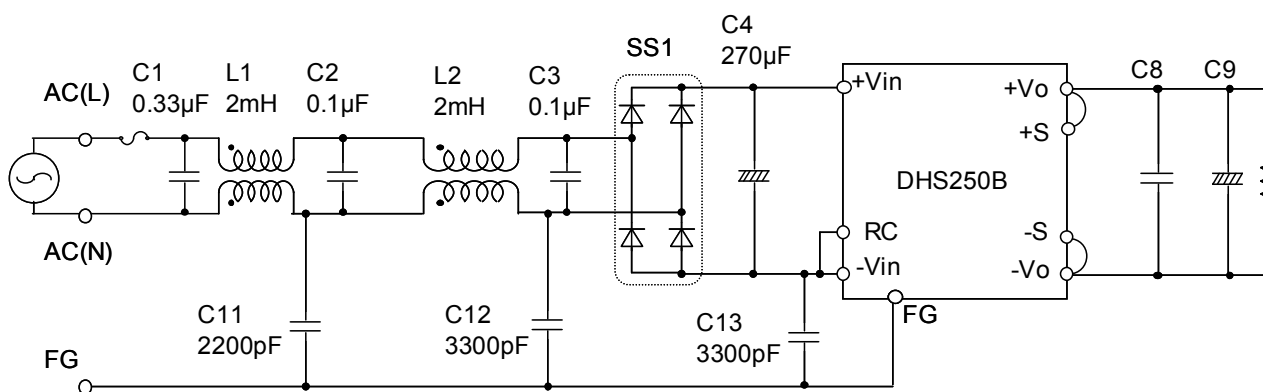
LINE CONDUCTION



RADIATED EMISSION



○ Test circuit



L1,L2 : SC-05-200(NEC TOKIN)

SS1 : D10XB60(SINDENGEN)

C8 : DHS250B03 10μF  
 DHS250B05 10μF  
 DHS250B07 10μF  
 DHS250B12 10μF  
 DHS250B15 10μF  
 DHS250B24 4.7μF  
 DHS250B28 4.7μF  
 DHS250B48 2.2μF

C9 : DHS250B03 2200μF  
 DHS250B05 2200μF  
 DHS250B07 2200μF  
 DHS250B12 1000μF  
 DHS250B15 1000μF  
 DHS250B24 470μF  
 DHS250B28 470μF  
 DHS250B48 330μF