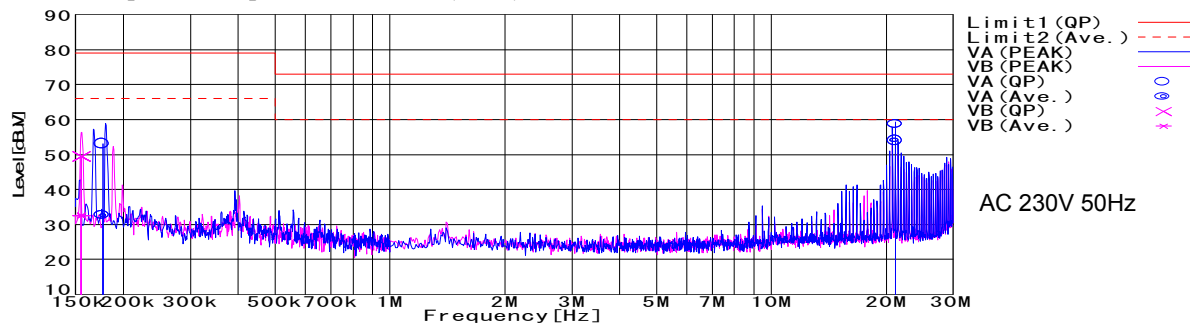


DATA SHEET		Date	06-Oct-09
Model	DHS250B24	Temp.	25 degreeC
Test	EMI Line conduction & Radiated emission	Humid.	45 %RH
		Tested by	D.TSUCHIDA

LINE CONDUCTION
 Model Name : DHS250B24
 Model No. :
 Serial No. :
 Points : 3
 Detector : PEAK/QP/Ave.
 Line Mode : VA/VB
 Power Supply : AC 230V 50Hz
 Limit1 : [EN 55011] Class A Gr. 1 (QP)
 Limit2 : [EN 55011] Class A Gr. 1 (Ave.)

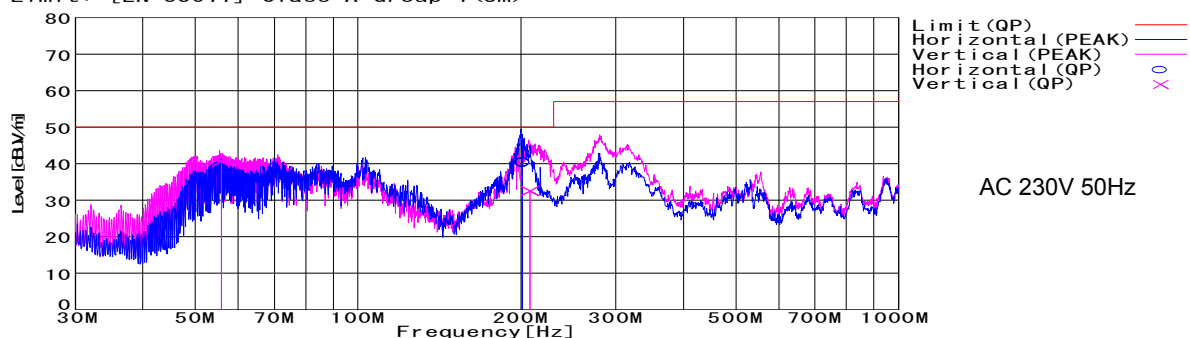
Temp. : 25°C
 Humi. : 45%
 Date : 2009/10/6 14:16
 Test Equip. : R3132. ESPC
 Load Line : 100mm
 Comment : RYOU HOU



Frequency [MHz]	Meter Reading (Ave.) [dBuV]	Meter Reading (QP) [dBuV]	Factor [dB]	Level(Ave.) [dBuV]	Level(QP) [dBuV]	Line	Limit(Ave.) [dBuV]	Limit(QP) [dBuV]	Margin(Ave.) [dB]	Margin(QP) [dB]
0.1772	22.8	43.3	9.8	32.6	53.1	VA	66	79	33.4	25.9
21.1246	43.7	48.4	10.3	54	58.7	VA	60	73	6	14.3
0.1554	22.7	39.7	9.8	32.5	49.5	VB	66	79	33.5	29.5

RADIATED EMISSION
 Model Name : DHS250B24
 Model No. :
 Serial No. :
 Points : 3
 Detector : PEAK/QP
 Polarization : Hori. & Vert.
 Power Supply : AC230V 50Hz
 Limit : [EN 55011] Class A Group 1 <3m>

Temp. : 25°C
 Humi. : 45%
 Date : 2009/10/8 9:50
 Test Equip. : R3132. ESPC
 Load Line : 100mm
 Comment : RYOU HOU

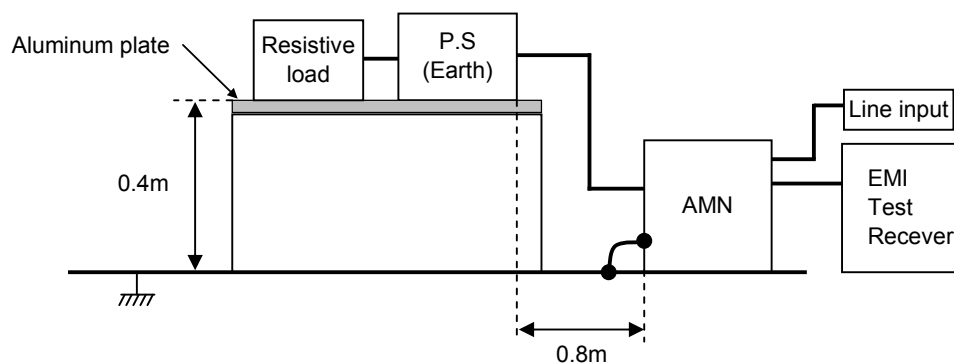


Frequency [MHz]	Meter Reading (QP) [dBuV/m]	Ant. Type	Antenna Factor [dB/m]	Cable & Preamp [dB]	Level(QP) [dBuV/m]	Angle [°]	Height [cm]	Polar.	Limit [dBuV/m]	Margin [dB]
201.2	62.3	BL	8.5	-30.4	40.4	44	107	Hori.	50	9.6
55.815	57.5	BL	5.5	-22.3	40.7	261	132	Vert.	50	9.3

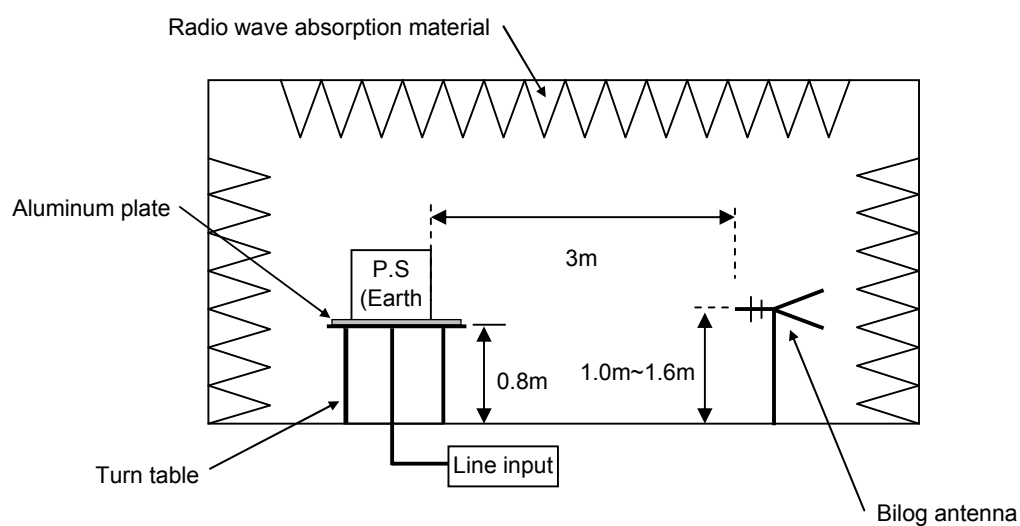
DATA SHEET

Model	Circuit used for measurement
Test	EMI Line conduction & Radiated emission

1. Line conduction



2. Radiated emission

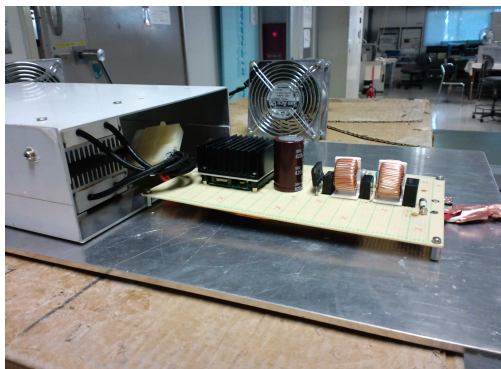


Test: EMI

Model Name:DHS250B Series

○ Photographs of Test Set-Up

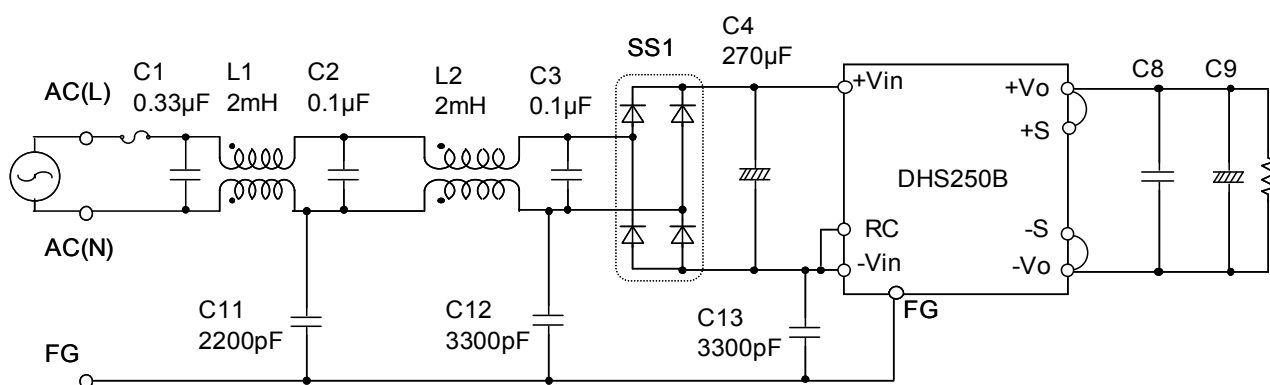
LINE CONDUCTION



RADIATED EMISSION



○ Test circuit



L1,L2 : SC-05-200(NEC TOKIN)

SS1 : D10XB60(SINDENGEN)

C8 : DHS250B03 10μF
 DHS250B05 10μF
 DHS250B07 10μF
 DHS250B12 10μF
 DHS250B15 10μF
 DHS250B24 4.7μF
 DHS250B28 4.7μF
 DHS250B48 2.2μF

C9 : DHS250B03 2200μF
 DHS250B05 2200μF
 DHS250B07 2200μF
 DHS250B12 1000μF
 DHS250B15 1000μF
 DHS250B24 470μF
 DHS250B28 470μF
 DHS250B48 330μF