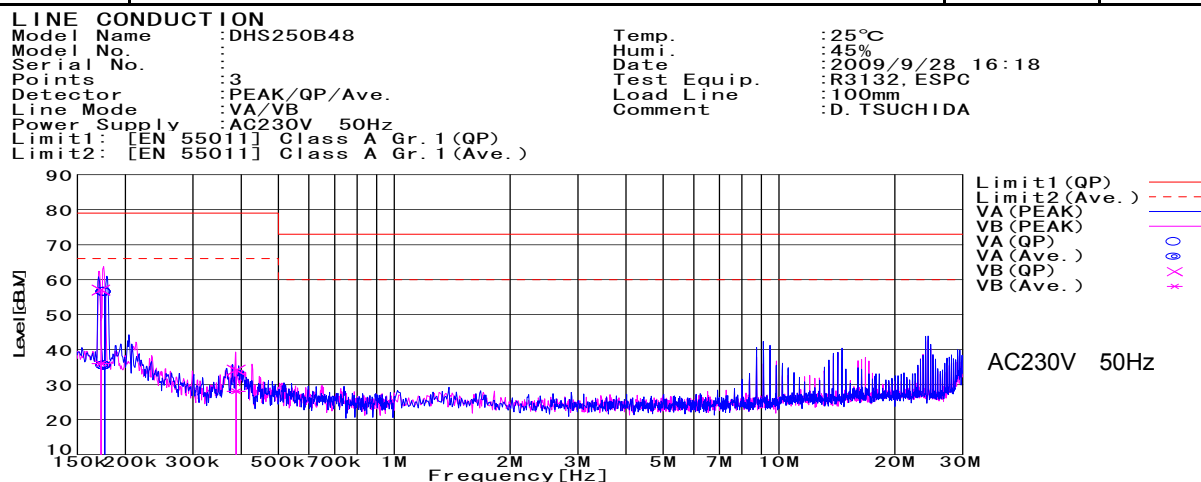
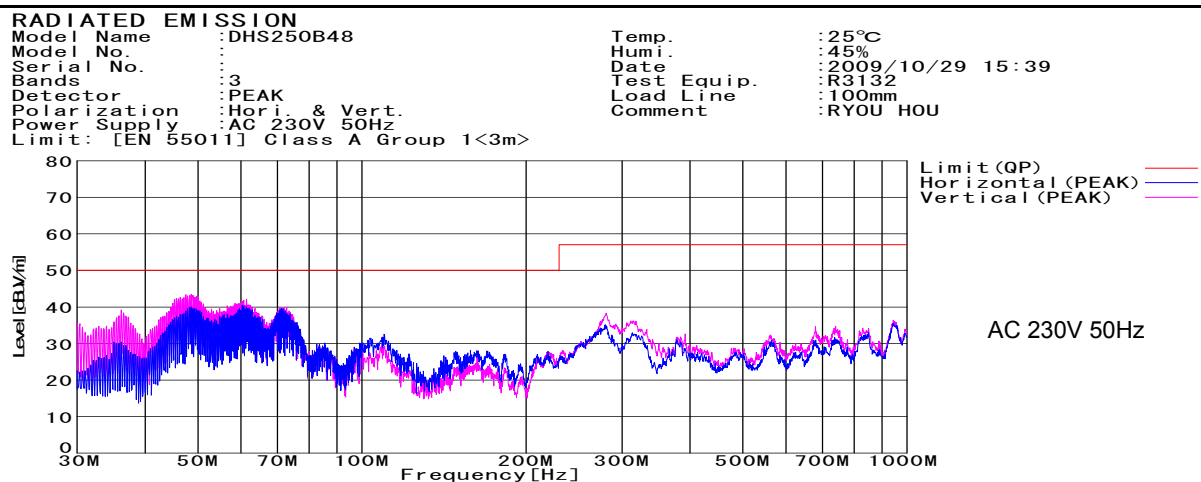


DATA SHEET		Date	28-Sep-09
Model	DHS250B48	Temp.	25 degreeC
Test	EMI Line conduction & Radiated emission	Humid.	45 %RH
		Tested by	D.TSUCHIDA



Frequency [MHz]	Meter Reading (Ave.) [dBuV]	Meter Reading (QP) [dBuV]	Factor [dB]	Level(Ave.) [dBuV]	Level(QP) [dBuV]	Line	Limit(Ave.) [dBuV]	Limit(QP) [dBuV]	Margin(Ave.) [dB]	Margin(QP) [dB]
0.1767	25.6	46.5	9.8	35.4	56.3	VA	66	79	30.6	22.7
0.1729	26.2	47.2	9.8	36	57	VB	66	79	30	22
0.3881	18.2	24.2	9.9	28.1	34.1	VB	66	79	37.9	44.9



Frequency [MHz]	Meter Reading (QP) [dBuV]	Ant. Type	Antenna Factor [dB/m]	Cable & Preamp [dB]	Level(QP) [dBuV/m]	Angle [°]	Height [cm]	Polar.	Limit [dBuV/m]	Margin [dB]
48.248	59.4	BL	8.6	-25.4	42.6	288	132	Vert.	50	7.4
61.361	57.8	BL	4.7	-21.1	41.4	90	124	Vert.	50	8.6

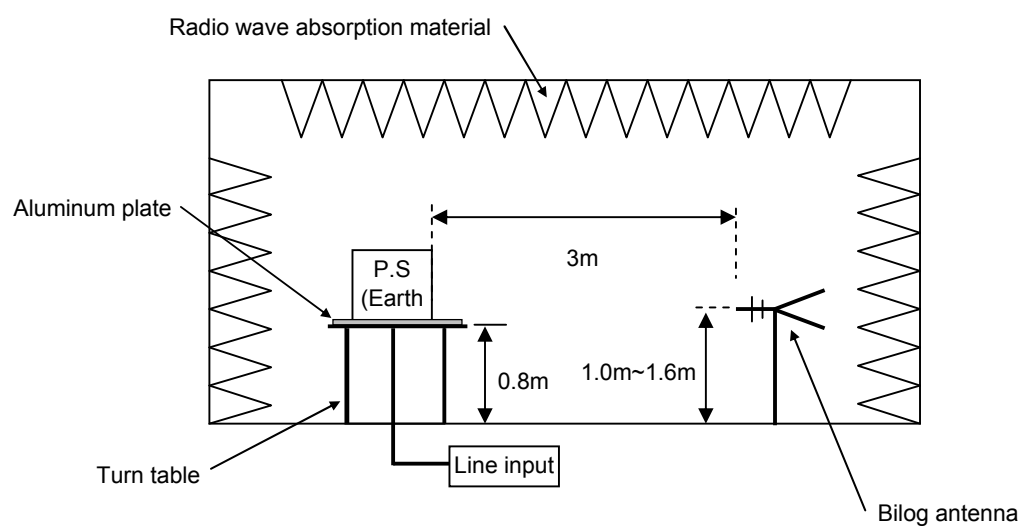
## DATA SHEET

Model	Circuit used for measurement
Test	EMI Line conduction & Radiated emission

### 1. Line conduction



### 2. Radiated emission

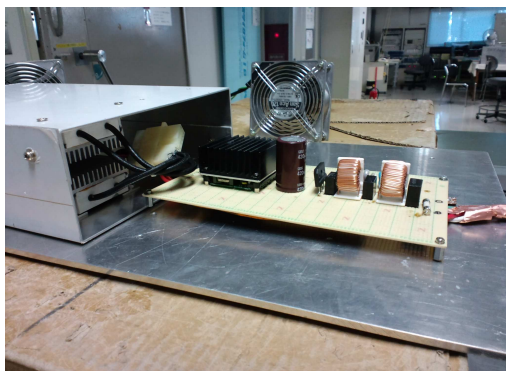


Test: EMI

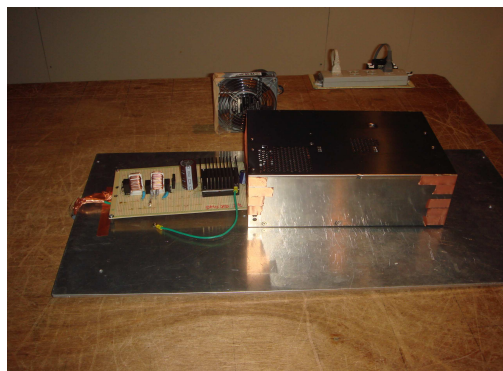
Model Name:DHS250B Series

○ Photographs of Test Set-Up

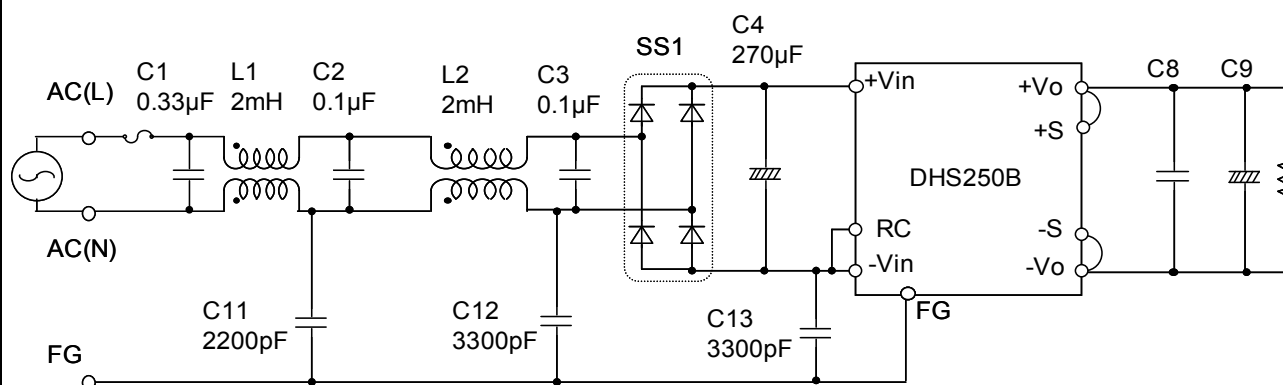
LINE CONDUCTION



RADIATED EMISSION



○ Test circuit



L1,L2 : SC-05-200(NEC TOKIN)

SS1 : D10XB60(SINDENGEN)

C8 : DHS250B03 10μF  
 DHS250B05 10μF  
 DHS250B07 10μF  
 DHS250B12 10μF  
 DHS250B15 10μF  
 DHS250B24 4.7μF  
 DHS250B28 4.7μF  
 DHS250B48 2.2μF

C9 : DHS250B03 2200μF  
 DHS250B05 2200μF  
 DHS250B07 2200μF  
 DHS250B12 1000μF  
 DHS250B15 1000μF  
 DHS250B24 470μF  
 DHS250B28 470μF  
 DHS250B48 330μF