

TEST DATA OF EAC-06-□□□/ESC-06-□□□**Noise Filter**

Nov. 30. 2010

Approved by : Toshio Watanabe
Toshio Watanabe Design Manager

Prepared by : Tadayuki Noda
Tadayuki Noda Design Engineer

COSEL CO.,LTD.

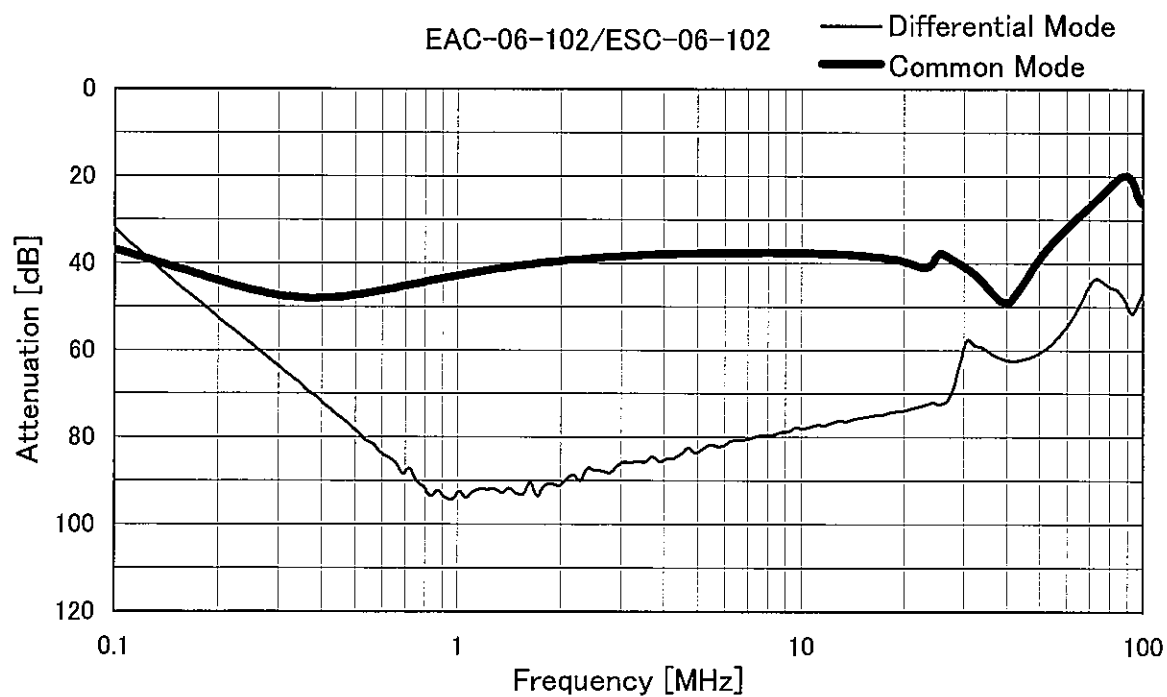
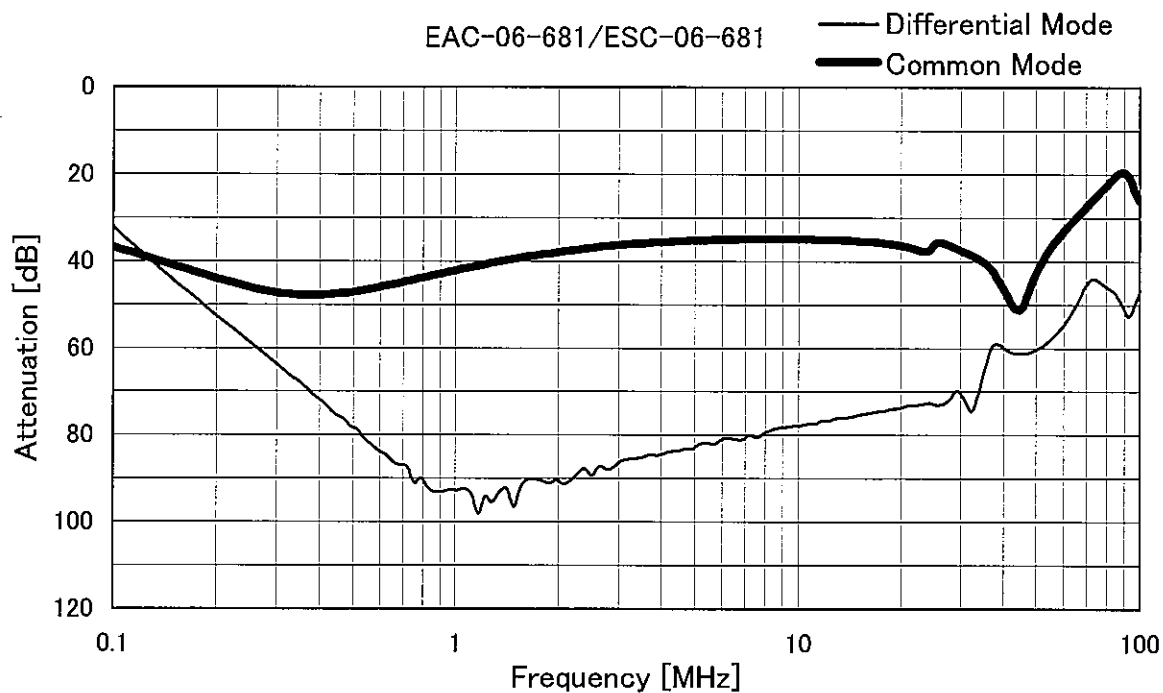
CONTENTS

1.Attenuation Characteristics	1
2.Pulse Attenuation Characteristics	4
3.Leakage Current	6
4.Figure of Testing Circuitry	7

(Final Page 8)

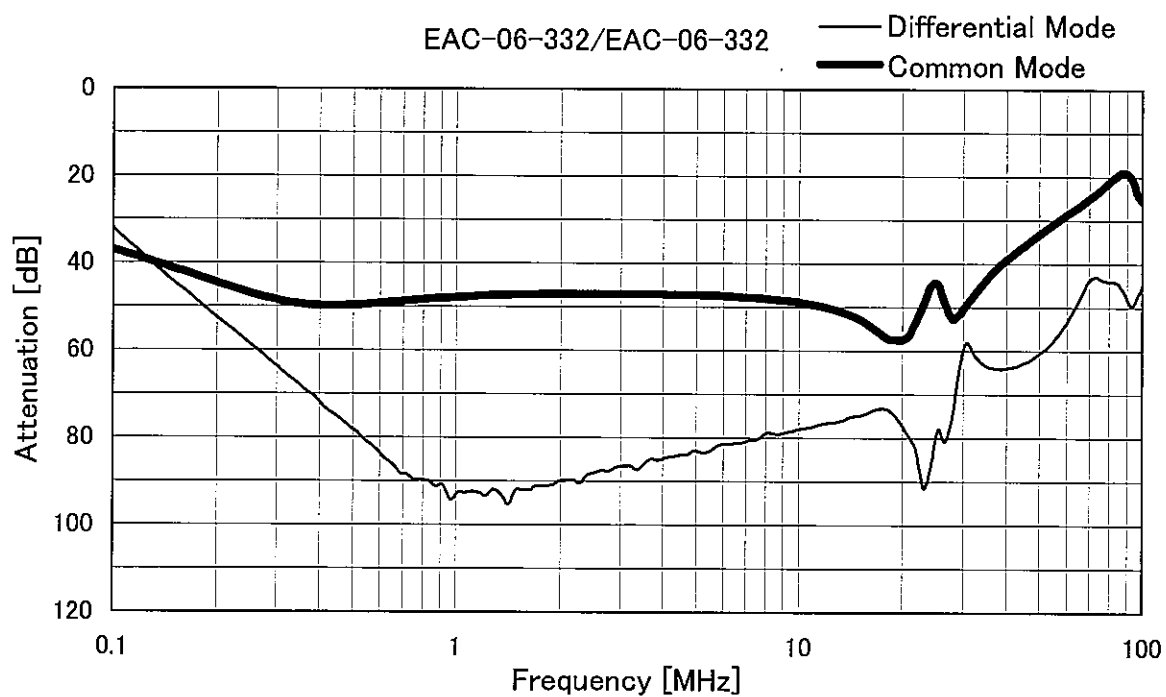
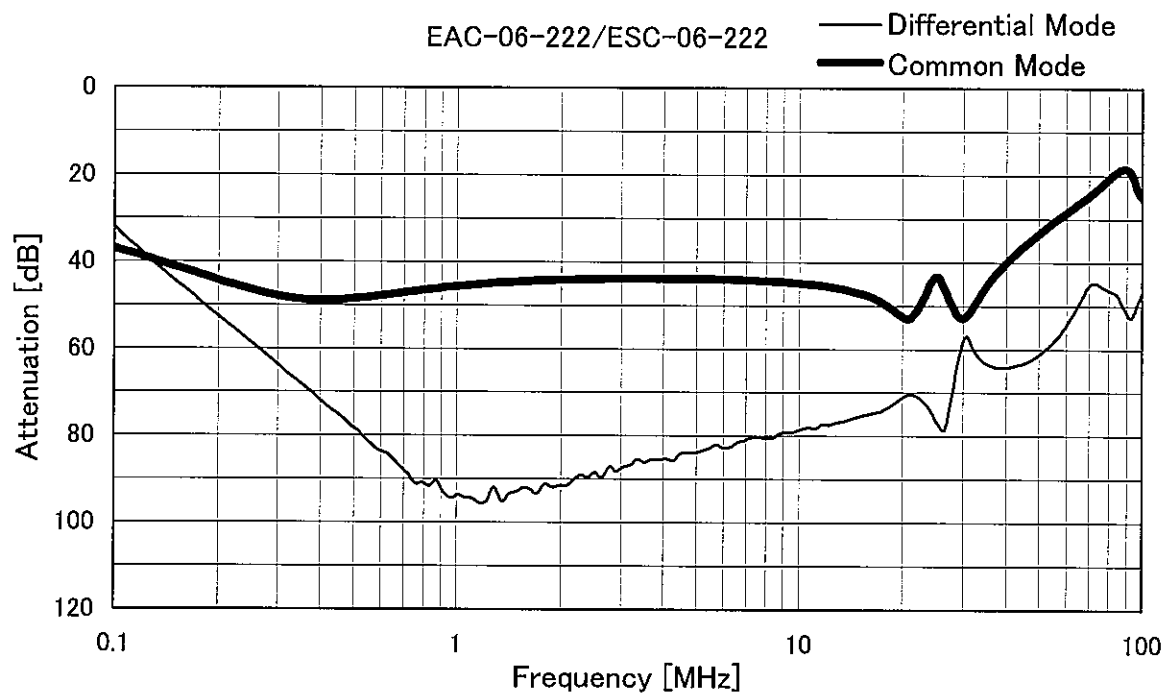
COSEL

Model	EAC-06-□□□/ESC-06-□□□	Temperature 25°C Testing Circuitry Figure A
Item	Attenuation Characteristics	
Object	_____	



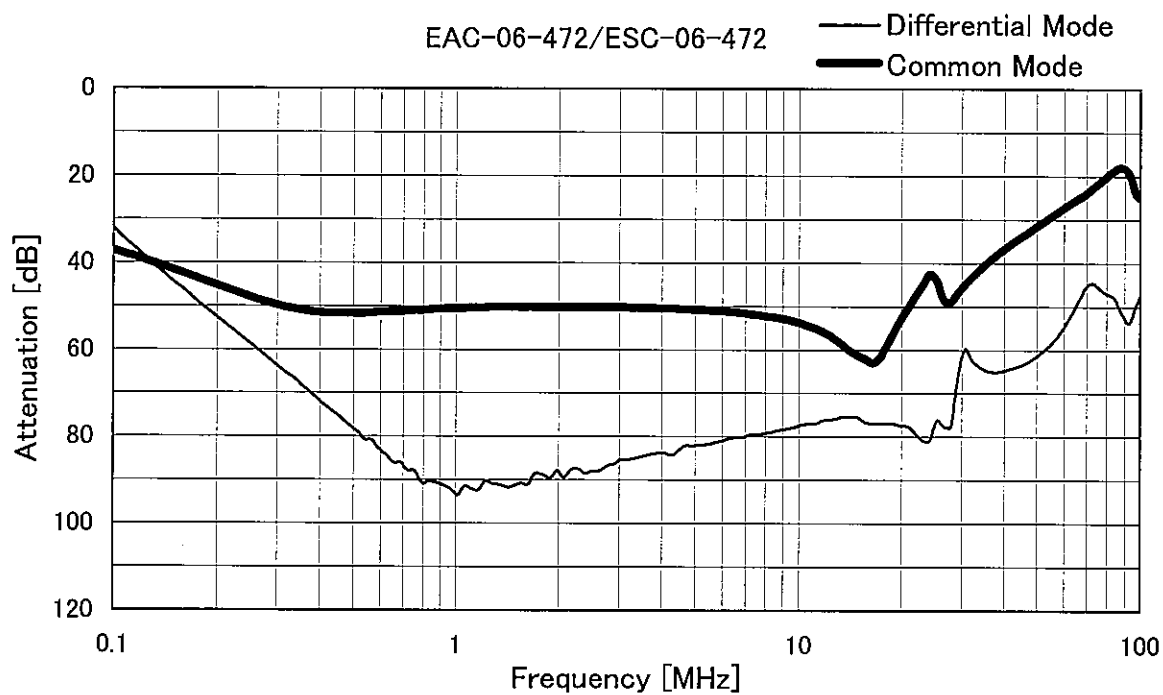
COSEL

Model	EAC-06-□□□/ESC-06-□□□	
Item	Attenuation Characteristics	Temperature 25°C Testing Circuitry Figure A
Object	_____	

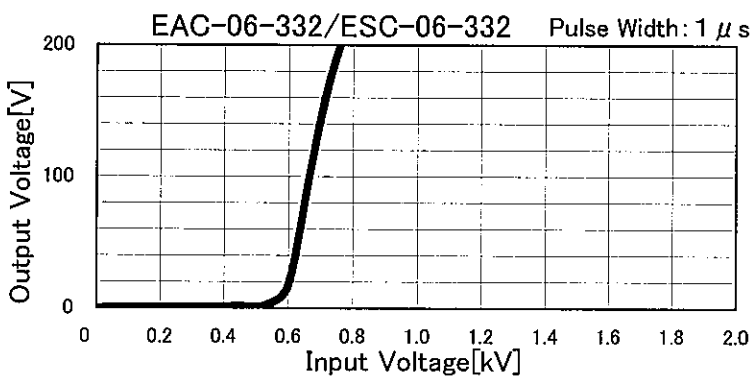
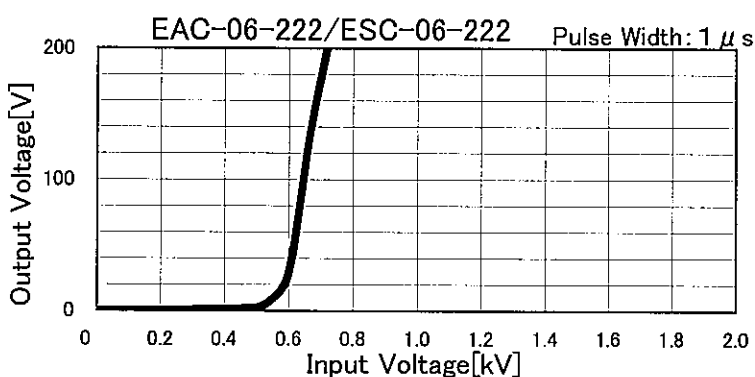
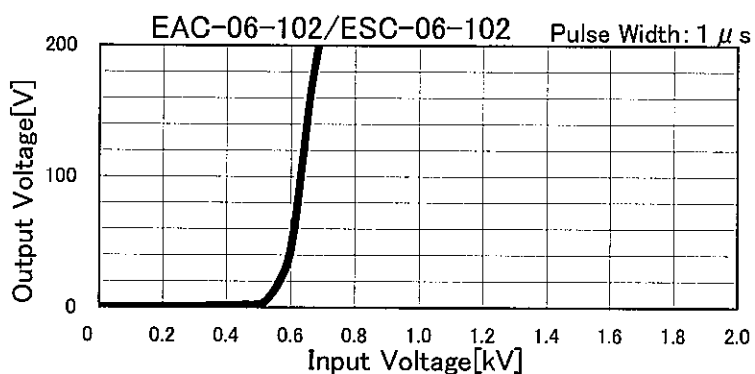
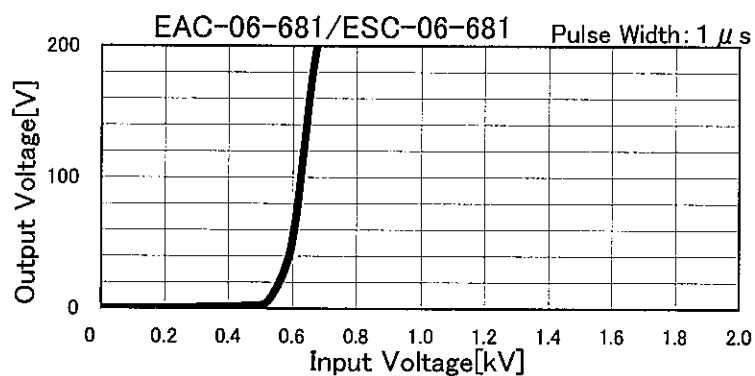


COSEL

		Temperature 25°C Testing Circuitry Figure A
Model	EAC-06-□□□/ESC-06-□□□	
Item	Attenuation Characteristics	
Object	_____	

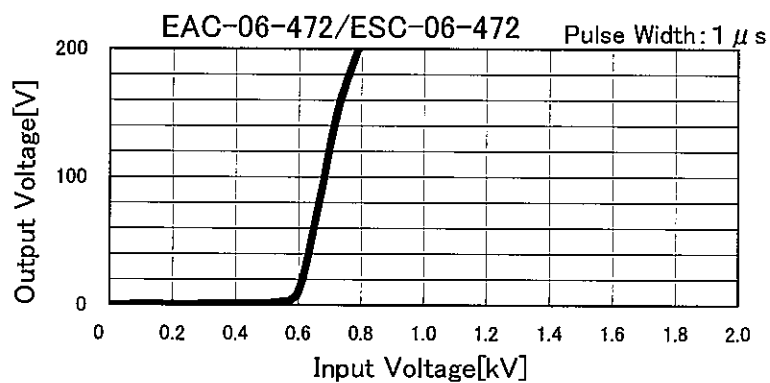


Model	EAC-06-□□□/ESC-06-□□□	Temperature	25°C
Item	Pulse Attenuation Characteristics	Testing Circuitry	Figure B
Object	_____		



COSEL

		Temperature 25°C Testing Circuitry Figure B
Model	EAC-06-□□□/ESC-06-□□□	
Item	Pulse Attenuation Characteristics	
Object	_____	





Model		EAC-06-□□□/ESC-06-□□□
Item		Leakage Current
Object		_____
		Temperature 25°C Testing Circuitry Figure C

1.Results

[mA]

Model	Standards	Input Volt.				Note
		100 [V]	125 [V]	230 [V]	250 [V]	
EAC-06-681 ESC-06-681	UL1283	0.031	0.040	0.082	0.093	
EAC-06-102 ESC-06-102	UL1283	0.044	0.056	0.110	0.120	
EAC-06-222 ESC-06-222	UL1283	0.090	0.120	0.230	0.250	
EAC-06-332 ESC-06-332	UL1283	0.130	0.170	0.340	0.370	
EAC-06-472 ESC-06-472	UL1283	0.190	0.240	0.480	0.520	

2.Condition

Leakage current value is concluded after measuring both phases of AC input and by choosing the larger one.

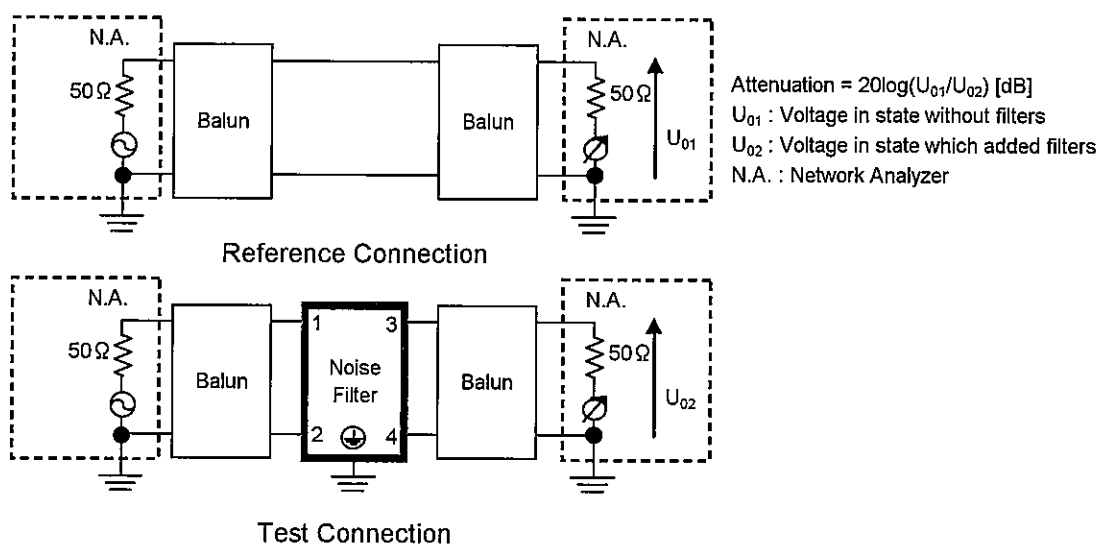


Figure A - 1 Differential mode attenuation measurement

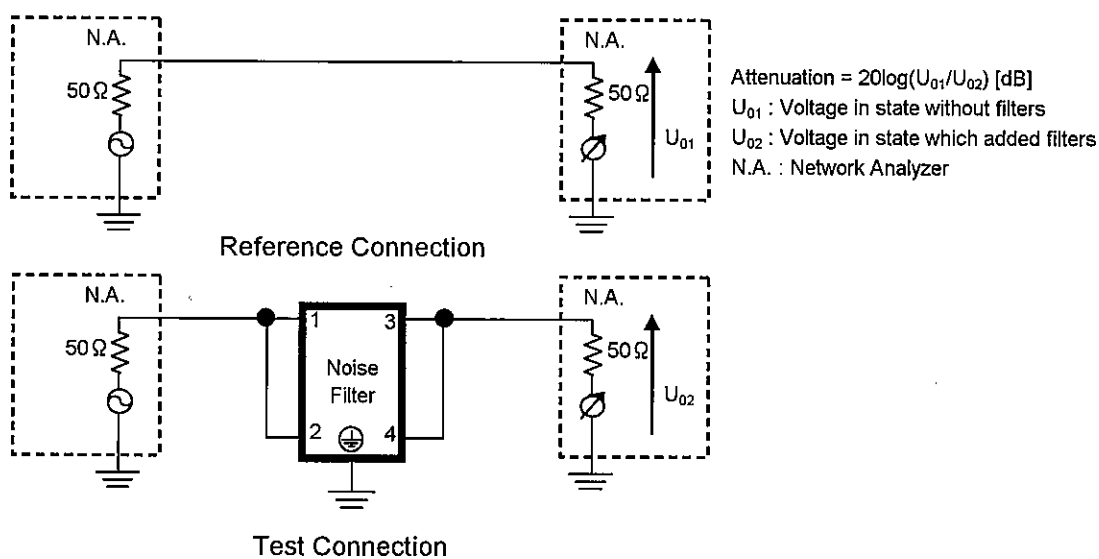
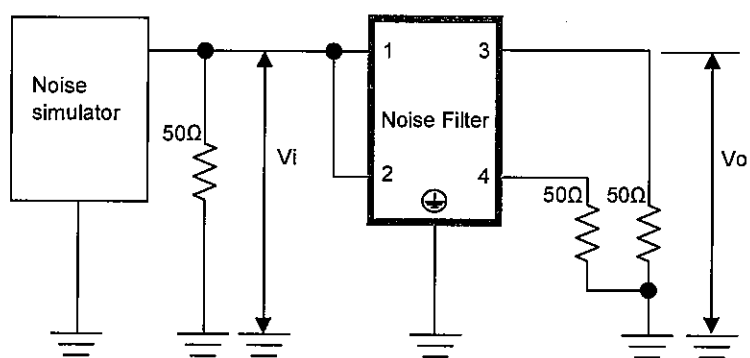


Figure A - 2 Common mode attenuation measurement



Pulse attenuation measurement

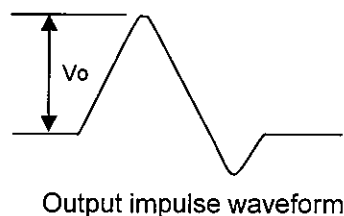
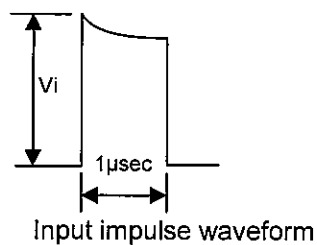


Figure B Pulse attenuation measurement

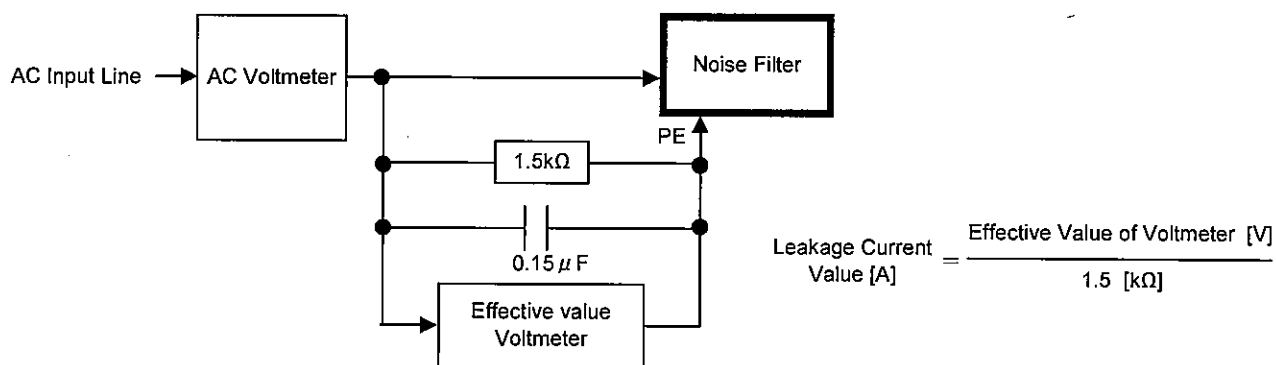


Figure C Leakage current measurement (UL1283)