

TEST DATA OF EAC-30-□□□

Noise Filter

Feb. 26. 2010

Approved by : Toshio Watanabe Design Manager

Prepared by : Tadayuki Noda Design Engineer

COSEL CO.,LTD.

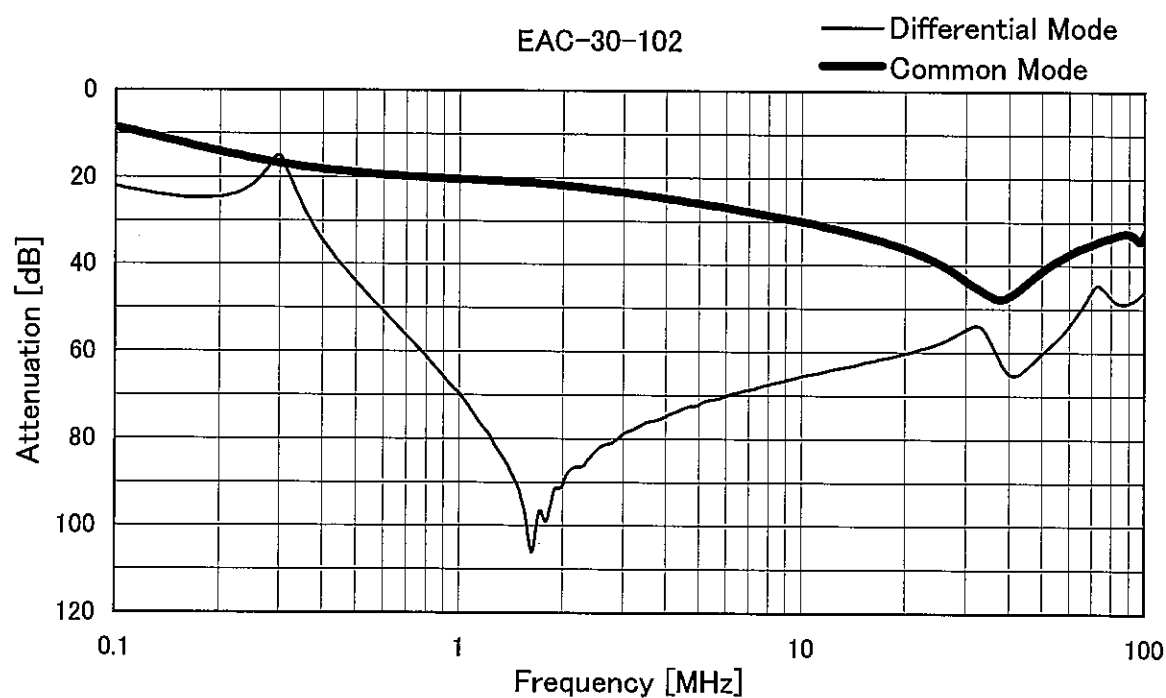
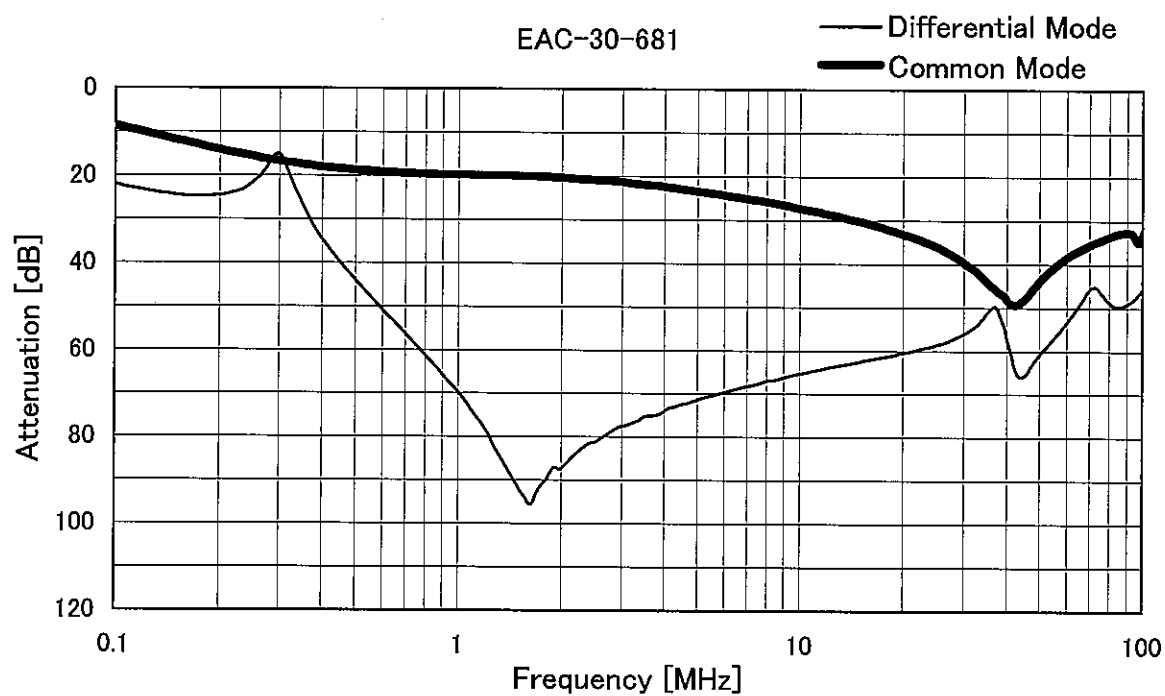
CONTENTS

1. Attenuation Characteristics	1
2. Pulse Attenuation Characteristics	4
3. Leakage Current	6
4. Figure of Testing Circuitry	7

(Final Page 8)

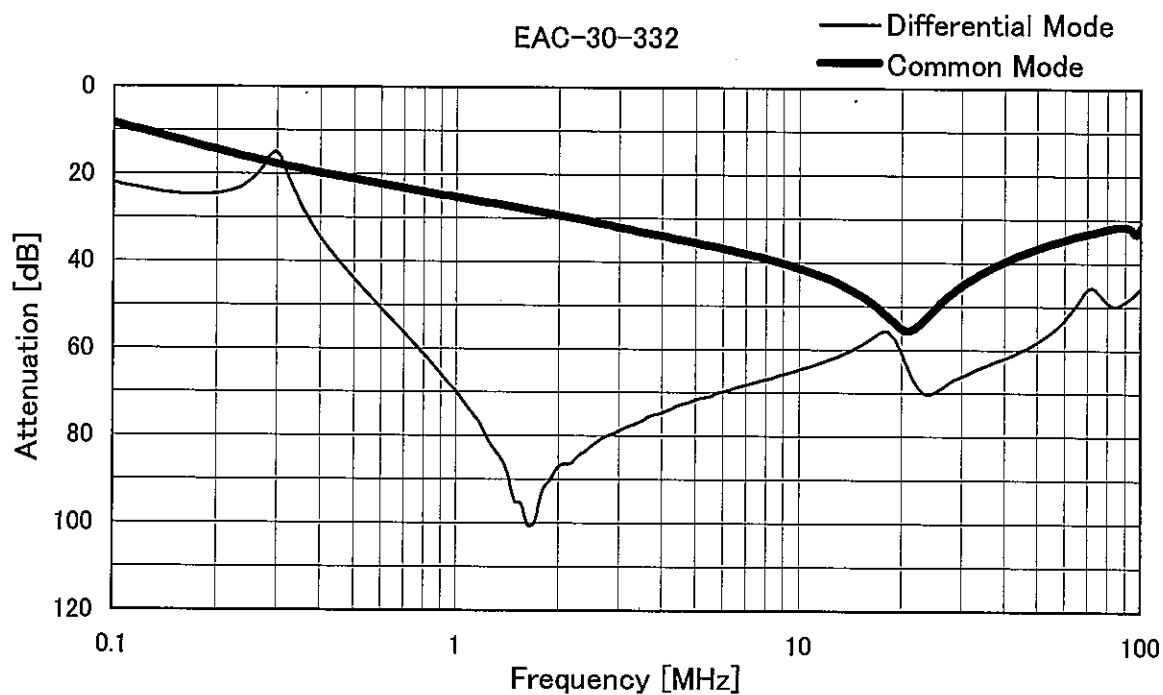
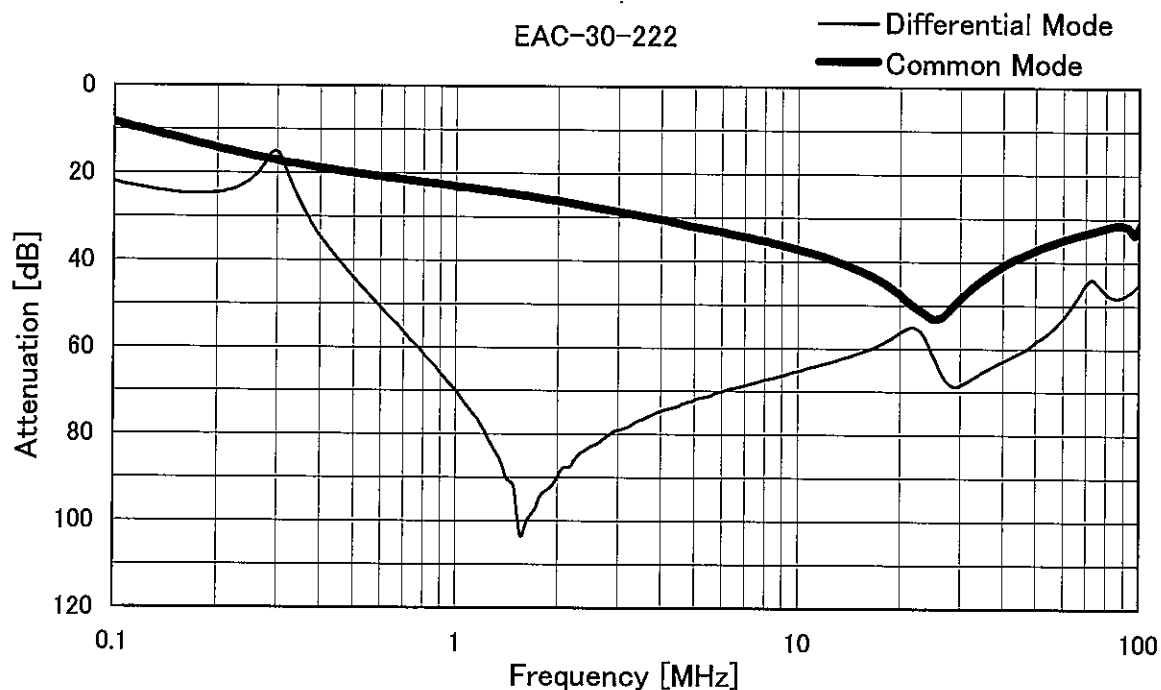
COSEL

Model	EAC-30-□□□	Temperature 25°C Testing Circuitry Figure A
Item	Attenuation Characteristics	
Object	_____	



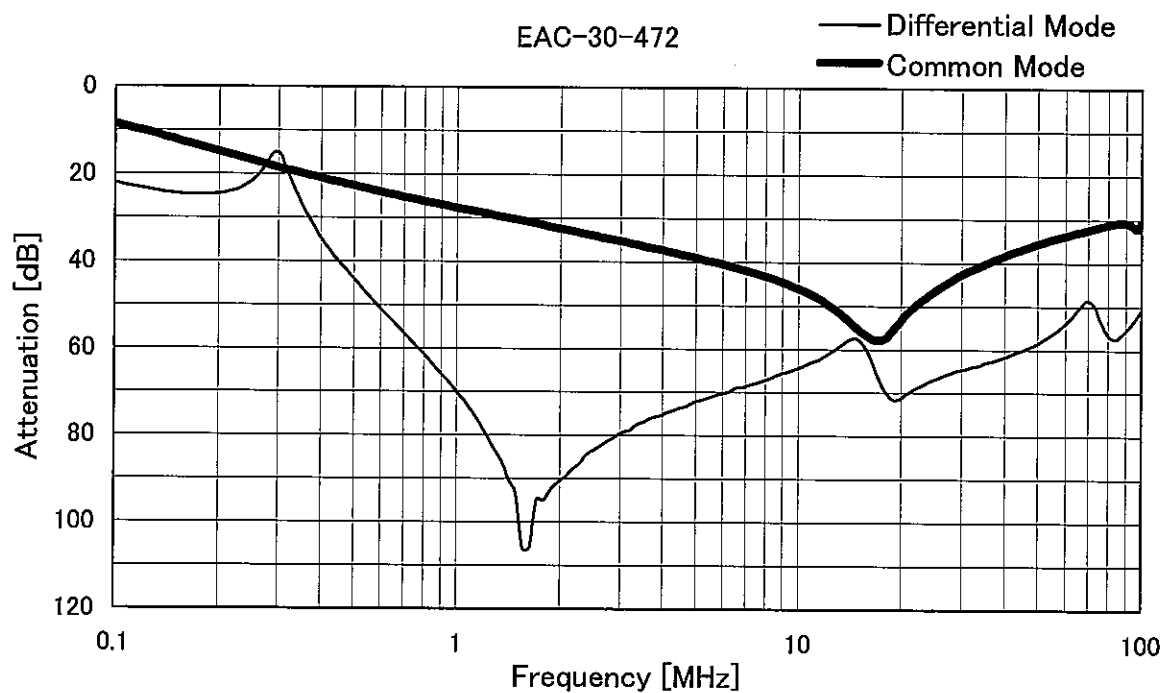
COSEL

Model	EAC-30-□□□	Temperature	25°C
Item	Attenuation Characteristics	Testing Circuitry	Figure A
Object	_____		



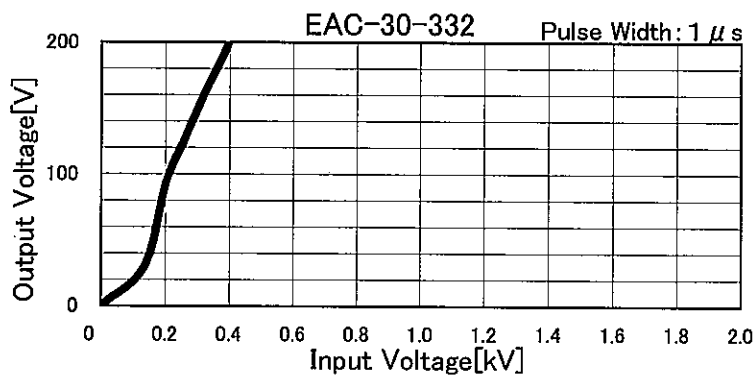
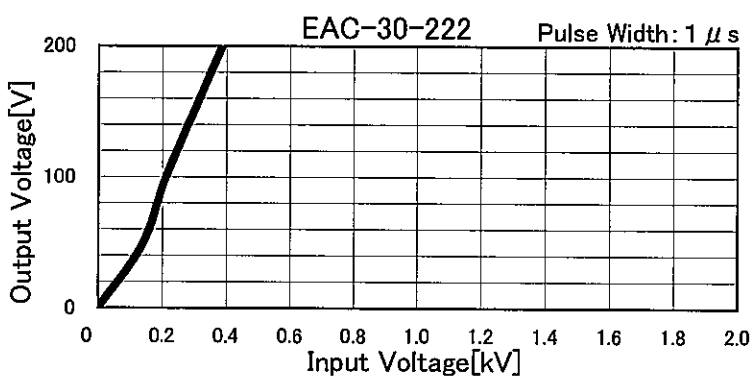
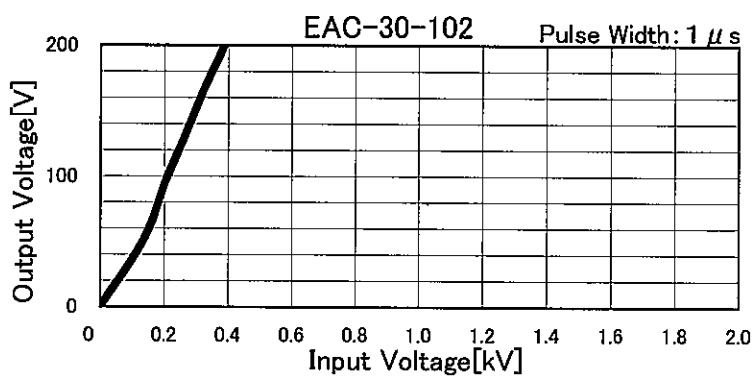
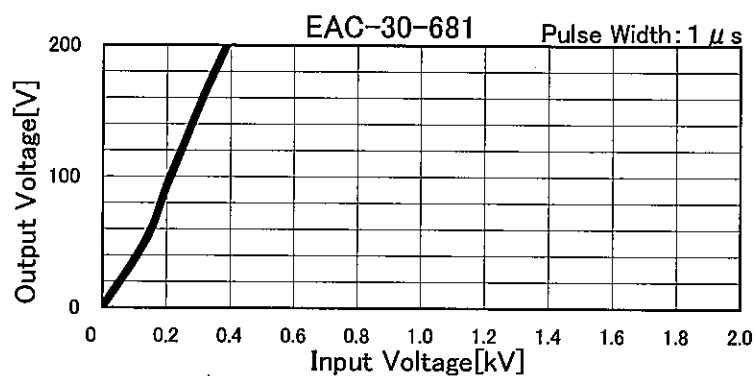
COSEL

Model	EAC-30-□□□	Temperature	25°C
Item	Attenuation Characteristics	Testing Circuitry	Figure A
Object	_____		



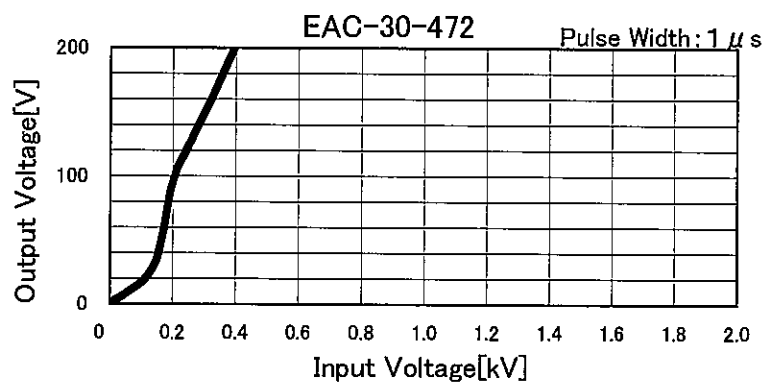
COSEL

Model	EAC-30-□□□	Temperature 25°C Testing Circuitry Figure B
Item	Pulse Attenuation Characteristics	
Object	_____	



COSEL

Model	EAC-30-□□□	Temperature	25°C
Item	Pulse Attenuation Characteristics	Testing Circuitry	Figure B
Object			



COSEL

		Temperature 25°C Testing Circuitry Figure C
Model	EAC-30-□□□	
Item	Leakage Current	
Object	_____	

1.Results

[mA]

Model	Standards	Input Volt.				Note
		100 [V]	125 [V]	230 [V]	250 [V]	
EAC-30-681	UL1283	0.031	0.040	0.082	0.093	
EAC-30-102	UL1283	0.044	0.056	0.110	0.120	
EAC-30-222	UL1283	0.090	0.120	0.230	0.250	
EAC-30-332	UL1283	0.130	0.170	0.340	0.370	
EAC-30-472	UL1283	0.190	0.240	0.480	0.520	

2.Condition

Leakage current value is concluded after measuring both phases of AC input and by choosing the larger one.

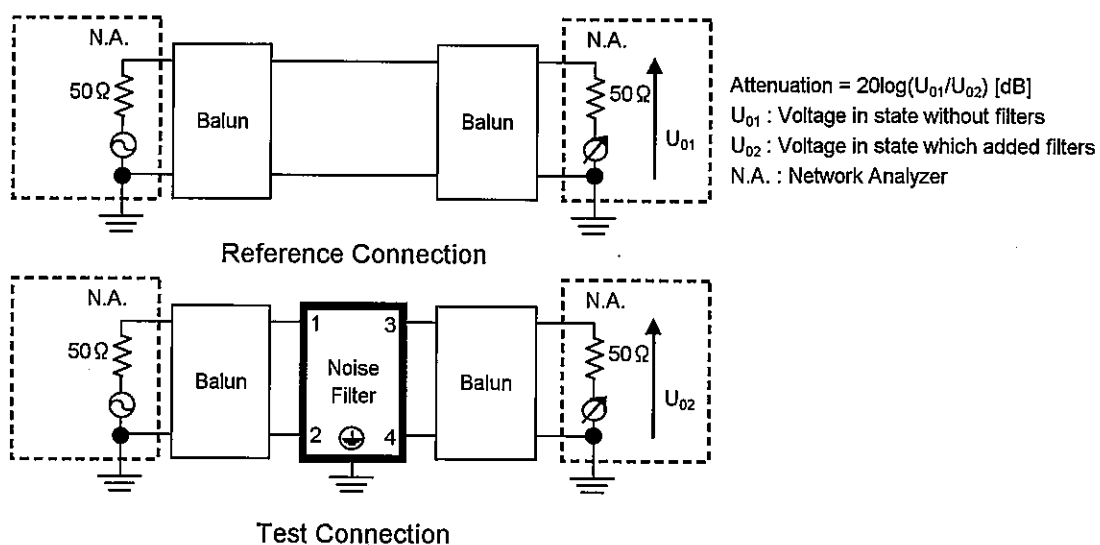


Figure A - 1 Differential mode attenuation measurement

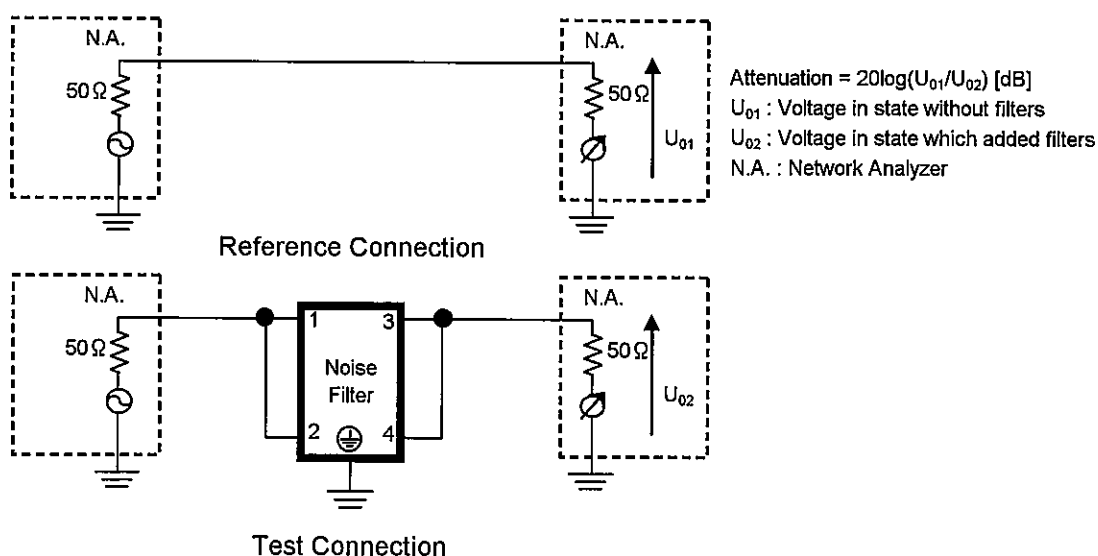
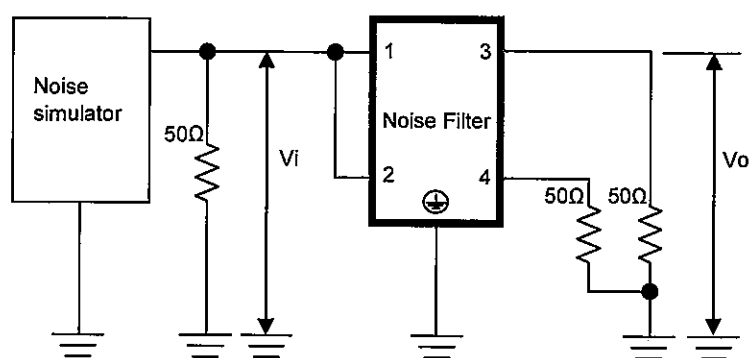


Figure A - 2 Common mode attenuation measurement



Pulse attenuation measurement

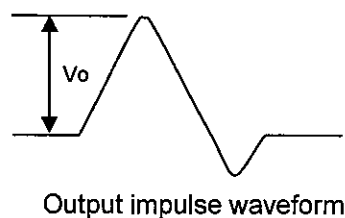
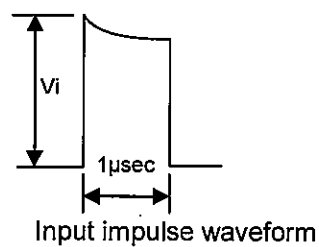


Figure B Pulse attenuation measurement

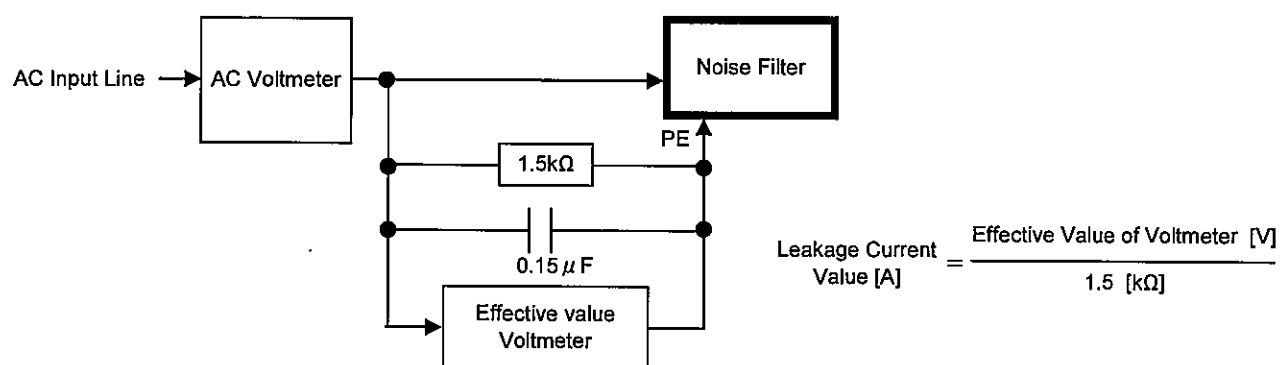


Figure C Leakage current measurement (UL1283)