



# TEST DATA OF FSB-50-□□□

Noise Filter

Nov. 06 , 2017

Approved by : Tadayuki Noda  
Tadayuki Noda Design Manager

Prepared by : Kenji Kamoi  
Kenji Kamoi Design Engineer

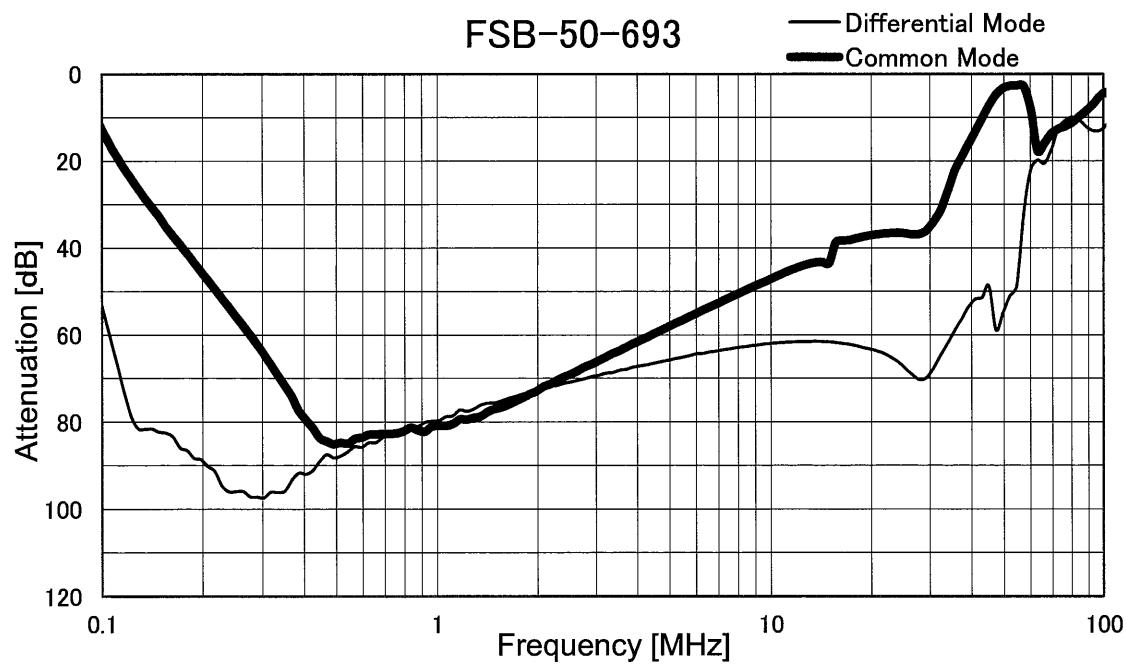
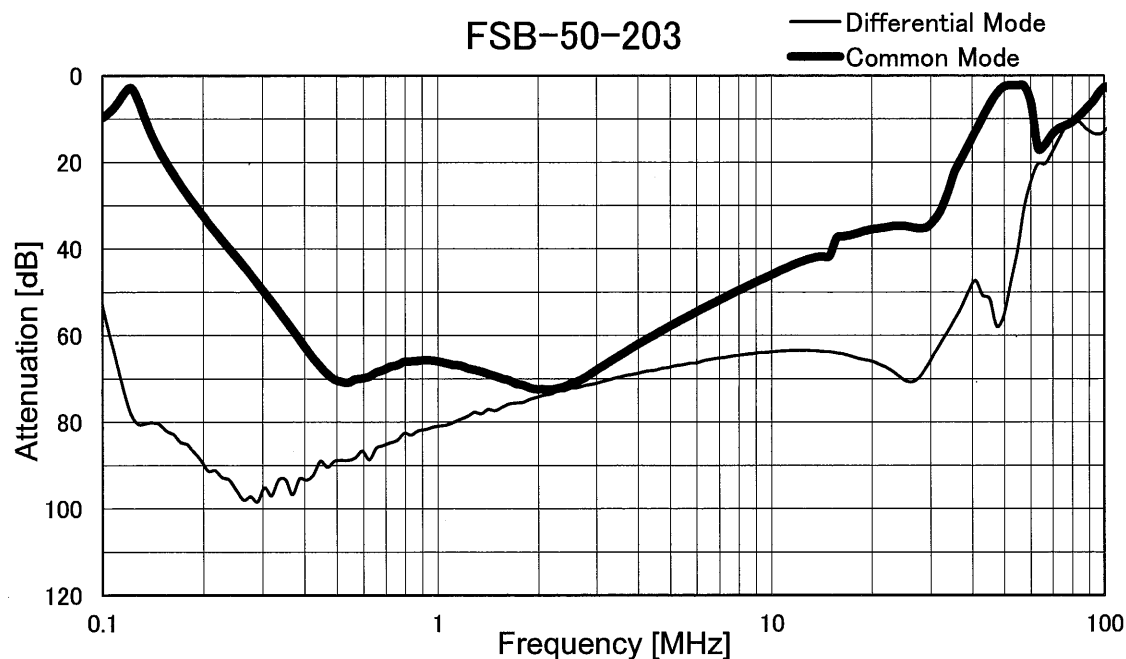
**COSEL CO.,LTD.**

## CONTENTS

1.Attenuation Characteristics .....	1
2.Leakage Current .....	4
3.Figure of Testing Circuitry .....	5
(Final Page 6)	

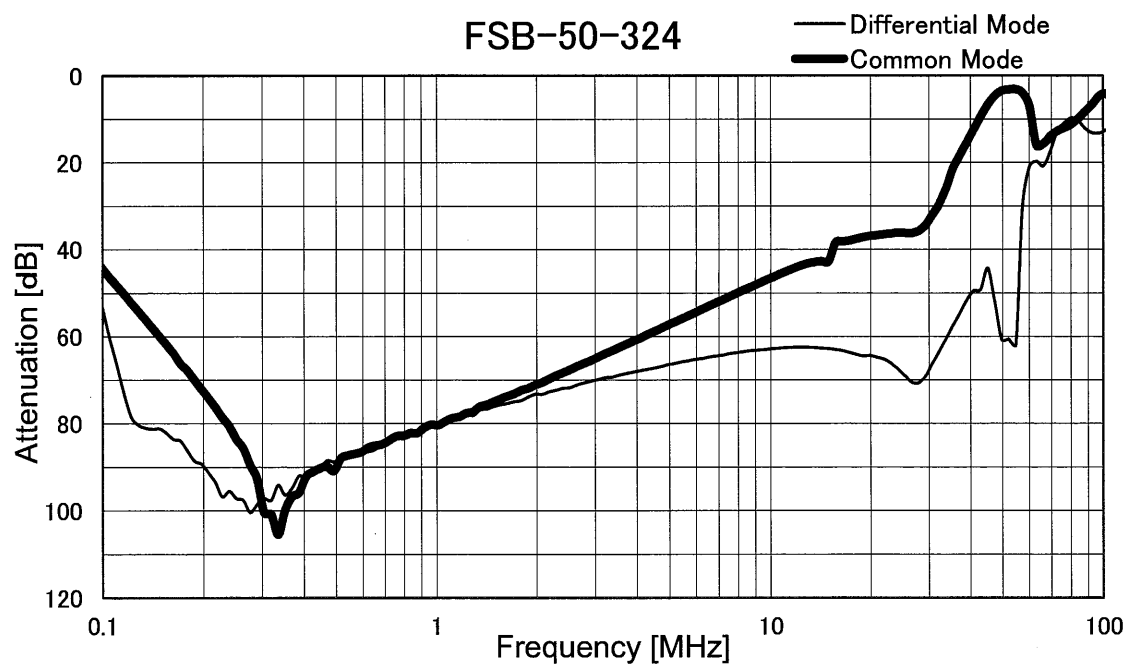
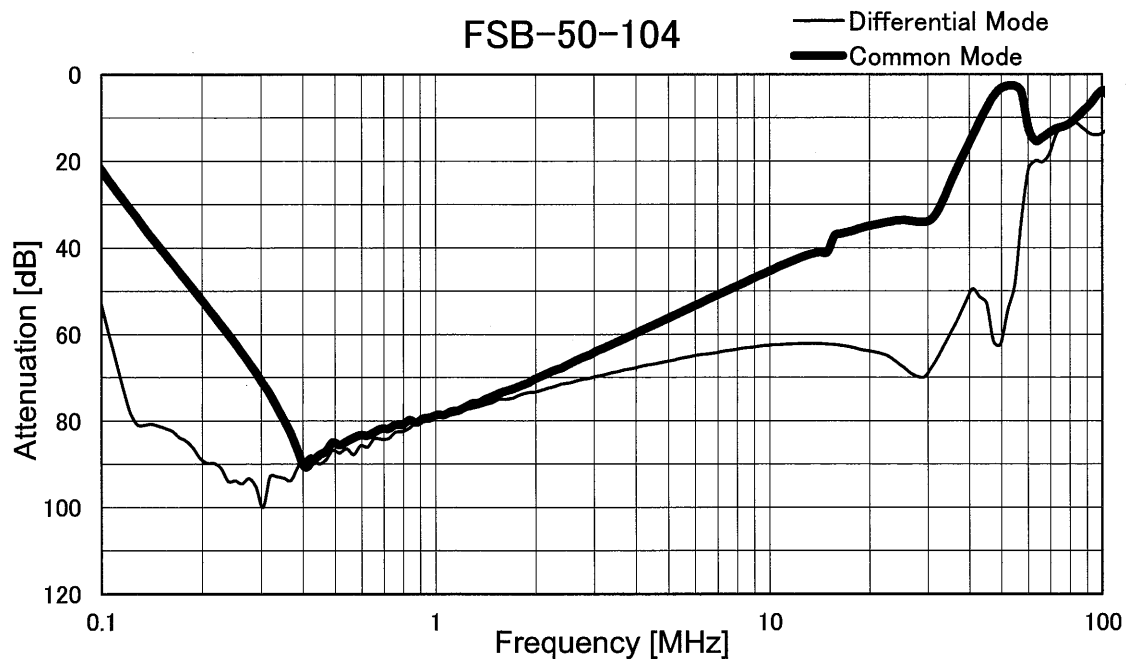
**COSEL**

Model	FSB-50-□□□	Temperature	25°C
Item	Attenuation Characteristics	Testing Circuitry	Figure A
Object	_____		



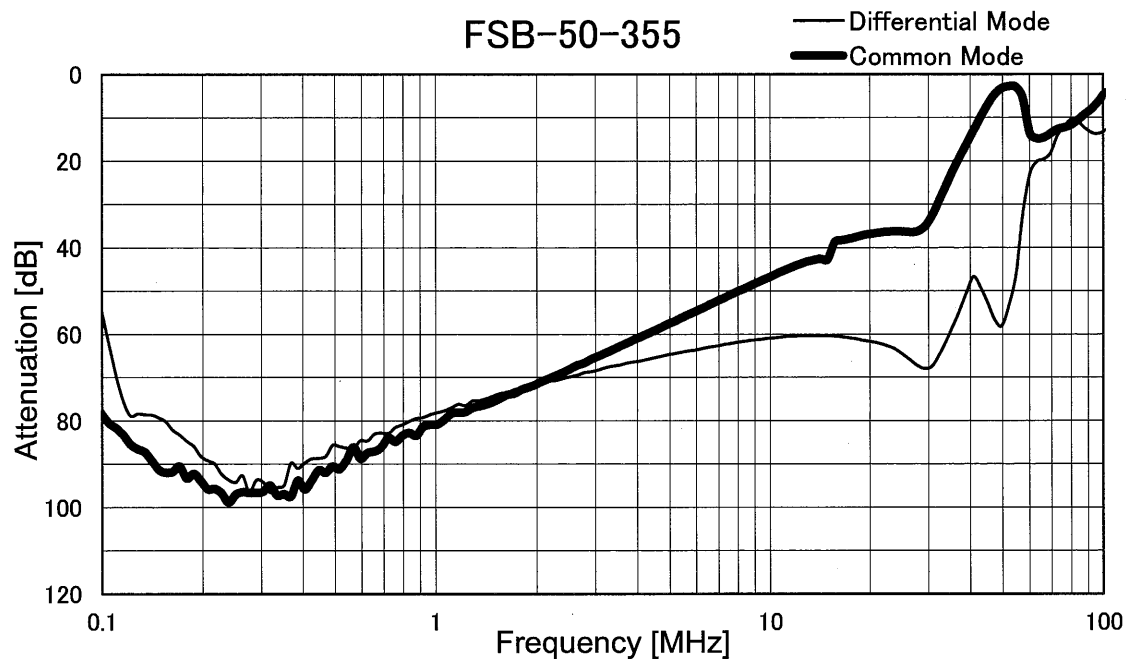
**COSEL**

Model	FSB-50-□□□	Temperature	25°C
Item	Attenuation Characteristics	Testing Circuitry	Figure A
Object	_____		



**COSEL**

		Temperature 25°C Testing Circuitry Figure A
Model	FSB-50-□□□	
Item	Attenuation Characteristics	
Object	_____	





Model		FSB-50-□□□
Item		Leakage Current
Object		_____
		Temperature 25°C Testing Circuitry Figure B

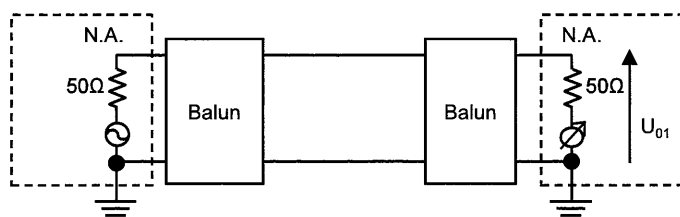
## 1.Results

[mA]

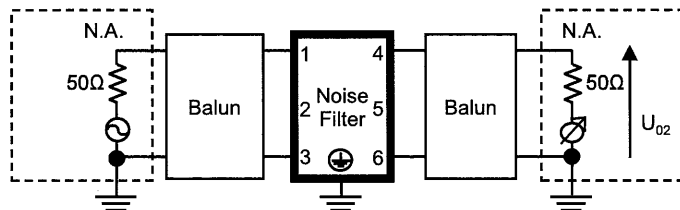
Model	Standards	Voltage system	Input Volt.					Note
			200[V]	250[V]	400[V]	480[V]	500[V]	
FSB-50-203	UL1283	Δ-connection	0.42	0.54	0.85	1.00	1.05	
		Wye-connection	0.003	0.004	0.005	0.005	0.005	
FSB-50-693	UL1283	Δ-connection	1.50	1.80	2.80	3.50	3.75	
		Wye-connection	0.01	0.01	0.02	0.02	0.02	
FSB-50-104	UL1283	Δ-connection	2.10	2.60	4.20	5.00	5.50	
		Wye-connection	0.02	0.02	0.02	0.02	0.02	
FSB-50-324	UL1283	Δ-connection	6.50	8.00	13.0	15.5	16.5	
		Wye-connection	0.07	0.07	0.08	0.09	0.09	
FSB-50-355	UL1283	Δ-connection	60.0	76.0	120			Δ-connection's rated voltage is 400V(440Vmax)
		Wye-connection	0.30	0.36	0.56	0.67	0.70	

## 2.Condition

Leakage current value is concluded after measuring both phases of AC input and by choosing the larger one.



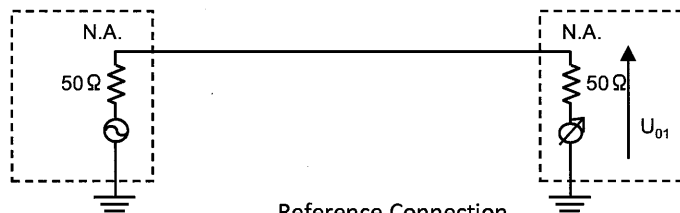
Reference Connection



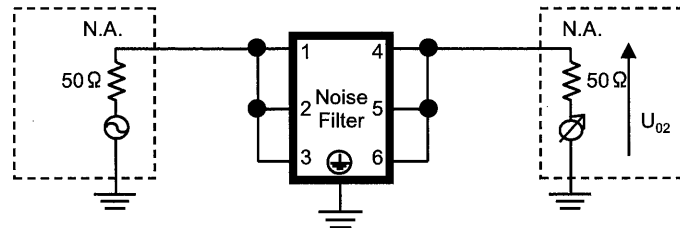
Test Connection

Figure A - 1 Differential mode attenuation measurement

Attenuation =  $20\log(U_{01}/U_{02})$  [dB]  
 $U_{01}$  : Voltage in state without filters  
 $U_{02}$  : Voltage in state which added filters  
 N.A. : Network Analyzer



Reference Connection



Test Connection

Figure A - 2 Common mode attenuation measurement

Attenuation =  $20\log(U_{01}/U_{02})$  [dB]  
 $U_{01}$  : Voltage in state without filters  
 $U_{02}$  : Voltage in state which added filters  
 N.A. : Network Analyzer

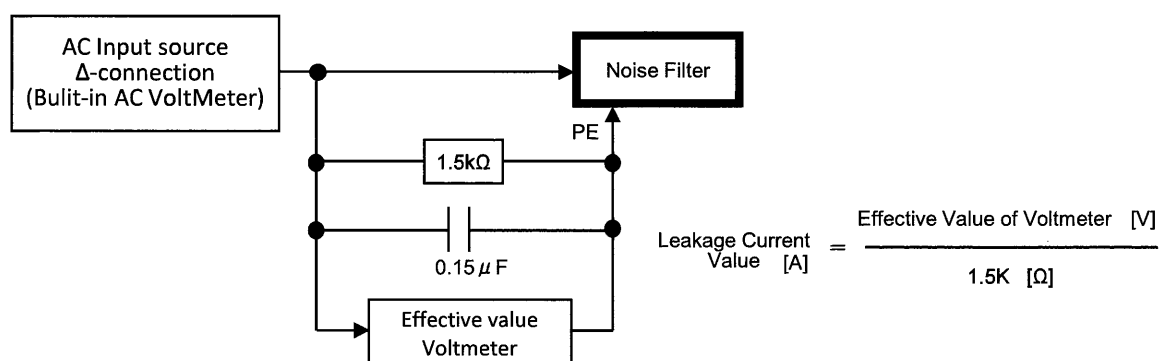


Figure B - 1 Leakage current measurement ( UL1283 Δ-connection)

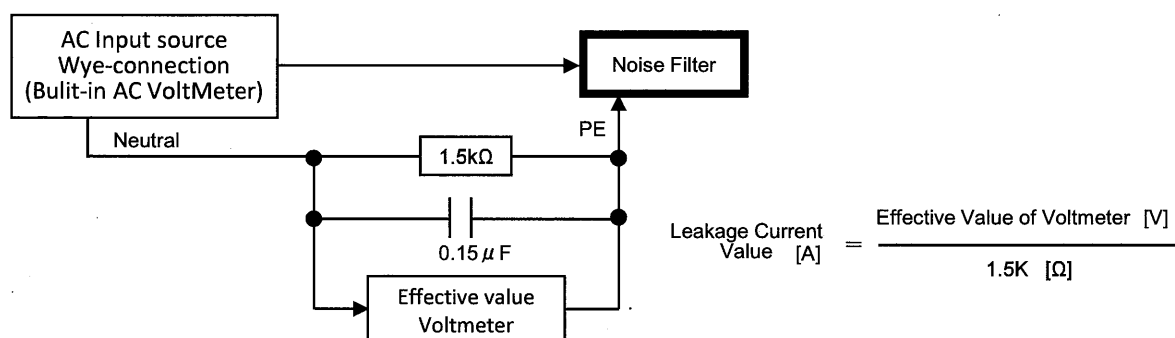


Figure B - 2 Leakage current measurement ( UL1283 Wye-connection)